

Features

- Maximum operating pressure is 35 bar.
- Operating temperature range -20°C to +100°C.
- Material: Brass Nickel-Plated Finish
- Single Shut Off (One side is with valve)
- Euro Profile DN2.7
- Micro Series
- Flow 165 l/min
- Compatible with:
TST 059
PARKER - RECTUS 20, 91
WALTHER 06 - 003
HASCO Z80 - 5

RS PRO Pneumatic Quick Connect Coupling

RS Stock No.: 0325410



RS PRO is the own brand of RS. The RS PRO Seal of Approval is your assurance of professional quality, a guarantee that every part is rigorously tested, inspected, and audited against demanding standards. Making RS PRO the Smart Choice for our customers.

Product Description

RS PRO Series 20 Quick Connect Couplings

Pneumatic quick-connect coupling connectors are found across industry in pneumatic systems as diverse as robotic assembly lines and other equipment.

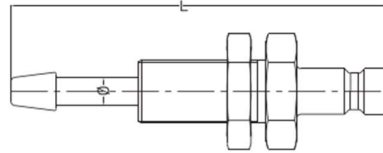
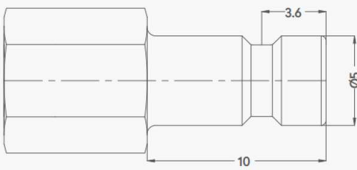
- Maximum operating pressure is 35 bar.
- Operating temperature range -20°C to +100°C.
- Material: Brass Nickel-Plated Finish
- Single Shut Off (One side is with valve)
- Euro Profile DN2.7
- Micro Series
- Flow 165 l/min
- Compatible with:
 - TST 059
 - PARKER - RECTUS 20, 91
 - WALTHER 06 - 003
 - HASCO Z80 - 5

Specifications

Manufacturer Series	020
Coupling Type	Quick Connect Coupling Plug
Connection Standard	DN 2.7 Euro Profile Micro Series
Connection Standard Compatible With	TST 059, PARKER-RECTUS 20 & 91, WALTHER 06 - 003; HASCO Z80 - 5
Minimum Operating Temperature	-20°C
Maximum Operating Temperature	+100°C
Maximum Operating Pressure	35bar
Flow	165 l/min
Flow Direction & Sealing	Through Type Coupling
Material	Brass
Finish	Nickel Plated
Connection Type	Hose Barb
Thread Size	M10
Thread Standard	Metric
Thread Gender	N/A
Coupling Gender	Male
Threaded Connection	Metric M10
Seal material	N/A
Hose Barb Connection	6 mm

Specifications

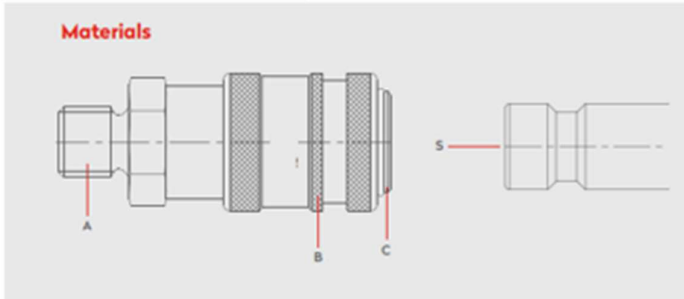
Plug Profile Serie 020



Dimensions (mm)

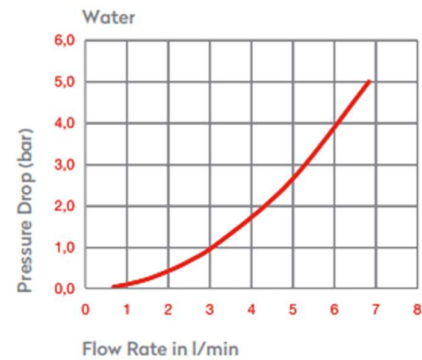
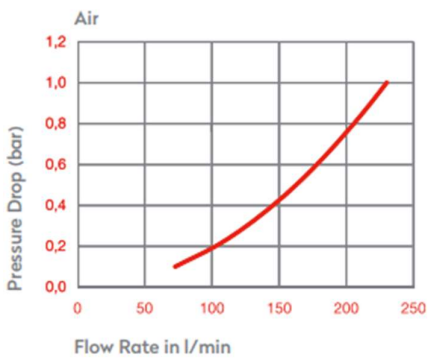
SW	L	ØD
11	44	-

Materials



Material Code

A = Brass Nickel Plated
B = Brass Nickel Plated
C = Brass Nickel Plated
S = Brass Nickel Plated



Series 20 Quick Connect Couplings



0 - 35 bar
(0-508 PSI)



-20° to +100°C (NBR)
-4° to +212°F

Shut Off
Type



OM 100 - 00300
OM 100 - 00500

FLOW

165 lt/min

DN

2.7 mm