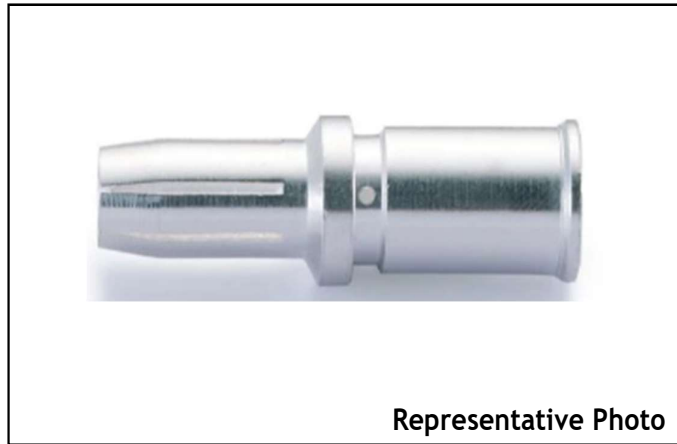


## Features

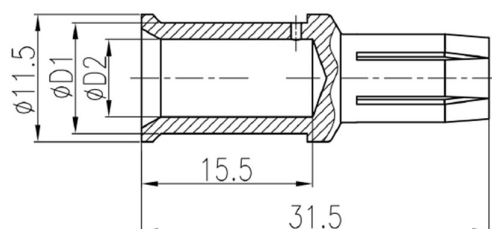
- RS PRO 70 A female crimp contact.

## RS PRO Industrial Power Connectors

RS Stock No.: 0630938, 0630945



RS Professionally Approved Products bring to you professional quality parts across all product categories. Our product range has been tested by engineers and provides a comparable quality to the leading brands without paying a premium price.



Part Code	Wire Gauge		D2	D1	Stripping length	Weight (g)
	mm <sup>2</sup>	AWG				
0630938	10	8	4.3	5.6	15.5	8
0630945	16	6	5.5	8.5	15.5	8.8

## Technical Specification

Material	Copper alloy
Surface	Hard-silver plated
Rated current	70A
Contact resistance	□ 0.5mΩ
Wire gauge	6-16 mm <sup>2</sup>
Mating cycles	□ 500
For stranded fine wire acc. to	IEC 60228-5