

FIG 1
SIB-110-02-XX-S-LC SHOWN

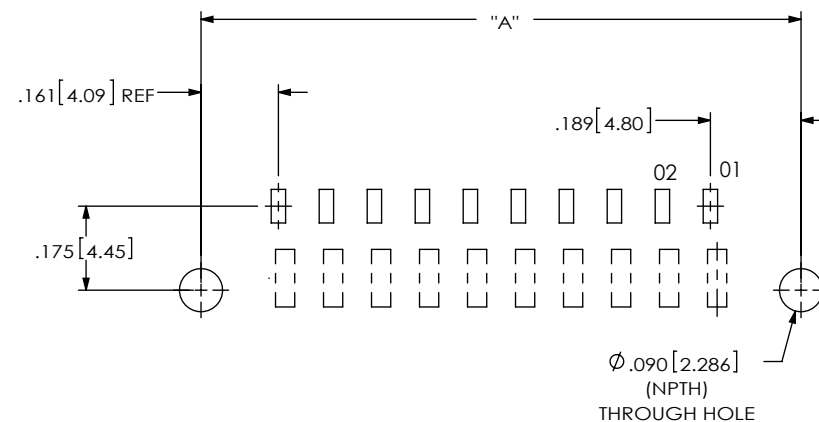


FIG 2
-E & -M OPTIONS FOR POSITIONS -05, -10, -15
(DIFFERENT AS SHOWN, OTHERWISE SAME AS FIG 1)

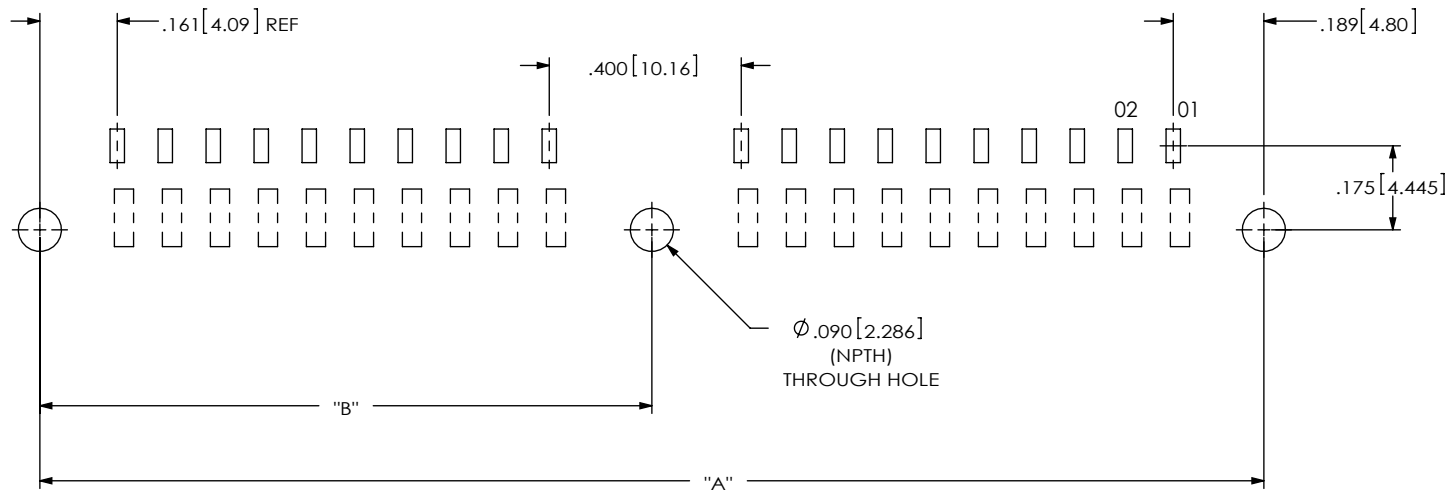


FIG 3
-E & -M OPTIONS FOR POSITIONS -20, -25
(DIFFERENT AS SHOWN, OTHERWISE SAME AS FIG 1)

TABLE 1: THREADED INSERT OPTION		
POS	"A"	"B"
-05	.750[19.05]	N/A
-10	1.250[31.75]	N/A
-15	1.750[44.45]	N/A
-20	2.550[64.77]	1.275[32.39]
-25	3.050[77.47]	1.475[37.47]

ALL DIMENSIONS ARE SYMMETRIC ABOUT THE CENTERLINE.

PROPRIETARY NOTE

THIS DOCUMENT CONTAINS INFORMATION
CONFIDENTIAL AND PROPRIETARY TO
SAMTEC, INC. AND SHALL NOT BE REPRODUCED
OR TRANSFERRED TO OTHER DOCUMENTS OR
DISCLOSED TO OTHERS OR USED FOR ANY
PURPOSE OTHER THAN THAT WHICH IT WAS
OBTAINED WITHOUT THE EXPRESSED WRITTEN
CONSENT OF SAMTEC, INC.

samtec

520 PARK EAST BLVD, NEW ALBANY, IN 47150
PHONE: 812-944-6733 FAX: 812-948-5047
e-Mail: info@SAMTEC.com code 55322

NOTE:
STENCIL TO BE .0060[.152] THICK.

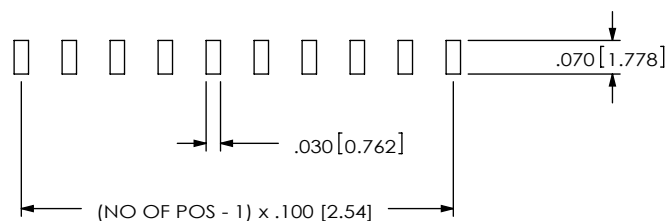


FIG 4
SIB-110-02-XX-S-XX-XX SHOWN
ALL DIMENSIONS ARE SYMMETRIC ABOUT THE CENTERLINE.

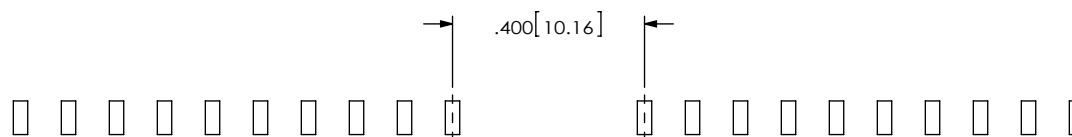


FIG 5
-E & -M OPTIONS FOR POSITIONS -20, -25
(DIFFERENT AS SHOWN, OTHERWISE SAME AS FIG 4)

PROPRIETARY NOTE

THIS DOCUMENT CONTAINS INFORMATION
CONFIDENTIAL AND PROPRIETARY TO
SAMTEC, INC. AND SHALL NOT BE REPRODUCED
OR TRANSFERRED TO OTHER DOCUMENTS OR
DISCLOSED TO OTHERS OR USED FOR ANY
PURPOSE OTHER THAN THAT WHICH IT WAS
OBTAINED WITHOUT THE EXPRESSED WRITTEN
CONSENT OF SAMTEC, INC.

samtec

520 PARK EAST BLVD, NEW ALBANY, IN 47150
PHONE: 812-944-6733 FAX: 812-948-5047
e-Mail info@SAMTEC.com code 55322

NOTE:

1. PLATING TO BE .000030 INCHES GOLD WITH HARDNESS OF 130-200 KNOOP PER ASTM B488 TYPE 2, GRADE C.
2. ALL DIMENSIONS ARE SYMMETRIC ABOUT THE CENTERLINE.

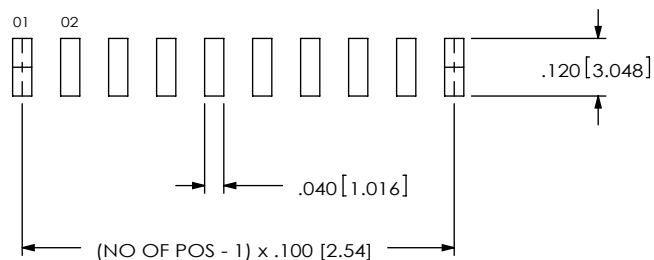


FIG 6
LOCKING CLIP & NON-LOCKING CLIP

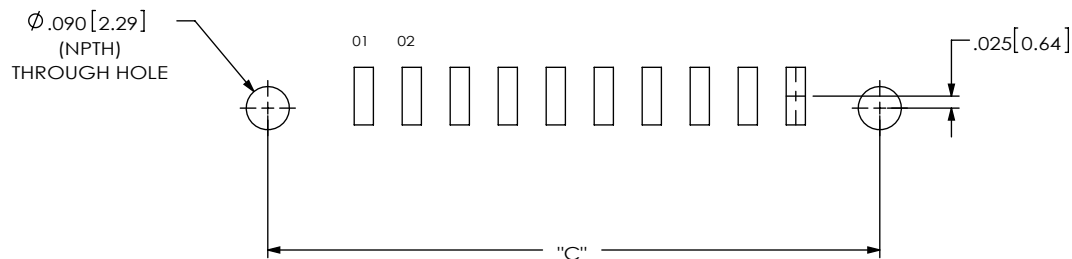


FIG 7
-E & -M OPTIONS FOR POSITIONS -05, -10, -15
(DIFFERENT AS SHOWN, OTHERWISE SAME AS FIG 6)

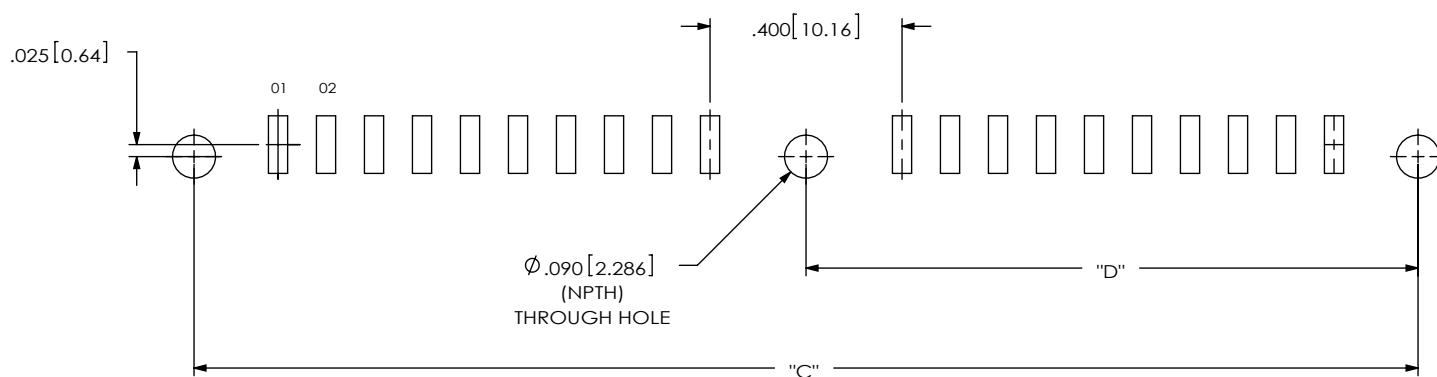


FIG 8
-E & -M OPTIONS FOR POSITIONS -20, -25
(DIFFERENT AS SHOWN, OTHERWISE SAME AS FIG 6)

TABLE 2: THREADED INSERT OPTION		
POS	"C"	"D"
-05	.750[19.05]	N/A
-10	1.250[31.75]	N/A
-15	1.750[44.45]	N/A
-20	2.550[64.77]	1.275[32.39]
-25	3.050[77.47]	1.475[37.47]

PROPRIETARY NOTE

THIS DOCUMENT CONTAINS INFORMATION
CONFIDENTIAL AND PROPRIETARY TO
SAMTEC, INC. AND SHALL NOT BE REPRODUCED
OR TRANSFERRED TO OTHER DOCUMENTS OR
DISCLOSED TO OTHERS OR USED FOR ANY
PURPOSE OTHER THAN THAT WHICH IT WAS
OBTAINED WITHOUT THE EXPRESSED WRITTEN
CONSENT OF SAMTEC, INC.

samtec

520 PARK EAST BLVD, NEW ALBANY, IN 47150
PHONE: 812-944-6733 FAX: 812-948-5047
e-Mail info@SAMTEC.com code 55322