

LOCK SWITCH

WRL IP66/IP67 SEALED LOCK SWITCH

ELECTRICAL & MECHANICAL SPECIFICATION

Switch Rating:	1A @24V dc	Life:	>10,000 Cycles
Proof Voltage:	750 Vac (Initial)	Lock Type:	5 Disc
Insulation Resistance:	>999MΩ @ 500Vdc (Initial)	Operating Temperature:	-20°C to +65°C
Contact Resistance:	<20mΩ (Initial)	Lock Housing:	Zinc Alloy Bright Cr Plated
Contact Material:	Brass CZ108, Ag Plated	Moulding Material:	Polyamide 6.6 G.F. V0 Rated
Moulding Colour:	Single pole – Grey, Double pole - Green		

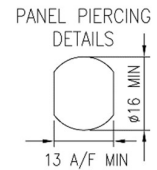
FEATURES

Suitable for Marine Environment Exposure to Severity One (EN60068-2-52) salt mist tested

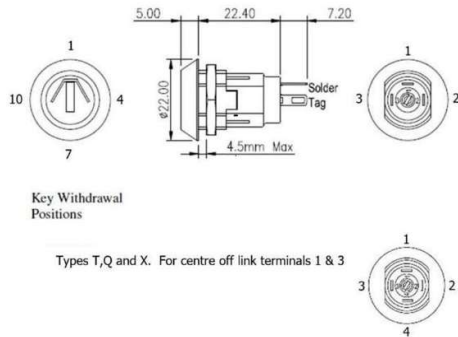
Front assembly
Single or Double pole
Max panel thickness 3.5mm
Rear panel depth - <30mm
Made in UK

2 keys per switch
Up to 200 differ key combinations available
Keys are double entry (can be inserted into lock either way up)

Oil regularly if used outside



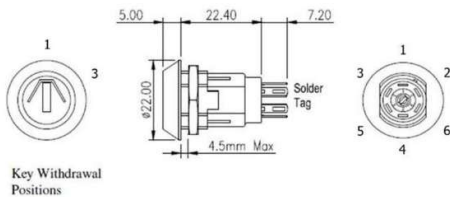
SINGLE POLE LOCK SWITCH



TAPERED LOCK HEAD 90° INDEXING

BASIC PART No.	TOTAL MOVEMENT	INDEXING	KEY WITHDRAWAL POSITIONS	SWITCH CONFIGURATION
WRL-5-D	90° 1-4	90°	1,4	
WRL-5-E	90° 1-4	90°	1 ONLY	
WRL-5-F	180° 1-7	90°	1,4,7	
WRL-5-V	180° 1-7	90°	1,4	
WRL-5-W	180° 1-7	90°	1 ONLY	
WRL-5-P	180° 1-7	90°	1,4,7	
WRL-5-T	180° 1-7	90°	1,4,7	
WRL-5-Q	180° 1-7	90°	4 ONLY	
WRL-5-X	180° 10-4	90°	1 ONLY	

DOUBLE POLE LOCK SWITCH



TAPERED LOCK HEAD 60° INDEXING

BASIC PART No.	TOTAL MOVEMENT	INDEXING	KEY WITHDRAWAL POSITIONS	SWITCH CONFIGURATION
WRL-5-L	60°	60°	1,3	
WRL-5-M	60°	60°	1 ONLY	

WRL ORDERING CODE

