

TAPING SPECIFICATIONS (Applicable standard JIS C 0806-3)

SURFACE MOUNT TYPE (TAPING)



◆CARRIER TAPE [mm]

Fig.1

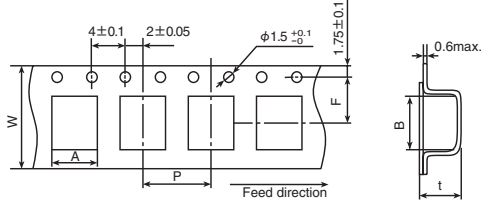


Fig.3

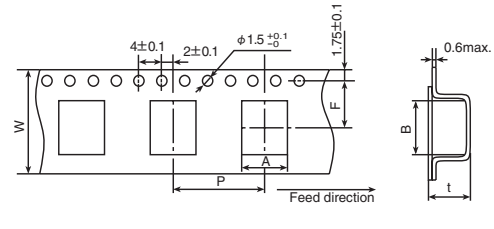


Fig.2

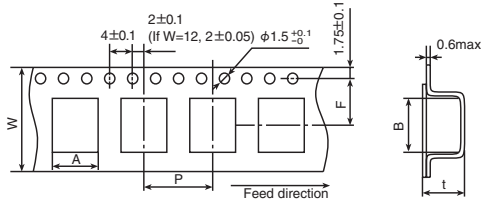
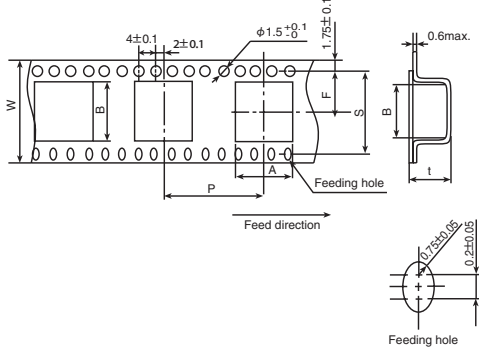


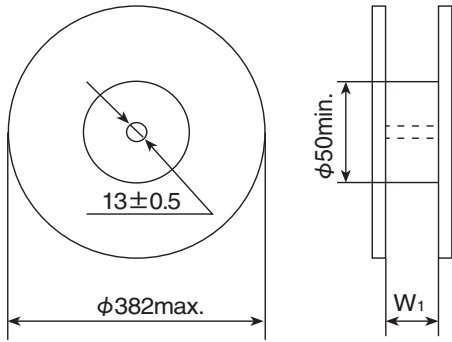
Fig.4



[mm]

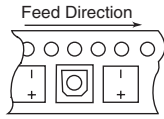
Series	Items	W	A	B	F	P	t	S	Fig.
		±0.3	±0.2	±0.2	±0.1	±0.1	±0.2	±0.1	
Alchip™ MVA/MVE MZR/MZJ MZA/MVY MZF/MZE MZK/MLA MLF/MLE MLK/MVL MVJ/MVH MHL/MHB MHJ/MHK MKB MV-BP MVK-BP	D55	12.0	4.7	4.7	5.5	8.0	5.7	—	1
	D60,D61	12.0	4.7	4.7	5.5	8.0	6.3	—	1
	D73	12.0	4.6	4.6	5.5	8.0	7.5	—	1
	E40	12.0	5.7	5.7	5.5	12.0	4.4	—	2
	E46	12.0	5.7	5.7	5.5	12.0	4.9	—	2
	E55	12.0	5.7	5.7	5.5	12.0	5.7	—	2
	E60,E61	12.0	5.7	5.7	5.5	12.0	6.3	—	2
	E73	16.0	5.7	5.7	7.5	12.0	7.5	—	2
	F45,F46	16.0	7.0	7.0	7.5	12.0	4.9	—	2
	F55	16.0	7.0	7.0	7.5	12.0	5.7	—	2
	F60,F61	16.0	7.0	7.0	7.5	12.0	6.3	—	2
	F73	16.0	7.0	7.0	7.5	12.0	7.5	—	2
	F80	16.0	7.0	7.0	7.5	12.0	8.2	—	2
	F90	16.0	7.0	7.0	7.5	12.0	9.2	—	2
	H63	16.0	8.7	8.7	7.5	12.0	6.8	—	2
	H70	24.0	8.7	8.7	11.5	12.0	7.3	—	2
NPCAP™ PXJ/PXG PXK/PXS PXF/PXE PXA/PXD PXH	H80	24.0	8.7	8.7	11.5	12.0	8.3	—	2
	HA0	24.0	8.7	8.7	11.5	16.0	11.0	—	3
	HC0	24.0	8.7	8.7	11.5	16.0	12.7	—	3
	J80	24.0	10.7	10.7	11.5	16.0	8.3	—	3
	JA0	24.0	10.7	10.7	11.5	16.0	11.0	—	3
	JC0	24.0	10.7	10.7	11.5	16.0	12.8	—	3
Hybrid HXA/HXB	KE0	32.0	13.4	13.4	14.2	24.0	14.0	28.4	4
	KG5	32.0	13.4	13.4	14.2	24.0	16.5	28.4	4
	LH0	44.0	17.5	17.5	20.2	28.0	16.8	40.4	4
	LN0	44.0	17.5	17.5	20.2	28.0	22.1	40.4	4
	MH0	44.0	19.5	19.5	20.2	32.0	17.1	40.4	4
MN0	44.0	19.5	19.5	20.2	32.0	22.1	40.4	4	

◆ REEL DIMENSIONS [mm]



◆ POLARITY

- Alchip™ -MVA/MVE/MZR
MZJ/MZA/MVY
MZJ/MZA/MVY
MZJ/MZA/MVY
MLA/MLF/MLE
MLK/MVL/MVJ
MVH/MHL/MHB
MHJ/MHK/MKB
MV-BP/MVK-BP
- NP CAP™ -PXJ/PXG/PXK
PXS/PXF/PXE
PXA/PXD/PXH
- Hybrid -HXA/HXB



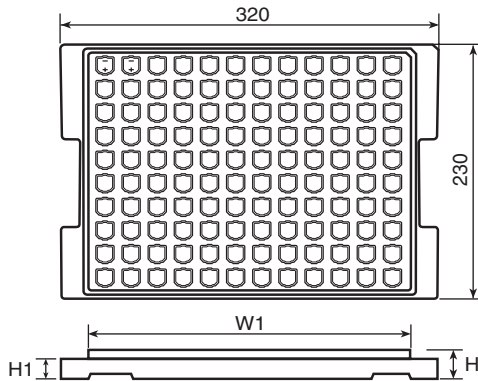
◆ QUANTITY PER REEL/BOX

Series	Size code	Quantity (pcs/reel)	Quantity (pcs/box)	W ₁ (mm)
Alchip™	D55,D60,D61	2,000	10,000	14
	D73	1,500	7,500	14
	MVA/MVE	1,000	5,000	14
	MZR/MZJ	1,000	5,000	18
	MZA/MVY	1,000	5,000	18
	MZF/MZE	900	4,500	18
	MZK/MLA	800	4,000	18
	MLF/MLE	1,000	5,000	18
	MLK/MVL	500	1,500	26
	MVJ/MVH	500	1,500	26
	MHL/MHB	250*1	750*1	34
	MHJ/MHK	200*1	600*1	34
	MKB/MV-BP	175*1	350*1	46
	MVK-BP	125*1	250*1	46
Hybrid	LH0	150*1	300*1	46
	LN0	100*1	200*1	46
	MH0	150*1	300*1	46
	MNO	100*1	200*1	46
NPCAP™	D55	2,000	20,000	14
	E40,E46,E60,E61	1,000	10,000	14
	F45,F46,F55,F60,F61	1,000	7,000	18
	F80	900	6,300	18
	H70	1,000	6,000	26
	H80	900	5,400	26
	HA0	500	3,000	26
	HC0	400	1,200	26
	J80	500	3,000	26
	JA0	500	3,000	26
	JC0	400	1,200	26

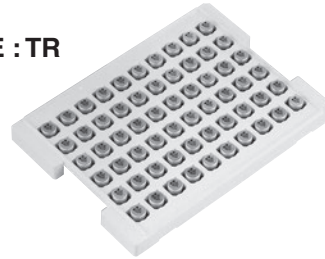
*1 : Changed the packing quantity. (Size Code : KE0 to MNO)

SURFACE MOUNT TYPE (TRAY)

◆ DIMENSIONS [mm]



● TRAY CODE : TR

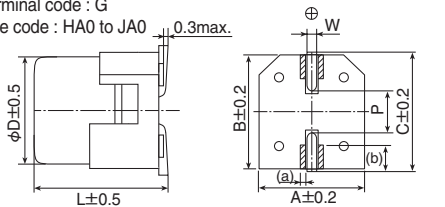


Size code	H [mm]	W ₁ [mm]	H ₁ [mm]	Quantity [pcs/tray]	Quantity [pcs/box]
KE0 & KG5	21.0	284	18.5	120	600
LH0 & LN0	28.0	284	24.0	80	400
MH0 & MNO	28.0	284	24.0	60	300

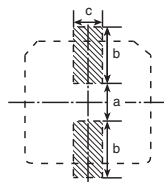
VIBRATION RESISTANT STRUCTURE (Terminal code : G)

◆ DIMENSIONS [mm]

- Terminal code : G
- Size code : HA0 to JA0

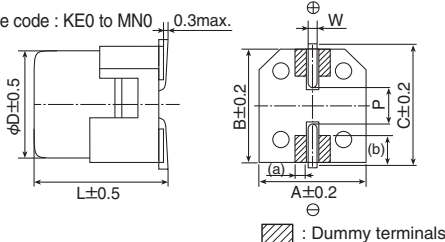


◆ RECOMMENDED SOLDER LAND



▨ Solder land on PC board

- Size code : KE0 to MNO



Size code	Dimensions of products (mm)									Solder land (mm)		
	D	L	A	B	C	W	P	(a)	(b)	a	b	c
HA0	8.0	10.0	8.3	8.3	9.0	0.7 to 1.1	3.1	(0.5)	(1.8)	3.1	4.2	3.5
JA0	10.0	10.0	10.3	10.3	11.0	0.7 to 1.1	4.5	(0.5)	(2.1)	4.5	4.4	3.5
KE0	12.5	13.5	13.0	13.0	13.7	1.0 to 1.3	4.2	(1.3)	(3.0)	3.4	6.3	9.3
KG5	12.5	16.0	13.0	13.0	13.7	1.0 to 1.3	4.2	(1.3)	(3.0)	3.4	6.3	9.3
LH0	16.0	16.5	17.0	17.0	18.0	1.0 to 1.3	6.5	(2.0)	(3.0)	4.7	7.8	9.6
LN0	16.0	21.5	17.0	17.0	18.0	1.0 to 1.3	6.5	(2.0)	(3.0)	4.7	7.8	9.6
MH0	18.0	16.5	19.0	19.0	20.0	1.0 to 1.3	6.5	(2.0)	(4.0)	4.7	8.8	9.6
MNO	18.0	21.5	19.0	19.0	20.0	1.0 to 1.3	6.5	(2.0)	(4.0)	4.7	8.8	9.6

() : Ref.

RADIAL LEAD TYPE TAPING SPECIFICATIONS (Applicable standard JIS C 0806-2)

Conductive Polymer Aluminum Solid Capacitors

◆DIMENSION [mm]

Fig.1

Taping Code : TX
φD=φ5

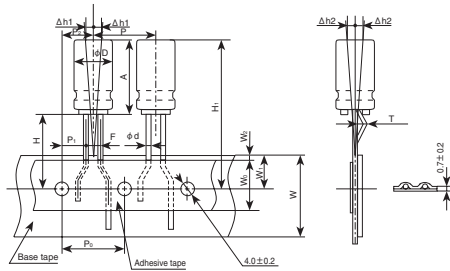
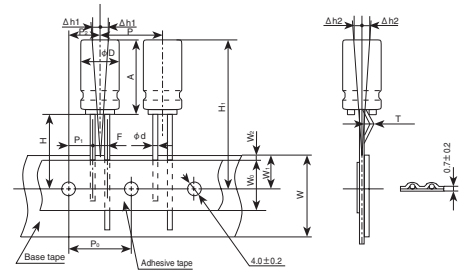


Fig.2

Taping Code : TD
φD=φ6.3 to 10

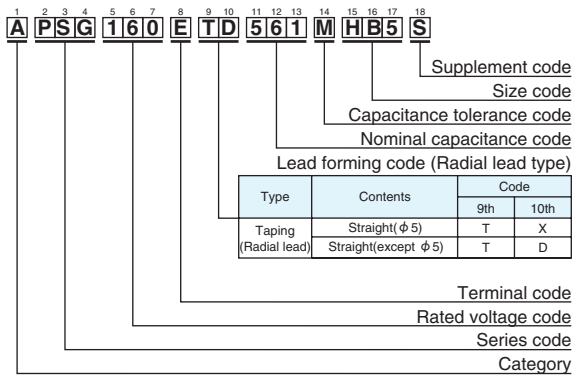


Code	Taping Code	Case size		φd	P	P ₀	P ₁	P ₂	F	W	W ₀	W ₁	W ₂	H	H ₁	φD ₀	Δh ₁	Δh ₂	t	T	Fig
		φD	A																		
tol.	---	---	---	±0.05	±1.0	±0.2	±0.7	±1.0	$\pm \frac{0.8}{0.2}$	±0.5	min.	±0.5	max.	±0.75	max.	±0.2	±0.2	±0.2	±0.3	±1.0	
Nominal	TX	5	8	0.45 ^{*1}	12.7	12.7	5.35	6.35	2.0 ^{*2}	18	10	9.0	2.5	18.5	28.25	4.0	0	0	0.7	0	1
		6.3	5	0.45	12.7	12.7	5.1	6.35	2.5	18	10	9.0	2.5	18.5	28.25	4.0	0	0	0.7	0	2
		6.3	8	0.6	12.7	12.7	5.1	6.35	2.5	18	10	9.0	2.5	18.5	28.75 ^{*1}	4.0	0	0	0.7	0	2
		6.3	10.5	0.5	12.7	12.7	5.1	6.35	2.5	18	10	9.0	2.5	18.5	30.05	4.0	0	0	0.7	0	2
		8	6	0.6	12.7	12.7	4.6	6.35	3.5	18	10	9.0	2.5	20.0	28.25 ^{*1}	4.0	0	0	0.7	0	2
		8	8	0.6	12.7	12.7	4.6	6.35	3.5	18	10	9.0	2.5	20.0	29.75	4.0	0	0	0.7	0	2
		8	11.5	0.6 ^{*1}	12.7	12.7	4.6	6.35	3.5	18	10	9.0	2.5	20.0	33.75	4.0	0	0	0.7	0	2
		8	16	0.6	12.7	12.7	4.6	6.35	3.5	18	10	9.0	2.5	20.0	38.25	4.0	0	0	0.7	0	2
		8	20	0.6	12.7	12.7	4.6	6.35	3.5	18	10	9.0	2.5	20.0	42.25	4.0	0	0	0.7	0	2
		10	10.5	0.6	12.7	12.7	3.85	6.35	5.0	18	10	9.0	2.5	18.5	30.75	4.0	0	0	0.7	0	2
		10	11.5	0.6 ^{*1}	12.7	12.7	3.85	6.35	5.0	18	10	9.0	2.5	18.5	32.25	4.0	0	0	0.7	0	2
		10	12.5	0.6	12.7	12.7	3.85	6.35	5.0	18	10	9.0	2.5	18.5	33.25	4.0	0	0	0.7	0	2
		10	16	0.6	12.7	12.7	3.85	6.35	5.0	18	10	9.0	2.5	18.5	36.75	4.0	0	0	0.7	0	2
10	20	0.6	12.7	12.7	3.85	6.35	5.0	18	10	9.0	2.5	18.5	40.75	4.0	0	0	0.7	0	2		

* 1 : Each product family has different value. Please refer to each page.
* 2 : For case size φ5×8 (Taping code : TX), H dimension shall be 2.0^{+0.5/-0.2}.

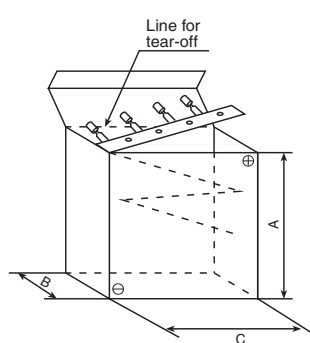
TAPING CODE

Example



QUANTITY PER AMMO PACK

Ammo pack box



Typical example

Case size φD×L(mm)	A (mm)	B (mm)	C (mm)	Quantity (pcs.)	
φ5	L=8mm	240	51	336	2,000
	L=5 & 8mm	285	51	336	
φ6.3	L=10.5mm	284	51	336	2,000
	L=6 to 11.5mm	240	51	336	
φ8	L=16mm	240	56	336	1,000
	L=20mm	240	62	336	
	L=10.5 to 12.5mm	190	51	337	
φ10	L=16mm	308	56	337	800
	L=20mm	308	62	337	

RADIAL LEAD TYPE TAPING SPECIFICATIONS (Applicable standard JIS C 0806-2)

Aluminum Electrolytic Capacitors

◆ DIMENSION [mm]

Fig.1

Taping Code : TA, TC
φD=φ4 to 8

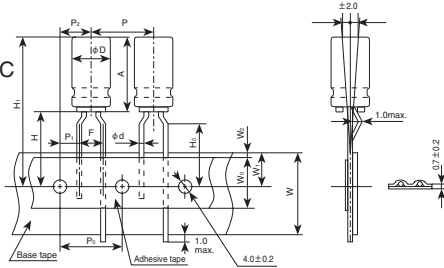


Fig.2

Taping Code : TD
φD=φ5
φD×L=φ4×7

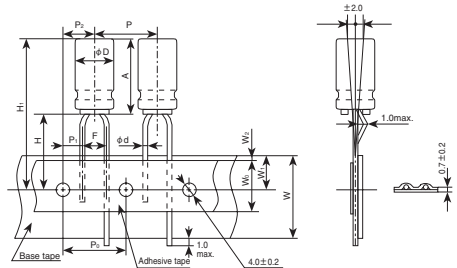


Fig.3

Taping Code : TD
φD=φ6.3 to 12.5

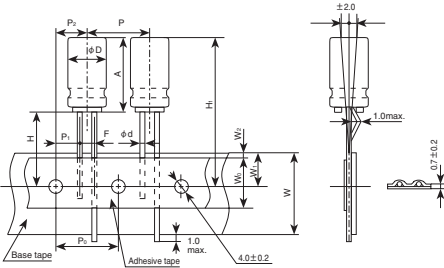
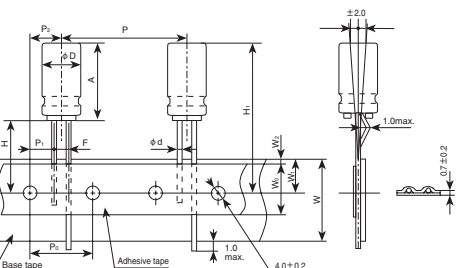


Fig.4

Taping Code : TE
φD=φ12.5

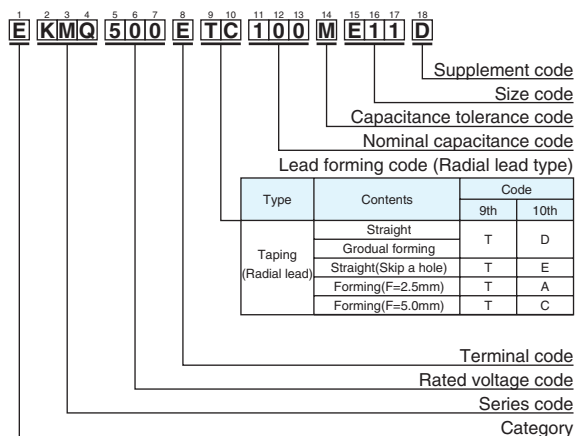


Code	Taping Code	Case size		φd	P	P ₀	P ₁	P ₂	F	W	W ₀	W ₁	W ₂	H	H ₀	H ₁	Fig
		φD	A														
tol.		—	—	±0.05	±1.0	±0.2	±0.7	±1.0	±0.2	±0.5	min.	±0.5	max.	±0.75	±0.5		
Nominal	TA	4	5	0.45	12.7	12.7	5.1 3.85	6.35	2.5 5	18.0	6.0	9.0	1.5	17.5	16.0	H ₁ =H+A Check insertion machine specs.	1
	TC		7	0.45	12.7	12.7	5.1 3.85	6.35	2.5 5	18.0	6.0	9.0	1.5	18.5 ^{*2} 17.5	16.0		2
	TD		11.5	0.45	12.7	12.7	5.1 3.85	6.35	2.5 5	18.0	10.0	9.0	1.5	17.5	16.0		1
	TC		5 to 7	0.45	12.7	12.7	5.1 3.85	6.35	2.5 5	18.0	6.0	9.0	1.5	18.5 17.5	16.0		2
	TD	9 to 15	0.5 ^{*2}	12.7	12.7	5.1 3.85	6.35	2.5 5	18.0	10.0	9.0	1.5	18.5	16.0	2		
	TC														1		
	TD	6.3	5 to 7	0.45	12.7	12.7	5.1 3.85	6.35	2.5 5	18.0	6.0	9.0	1.5	18.5 17.5	16.0		3
	TC																1
	TD	9 to 15	0.5	12.7	12.7	5.1 3.85	6.35	2.5 5	18.0	10.0	9.0	1.5	18.5	16.0	3		
	TC														1		
	TD	8	5	0.45	12.7	12.7	5.1 3.85	6.35	2.5 5	18.0	6.0	9.0	1.5	18.5 17.5	16.0		3
	TC																1
	TD	7	0.45	12.7	12.7	3.85	6.35	5	18.0	6.0	9.0	1.5	17.5	16.0	1		
	TC														1		
	TD	9 to 20	0.6	12.7	12.7	4.6 3.85	6.35	3.5 5	18.0	10.0	9.0	1.5	20.0	16.0	3		
	TC														1		
tol.		±0.5	max.	±0.05	±1.0	±0.3	±0.7	±1.3	±0.2	±0.5	min.	±0.5	max.	±2.0	—		
Nominal	TD	10	21	0.6 ^{*2}	12.7	12.7	3.85	6.35	5	18.0	12.5	9.0	1.5	18.0	—		3
	TD	12.5	26	0.6 ^{*2}	15	15	5.0	7.5	5	18.0	12.5	9.0	1.5	18.0	—		3
	TE			0.6 ^{*2}	25.4	12.7	3.85	6.35	5	18.0	12.5	9.0	1.5	18.0	—		4

* 1 : Each product family has different value. Please refer to each page.
 * 2 : For case size φ4×7 (Taping code : TD), H dimension shall be 18.5^{-0.5/+0.75}.
 * 3 : The taping for size φ16 and φ18 is available as a custom design.

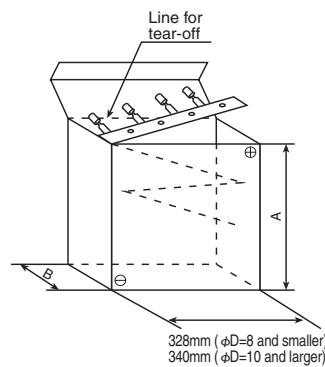
TAPING CODE

Example



QUANTITY PER AMMO PACK

Ammo pack box

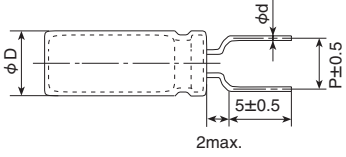
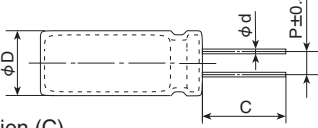
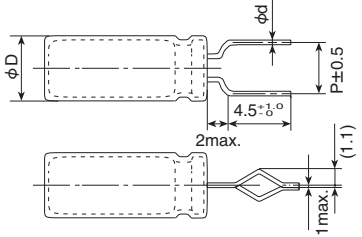
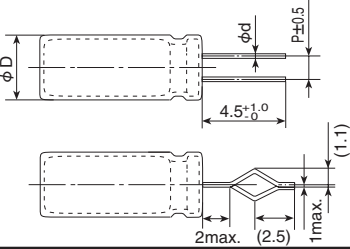
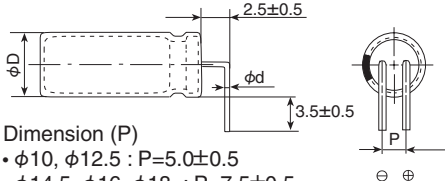
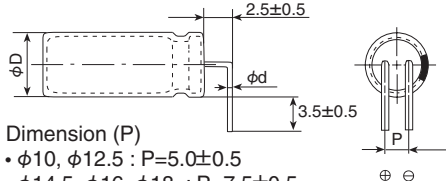
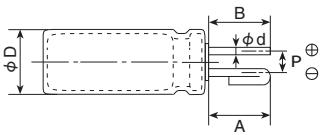


Typical example

Case size φD×L(mm)	A (mm)	B (mm)	Quantity (pcs.)
φ4	L=5 & 7mm	183	42
	L=11.5mm	183	51
φ5	L=5 & 7mm	232	42
	L=9 to 15mm	232	51
φ6.3	L=5 & 7mm	282	42
	L=9 to 15mm	284	51
φ8	L=5 & 7mm	232	42
	L=9 to 15mm	232	51
φ10	L=5 & 7mm	308	56
	L=9 to 15mm	308	62
φ12.5	L=5 & 7mm	308	62
	L=9 to 15mm	308	67

RADIAL LEAD TYPE (CUT/FORMED LEAD)

The following lead configurations are available. When ordering, please indicate the type of lead configurations by using the appropriate supplement code, such as C3, FC, MC or RC in the product part number.

Terminal type	Size	Terminal type	Size												
<p>●Lead code : FC (Forming Cut type)</p> 	φD=5 to 8	<p>●Lead code : C3 (Cutting type)</p>  <p>Dimension (C)</p> <ul style="list-style-type: none"> • φD= 4 to 8: C3: 3.5±0.5(Second standard C5: 5.0±0.5) • φD=10 to 18: C3: 3.5±0.5(Second standard C5: 5.0±0.5) 	φD=4 to 18												
<p>●Lead code : FM (Snap-in type)</p> 	φD=5 to 8	<p>●Lead code : MC (Snap-in type)</p> 	φD=10 to 18												
<p>●Lead code : BC (Horizontal type)*1</p>  <p>Dimension (P)</p> <ul style="list-style-type: none"> • φ10, φ12.5 : P=5.0±0.5 • φ14.5, φ16, φ18 : P=7.5±0.5 	φD=10 to 18	<p>●Lead code : BD (Horizontal type)*1</p>  <p>Dimension (P)</p> <ul style="list-style-type: none"> • φ10, φ12.5 : P=5.0±0.5 • φ14.5, φ16, φ18 : P=7.5±0.5 	φD=10 to 18												
<p>●Lead code : IJ (Forming Cut type)</p>  <p>Dimension</p> <table border="1"> <thead> <tr> <th>φD</th> <th>A · B</th> <th>φd</th> <th>P</th> </tr> </thead> <tbody> <tr> <td>10 to 12.5</td> <td>3.2±0.5</td> <td>0.6</td> <td>5.0±0.5</td> </tr> <tr> <td>14.5 to 18</td> <td>3.2±0.5</td> <td>0.8</td> <td>7.5±0.5</td> </tr> </tbody> </table>	φD	A · B	φd	P	10 to 12.5	3.2±0.5	0.6	5.0±0.5	14.5 to 18	3.2±0.5	0.8	7.5±0.5	φD=10 to 18	<p>* 1 Conventionally, lead forming code is used in common by (BC) for two type of the lead bent directions. We added lead forming code (BD) newly and clarified the lead bent directions. Please place an order after the choice for an appropriate lead forming code depending on condition of use.</p>	
φD	A · B	φd	P												
10 to 12.5	3.2±0.5	0.6	5.0±0.5												
14.5 to 18	3.2±0.5	0.8	7.5±0.5												

* Please consult with us about other terminal forming.

◆DIMENSION (P) [mm]

Size	Lead forming	Cutting type		Snap-in type	
		FC	C3(C5)	FM	MC
φ4		—	1.5	—	—
φ5		5.0	2.0	5.0	—
φ6.3		5.0	2.5	5.0	—
φ8	5L	5.0	2.5	5.0	—
	7L min.	5.0	3.5	5.0	—
φ10		—	5.0	—	5.0
φ12.5		—	5.0	—	5.0
φ14.5		—	7.5	—	7.5
φ16		—	7.5	—	7.5
φ18		—	7.5	—	7.5

* Please refer to dimensions of each series for lead-wire diameter (φd).

MINIMUM ORDER QUANTITY

Please order by minimum order quantity.

◆SURFACE MOUNT

●Vertical



Series	Size code	Quantity (pcs)	
		Taping	Tray (pcs/box)
Alchip™ MVA/MVE/MZR MZJ/MZA/MVY MZJ/MZE/MZK MLA/MLF/MLE MLK/MVL/MVJ MVH/MHL/MHB MHJ/MHK/MKB MV-BP/MVK-BP	D55, D60, D61	2,000	—
	D73	1,500	—
	E40, E46, E55, E60, E61, E73	1,000	—
	F45, F46, F55, F60, F61, F73	1,000	—
	F80, H80	900	—
	F90	800	—
	H63, H70	1,000	—
	HA0	500	—
	HCO	400	—
	J80, JA0	500	—
	JCO	400	—
	KE0	250*1	600
	KG5	200*1	600
Hybrid HXA/HXB	LH0	175*1	400
	LN0	125*1	400
	MH0	150*1	300
	MN0	100*1	300

*1 : Changed the packing quantity. (Size Code : KE0 to MN0)

◆RADIAL



Size	Quantity (pcs)		
	Bagged *2	Taping	Packaging
φ 4	200	2,000	—
φ 5	200	2,000	—
φ 6.3	200	2,000	—
φ 8	200	1,000	—
φ 10	Height ≤25mm	200(100)*3	800(500)*3
	Height 30mm	200	500
φ 12.5	Height ≤25mm	100	1,500
	Height 30mm		750
φ 14.5	50	250	500
φ 16	50	250	500
φ 18	50	250	500

*2 Standard bagged quantity.

*3 Minimum order quantity for PSG(11.5L max.)/PSK/PSF/PSE/PSC/PSA/PS series.

◆SNAP-IN



200 pieces