



Earthing & lightning protection
UK price list
Valid from 1 May 2015



Contents

Introduction

Order information	1/1
-------------------	-----

Lightning protection

Conductors	2/1
Air termination	2/7
Conductor network	2/10
Accessories	2/20

Earthing

Earth electrodes	3/24
Earth bonds & clamps	3/29
Earth bars	3/36
Compression connectors & tools	3/40

FurseWELD exothermic welding

FurseWELD components	4/44
SureSHOT	4/45
Terminal lugs	4/46
Handle clamps & accessories	4/47

Electronic systems protection

Mains power protection	5/49
Data & signal protection	5/52
Telecoms & computer line protection	5/56
Specific systems protection	5/57
Accessories	5/59

Part number index

Alphanumeric product list	6/62
---------------------------	------

1

2

3

4

5

6

Introduction

Order information

1

Minimum order value

A minimum order charge of £50 Nett Goods Value applies.

Carriage

For standard deliveries to mainland United Kingdom destinations, carriage will be paid on all orders over £500 nett goods value, despatched as one consignment. For deliveries to offshore islands, any additional charges will be invoiced to the customer at cost.

Non-deliveries

All non-deliveries must be notified within 7 days of despatch of materials. Furse cannot accept responsibility for consequential damages as a result of late or non-delivery.

Damage or shortage claims

All damage or shortage claims must be notified within 2 working days of receipt of order.

Drums

All drums will be invoiced at cost and will be credited on their return to our store.

Special items

For catalogue items not on this list and special items to meet your requirements, please contact our Sales Office.

Copper LME base rate

The price of items which are subject to copper variation are shown in six broad bands based on the LME copper rate.

Conductor lengths

Due to manufacturing tolerances it is not possible to guarantee exact conductor lengths. We therefore reserve the right to supply within 5% of the quota/order lengths and invoice accordingly. Orders for non-standard coil lengths may incur a cutting charge of up to 15% of the goods value.

Returns

Goods supplied in accordance with the Buyer's instructions can only be accepted for return with our prior consent, provided that they are unused and in good resaleable condition.

Risk

The risk in the goods passes to the Buyer, upon delivery of the goods to either the Buyer or to a carrier acting on behalf of the Buyer.

Property

The property in the goods will not pass to the Buyer until the full price of the goods and any outstanding monies is paid.

Conditions of sale

Our standard Conditions of Sale apply and can be obtained on request.

VAT

VAT will be invoiced at the appropriate rate. These prices apply to UK mainland customers only.

The above conditions only apply to the items covered by this price list. ABB AG reserves the right to alter the design, specification and price of the items within this list without notice.

Furse is a brandname owned by Thomas & Betts, a Member of the ABB Group. The Furse products are sold in the name and on behalf of Thomas & Betts Netherlands BV having its place of business in the Netherlands.

Lightning protection Conductors



Bare copper tape

Part No.	Overall Nominal Size (X x Y) (mm)	Copper LME Base Rate Price Per Metre £					
		4501-4600	4601-4700	4701-4800	4801-4900	4901-5000	5001-5100
TC005	12.5 x 1.5	4.37	4.45	4.53	4.62	4.70	4.80
TC010	12.5 x 3	8.77	8.94	9.11	9.29	9.45	9.62
TC015	20 x 1.5	7.14	7.31	7.47	7.62	7.78	7.93
TC020	20 x 3	14.04	14.34	14.63	14.94	15.23	15.53
TC020/100	20 x 3	14.04	14.34	14.63	14.94	15.23	15.53
TC025	25 x 1.5	8.77	8.94	9.11	9.29	9.45	9.62
TC026	25 x 2	9.60	9.88	10.15	10.42	10.71	10.98
TC030	25 x 3	14.45	14.86	15.28	15.70	16.10	16.52
TC030/50	25 x 3	14.45	14.86	15.28	15.70	16.10	16.52
TC035	25 x 4	19.30	19.72	20.14	20.55	20.96	21.38
TC040	25 x 6	28.72	29.31	29.90	30.50	30.54	31.69
TC039	30 x 2	14.04	14.34	14.63	14.94	15.23	15.53
TC042	30 x 3	17.43	17.80	18.17	18.52	18.89	19.24
TC044	30 x 4	23.25	23.73	24.22	24.71	25.21	25.69
TC043	30 x 5	28.72	29.31	29.90	30.50	30.54	31.69
TC045	31 x 3	18.03	18.43	18.83	19.22	19.61	20.01
TC048	31.5 x 4	24.47	24.96	25.46	25.96	26.46	26.95
TC050	31 x 6	36.11	36.86	37.61	38.36	39.13	39.88
TC055	38 x 3	22.14	22.61	23.07	23.54	24.00	24.47
TC060-FU	38 x 5	36.89	37.65	38.41	39.18	39.95	40.71
TC065	38 x 6	46.69	47.13	47.58	48.03	48.46	48.91
TC067	40 x 3	23.25	23.73	24.22	24.71	25.21	25.69
TC066	40 x 4	31.04	31.69	32.34	32.99	33.63	34.28
TC071	40 x 5	46.59	47.57	48.54	49.52	50.51	51.48
TC068	40 x 6	48.93	49.96	50.98	52.02	53.05	54.08
TC069	40 x 6.3	51.37	52.46	53.53	54.62	55.70	56.78
TC070	50 x 3	28.72	29.31	29.90	30.50	31.09	31.69
TC075	50 x 4	38.79	39.61	40.44	41.25	42.07	42.89
TC078	50 x 5	48.48	49.49	50.50	51.51	52.52	53.53
TC080	50 x 6	57.37	58.56	59.75	60.94	62.13	63.32
TC082	50 x 6.3	61.17	62.45	63.73	65.02	66.30	67.59
TC090	50 x 7	66.90	68.30	69.69	71.07	72.46	73.84

2



Bare aluminium tape

Part No.	Conductor Size (X x Y) (mm)	Price Per Metre £
TA005	12.5 x 1.5	1.35
TA020	20 x 3	3.74
TA030	25 x 3	4.02
TA042	30 x 3	8.07
TA040	25 x 6	5.18
TA068	40 x 6	12.74
TA080	50 x 6	16.10

Lightning protection Conductors

2



Bare solid circular

Part No.	Diameter (A) (mm)	Copper LME Base Rate Price Per Metre £					
		4501-4600	4601-4700	4701-4800	4801-4900	4901-5000	5001-5100
Copper conductor							
CD035	8	9.10	9.30	9.49	9.68	9.87	10.06
Aluminium conductor							
CD080	8						2.83



Bare stranded copper cable

Part No.	Cross-Sectional Area (mm ²)	Copper LME Base Rate Price Per Metre £					
		4501-4600	4601-4700	4701-4800	4801-4900	4901-5000	5001-5100
Soft drawn stranded copper cable							
CB006	6	1.36	1.38	1.40	1.42	1.44	1.46
CB016	16	3.66	3.72	3.78	3.85	3.91	3.98
CB025	25	6.00	6.11	6.21	6.32	6.42	6.53
CB035	35	8.31	8.47	8.64	8.79	8.95	9.10
CB050-FU	50	8.63	8.79	8.95	9.11	9.27	9.43
CB070	70	13.16	13.35	13.54	13.74	13.92	14.11
CB095	95	20.24	20.65	21.05	21.45	21.85	22.25
CB120	120	25.63	26.12	26.61	27.10	27.59	28.08
CB150-FU	150	33.09	33.72	34.35	34.97	35.60	36.22
CB185	185	41.26	42.02	42.78	43.56	44.32	45.09
CB240	240	54.15	55.16	56.16	57.18	58.19	59.20
CB300-FU	300	63.30	64.47	65.63	66.80	67.96	69.13
CB400-FU	400	84.36	85.91	87.47	89.02	90.59	92.14
Tinned soft drawn stranded copper cable							
CB070-T	70	14.57	14.78	15.00	15.21	15.42	15.64
Hard drawn stranded copper cable							
CB071	70	12.78	12.97	13.17	13.36	13.55	13.74



Tinned copper tape

Part No.	Conductor Size (X x Y) (mm)	Copper LME Base Rate Price Per Metre £					
		4501-4600	4601-4700	4701-4800	4801-4900	4901-5000	5001-5100
TC225-FU	12.5 x 1.5	6.71	6.79	6.87	6.96	7.04	7.13
TC230	25 x 3	18.21	18.50	18.80	19.09	19.40	19.69
TC239	30 x 2	16.39	16.68	16.98	17.27	17.58	17.87
TC240	25 x 6	36.34	36.94	37.54	38.13	38.73	39.32
TC245	31 x 3	24.86	25.30	25.74	26.17	26.60	27.04
TC260	38 x 5	51.01	52.12	53.23	54.34	55.43	56.54
TC280	50 x 6	67.72	68.92	70.11	71.31	72.51	73.71

Lightning protection Conductors



Bimetalllic cable

Part No.	AWG	Cross-Sectional Area (mm ²)	Nominal Diameter (mm)	Stranding No. / AWG	Price Per Metre £
BC001	1/0	50	9.96	3/5	POA
BC002	1	40	8.86	3/6	POA
BC003	2	35	7.9	3/7	POA
BC004	3	25	7.04	3/8	POA
BC005	4	20	6.27	3/9	POA
BC006	5	16	5.59	3/10	POA
BC007	6	10	4.42	3/12	POA
BC008	300	150	15.6	7/4	POA
BC009	4/0	120	13.9	7/5	POA
BC010	3/0	95	12.3	7/6	POA
BC011	2/0	70	11	7/7	POA
BC012	1/0	50	9.78	7/8	POA
BC013	1	40	8.71	7/9	POA
BC014	2	35	7.77	7/10	POA



Hard drawn copper bar

Part No.	Overall Nominal Size (X x Y) (mm)	Copper LME Base Rate Price Per Metre £					
		4501-4600	4601-4700	4701-4800	4801-4900	4901-5000	5001-5100
Bare hard drawn bar							
BA205	25 x 3	17.64	17.85	18.06	18.27	18.48	18.69
BA210	25 x 6	34.74	35.16	35.59	36.01	36.43	36.86
BA225	38 x 6	55.58	56.24	56.90	57.55	58.21	58.87
BA230	50 x 6	69.88	70.72	71.56	72.40	73.23	74.08
BA235	50 x 10	119.97	121.40	122.83	124.28	125.71	127.14
BA240	75 x 6	108.00	109.29	110.59	111.88	113.18	114.47
BA250-FU	100 x 6	143.62	145.35	147.09	148.81	150.55	152.28
Tinned hard drawn bar							
BA231	50 x 6	81.47	82.32	83.15	83.99	84.83	85.67

* Additional sizes available on request

Lightning protection Conductors

2



Flexible flat copper braid

Part No.	Overall Nominal Size (X x Y) (mm)	Copper LME Base Rate Price Per Metre £					
		4501-4600	4601-4700	4701-4800	4801-4900	4901-5000	5001-5100
Bare flat braid							
BD020	12 x 1	8.04	8.12	8.20	8.28	8.37	8.45
BD025	15 x 1.5	8.17	8.25	8.33	8.42	8.50	8.60
BD026	19 x 2.5	10.86	10.98	11.10	11.22	11.34	11.45
BD027	32 x 6	34.97	35.35	35.72	36.09	36.46	36.83
BD028	25 x 3	16.66	16.81	16.97	17.12	17.27	17.42
BD030	25 x 3.5	17.33	17.51	17.68	17.84	18.01	18.18
BD031	30 x 5	33.32	33.63	33.93	34.24	34.54	34.85
BD032	37 x 6	63.60	64.21	64.82	65.43	66.04	66.65
BD033	45 x 6	POA	POA	POA	POA	POA	POA
BD034	50 x 8	POA	POA	POA	POA	POA	POA
Tinned flat braid							
BD020-T	12 x 1	8.71	8.80	8.89	8.98	9.06	9.15
BD025-T	15 x 1.5	8.80	8.89	8.98	9.07	9.17	9.27
BD026-T	19 x 2.5	11.74	11.87	11.99	12.12	12.24	12.37
BD027-T	32 x 6	37.75	38.16	38.57	38.96	39.37	39.77
BD028-T	25 x 3	18.00	18.17	18.33	18.49	18.66	18.83
BD031-T	30 x 5	36.01	36.33	36.66	36.99	37.32	37.65
BD032-T	37 x 6	68.68	69.33	69.99	70.65	71.31	71.96
BD033-T	45 x 6	POA	POA	POA	POA	POA	POA
BD034-T	50 x 8	POA	POA	POA	POA	POA	POA
BD035	25 x 3.5	18.57	18.77	18.96	19.15	19.33	19.53



Flexible circular copper braid

Part No.	Overall Nominal Diameter (mm)	Copper LME Base Rate Price Per Metre £					
		4501-4600	4601-4700	4701-4800	4801-4900	4901-5000	5001-5100
Bare circular braid							
BD006-FU	4.2	8.04	8.12	8.20	8.28	8.37	8.45
BD010-FU	5.4	8.17	8.25	8.33	8.42	8.50	8.60
BD016-FU	7	10.86	10.98	11.10	11.22	11.34	11.45
BD025-FU	8.5	16.66	16.81	16.97	17.12	17.27	17.42
BD035-FU	10.5	17.33	17.51	17.68	17.84	18.01	18.18
BD050-FU	11.5	33.32	33.63	33.93	34.24	34.54	34.85
BD070-FU	14.5	34.97	35.35	35.72	36.09	36.46	36.83
BD095-FU	16	63.60	64.21	64.82	65.43	66.04	66.65
Tinned circular braid							
BD006-FU-T	4.2	8.71	8.80	8.89	8.98	9.06	9.15
BD010-FU-T	5.4	8.80	8.89	8.98	9.07	9.17	9.27
BD016-FU-T	7	11.74	11.87	11.99	12.12	12.24	12.37
BD025-FU-T	8.5	18.00	18.17	18.33	18.49	18.66	18.83
BD035-FU-T	10.5	18.57	18.77	18.96	19.15	19.33	19.53
BD050-FU-T	11.5	36.01	36.33	36.66	36.99	37.32	37.65
BD070-FU-T	14.5	37.75	38.16	38.57	38.96	39.37	39.77
BD095-FU-T	16	68.68	69.33	69.99	70.65	71.31	71.96

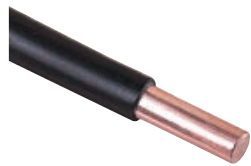
Lightning protection Conductors



PVC covered copper tape

Part No.	Colour Range	Conductor Size (X x Y) (mm)	Copper LME Base Rate Price Per Metre £					
			4501-4600	4601-4700	4701-4800	4801-4900	4901-5000	5001-5100
TC100	Black	12.5 x 1.5	5.06	5.14	5.22	5.31	5.39	5.49
TC105/50	Black	25 x 3	16.73	17.04	17.34	17.65	17.96	18.27
TC105-FU	Black	25 x 3	16.73	17.04	17.34	17.65	17.96	18.27
TC110	Green	25 x 3	16.73	17.04	17.34	17.65	17.96	18.27
TC110/50	Green	25 x 3	16.73	17.04	17.34	17.65	17.96	18.27
TC115/50	Grey	25 x 3	16.73	17.04	17.34	17.65	17.96	18.27
TC115-FU	Grey	25 x 3	16.73	17.04	17.34	17.65	17.96	18.27
TC120/50	Stone	25 x 3	16.73	17.04	17.34	17.65	17.96	18.27
TC120-FU	Stone	25 x 3	16.73	17.04	17.34	17.65	17.96	18.27
TC125/50	White	25 x 3	16.73	17.04	17.34	17.65	17.96	18.27
TC125-FU	White	25 x 3	16.73	17.04	17.34	17.65	17.96	18.27
TC130	Brown	25 x 3	16.73	17.04	17.34	17.65	17.96	18.27
TC130/50	Brown	25 x 3	16.73	17.04	17.34	17.65	17.96	18.27
TC140-FU	Green	25 x 6	31.40	32.00	32.60	33.21	33.81	34.42
TC145	Green	50 x 6	64.60	65.79	66.97	68.16	69.35	70.54

2



PVC covered copper solid circular

Part No.	Colour Range	Copper LME Base Rate Price Per Metre £					
		4501-4600	4601-4700	4701-4800	4801-4900	4901-5000	5001-5100
CD036	Black	10.30	10.49	10.67	10.85	11.02	11.21
CD038	Grey	10.30	10.49	10.67	10.85	11.02	11.21
CD039	Stone	10.30	10.49	10.67	10.85	11.02	11.21
CD040	White	10.30	10.49	10.67	10.85	11.02	11.21
CD041	Brown	10.30	10.49	10.67	10.85	11.02	11.21

* NB all conductor diameters 8 mm



PVC covered aluminium tape

Part No.	Conductor Size (X x Y) (mm)	Colour Range	Price Per Metre £
TA100	12.5 x 1.5	Black	2.51
TA104	20 x 3	Black	6.50
TA105	25 x 3	Black	6.55
TA110	25 x 3	Green	6.55
TA115	25 x 3	Grey	6.55
TA120	25 x 3	Stone	6.55
TA125	25 x 3	White	6.55
TA130	25 x 3	Brown	6.55



PVC covered aluminium solid circular

Part No.	Colour Range	Price Per Metre £
CD081	Black	4.55
CD083	Grey	4.55
CD084	Stone	4.55
CD085	White	4.55
CD086	Brown	4.55

* NB all conductor diameters 8 mm

Lightning protection Conductors

2



Green & yellow PVC insulated copper tape

Part No.	Conductor Size (X x Y) (mm)	Copper LME Base Rate Price Per Metre £					
		4501-4600	4601-4700	4701-4800	4801-4900	4901-5000	5001-5100
TC111/50	25 x 3	16.73	17.04	17.34	17.65	17.96	18.27
TC111-FU	25 x 3	16.73	17.04	17.34	17.65	17.96	18.27



Green & yellow PVC insulated stranded copper cable

Part No.	Cross-Sectional Area (mm ²)	Copper LME Base Rate Price Per Metre £					
		4501-4600	4601-4700	4701-4800	4801-4900	4901-5000	5001-5100
CC016	16	4.21	4.28	4.35	4.42	4.50	4.57
CC025	25	6.98	7.08	7.18	7.29	7.40	7.51
CC035	35	9.52	9.68	9.85	10.01	10.16	10.32
CC050	50	10.26	10.42	10.59	10.75	10.90	11.06
CC070	70	13.50	13.70	13.89	14.08	14.26	14.46
CC095	95	22.89	23.29	23.68	24.07	24.47	24.85
CC120-FU	120	29.37	29.87	30.37	30.87	31.36	31.86
CC150-FU	150	35.56	36.19	36.81	37.44	38.07	38.69
CC185	185	48.21	48.97	49.73	50.50	51.27	52.03
CC240	240	61.77	62.77	63.76	64.76	65.77	66.76
CC300	300	74.07	75.22	76.38	77.54	78.70	79.86
CC400-FU	400	POA	POA	POA	POA	POA	POA



LSOH covered copper tape

Part No.	Colour Range	Conductor Size (mm)	Copper LME Base Rate Price Per Metre £					
			4501-4600	4601-4700	4701-4800	4801-4900	4901-5000	5001-5100
TC910	Green	25 x 3	19.41	19.70	19.99	20.29	20.59	20.89
TC910/50	Green	25 x 3	19.41	19.70	19.99	20.29	20.59	20.89
TC940	Green	25 x 6	38.99	39.60	40.21	40.81	41.42	42.02
TC980	Green	50 x 6	76.89	78.08	79.27	80.46	81.65	82.83



Lead covered copper tape

Part No.	Conductor Size (X x Y) (mm)	Copper LME Base Rate Price Per Metre £					
		4501-4600	4601-4700	4701-4800	4801-4900	4901-5000	5001-5100
TC330	25 x 3	36.86	37.16	37.45	37.74	38.05	38.34

Lightning protection Conductors



PVC protective down conductor guard

Part No.	Length (mm)	Colour Range	Price Each £
GC205	3000	Black	19.81
GC215	3000	Grey	19.81
GC220	3000	Stone	19.81
GC225	3000	White	19.81
GC230	3000	Brown	19.81



Anti-vandal down conductor guard

Part No.	Length (mm)	Price Each £
AV005	3000	36.53

Air termination



Air rod

Part No.	Rod Length (mm)	Rod Diameter (mm)	Thread Size	Conductor Material	Price Each £
For use with flat tape					
RA215	500	15	M16	Copper	27.82
RA225	1000	15	M16	Copper	50.82
RA230	1500	15	M16	Copper	75.32
RA240	2000	15	M16	Copper	92.80
RA250-FU	3000	15	M16	Copper	134.77
RA015	500	15	M16	Aluminium	14.85
RA025	1000	15	M16	Aluminium	23.41
RA030	1500	15	M16	Aluminium	33.02
RA040	2000	15	M16	Aluminium	42.62
RA050	3000	15	M16	Aluminium	61.81
For use with solid circular conductor					
RA400-FU	500	10	M10	Copper	17.56
RA402	1000	10	M10	Copper	29.59
RA080	500	10	M10	Aluminium	10.34
RA085	1000	10	M10	Aluminium	20.03
For use with stranded conductor					
RA215	500	15	M16	Copper	27.82
RA225	1000	15	M16	Copper	50.82
RA230	1500	15	M16	Copper	75.32
RA240	2000	15	M16	Copper	92.80
RA250-FU	3000	15	M16	Copper	134.77



Air rod base

Part No.	Rod Diameter (mm)	Max. Conductor Width (mm)	Conductor Material	Price Each £
SD105-H	15	25	Copper	25.68
SD003-H	15	25	Aluminium	13.46
SD120	15	50	Copper	56.16

Lightning protection

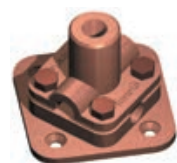
Air termination

2



Horizontal or vertical air rod base

Part No.	Conductor Size (mm)	Thread Size	Conductor Material	Mounting Plane	Price Each £
SD305	Ø8	M10	Copper	Horizontal	21.90
SD307	Ø8	M10	Copper	Vertical	21.90
SD005	Ø8	M10	Aluminium	Horizontal	13.76
SD007	Ø8	M10	Aluminium	Vertical	13.76



Flat saddle

Part No.	Conductor Size (mm ²)	Rod Diameter (mm)	Conductor Material	Price Each £
SD155	50	15	Copper	49.06
SD160	70	15	Copper	49.06
SD165	95	15	Copper	49.06



Ridge saddle

Part No.	Rod Diameter (mm)	Max. Conductor Width (mm)	Conductor Material	Price Each £
SD115	15	31	Copper	48.22



Rod brackets

Part No.	Rod Diameter (mm)	Rod Material	Price Per Pair £
BR105	15	Copper	47.99
BR005	15	Aluminium	32.59



Rod to conductor coupling

Part No.	Rod Diameter (mm)	Rod Material	Conductor Size	Price Each £
For use with flat tape conductor				
CG600	15	Copper	25 x 3 mm	19.36
CG500	15	Aluminium	25 x 3 mm	14.25
For use with stranded conductor				
CG705	15	Copper	50 - 70 mm ²	23.98
CG710	15	Copper	95 mm ²	23.98



Multiple point

Part No.	Rod Diameter (mm)	Conductor Material	Price Each £
RA600	15	Copper	46.74
RA500	15	Aluminium	27.89

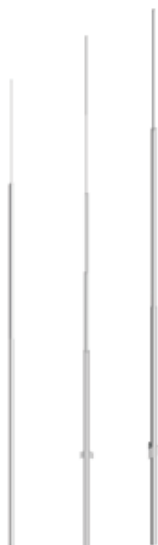
Lightning protection

Air termination



Strike pad

Part No.	Conductor Material	Price Each £
PL010	Copper	23.27
PL005	Aluminium	16.01
SM010	Copper stem for use with PL010	7.51



Free-standing interception pole

Part No.	Pole Height (m)	Pole Diameter (mm)	Pole Construction	Price Each £
912000-FU	3	10-42	2 pce	106.59
912001-FU	3.5	10-42	2 pce	133.39
912002-FU	4	10-42	2 pce	193.86
912003-FU	4.5	10-42	2 pce	350.94
912004-FU	5	10-42	2 pce	354.68
912005-FU	5.5	10-42	2 pce	392.70
912006-FU	6	10-60	3 pce	514.56
912007-FU	6.5	10-60	3 pce	575.96
912008-FU	7	10-60	3 pce	637.36
912009-FU	7.5	10-60	3 pce	699.08
912010-FU	8	10-60	3 pce	760.47
912011-FU	9	10-60	3 pce	836.52
912013-FU	10	10-60	3 pce	1270.98



Free-standing interception pole base frame

Part No.	Frame Type	Frame Dimension (mm)	Price Each £
499000-FU	Square base	650 x 650	264.29
499005-FU	Tripod base	1350 x 1350	282.68
499006-FU	Tripod base	1850 x 1850	421.38
499007-FU	H shaped base	1850 x 1850	762.03



Free-standing interception pole base

Part No.	Description	Price Each £
499100-FU	Square concrete base 300 x 300 x 60 mm	11.01
499101-FU	Square concrete base 300 x 300 x 80 mm	15.26
103103-FU	Circular concrete base with M16 insert	15.66
103101-FU	Circular concrete base with M16 insert	17.45
103110-FU	Circular concrete base with M16 insert	24.15
103118-FU	Circular concrete base with M16 insert	30.39

Accessories

103102-FU	Protective polyethylene tray for circular concrete blocks	5.88
919828-FU	Stainless steel clamp for connecting 25 x 3 mm copper tape to 5-19 mm thickness steel	11.88

Lightning protection

Conductor network

2



Swing lid DC tape clip

Part No.	Conductor Size (mm)	Price Each £
For use with bare copper		
CP210-H	25 x 3	2.78
CP220-H	25 x 6	4.41
For use with bare aluminium		
CP110-H	25 x 3	2.31
CP120-H	25 x 6	7.95



Adjustable DC tape clip

Part No.	Conductor Size (mm)	Price Each £
For use with bare copper		
CP230-H	31 x 3 and 31 x 6	6.08
CP240-H	38 x 3, 38 x 6 and 40 x 6	7.32
CP260-H	50 x 3 and 50 x 6	5.80



DC tape clip

Part No.	Conductor Size (mm)	Price Each £
For use with bare copper		
CP205	20 x 3	4.62
CP216	25 x 4	4.77
CP227	30 x 5	4.97
CP245	38 x 5	7.45
CP241	40 x 4	7.57
CP256	50 x 4	7.57
For use with PVC covered copper		
CP215	25 x 3	7.06
CP225	25 x 6	7.62
CP265	50 x 6	13.61
For use with lead covered copper		
CP305	25 x 3	24.94
For use with bare aluminium		
CP105	20 x 3	4.05
CP125	50 x 6	4.91
For use with PVC covered aluminium		
CP115	25 x 3	4.64
CP130	50 x 6	9.89

Lightning protection Conductor network



Tape clip

Part No.	Conductor Size (mm)	Price Each £
For use with bare copper		
CP510	20 x 3	0.87
CP515	25 x 3	0.87
For use with bare aluminium		
CP405	20 x 3	2.46
CP410	25 x 3	0.79
CP415	25 x 6	0.81
For use with PVC covered tape		
CP517	25 x 3	2.19



One hole cable clip

Part No.	Conductor Size (mm)	Conductor Material	Price Each £
For use with solid circular conductor			
CP905	Ø8	Copper	0.99
CP925	Ø8	Aluminium	0.97
CP915	Ø10*	Copper	0.99
CP935	Ø10*	Aluminium	0.97
For use with stranded conductor			
CP910	50 mm ²	Copper	1.00
CP915	70 mm ²	Copper	0.99
CP920	95 mm ²	Copper	3.24

*PVC covered Ø8mm conductor



Heavy duty cast cable saddle

Part No.	Conductor Size (mm)	Conductor Material	Price Each £
For use with solid circular conductor			
CP805	Ø8	Copper	7.61
CP806	Ø8	Aluminium	6.82
CP815	Ø10*	Copper	7.61
CP816	Ø10*	Aluminium	6.82
For use with stranded conductor			
CP810	50 mm ²	Copper	7.61
CP815	70 mm ²	Copper	7.61
CP835	95 mm ²	Copper	9.86

*PVC covered Ø8mm conductor

Lightning protection Conductor network

2



Non-metallic DC tape clip

Part No.	Conductor Size (mm)	Colour Range	Price Each £
For use with bare tape			
CP005	20 x 3	Brown	0.73
CP010	20 x 3	Grey	0.73
CP015	25 x 3	Brown	0.73
CP020	25 x 3	Grey	0.73
CP060*	38 x 5	Brown	1.43
CP065*	50 x 6	Brown	1.90
For use with PVC covered tape			
CP025	25 x 3	Brown	0.79
CP030	25 x 3	Black	0.79
CP035	25 x 3	Green	0.79
CP040	25 x 3	Grey	0.79
CP045	25 x 3	Stone	0.79
CP050	25 x 3	White	0.79

*Not as illustrated (drawing available on request)



Non-metallic push-in clip

Part No.	Conductor Size (mm)	Colour Range	Price Each £
For use with bare solid circular conductor			
CP887	Ø8	Brown	0.92
CP872	Ø8	Grey	0.92
For use with PVC covered solid circular conductor			
CP886	Ø10*	Brown	0.92
CP861	Ø10*	Black	0.92
CP871	Ø10*	Grey	0.92
CP876	Ø10*	Stone	0.92
CP881	Ø10*	White	0.92

*PVC covered Ø8mm conductor



Glue down DC tape clip

Part No.	Conductor Size (mm)	Colour Range	Price per 50 £
For use with bare tape			
GD015	25 x 3	Brown	156.46
GD020	25 x 3	Grey	156.46
For use with PVC covered tape			
GD025	25 x 3	Brown	156.46
GD030	25 x 3	Black	156.46
GD040	25 x 3	Grey	156.46
GD045	25 x 3	Stone	156.46
GD050	25 x 3	White	156.46

Lightning protection Conductor network



Glue down push-in clip

Part No.	Conductor Size (mm)	Colour Range	Price Per 50 £
For use with bare solid circular conductor			
GD887	Ø8	Brown	162.05
GD872	Ø8	Grey	162.05
For use with PVC covered solid circular conductor			
GD861	Ø10*	Black	162.05
GD871	Ø10*	Grey	162.05
GD876	Ø10*	Stone	162.05
GD881	Ø10*	White	162.05
GD886	Ø10*	Brown	162.05

*PVC covered Ø8mm conductor



Self adhesive DC tape clip

Part No.	Part No. (branded)	Conductor Size (mm)	Colour Range	Price Each £
For use with bare tape				
CA015	CA015-FU	25 x 3	Brown	3.60
CA020	CA020-FU	25 x 3	Grey	3.60
For use with PVC covered tape				
CA025	CA025-FU	25 x 3	Brown	3.60
CA030	CA030-FU	25 x 3	Black	3.60
CA040	CA040-FU	25 x 3	Grey	3.60
CA045	CA045-FU	25 x 3	Stone	3.60
CA050	CA050-FU	25 x 3	White	3.60



Self adhesive push-in clip

Part No.	Conductor Size (mm)	Colour Range	Price Each £
For use with bare solid circular conductor			
CA872	Ø8	Grey	3.99
CA887	Ø8	Brown	3.99
For use with PVC covered tape			
CA861	Ø10*	Black	3.99
CA871	Ø10*	Grey	3.99
CA876	Ø10*	Stone	3.99
CA881	Ø10*	White	3.99
CA886	Ø10*	Brown	3.99

*PVC covered Ø8mm conductor

Lightning protection Conductor network

2



Solvent weldable DC tape clip

Part No.	Part No. (branded)	Conductor Size (mm)	Colour Range	Price Each £
For use with bare tape				
CW015	CW015-FU	25 x 3	Brown	3.15
CW020	CW020-FU	25 x 3	Grey	3.15
For use with PVC covered tape				
CW025	CW025-FU	25 x 3	Brown	3.15
CW030	CW030-FU	25 x 3	Black	3.15
CW040	CW040-FU	25 x 3	Grey	3.15
CW045	CW045-FU	25 x 3	Stone	3.15
CW050	CW050-FU	25 x 3	White	3.15



Solvent weldable push-in clip

Part No.	Conductor Size (mm)	Colour Range	Price Each £
For use with bare solid circular conductor			
CW887	Ø8	Brown	3.29
CW872	Ø8	Grey	3.29
For use with PVC covered solid circular conductor			
CW886	Ø10*	Brown	3.29
CW871	Ø10*	Grey	3.29

*PVC covered Ø8mm conductor



Heat weldable clips for TPO/FPO roofing

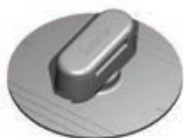
Part No.	Part No. (branded)	Conductor Size (mm)	Colour Range	Price Each £
For use with bare tape				
-	HW315-FU	25 x 3	Brown	2.59
HW321	HW320-FU	25 x 3	Grey	2.59
For use with PVC covered tape				
-	HW325-FU	25 x 3	Brown	2.59
-	HW330-FU	25 x 3	Black	2.59
HW341	HW340-FU	25 x 3	Grey	2.59
-	HW345-FU	25 x 3	Stone	2.59
-	HW350-FU	25 x 3	White	2.59

Lightning protection Conductor network



Heat weldable clips for Polyethylene roofing

Part No.	Part No. (branded)	Conductor Size (mm)	Colour Range	Price Each £
For use with bare tape				
-	HW415-FU	25 x 3	Brown	2.59
HW421	HW420-FU	25 x 3	Grey	2.59
For use with PVC covered tape				
-	HW425-FU	25 x 3	Brown	2.59
-	HW430-FU	25 x 3	Black	2.59
HW441	HW440-FU	25 x 3	Grey	2.59
-	HW445-FU	25 x 3	Stone	2.59
-	HW450-FU	25 x 3	White	2.59



Heat weldable DC tape clip for PVC roofing

Part No.	Part No. (branded)	Conductor Size (mm)	Colour Range	Price Each £
For use with bare tape				
-	HW015-FU	25 x 3	Brown	2.59
HW021	HW020-FU	25 x 3	Grey	2.59
For use with PVC covered tape				
-	HW025-FU	25 x 3	Brown	2.59
-	HW030-FU	25 x 3	Black	2.59
HW041	HW040-FU	25 x 3	Grey	2.59
-	HW045-FU	25 x 3	Stone	2.59
-	HW050-FU	25 x 3	White	2.59



Heat weldable push-in clip for PVC roofing

Part No.	Conductor Size (mm)	Colour Range	Price Each £
For use with bare solid circular conductor			
HW887	Ø8	Brown	2.84
HW872	Ø8	Grey	2.84
For use with PVC covered solid circular conductor			
HW886	Ø10*	Brown	2.84
HW871	Ø10*	Grey	2.84

*PVC covered Ø8mm conductor

Lightning protection Conductor network

2



CW905 / CW999 / CA900



DT100

Clip accessories

Part No.	Description	Price Each £
CW905	Universal welding solvent (500 ml spray applicator)	31.32
CW999	Cleaning solution (Acetone) (500 ml spray applicator)	15.35
CA900	Surface primer (250 ml spray applicator)	40.63
DT100	Dressing tool for use with DC tape clips	36.27



Bitumen felt roof clip

Part No.	Conductor Size (mm)	Colour Range	Price Each £
For use with bare tape			
FP015	25 x 3	Brown	4.16
FP020	25 x 3	Grey	4.16
For use with PVC covered tape			
FP025	25 x 3	Brown	4.16
FP030	25 x 3	Black	4.16
FP035	25 x 3	Green	4.16
FP040	25 x 3	Grey	4.16
FP045	25 x 3	Stone	4.16
FP050	25 x 3	White	4.16



Standing seam roof fixing with non-metallic DC tape clip

Part No.	Conductor Size (mm)	Conductor Material	Colour Range	Price Each £
For use with bare tape				
SC015	25 x 3	Copper	-	4.75
SC020	25 x 3	Aluminium	-	4.75
For use with PVC covered tape				
SC025	25 x 3	Copper/Aluminium	Brown	4.75
SC030	25 x 3	Copper/Aluminium	Black	4.75
SC035	25 x 3	Copper/Aluminium	Green	4.75
SC040	25 x 3	Copper/Aluminium	Grey	4.75
SC045	25 x 3	Copper/Aluminium	Stone	4.75
SC050	25 x 3	Copper/Aluminium	White	4.75



Standing seam roof fixing with square tape clamp

Part No.	Conductor Size (mm)	Conductor Material	Price Each £
SC105-H	25 x 3	Copper	9.35
SC005-H	25 x 3	Aluminium	6.42



Glazing bar holdfast

Part No.	Maximum Glazing Bar Width (mm)	Conductor Material	Price Each £
HF705	12	Copper	11.10
HF710	12	Aluminium	9.54

Lightning protection Conductor network



Back plate holdfast stem

Part No.	Conductor Material	Price Each £
HF320	Copper	10.81
HF325-FU	Aluminium	8.19



Pyramid holdfast

Part No.	Conductor Size (mm)	Price Each £
HF975	Ø8	3.92



Slate holdfast with non-metallic DC tape clip

Part No.	Conductor Size (mm)	Clip Colour Range	Price Each £
For use with bare tape			
HF015	25 x 3	Brown	2.03
HF020	25 x 3	Grey	2.03
For use with PVC covered tape			
HF025	25 x 3	Brown	2.03
HF030	25 x 3	Black	2.03
HF040	25 x 3	Grey	2.03
HF045	25 x 3	Stone	2.03



Slate holdfast with non-metallic push-in clip

Part No.	Conductor Size (mm)	Clip Colour Range	Price Each £
HF176	Ø8	Brown	2.59
HF191	Ø8	Grey	2.59



Square tape clamp

Part No.	Conductor Size (mm)	Conductor Material	Price Each £
CT105-H	25 x 3	Copper	8.77
CT110-H	25 x 6	Copper	41.51
CT115-H	50 x 6	Copper	44.85
CT005-H	25 x 3	Aluminium	5.04
CT010-H	25 x 6	Aluminium	15.12



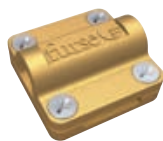
Crossover clamp

Part No.	Conductor Size (mm)	Conductor Material	Price Each £
CX105-H	25 x 3	Copper	7.03
CX005-H	25 x 3	Aluminium	3.54

Lightning protection

Conductor network

2



Cable to tape square clamp

Part No.	Conductor Size	Conductor Material	Price Each £
CT125	25 x 3 mm to 50 mm ²	Copper	14.69
CT130	25 x 3 mm to 70 mm ²	Copper	14.69
CT135	25 x 3 mm to 95 mm ²	Copper	14.69



Cable to cable square clamp

Part No.	Conductor Size (mm ²)	Conductor Material	Price Each £
CR810	50	Copper	14.69
CR815	70	Copper	14.69
CR820	95	Copper	22.72



Square clamp

Part No.	Conductor Size (mm)	Conductor Material	Price Each £
CS605	Ø8	Copper	9.37
CS610	Ø8	Aluminium	6.58



Tee clamp

Part No.	Conductor Size (mm)	Conductor Material	Price Each £
CS505	Ø8	Copper	8.70
CS510	Ø8	Aluminium	5.96



Jointing clamp

Part No.	Conductor Size (mm)	Conductor Material	Price Each £
CS405	Ø8	Copper	11.51
CS410	Ø8	Aluminium	8.82



Test/Junction clamp

Part No.	Conductor Size (mm)	Conductor Material	Price Each £
CN105-H	26 x 8	Copper	13.06
CN005*	26 x 8	Aluminium	10.66

*Not as illustrated



Plate type test clamp

Part No.	Conductor Size (mm)	Conductor Material	Price Each £
CT405	26 x 12	Copper	39.74

Lightning protection Conductor network



Screwdown test clamp

Part No.	Conductor Size (mm)	Conductor Material	Price Each £
CT305	26 x 8	Copper	35.71



Test clamp

Part No.	Conductor Size (mm)	Conductor Material	Price Each £
CN305	Ø8	Copper	11.10
CN310	Ø8	Aluminium	8.29



Test clamp

Part No.	Conductor Size (mm ²)	Conductor Material	Price Each £
CR855	Ø50	Copper	30.52
CR860	Ø75	Copper	30.52
CR865	Ø95	Copper	30.52



Bimetallic connector

Part No.	Conductor Size	Price Each £
CN910	25 x 3 mm aluminium tape to 25 x 3 mm copper tape	47.80
CN910-UL	1.5" x 0.125" aluminium tape to 1" x 0.125" copper tape	47.80
CN915	Ø8 Diameter aluminium conductor to Ø8 Diameter copper conductor	49.67
CN920	Ø8 Diameter aluminium conductor to 25 x 3 mm copper tape	49.67
CN925	25 x 3 mm aluminium tape to 25 x 3 mm copper tape	49.67



Oxide inhibiting compound

Part No.	Description	Price Each £
CM005	Plastic 8 oz bottle	23.29

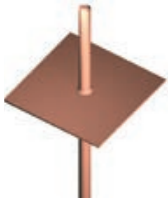


Expansion braid bond

Part No.	Type	Material	Price Each £
BN001	Single length	Aluminium	17.72
BN101	Single length	Copper	20.29
BN002	Cross-over	Aluminium	49.71
BN102	Cross-over	Copper	45.56

Lightning protection Conductor network

2



Puddle flange

Part No.	Conductor Material	Price Each £
PF105	Copper	105.43
PF005	Aluminium	53.38

Accessories



Countersunk wood screws

Part No.	Size	Material	Price Each £
SW105	1.5" x No.10	Zinc plated steel	0.08
SW110	1.5" x No.12	Zinc plated steel	0.19
SW005	1.5" x No.10	Brass	0.23
SW010	1.5" x No.12	Brass	0.41



Roundhead wood screws

Part No.	Size	Material	Price Each £
SW405	1.5" x No.10	Zinc plated steel	0.08
SW305	1.5" x No.10	Brass	0.29



Plastic wall plugs

Part No.	Size	Colour	Price Each £
PS305	No.10	Red	0.02
PS310	No.12	Brown	0.02



Countersunk set screws

Part No.	Size (mm)	Material	Price Each £
SS160	M6 x 30	Brass	0.64



Hexagon head set screws

Part No.	Size (mm)	Material	Price Each £
SS635	M10 x 25	Phosphor bronze	2.65
SS640	M10 x 35	Phosphor bronze	2.84
SS650	M12 x 25	Phosphor bronze	6.00
SS655	M12 x 35	Phosphor bronze	6.80
SS165	M8 x 16	Brass	0.61
SS140	M10 x 25	Brass	0.92
SS145	M10 x 35	Brass	1.19
SS150	M12 x 25	Brass	1.88
SS155	M12 x 35	Brass	2.68

Lightning protection Accessories



Hexagon nuts

Part No.	Size	Material	Price Each £
NU367	M10	Phosphor bronze	1.29
NU370	M12	Phosphor bronze	2.39
NU165	M6	Brass	0.07
NU166	M8	Brass	0.33
NU167	M10	Brass	0.41
NU170	M12	Brass	0.50



Roundhead rivets

Part No.	Size (mm)	Material	Price Each £
RV005	5 x 12	Aluminium	0.69
RV010	5 x 20	Aluminium	0.69
RV105	5 x 12	Copper	0.39
RV110	5 x 20	Copper	0.49



Masonry drills

Part No.	Size	Price Each £
DL005	No.10	6.34
DL010	No.12	7.36



Plain washers

Part No.	Size (mm)	Material	Price Each £
WR365	6	Phosphor bronze	0.28
WR367	10	Phosphor bronze	0.57
WR370	12	Phosphor bronze	0.57
WR165	6	Brass	0.28
WR175	8	Brass	0.28
WR167	10	Brass	0.28
WR170	12	Brass	0.28

Lightning protection Accessories

2



Spring washers

Part No.	Size (mm)	Material	Price Each £
WS365	6	Phosphor bronze	0.57
WS367	10	Phosphor bronze	0.57
WS370	12	Phosphor bronze	0.77



Roundhead copper nails

Part No.	Size (mm)	Material	Price Each £
NA005	50	Copper	0.23



Insulating tape

Part No.	Coil Size	Price Each £
TP120-FU	25 mm x 33 m	9.34



Denso tape

Part No.	Coil Size	Price Each £
TD005	50 mm x 10 m	10.47



Silfos

Part No.	Coil Size	Thickness (mm)	Price Each £
FS005	50 mm x 8 m	0.12	378.30



Tinmans solder

Part No.	Material	Price Each £
SA105	60% tin, 40% lead	47.32



Flux

Part No.	Material	Price Each £
SA115	Flux	12.74

Lightning protection Accessories



StrikeRisk risk assessment software v6.0

Part No.	Description	Workstation Licence	Network Licence	Price Each £
SR600	Single user copy	✓	–	376.72
SR602	Dual user copy	–	✓	602.75
SR610	10 user copy	–	✓	2637.04
SR699	Fixed user copy	–	✓	POA
Upgrade prices (from v.5)				
SR600UG	Single user upgrade			113.02
SR602UG	Dual user upgrade			180.83
SR610UG	10 user upgrade			395.56

Upgrade pricing availability dependent on confirmation of existing StrikeRisk Version 5 licence number.

Earthing

Earth electrodes



Threaded copperbond earth rod

Part No.	Nominal Diameter(“)	Length (mm)	Price Each £
RB105	1/2	1200	13.45
RB110	1/2	1500	16.65
RB115	1/2	1800	19.73
RB125	1/2	2400	26.37
RB125-UL	1/2	2400	26.37
RB205-FU	5/8	1200	14.83
RB210	5/8	1500	18.07
RB215	5/8	1800	21.78
RB220-FU	5/8	2100	25.78
RB225	5/8	2400	29.20
RB225-UL	5/8	2400	29.20
RB235	5/8	3000	36.25
RB235-UL	5/8	3000	36.25
RB305	3/4	1200	19.03
RB310	3/4	1500	23.56
RB315	3/4	1800	28.13
RB320-FU	3/4	2100	33.70
RB325	3/4	2400	37.45
RB325-UL	3/4	2400	37.45
RB335	3/4	3000	46.74
RB335-UL	3/4	3000	46.74

Fittings

Part No.	Type (”)	Price Each £
CG170	1/2 Coupling	6.85
CG270	5/8 Coupling	6.33
CG370	3/4 Coupling	9.33
ST100	1/2 Driving stud	3.78
ST200	5/8 Driving stud	1.38
ST300	3/4 Driving stud	2.93

Earthing

Earth electrodes



Unthreaded copperbond earth rod

Part No.	Diameter (mm)	Length (mm)	Price Each £
RB005	9.0	1200	9.88
RB103	12.7	1200	13.24
RB107	12.7	1500	16.45
RB116	12.7	1800	19.46
RB126	12.7	2400	26.00
RB203	14.2	1200	14.62
RB213	14.2	1500	17.85
RB216	14.2	1800	21.52
RB217	14.2	2000	22.17
RB223	14.2	2100	25.10
RB226	14.2	2400	28.84
RB236	14.2	3000	35.78
RB306	17.2	1200	18.77
RB313	17.2	1500	23.26
RB316	17.2	1800	27.82
RB317	17.2	2000	27.82
RB323	17.2	2100	32.43
RB326	17.2	2400	36.97
RB336	17.2	3000	46.14

Fittings

Part No.	Type	Price Each £
CG177	12.7 mm Coupling	6.85
CG277	14.2 mm Coupling	6.33
CG377	17.2 mm Coupling	9.33
ST107	12.7 mm Driving head	3.78
ST207	14.2 mm Driving head	9.98
ST307	17.2 mm Driving head	13.18

Earthing Earth electrodes



Solid copper and stainless steel earth rod

Part No.	Diameter (mm)	Length (mm)	Copper LME Base Rate Price Per Metre £					
			4501-4600	4601-4700	4701-4800	4801-4900	4901-5000	5001-5100
Solid copper rod								
RC010	15	1200	38.70	39.38	40.06	40.74	41.41	42.09
RC011	15	1500	48.33	49.18	50.04	50.89	51.74	52.60
RC012	15	3000	96.66	98.37	100.08	101.78	103.49	105.20
RC015	20	1200	74.45	75.83	77.22	78.60	79.97	81.35
RC016	20	1500	93.06	94.78	96.51	98.24	99.96	101.69
RC017	20	3000	186.05	189.50	192.96	196.41	199.88	203.33
Stainless steel rod								
RS005	16	1200						55.36
RS011	16	1500						69.20
RS012	16	3000						138.40
RS016	20	1500						101.72
RS017	20	3000						203.45

Fittings

Part No.	Type	Price Each £
ST010	15 mm hardened steel driving stud for copper/stainless steel rod	2.61
ST015	20 mm hardened steel driving stud for copper/stainless steel rod	2.94
CG013	Coupling dowel for 15 mm & 20 mm copper rod	1.51
CG005	Coupling dowel for 16 mm & 20 mm stainless steel rod	1.70
SP010	15 mm hardened steel spike for copper/stainless steel rod	2.99
SP015	20 mm hardened steel spike for copper/stainless steel rod	3.46

Kits

Part No.	Diameter (mm)	Length (mm)	Price Each £
Solid copper rod kits			
RC010-KIT	15	8 ft (2440 mm)	POA
RC015-KIT	20	8 ft (2440 mm)	POA
Stainless steel rod kit			
RS005-KIT	16	8 ft (2440 mm)	POA

Earthing

Earth electrodes



Earth rod seal

Part No.	Description	Price Each £
Earth rod seal assembly		
ES300	Earth rod seal and membrane seal	205.23
Earth rod seal pack		
ES300-12	Seal pack for 12.7 mm Ø 1/2" UNC copperbond rod	37.13
ES300-58	Seal pack for 14.2 mm Ø 5/8" UNC copperbond rod	37.13
ES300-34	Seal pack for 17.2 mm Ø 3/4" UNC copperbond rod	37.13
ES300-15	Seal pack for 15 mm Ø solid copper rod	37.13
ES300-16	Seal pack for 16 mm Ø stainless steel rod	37.13
ES300-20	Seal pack for 20 mm Ø solid copper rod	37.13
Earth rod seal tube		
ES310-03	Seal tube, 300 mm length	31.45
ES310-05	Seal tube, 500 mm length	40.39
ES310-10	Seal tube, 1,000 mm length	64.16
ES310-15	Seal tube, 1,500 mm length	97.03
ES310-20	Seal tube, 2,000 mm length	135.89
ES310-30	Seal tube, 3,000 mm length	192.48
Accessory spanner set		
ES320	Membrane seal torque spanner set	73.91

Earth rod hammer

Part No.	Description	Price Each £
HM005	Atlas Copco Cobra TT petrol driven hammer	POA
HM010	Earth rod adapter (Suitable for 5/8" earth rods)	POA



Hammer rig

Part No.	Description	Price Each £
HM105	Hammer rig	POA



Lightweight inspection pit

Part No.	Description	Price Each £
PT205	Grey polymer lid	43.75
PT309-FU	Black (unbranded) polymer lid	43.75
PT110	Concrete lid	44.42
PT004	5 hole earth bar	36.36
Accessories for polymer lid		
AK005	6 Allen key	1.17
Accessories for concrete lid		
JH100	M8 x 100 mm lg mild steel 'J' bolt lifting hook	1.58
AS100	M8 x 60 mm stainless steel Allen caphead screw (2 per lid)	0.89

Earthing

Earth electrodes



Concrete inspection pit

Part No.	Description	Price Each £
PT005	Concrete inspection pit	44.76
Accessories		
PT006	5 hole earth bar	43.39
PT007	7 hole earth bar	67.53

3



Earth plate (solid copper)

Part No.	Size (mm)	Copper LME Base Rate Price Per Metre £					
		4501-4600	4601-4700	4701-4800	4801-4900	4901-5000	5001-5100
PE005	600 x 600 x 1.5	104.28	105.48	106.68	107.88	109.09	110.29
PE015	900 x 900 x 1.5	197.88	200.29	202.71	205.14	207.56	209.99
PE010	600 x 600 x 3	221.90	224.62	227.33	230.05	232.77	235.49
PE020	900 x 900 x 3	430.43	435.68	440.93	446.20	451.45	456.71



Earth mat (lattice copper)

Part No.	Size (mm)	Copper LME Base Rate Price Per Metre £					
		4501-4600	4601-4700	4701-4800	4801-4900	4901-5000	5001-5100
PE110	600 x 600 x 3	113.24	114.85	116.45	118.06	119.65	121.26
PE120	900 x 900 x 3	203.20	206.07	208.93	211.80	214.66	217.53



FurseCEM® conductive aggregate

Part No.	Description	Sack Weight (kg)	Price Each £
CM025	FurseCEM®	25	90.06
CM030	FurseCEM® (supplied with cement)	25	90.06



Bentonite moisture retaining clay

Part No.	Description	Sack Weight (kg)	Price Each £
CM015	Bentonite powder	25	22.79
CM020	Bentonite granules	25	22.79



Earth resistance test equipment

Part No.	Description	Price Each £
DET14C	Clamp-on earth resistance tester	POA
DET3TC	Digital earth resistance tester	POA
DET4TD2	Digital earth resistance tester	POA
DET2/2	Digital earth resistance tester	POA

Earthing

Earth bonds & clamps



Rod to tape clamp (type A)

Part No.	Nominal Rod Diameter (")	(mm)	Maximum Conductor (mm)	Price Each £
CR105*	1/2	12.7	26 x 12	7.71
CR105*	5/8	16	26 x 12	7.71
CR105*	3/4	20	26 x 10	7.71
CR108	5/8	16	30 x 2	11.52
CR108	3/4	20	30 x 2	11.52
CR110	5/8	16	40 x 12	17.84
CR115	5/8	16	51 x 8	24.32
CR125	3/4	20	51 x 12	25.56
CR130	1/2	12.7	26 x 20	19.10
CR130	5/8	16	26 x 18	19.10
CR130	3/4	20	26 x 10	19.10
CR130	1	25	26 x 10	19.10

*Suitable for use with Ø8 mm solid circular copper conductor



Rod to cable clamp (type G)

Part No.	Nominal Rod Diameter (")	(mm)	Maximum Conductor (mm ²)	Price Each £
CR505	3/8	9.5	6-35	3.28
CR510-FU*	1/2	12.5	16-50	4.00
G5	5/8	16	5.2-33.6	3.66
CR515*	5/8	16	16-70	3.45
G6	3/4	20	5.2-33.6	4.06
CR520*	3/4	20	35-95	3.86
CR525	1	25	70-120	11.98

*Suitable for use with Ø8 mm solid circular copper conductor



'U' bolt rod clamp (type E)

Part No.	Nominal Rod / Rebar Diameter (")	(mm)	Hole Centre (mm)	Price Each £
CR305	5/8	16	37	9.96
CR310	3/4	20	37	11.28
CR315	1	25	37	13.83
CR320*	5/8	16	37	14.20
CR325	1 1/2	38	54	17.12
CR330	2	50	64	21.33

*Includes additional plate to allow tape to be clamped without drilling



'U' bolt rod clamp (type GUV)

Part No.	Nominal Rod / Rebar Diameter (")	(mm)	Conductor Range (mm ²)	Price Each £
CR700*	5/8	16	16-95	17.15
CR700*	3/4	20	16-70	17.15
CR705	5/8	16	70-185	17.15
CR705	3/4	20	70-150	17.15
CR730	5/8	16	150-300	21.24
CR730	3/4	20	150-300	21.24
CR710	1	25	16-70	19.56
CR740	1	25	70-150	19.56
CR750	1	25	150-300	25.23

*Suitable for use with Ø8 mm solid circular copper conductor

Earthing

Earth bonds & clamps



Rod to cable lug clamp (type B)

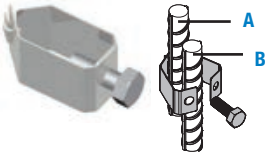
Part No.	Nominal Rod Diameter (")	(mm)	Rod Type	Price Each £
CR205	5/8	9.5	Copperbond	5.90
CR215	5/8	16	Copperbond	35.69
CR220	5/8	15	Solid copper	36.20
CR225	3/4	20	Copperbond	35.69
CR230	3/4	20	Solid copper	36.20

3



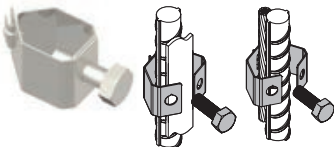
Rebar clamp

Part No.	Conductor Diameter (mm)	Rebar Diameter (mm)	Conductor Material	Price Each £
BN150	8	8-18	Copper	22.44
BN155	8	18-38	Copper	68.56



Rebar to rebar connecting clip

Part No.	Maximum Rebar Diameter (A) (mm)	Maximum Rebar Diameter (B) (mm)	Price Each £
RR812	8	12	4.90
RR1616	16	16	5.22
RR2121	20	20	5.50
RR2626	25	25	5.83
RR3232	32	32	6.30
RR3838	40	40	6.85



Rebar to conductor connecting clip

Part No.	Rebar Diameter (mm)	Conductor Size	Price Each £
Rebar to flat tape			
RC25-087095	25	25 x 3 mm	6.43
Rebar to stranded/solid circular conductor			
RC812-0850	12	50 mm ² or 8 dia.	5.26
RC16-087095	16	8 mm dia., 50-70-95 mm ²	5.60
RC20-087095	20	8 mm dia., 50-70-95 mm ²	5.73
RC25-087095	25	8 mm dia., 50-70-95 mm ²	6.43
RC32-087095	32	8 mm dia., 50-70-95 mm ²	6.57
RC40-087095	40	8 mm dia., 50-70-95 mm ²	7.27



Single hole earth point

Part No.	Hole Size (mm)	Length (mm)	Price Each £
PC100-FU	M8 x 15	80	13.27
PC101	M10 x 15	80	13.27
PC102	M12 x 15	80	13.27
PC103	M16 x 15	80	13.27

Single hole earth point with single pre-welded tail

Part No.	Description	Price Each £
PC105	PC100-FU earth point with pre-welded 500 mm earth cable	28.56
PC106	PC101 earth point with pre-welded 500 mm earth cable	28.56
PC107	PC102 earth point with pre-welded 500 mm earth cable	28.56
PC108	PC103 earth point with pre-welded 500 mm earth cable	28.56

Earthing

Earth bonds & clamps



Two hole earth point

Part No.	Hole Size (mm)	Length (mm)	Price Each £
PC115-FU	M8 x 12	80	32.58
PC120	M8 x 12	80	32.58
PC125	M8 x 12	80	29.03

Two hole earth point with single pre-welded tail

PC116	PC115-FU earth point with pre-welded 500 mm earth cable	54.82
PC121	PC120 earth point with pre-welded 500 mm earth cable	54.82
PC126-FU	PC125 earth point with pre-welded 500 mm earth cable	54.82

Two hole earth point with double pre-welded tail

PC216	PC115-FU earth point with pre-welded 2 x 500 mm earth cable	61.16
PC221	PC120 earth point with pre-welded 2 x 500 mm earth cable	62.56



Four hole earth point

Part No.	Hole Size (mm)	Length (mm)	Price Each £
PC110	M8 x 14	75	43.08

Four hole earth point with single pre-welded tail

PC111	PC110 earth point with pre-welded 500 mm earth cable	63.70
-------	--	-------

Four hole earth point with double pre-welded tail

PC211	PC110 earth point with pre-welded 2 x 500 mm earth cable	62.56
-------	--	-------



Type H High strength splitbolt connector

Part No.	Conductor range					Price Each £
	Main Min (mm ²)	Max (mm ²)	Tap Min (mm ²)	Max (mm ²)	Dim B (mm)	
8H-FU	4	10	2.5	10	4.1	6.71
4H-FU	10	16	2.5	16	5.5	5.95
2H-FU	16	25	4	25	6.9	8.19
1H-FU	25	35	4	35	8.4	8.60
10H-FU	35	50	4	50	9.7	11.70
20H-FU	35	70	4	70	11.2	18.91
30H-FU	50	95	4	95	13.6	23.59
40H-FU	50	120	6	120	14.7	28.65
350M-FU	95	185	6	185	18.2	55.28

Earthing

Earth bonds & clamps



Earth boss

Part No.	Length (mm)	Diameter (mm)	Thread Size (mm)	Price Each £
EB0000	25	25	M8	11.74
EB1000	25	25	M8	14.52
EB0110	30	30	M8	12.54
EB1110	30	30	M8	15.79
EB0111	30	30	M10	11.89
EB1111	30	30	M10	12.65
EB0120	30	40	M8	13.07
EB1120	30	40	M8	17.70
EB0121	30	40	M10	12.09
EB1121	30	40	M10	14.37
EB0130	30	50	M8	14.02
EB1130	30	50	M8	18.63
EB0131	30	50	M10	12.50
EB1131	30	50	M10	17.89
EB0211	40	30	M10	12.09
EB1211	40	30	M10	13.54
EB0212	40	30	M12	15.33
EB1212	40	30	M12	18.71
EB0221	40	40	M10	12.50
EB1221	40	40	M10	15.66
EB0222	40	40	M12	15.99
EB1222	40	40	M12	20.91
EB0231	40	50	M10	12.90
EB1231	40	50	M10	19.69
EB0232	40	50	M12	17.08
EB1232	40	50	M12	24.89
EB0311	50	30	M10	12.50
EB1311	50	30	M10	15.15
EB0312	50	30	M12	15.08
EB1312	50	30	M12	18.71
EB0321	50	40	M10	12.90
EB1321	50	40	M10	16.78
EB0322	50	40	M12	16.37
EB1322	50	40	M12	22.02
EB001	50	50	M10	13.86
EB1331	50	50	M10	13.97
EB0332	50	50	M12	17.16
EB1332	50	50	M12	26.00



Tower earth clamp

Part No.	Conductor Range (mm ²)	Conductor Material	Price Each £
BN125*	16-70	Copper	17.20
BN130	70-120	Copper	20.47
BN300-FU*	25-50	Copper	10.83
BN305*	25-50	Aluminium	10.83
BN320	120-185	Copper	26.34
BN325	185-240	Copper	27.34

*Suitable for use with Ø8 mm solid circular conductor

Earthing

Earth bonds & clamps



B bond

Part No.	Maximum Tape Width (mm)	Conductor Material	Price Each £
BN105	26	Copper	4.17
BN005	26	Aluminium	3.95
BN113	31	Copper	7.28



Metalwork bond

Part No.	Conductor Diameter (mm)	Conductor Material	Price Each £
CS350	8	Copper	20.94
CS355	8	Aluminium	14.77



Straight setscrew cable socket

Part No.	Conductor Diameter (mm)	Palm hole Diameter (mm)	Conductor Material	Price Each £
SX450	8	12	Copper	10.57
SX455	8	12	Aluminium	8.54



RWP bond

Part No.	Maximum Tape Width (mm)	Conductor Material	Price Each £
BN115	26	Copper	8.08
BN010	26	Aluminium	7.16



Watermain bond

Part No.	Maximum Tape Width (mm)	Conductor Material	Price Each £
BN120	26	Copper	12.58



Pipe bond

Part No.	Conductor Diameter (mm)	Pipe Diameter (mm)	Conductor Material	Price Each £
BN175	8	50-200	Copper	42.76
BN176	8	50-200	Aluminium	29.28



Pipe clamp

Part No.	Pipe Diameter (")	Pipe Diameter (mm)	Price Each £
3902	1/2 - 1	13-25	12.19
3903	1 1/4 - 2	32-50	26.75
3904	2 1/2 - 3 1/2	65-90	19.32
3905-TB	4 - 5	100-125	22.75
3906-TB	6	150	27.36
3907	8	200	41.96
3908	10	250	51.41
3909-TB	12	300	61.61

Earthing

Earth bonds & clamps



Flexible flat copper braid bond

Part No.	Overall Braid Dimensions (mm)	Hole Diameter (mm)	Length	Price Each £
Copper braid				
FBB-6-200-7	12 x 1	7	200	POA
FBB-6-400-7	12 x 1	7	400	POA
FBB-10-200-7	15 x 1.5	7	200	POA
FBB-10-400-7	15 x 1.5	7	400	POA
FBB-16-200-9	19 x 2.5	9	200	POA
FBB-16-400-9	19 x 2.5	9	400	POA
FBB-25-200-11	25 x 3	11	200	POA
FBB-25-400-11	25 x 3	11	400	POA
BN505	25 x 3.5	11	200	15.07
BN510	25 x 3.5	11	400	23.09
FBB-50-200-11	30 x 5	11	200	POA
FBB-50-400-11	30 x 5	11	400	POA
FBB-70-200-13	32 x 6	13	200	POA
FBB-70-400-13	32 x 6	13	400	POA
FBB-95-200-13	37 x 6	13	200	POA
FBB-95-400-13	37 x 6	13	400	POA
FBB-120-200-17	45 x 6	17	200	POA
FBB-120-400-17	45 x 6	17	400	POA
FBB-150-200-17	50 x 8	17	200	POA
FBB-150-400-17	50 x 8	17	400	POA
Tinned copper braid				
FBB-6-200-7-T	12 x 1	7	200	POA
FBB-6-400-7-T	12 x 1	7	400	POA
FBB-10-200-7-T	15 x 1.5	7	200	POA
FBB-10-400-7-T	15 x 1.5	7	400	POA
FBB-16-200-9-T	19 x 2.5	9	200	POA
FBB-16-400-9-T	19 x 2.5	9	400	POA
FBB-25-200-11-T	25 x 3	11	200	POA
FBB-25-400-11-T	25 x 3	11	400	POA
BN505-T	25 x 3.5	11	200	POA
BN510-T	25 x 3.5	11	400	POA
FBB-50-200-11-T	30 x 5	11	200	POA
FBB-50-400-11-T	30 x 5	11	400	POA
FBB-70-200-13-T	32 x 6	13	200	POA
FBB-70-400-13-T	32 x 6	13	400	POA
FBB-95-200-13-T	37 x 6	13	200	POA
FBB-95-400-13-T	37 x 6	13	400	POA
FBB-120-200-17-T	45 x 6	17	200	POA
FBB-120-400-17-T	45 x 6	17	400	POA
FBB-150-200-17-T	50 x 8	17	200	POA
FBB-150-400-17-T	50 x 8	17	400	POA

* Other sizes available on request

Earthing

Earth bonds & clamps



Flexible circular copper braid bond

Part No.	Overall Braid Dimensions (mm)	Hole Diameter (mm)	Length (mm)	Price Each £
Copper braid				
CBB-6-200-7	4.2	7	200	POA
CBB-6-400-7	4.2	7	400	POA
CBB-10-200-7	5.4	7	200	POA
CBB-10-400-7	5.4	7	400	POA
CBB-16-200-9	7	9	200	POA
CBB-16-400-9	7	9	400	POA
CBB-25-200-11	8.5	11	200	POA
CBB-25-400-11	8.5	11	400	POA
CBB-50-200-11	11.5	11	200	POA
CBB-50-400-11	11.5	11	400	POA
CBB-70-200-13	14.5	13	200	POA
CBB-70-400-13	14.5	13	400	POA
CBB-95-200-13	16	13	200	POA
CBB-95-400-13	16	13	400	POA
Tinned copper braid				
CBB-6-200-7-T	4.2	7	200	POA
CBB-6-400-7-T	4.2	7	400	POA
CBB-10-200-7-T	5.4	7	200	POA
CBB-10-400-7-T	5.4	7	400	POA
CBB-16-200-9-T	7	9	200	POA
CBB-16-400-9-T	7	9	400	POA
CBB-25-200-11-T	8.5	11	200	POA
CBB-25-400-11-T	8.5	11	400	POA
CBB-50-200-11-T	11.5	11	200	POA
CBB-50-400-11-T	11.5	11	400	POA
CBB-70-200-13-T	14.5	13	200	POA
CBB-70-400-13-T	14.5	13	400	POA
CBB-95-200-13-T	16	13	200	POA
CBB-95-400-13-T	16	13	400	POA



Eyebolt

Part No.	Nominal Copperbond Rod Diameter (")	Price Each £
BT150	5/8	37.47
BT160	3/4	43.88



Static earth receptacle

Part No.	Conductor Material	Price Each £
RX005	Copper	152.65

Earthing

Earth bonds & clamps



Stainless steel earthing clamp

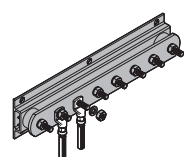
Part No.	Description	Jaw Opening (mm)	Price Each £
SK010	3 m medium duty earthing clamp	15	177.79
SK020	5 m heavy duty earth clamp	35	253.99



Stainless steel earthing clamp & reel

Part No.	Description	Jaw Opening (mm)	Price Each £
SK030	6.1 m medium duty earthing clamp & reel	15	438.35
SK040	15.2 m heavy duty earth clamp & reel	35	738.52

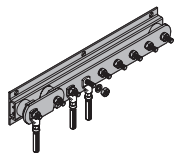
Earth bars



Earth Bar

Part No.	Description	Length (mm)	Price Each £
Copper earth bar			
LK245-6	6 way	400	158.11
LK245-8	8 way	500	175.07
LK245-10	10 way	650	194.50
LK245-12	12 way	750	214.65
LK245-14	14 way	850	236.60
LK245-16	16 way	950	260.53
LK245-18	18 way	1050	286.68
LK245-20	20 way	1200	316.21
LK245-22	22 way	1300	347.45
LK245-24	24 way	1400	381.61
LK245-26	26 way	1500	419.02
LK245-28	28 way	1650	462.06
LK245-30	30 way	1750	505.75
Tinned copper earth bar			
LK245-6-T	6 way	400	173.92
LK245-8-T	8 way	500	192.57
LK245-10-T	10 way	650	213.95
LK245-12-T	12 way	750	236.12
LK245-14-T	14 way	850	260.26
LK245-16-T	16 way	950	286.58
LK245-18-T	18 way	1050	315.36
LK245-20-T	20 way	1200	347.83
LK245-22-T	22 way	1300	382.20
LK245-24-T	24 way	1400	419.77
LK245-26-T	26 way	1500	460.92
LK245-28-T	28 way	1650	508.26
LK245-30-T	30 way	1750	556.33

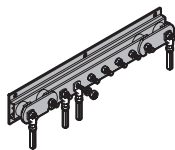
Earthing Earth bars



Earth bars with single disconnecting link

Part No.	Description	Length (mm)	Price Each £
Copper earth bar			
LK243-6	6 way	475	178.10
LK243-8	8 way	575	196.92
LK243-10	10 way	725	218.38
LK243-12	12 way	825	240.75
LK243-14	14 way	925	265.17
LK243-16	16 way	1025	291.83
LK243-18	18 way	1125	320.93
LK243-20	20 way	1275	353.76
LK243-22	22 way	1375	388.60
LK243-24	24 way	1475	426.74
LK243-26	26 way	1575	468.52
LK243-28	28 way	1725	515.21
LK243-30	30 way	1825	565.34
Tinned copper earth bar			
LK243-6-T	6 way	475	195.92
LK243-8-T	8 way	575	216.61
LK243-10-T	10 way	725	240.21
LK243-12-T	12 way	825	264.83
LK243-14-T	14 way	925	291.68
LK243-16-T	16 way	1025	321.01
LK243-18-T	18 way	1125	353.03
LK243-20-T	20 way	1275	389.14
LK243-22-T	22 way	1375	427.46
LK243-24-T	24 way	1475	469.41
LK243-26-T	26 way	1575	515.37
LK243-28-T	28 way	1725	566.73
LK243-30-T	30 way	1825	621.87

Earthing Earth bars



Earth bars with twin disconnecting link

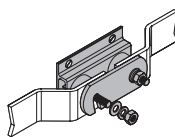
Part No.	Description	Length (mm)	Price Each £
Copper earth bar			
LK207-6	6 way	550	199.31
LK207-8	8 way	650	220.10
LK207-10	10 way	800	243.74
LK207-12	12 way	900	268.50
LK207-14	14 way	1000	295.54
LK207-16	16 way	1100	325.09
LK207-18	18 way	1200	357.42
LK207-20	20 way	1350	393.73
LK207-22	22 way	1450	432.43
LK207-24	24 way	1550	474.80
LK207-26	26 way	1650	521.22
LK207-28	28 way	1800	573.06
LK207-30	30 way	1900	628.82

Tinned copper earth bar

LK207-6-T	6 way	550	219.24
LK207-8-T	8 way	650	242.10
LK207-10-T	10 way	800	268.11
LK207-12-T	12 way	900	295.35
LK207-14-T	14 way	1000	325.10
LK207-16-T	16 way	1100	357.60
LK207-18-T	18 way	1200	393.16
LK207-20-T	20 way	1350	433.10
LK207-22-T	22 way	1450	475.67
LK207-24-T	24 way	1550	522.27
LK207-26-T	26 way	1650	573.34
LK207-28-T	28 way	1800	630.37
LK207-30-T	30 way	1900	691.70

Earth bar accessories

Part No.	Description	Price Each £
For use with copper earth bar		
LK004	Swan-neck link	22.68
LK205	Disconnecting link	48.18
For use with tinned earth bar		
LK004-T	Swan-neck link	23.82
LK205-T	Disconnecting link	50.59



Earthing Earth bars



Insulator

Part No.	Height (mm)	Insert Size	Price Each £
Insulator			
INO20	20	M6	3.86
INO30	30	M6	4.49
INO40	40	M8	6.39
INO13	50	M10	6.41
INO60	60	M10	10.30
INO70	70	M12	15.27
Insulator with 2 studs and 3 nuts			
INO05	50	M10	8.64

Earthing

Compression connectors & tools



Copper "C" Shape connector

Part No.	Conductor Range (Main) (mm ²)	Conductor Range (Tap) (mm ²)	Box Quantity	Price Per Box £
CN1010	10	1.5-10	100	92.76
CN1616	16	1.5-16	100	239.39
CN2510	16-25	1.5-10	50	131.37
CN2525	25	16-25	50	131.92
CN3516	35	1.5-16	25	68.43
CN3535	35	25-35	25	63.29
CN5025	50	4-25	25	126.02
CN5050	50	35-50	25	119.91
CN7025	70	1.5-25	25	58.68
CN7035	50-70	4-35	25	132.70
CN7070	50-70	35-70	25	135.68
CN9535	95	4-35	25	204.73
CN9570	95	35-70	25	196.91
CN9595	95	70-95	25	180.33
CN120120	120	25-120	25	210.78
CN150120	150	25-120	25	210.78
CN150150	150	70-150	25	226.32
CN18595	185	16-95	25	240.49
CN185185	120-185	120-185	15	202.57
CN240120	150-240	95-120	15	146.51
CN240150	240-150	240-150	10	POA
CN240185	240-185	240-185	10	POA
CN240240	240-240	240-240	10	POA
CN300120	300-120	300-120	10	POA
CN300300	300-300	300-300	10	POA

Earthing

Compression connectors & tools



Tinned copper "C" Shape connector

Part No.	Conductor Range (Main) (mm ²)	Conductor Range (Tap) (mm ²)	Box Quantity	Price Per Box £
CN1010-T	10	1.5-10	100	93.27
CN1616-T	16	1.5-16	100	239.90
CN2510-T	16-25	1.5-10	50	131.88
CN2525-T	25	16-25	50	132.43
CN3516-T	35	1.5-16	25	75.28
CN3535-T	35	25-35	25	69.62
CN5025-T	50	4-25	25	138.62
CN5050-T	50	35-50	25	131.90
CN7025-T	70	1.5-25	25	64.56
CN7035-T	50-70	4-35	25	145.97
CN7070-T	50-70	35-70	25	181.76
CN9535-T	95	4-35	25	403.35
CN9570-T	95	35-70	25	216.60
CN9595-T	95	70-95	25	355.41
CN120120-T	120	25-120	25	231.86
CN150120-T	150	25-120	25	231.86
CN150150-T	150	70-150	25	248.96
CN18595-T	185	16-95	25	264.54
CN185185-T	120-185	120-185	15	222.82
CN240120-T	150-240	95-120	15	161.16
CN240150-T	240-150	240-150	10	POA
CN240185-T	240-185	240-185	10	POA
CN240240-T	240-240	240-240	10	POA
CN300120-T	300-120	300-120	10	POA
CN300300-T	300-300	300-300	10	POA

Earthing

Compression connectors & tools



Tinned copper cable lug

Part No.	Conductor Size (mm ²)	Screw Size (mm)	Box Quantity	Price Each £
FCT166	16	6	100	33.22
FCT168	16	8	100	33.22
FCT1610	16	10	100	33.22
FCT1612	16	12	100	33.22
FCT256	25	6	100	44.26
FCT258	25	8	100	44.26
FCT2510	25	10	100	44.26
FCT2512	25	12	100	44.26
FCT356	35	6	100	60.59
FCT358	35	8	100	60.59
FCT3510	35	10	100	60.59
FCT3512	35	12	100	60.59
FCT506	50	6	100	70.89
FCT508	50	8	100	70.89
FCT5010	50	10	100	70.89
FCT5012	50	12	100	70.89
FCT708	70	8	100	125.63
FCT7010	70	10	100	125.63
FCT7012	70	12	100	125.63
FCT7014	70	14	100	125.63
FCT7016	70	16	100	125.63
FCT958	95	8	100	210.15
FCT9510	95	10	100	210.15
FCT9512	95	12	100	210.15
FCT9514	95	14	100	210.15
FCT9516	95	16	100	210.15
FCT12010	120	10	50	149.39
FCT12012	120	12	50	149.39
FCT12014	120	14	50	149.39
FCT12016	120	16	50	149.39
FCT15010	150	10	50	182.61
FCT15012	150	12	50	182.61
FCT15014	150	14	50	182.61
FCT15016	150	16	50	182.61
FCT18512	185	12	50	290.96
FCT18514	185	14	50	290.96
FCT18516	185	16	50	290.96
FCT24012	240	12	50	334.45
FCT24014	240	14	50	334.45
FCT24016	240	16	50	334.45
FCT30012	300	12	25	394.96
FCT30014	300	14	25	394.96
FCT30016	300	16	25	394.96
FCT40012	400	12	25	532.15
FCT40014	400	14	25	532.15
FCT40016	400	16	25	532.15

Earthing

Compression connectors & tools



"C" shape connector die

Part No.	Conductor Range (Main) (mm ²)	Conductor Range (Tap) (mm ²)	Price Each £
HT010 and HT040 tooling			
HD100	10	1.5-10	100.79
HD200	16	1.5-16	100.79
HD200	16-25	1.5-10	100.79
HD200	25	16-25	100.79
HD300	35	1.5-16	100.79
HD300	35	25-35	100.79
HD300	70	1.5-25	100.79
HD400	50	4-25	100.79
HD400	50	35-50	100.79
HD400	50-70	4-35	100.79
HD400	50-70	35-70	100.79
HD500	95	4-35	100.79
HD500	95	35-70	100.79
HD500	95	70-95	100.79
HD600	120	25-120	100.79
HD600	150	25-120	100.79
HD600	150	70-150	100.79
HD600	185	16-95	100.79
HD800	240	95-120	100.79
HT020 and HT030 tooling			
HD700	120-185	120-185	275.99
HD700	150-240	95-120	275.99

3



Hydraulic crimping tool

Part No.	Description	Price Each £
HT010	Hand operated 13 ton tool with carrying case	1545.50



Hydraulic crimping head & pump

Part No.	Description	Price Each £
HT020	15 ton hydraulic tool with carrying case	1019.93
HT030	Foot operated hydraulic pump with carrying case	1627.09



Battery powered hydraulic crimping tool

Part No.	Description	Price Each £
HT040	Battery powered, open head 14 ton tool	4369.08



Battery powered hydraulic cutting tool

Part No.	Description	Price Each £
HT050	Battery powered 6 ton cutting tool	3222.65

FurseWELD exothermic welding

Moulds & mini-moulds, powders, sleeves, & hammer dies

For ease of use FurseWELD moulds and mini-moulds are assigned a price key. The price key is the middle digit of the part number, ie mould CR1-4-12810 has a price key of '4'.



Moulds & mini-moulds

Price Key	Description	Price Each £
1	Standard price for price key - 1 - moulds	75.63
2	Standard price for price key - 2 - moulds	77.80
3	Standard price for price key - 3 - moulds	94.11
4	Standard price for price key - 4 - moulds	140.99
5	Standard price for price key - 5 - moulds	301.15
6	Standard price for price key - 6 - moulds	304.27
7	Standard price for price key - 7 - moulds	307.61
8	Standard price for price key - 8 - moulds	664.69
9	Standard price for price key - 9 - moulds	326.34
10	Standard price for price key - 10 - moulds	718.52



Powders

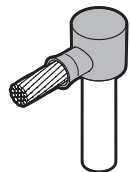
Part No.	Box Quantity	Price Each £
15P10	20	2.51
25P10	20	3.12
32P10	20	3.47
45P10	20	4.32
65P10	10	5.54
90P10	10	7.25
115P10	10	8.94
150P10	10	10.94
200P10	10	14.81
250P10	10	17.77



Sleeves

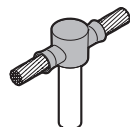
Part No.	Description	Price Each £
S102-FU	Copper sleeve	0.85
S103	Copper sleeve	0.80
S104	Copper sleeve	1.16
S105	Copper sleeve	1.20
S106	Copper sleeve	1.20
S107	Copper sleeve	1.20
S108	Copper sleeve	1.20
S109	Copper sleeve	1.20
S110	Copper sleeve	1.20
S108A	Copper sleeve	1.26
S109A	Copper sleeve	1.29
S110A	Copper sleeve	1.36
S111A	Copper sleeve	1.42

FurseWELD exothermic welding SureSHOT



SS1

Part No.	Price Each £
SS1-14216	11.80
SS1-14225	11.80
SS1-14235	11.80
SS1-14250	11.80
SS1-14270	11.80
SS1-14295	11.80
SS1-17216	11.80
SS1-17225	11.80
SS1-17235	11.80
SS1-17250	11.80
SS1-17270	11.80
SS1-17295	11.80

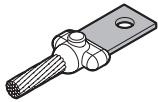


SS2

Part No.	Price Each £
SS2-14216	11.80
SS2-14225	11.80
SS2-14235	11.80
SS2-14250	11.80
SS2-14270	11.80
SS2-14295	11.80
SS2-17216	11.80
SS2-17225	11.80
SS2-17235	11.80
SS2-17250	11.80
SS2-17270	11.80
SS2-17295	11.80

FurseWELD exothermic welding

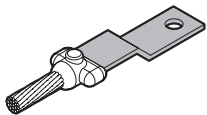
Terminal lugs



Straight type lug

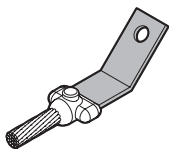
Part No.	Price Each £
LS101-FU	POA
LS102-FU	POA
LS103-FU	POA
LS104-FU	POA
LS105-FU	POA
LS106-FU	POA
LS107-FU	POA
LS108-FU	POA
LS109-FU	POA
LS110-FU	POA

4



Cranked type lug

Part No.	Price Each £
LC101-FU	POA
LC102-FU	POA
LC103-FU	POA
LC104-FU	POA
LC105-FU	POA
LC106-FU	POA
LC107-FU	POA
LC108-FU	POA
LC109-FU	POA
LC110-FU	POA



Offset type lug

Part No.	Price Each £
LO101	POA
LO102-FU	POA
LO103-FU	POA
LO104	POA
LO105	POA
LO106	POA
LO107	POA
LO108	POA
LO109	POA
LO110	POA

FurseWELD exothermic welding

Handle clamps & accessories



Handle clamps

Part No.	Description	Price Each £
HCPK1	Single part moulds	72.33
HCPK2	Single part moulds	67.77
HCPK3	Two part moulds	93.82
HCPK3-A	With chain grip, two part moulds	248.26
HCPK3-B	Sprung, single part moulds	260.68
HCPK4	Two-part moulds	133.80
HCPK4-A	With chain grip, multi-part moulds	135.07
HCPK5	Multi-part moulds	136.36
HCPK7	Multi-part moulds	502.91
HCPK8	Multi-part moulds	548.63
Frames		
F1-FU	Frame for use with Handle Clamp HCPK4	269.37
F2-FU	Frame for use with Handle Clamp HCPK5	456.70

FurseWELD exothermic welding

Accessories



DUXSEAL



B135

BFC

BCM



FGUN

PACK-A



STM1-FU



TB100-FU



MJ5

Accessories

Part No.	Description	Price Each £
B135	Cable cleaning brush	120.09
BCM	Mould cleaning brush	4.33
BFC	Tape cleaning brush	15.88
DUXSEAL	Duxseal sealing compound (1 lb)	36.97
FGUN	Flint gun	18.28
FLINTS	Replacement flints (pack of 100)	4.86
PACK-A	Packing	6.57
STM1-FU	Mould cleaning scraper	13.87
TB100-FU	Welding toolbox	88.13
TK100	Standard toolkit for bar to bar joints-Includes flint gun (FGUN), Tape cleaning brush (BFC), mould cleaning brush and scraper (BCM & STM1-FU)	42.36
TK200	Standard toolkit for cable to cable joints-Includes flint gun (FGUN), cable cleaning brush (B135), mould cleaning brush and scraper (BCM & STM1-FU)	164.95
MJ4	Mould jacket	140.17
MJ5	Mould jacket	244.12

Hammer dies

Part No.	Description (mm ²)	Price Each £
HD35	35	73.61
HD50	50	73.61
HD70	70	73.61
HD95	95	73.61
HD120	120	73.61
HD150	150	73.61

Electronic systems protection

Mains power protection



Mains supplies - equipotential bonding

Part No.	Description	Price Each £
ESP 240/I/TNS	Enhanced single phase protector for Level I/II LPS systems for 240 V TNS/TNCS supplies	621.00
ESP 240/III/TNS	Enhanced single phase protector for Level III/IV LPS systems for 240 V TNS/TNCS supplies	334.00
ESP 240/I/TNC	Enhanced single phase protector for Level I/II LPS systems for 240 V TNC supplies	334.00
ESP 240/III/TNC	Enhanced single phase protector for Level III/IV LPS systems for 240 V TNC supplies	192.00
ESP 240/I/TT	Enhanced single phase protector for Level I/II LPS systems for 240 V TT supplies	666.00
ESP 240/III/TT	Enhanced single phase protector for Level III/IV LPS systems for 240 V TT supplies	422.00
ESP 415/I/TNS	Enhanced three phase protector for Level I/II LPS systems for 415 V TNS/TNCS supplies	621.00
ESP 415/III/TNS	Enhanced three phase protector for Level III/IV LPS systems for 415 V TNS/TNCS supplies	398.00
ESP 415/I/TNC	Enhanced three phase protector for Level I/II LPS systems for 415 V TNC supplies	467.00
ESP 415/III/TNC	Enhanced three phase protector for Level III/IV LPS systems for 415 V TNC supplies	323.00
ESP 415/I/TT	Enhanced three phase protector for Level I/II LPS systems for 415 V TT supplies	728.00
ESP 415/III/TT	Enhanced three phase protector for Level III/IV LPS systems for 415 V TT supplies	483.00



Mains supplies - DIN housing

Part No.	Description	Price Each £
ESP 120 D1	Enhanced protector for single phase supplies of 90-150 volts	327.00
ESP 240 D1	Enhanced protector for single phase supplies of 200-280 volts	311.00
ESP 277 D1	Enhanced protector for single phase supplies of 232-350 volts	339.00
ESP 208 D1	Enhanced protector for three phase supplies of 156-260 volts with LED indication	663.00
ESP 208 D1/LCD	Enhanced protector for three phase supplies of 156-260 volts with intelligent LCD display indication	787.00
ESP 415 D1	Enhanced protector for three phase supplies of 346-484 volts with LED indication	618.00
ESP 415 D1/LCD	Enhanced protector for three phase supplies of 346-484 volts with intelligent LCD display indication	742.00
ESP 480 D1	Enhanced protector for three phase supplies of 402-600 volts with LED indication	673.00
ESP 480 D1/LCD	Enhanced protector for three phase supplies of 402-600 volts with intelligent LCD display indication	799.00

Supplied with remote indication display

ESP 208 D1R	Enhanced protector with remote LED display and 1 m lead, for three phase supplies of 156-260 volts	731.00
ESP 208 D1R/LCD	Enhanced protector with remote intelligent LCD display and 1 m lead, for three phase supplies of 156-260 volts	811.00
ESP 415 D1R	Enhanced protector with remote LED display and 1 m lead, for three phase supplies of 346-484 volts	687.00
ESP 415 D1R/LCD	Enhanced protector with remote intelligent LCD display and 1 m lead, for three phase supplies of 346-484 volts	766.00
ESP 480 D1R	Enhanced protector with remote LED display and 1 m lead, for three phase supplies of 402-600 volts	742.00
ESP 480 D1R/LCD	Enhanced protector with remote intelligent LCD display and 1 m lead, for three phase supplies of 402-600 volts	821.00
ESP RLA HD-1	1 m lead for use with three phase D1/D1R Series	27.50
ESP RLA HD-2	2 m lead for use with three phase D1/D1R Series	31.50
ESP RLA HD-4	4 m lead for use with three phase D1/D1R Series	38.50

NOTE: For ABB order codes please see the relevant Furse part number in the alphanumeric index.

Electronic systems protection

Mains power protection



Mains supplies (extra high maximum surge currents)

Part No.	Description	Price Each £
ESP 415 M2	Enhanced protector with a maximum surge current rating of 80 kA 8/20, for three phase supplies of 346-484 volts	1142.00
ESP 415 M4	Enhanced protector with a maximum surge current rating of 160 kA 8/20, for three phase supplies of 346-484 volts	2184.00
ESP 480 M2	Enhanced protector with a maximum surge current rating of 80 kA 8/20, for three phase supplies of 402-600 volts	1153.00
ESP 480 M4	Enhanced protector with a maximum surge current rating of 160 kA 8/20, for three phase supplies of 402-600 volts	2211.00



Mains supplies & power distribution systems

Part No.	Description	Price Each £
ESP 120 M1	Enhanced protector for single phase supplies of 90-150 volts	310.00
ESP 240 M1	Enhanced protector for single phase supplies of 200-280 volts	295.00
ESP 277 M1	Enhanced protector for single phase supplies of 232-350 volts	316.00
ESP 208 M1	Enhanced protector for three phase supplies of 156-260 volts	600.00
ESP 415 M1	Enhanced protector for three phase supplies of 346-484 volts	588.00
ESP 480 M1	Enhanced protector for three phase supplies of 402-600 volts	627.00



Mains supplies - with remote display indication

Part No.	Description	Price Each £
ESP 415 M1R	Enhanced protector with a maximum surge current rating of 40 kA 8/20, with remote display and 1 m lead, for three phase supplies of 346-484 volts	656.00
ESP 480 M1R	Enhanced protector with maximum surge current rating of 40k A 8/20, with remote display and 1 m lead, for three phase supplies of 402-600 volts	696.00
ESP 415 M2R	Enhanced protector with maximum surge current rating of 80 kA 8/20, with remote display and 1 m lead, for three phase supplies of 346-484 volts	1212.00
ESP 480 M2R	Enhanced protector with maximum surge current rating of 80 kA 8/20, with remote display and 1 m lead, for three phase supplies of 402-600 volts	1217.00
ESP 415 M4R	Enhanced protector with maximum surge current rating of 160 kA 8/20, with remote display and 1 m lead, for three phase supplies of 346-484 volts	2255.00
ESP 480 M4R	Enhanced protector with maximum surge current rating of 160 kA 8/20, with remote display and 1 m lead, for three phase supplies of 402-600 volts	2276.00
ESP RLA-1	Optional 1 m lead for use with M1R, M2R and M4R Series	14.50
ESP RLA-2	Optional 2 m lead for use with M1R, M2R and M4R Series	16.00
ESP RLA-4	Optional 4 m lead for use with M1R, M2R and M4R Series	18.00



DC supplies & power distribution systems

Part No.	Description	Price Each £
ESP 12 DC	Protector for 12 volt DC systems	267.00
ESP 24 DC	Protector for 24 volt DC systems	267.00
ESP 36 DC	Protector for 36 volt DC systems	267.00
ESP 48 DC	Protector for 48 volt DC systems	267.00

NOTE: For ABB order codes please see the relevant Furse part number in the alphanumeric index.

Electronic systems protection

Mains power protection



Mains supplies & fused connections up to 10 amps or up to 32 amps

Part No.	Description	Price Each £
Protectors rated at 10 amps or less		
ESP 120D-10A	- for single phase supplies of 90-150 volts	133.00
ESP 120DS-10A	- with remote contact, for single phase supplies of 90-150 volts	159.00
ESP 240D-10A	- for single phase supplies of 200-280 volts	131.50
ESP 240DS-10A	- with remote contact, for single phase supplies of 200-280 volts	157.50
ESP 277D-10A	- for single phase supplies of 232-350 volts	137.00
ESP 277DS-10A	- with remote contact, for single phase supplies of 232-350 volts	163.00
Protectors rated at 32 amps or less		
ESP 120D-32A	- for single phase supplies of 90-150 volts	149.50
ESP 120DS-32A	- with remote contact, for single phase supplies of 90-150 volts	175.50
ESP 240D-32A	- for single phase supplies of 200-280 volts	147.50
ESP 240DS-32A	- with remote contact, for single phase supplies of 200-280 volts	172.50
ESP 277D-32A	- for single phase supplies of 232-350 volts	153.50
ESP 277DS-32A	- with remote contact, for single phase supplies of 232-350 volts	179.50



Mains supplies & fused connections up to 5 amps or up to 16 amps

Part No.	Description	Price Each £
Protectors rated at 5 amps or less		
ESP 120-5A	- for single phase supplies of 90-150 volts	106.00
ESP 120-5A/BX	- ready boxed for single phase supplies of 90-150 volts	117.50
ESP 240-5A	- for single phase supplies of 200-280 volts	106.00
ESP 240-5A/BX	- ready boxed for single phase supplies of 200-280 volts	117.50
ESP 277-5A	- for single phase supplies of 232-350 volts	112.50
ESP 277-5A/BX	- ready boxed for single phase supplies of 232-350 volts	124.00
Protectors rated at 16 amps or less		
ESP 120-16A	- for single phase supplies of 90-150 volts	121.50
ESP 120-16A/BX	- ready boxed for single phase supplies of 90-150 volts	130.00
ESP 240-16A	- for single phase supplies of 200-280 volts	121.50
ESP 240-16A/BX	- ready boxed for single phase supplies of 200-280 volts	130.00
ESP 277-16A	- for single phase supplies of 232-350 volts	128.00
ESP 277-16A/BX	- ready boxed for single phase supplies of 232-350 volts	138.00



Plug-in protection for mains power supplies

Part No.	Description	Price Each £
ESP MC/19BK	Brackets to mount ESP MC series on 19" racks	12.00
ESP MC	Plug-in power conditioner, British style (3 square pin) plug and sockets, 220-260 volt supplies (13 A or less)	273.00
ESP MC/TN/RJ11	Plug-in power conditioner, British style (3 square pin) plug and sockets, 220-260 volt supplies (13 A or less) with telephone/fax protection	319.00
ESP MC/Cat-5e	Plug-in power conditioner, British style (3 square pin) plug and sockets, 220-260 volt supplies (13 A or less) with computer network protection	408.00

NOTE: For ABB order codes please see the relevant Fursec part number in the alphanumeric index.

Electronic systems protection

Data & signal protection



Twisted pair data communication, signal & telephone lines

Part No.	Description	Price Each £
ESP 06D	Protector for twisted pair data communication or signal lines of up to 6 volts	73.50
ESP 15D	Protector for twisted pair data communication or signal lines of up to 15 volts	73.50
ESP 30D	Protector for twisted pair data communication or signal lines of up to 30 volts	73.50
ESP 50D	Protector for twisted pair data communication or signal lines of up to 50 volts	73.50
ESP 110D	Protector for twisted pair data communication or signal lines of up to 110 volts	73.50
ESP TN	Protector for twisted pair phone lines with a maximum (ringing) voltage of 296 volts	73.50



Twisted pair data communication & signal lines (lower in-line resistance, higher current and higher bandwidth)

Part No.	Description	Price Each £
ESP 06E	Protector for twisted pair data communication or signal lines of up to 6 volts	90.00
ESP 15E	Protector for twisted pair data communication or signal lines of up to 15 volts	90.00
ESP 30E	Protector for twisted pair data communication or signal lines of up to 30 volts	90.00
ESP 50E	Protector for twisted pair data communication or signal lines of up to 50 volts	90.00
ESP 110E	Protector for twisted pair data communication or signal lines of up to 110 volts	90.00

5



Twisted pair data communication & signal lines (lower in-line resistance, higher current)

Part No.	Description	Price Each £
ESP 06H	Protector for twisted pair data communication or signal lines of up to 6 volts	128.00
ESP 15H	Protector for twisted pair data communication or signal lines of up to 15 volts	128.00
ESP 30H	Protector for twisted pair data communication or signal lines of up to 30 volts	128.00
ESP 50H	Protector for twisted pair data communication or signal lines of up to 50 volts	128.00
ESP 110H	Protector for twisted pair data communication or signal lines of up to 110 volts	128.00

NOTE: For ABB order codes please see the relevant Furse part number in the alphanumeric index.

Electronic systems protection

Data & signal protection



Twisted pair data communication, signal & telephone lines (Ready-boxed protectors)

Part No.	Description	Price Each £
Ready-boxed protector for data or signal lines up to 6 volts		
ESP 06D/BX	- twisted pair with screw terminals	83.00
ESP 06D/BX/I	- twisted pair with IDC terminals	83.00
ESP 06D/2BX	- 2 twisted pairs with screw terminals	134.50
ESP 06D/2BX/I	- 2 twisted pairs with IDC terminals	134.50
Ready-boxed protector for data or signal lines up to 15 volts		
ESP 15D/BX	- twisted pair with screw terminals	83.00
ESP 15D/BX/I	- twisted pair with IDC terminals	83.00
ESP 15D/2BX	- 2 twisted pairs with screw terminals	134.50
ESP 15D/2BX/I	- 2 twisted pairs with IDC terminals	134.50
Ready-boxed protector for data or signal lines up to 30 volts		
ESP 30D/BX	- twisted pair with screw terminals	83.00
ESP 30D/BX/I	- twisted pair with IDC terminals	83.00
ESP 30D/2BX	- 2 twisted pairs with screw terminals	134.50
ESP 30D/2BX/I	- 2 twisted pairs with IDC terminals	134.50
Ready-boxed protector for data or signal lines up to 50 volts		
ESP 50D/BX	- twisted pair with screw terminals	83.00
ESP 50D/BX/I	- twisted pair with IDC terminals	83.00
ESP 50D/2BX	- 2 twisted pairs with screw terminals	134.50
ESP 50D/2BX/I	- 2 twisted pairs with IDC terminals	134.50
Ready-boxed protector for data or signal lines up to 110 volts		
ESP 110D/BX	- twisted pair with screw terminals	83.00
ESP 110D/BX/I	- twisted pair with IDC terminals	83.00
ESP 110D/2BX	- 2 twisted pairs with screw terminals	134.50
ESP 110D/2BX/I	- 2 twisted pairs with IDC terminals	134.50
Ready-boxed protector for phone lines with a maximum (ringing) voltage of 296 volts		
ESP TN/BX	- twisted pair with screw terminals	83.00
ESP TN/BX/I	- twisted pair with IDC terminals	83.00
ESP TN/2BX	- 2 twisted pairs with screw terminals	134.50
ESP TN/2BX/I	- 2 twisted pairs with IDC terminals	134.50

NOTE: For ABB order codes please see the relevant Furuse part number in the alphanumeric index.

Electronic systems protection

Data & signal protection



Twisted pair data communication, signal & telecom lines - slim line, with removable protection module

Part No.	Description	Price Each £
ESP SL06	Protector for twisted pair data communication or signal lines of up to 6 volts	93.50
ESP SL15	Protector for twisted pair data communication or signal lines of up to 15 volts	93.50
ESP SL30	Protector for twisted pair data communication or signal lines of up to 30 volts	93.50
ESP SL50	Protector for twisted pair data communication or signal lines of up to 50 volts	93.50
ESP SL110	Protector for twisted pair data communication or signal lines of up to 110 volts	93.50
ESP SLTN	Protector for twisted pair phone lines with a maximum (ringing) voltage of 296 volts	93.50

Slim line protectors with removable protection module and isolated screen

ESP SL06/I	Protector for twisted pair data communication or signal lines of up to 6 volts	104.50
ESP SL15/I	Protector for twisted pair data communication or signal lines of up to 15 volts	104.50
ESP SL30/I	Protector for twisted pair data communication or signal lines of up to 30 volts	104.50
ESP SL50/I	Protector for twisted pair data communication or signal lines of up to 50 volts	104.50
ESP SL110/I	Protector for twisted pair data communication or signal lines of up to 110 volts	104.50

Slim line, intrinsically Safe protectors (ATEX approved) with removable protection module

ESP SL15X	Protector for twisted pair data communication or signal lines of up to 15 volts	99.00
ESP SL30X	Protector for twisted pair data communication or signal lines of up to 30 volts	99.00

Slim line, intrinsically Safe protectors (ATEX approved) with removable protection module and isolated screen

ESP SL15X/I	Protector for twisted pair data communication or signal lines of up to 15 volts	110.00
ESP SL30X/I	Protector for twisted pair data communication or signal lines of up to 30 volts	110.00

Slim line protectors with removable protection module and LED status indication

ESP SL06L	Protector for twisted pair low current DC power lines of up to 6 volts	99.00
ESP SL15L	Protector for twisted pair low current DC power lines of up to 15 volts	99.00
ESP SL30L	Protector for twisted pair low current DC power lines of up to 30 volts	99.00
ESP SL50L	Protector for twisted pair low current DC power lines of up to 50 volts	99.00
ESP SL110L	Protector for twisted pair low current DC power lines of up to 110 volts	99.00

Slim line protectors with removable protection module, LED status indication and isolated screen

ESP SL06L/I	Protector for twisted pair low current DC power lines of up to 6 volts	110.00
ESP SL15L/I	Protector for twisted pair low current DC power lines of up to 15 volts	110.00
ESP SL30L/I	Protector for twisted pair low current DC power lines of up to 30 volts	110.00
ESP SL50L/I	Protector for twisted pair low current DC power lines of up to 50 volts	110.00
ESP SL110L/I	Protector for twisted pair low current DC power lines of up to 110 volts	110.00

Slim line, intrinsically Safe protectors (ATEX approved) with removable protection module and LED status indication

ESP SL15XL	Protector for twisted pair low current DC power lines of up to 15 volts	104.50
ESP SL30XL	Protector for twisted pair low current DC power lines of up to 30 volts	104.50

Slim line, Intrinsically Safe protectors (ATEX approved) with removable protection module, LED status indication and isolated screen

ESP SL15XL/I	Protector for twisted pair low current DC power lines of up to 15 volts	115.50
ESP SL30XL/I	Protector for twisted pair low current DC power lines of up to 30 volts	115.50

Slim line protectors with removable protection module with, LED status indication and optional isolated screen for 4-20 mA systems

ESP SL30L/4-20	Protector for 4-20 mA systems of up to 30 volts	104.50
ESP SL30L/4-20/I	Protector for 4-20 mA systems of up to 30 volts, with isolated screen	115.50

Slim line protectors with removable protection module for 3 wire systems

ESP SL06/3W	Protector for 3-wire data communication or signal lines of up to 6 volts	99.00
ESP SL15/3W	Protector for 3-wire data communication or signal lines of up to 15 volts	99.00
ESP SL30/3W	Protector for 3-wire data communication or signal lines of up to 30 volts	99.00
ESP SL50/3W	Protector for 3-wire data communication or signal lines of up to 50 volts	99.00
ESP SL110/3W	Protector for 3-wire data communication or signal lines of up to 110 volts	99.00

NOTE: For ABB order codes please see the relevant Furse part number in the alphanumeric index.

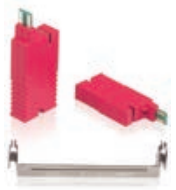
Electronic systems protection

Data & signal protection



High density data, signal & telephone lines

Part No.	Description	Price Each £
ESP 06Q	Protector for 4 twisted pair signal lines of up to 6 volts	267.00
ESP 15Q	Protector for 4 twisted pair signal lines of up to 15 volts	267.00
ESP 30Q	Protector for 4 twisted pair signal lines of up to 30 volts	267.00
ESP 50Q	Protector for 4 twisted pair signal lines of up to 50 volts	267.00
ESP 110Q	Protector for 4 twisted pair signal lines of up to 110 volts	267.00
ESP TNQ	Protector for 4 twisted pair phone lines with a maximum (ringing) voltage of 296 volts	267.00



Data & signal lines with LSA-PLUS modules

Part No.	Description	Price Each £
ESP KE10	Earth bar for connection of ESP KS series protectors to ten line LSA-PLUS disconnection modules	12.50
ESP KS06	Protector for 6 volt data & signal lines with LSA-PLUS disconnection modules	41.00
ESP KS15	Protector for 15 volt data & signal lines with LSA-PLUS disconnection modules	41.00
ESP KS30	Protector for 30 volt data & signal lines with LSA-PLUS disconnection modules	41.00
ESP KS50	Protector for 50 volt data & signal lines with LSA-PLUS disconnection modules	41.00



PCB mount data communication, signal & telephone lines

Part No.	Description	Price Each £
ESP PCB/06D	PCB mount protector for data communication or signal lines of up to 6 volts	66.00
ESP PCB/15D	PCB mount protector for data communication or signal lines of up to 15 volts	66.00
ESP PCB/30D	PCB mount protector for data communication or signal lines of up to 30 volts	66.00
ESP PCB/50D	PCB mount protector for data communication or signal lines of up to 50 volts	66.00
ESP PCB/110D	PCB mount protector for data communication or signal lines of up to 110 volts	66.00
ESP PCB/TN	PCB mount protector for phone lines with a maximum (ringing) voltage of 296 volts	66.00
ESP PCB/06E	PCB mount protector for data communication or signal lines of up to 6 volts	80.00
ESP PCB/15E	PCB mount protector for data communication or signal lines of up to 15 volts	80.00
ESP PCB/30E	PCB mount protector for data communication or signal lines of up to 30 volts	80.00
ESP PCB/50E	PCB mount protector for data communication or signal lines of up to 50 volts	80.00
ESP PCB/110E	PCB mount protector for data communication or signal lines of up to 110 volts	80.00



Three wire RTD applications

Part No.	Description	Price Each £
ESP RTD	Protector for three wire RTD lines	94.00
ESP SL RTD	Slim line protector for three wire RTD lines, with removable protection module	99.00
ESP RTDQ	Protector for 3 three wire RTD lines	293.00



RS485 & Fieldbus applications

Part No.	Description	Price Each £
ESP RS485	Protector for RS 485 and Fieldbus	95.00
ESP SL RS485	Slim line protector for RS 485 and Fieldbus	104.50
ESP RS485Q	Protector for 4 RS485 or Fieldbus lines	288.00

NOTE: For ABB order codes please see the relevant Furse part number in the alphanumeric index.

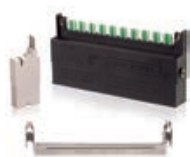
Electronic systems protection

Telecoms & computer line protection



Plug-in protectors for telephone & ISDN lines

Part No.	Description	Price Each £
ESP TN/JP	Protection for all 6 conductors on phone lines with British style jack plug and socket connections	111.00
ESP TN/RJ11-2/6	Protection for the middle 2 (of 6) conductors on phone lines with RJ11 connections	83.00
ESP TN/RJ11-4/6	Protection for the middle 4 (of 6) conductors on phone lines with RJ11 connections	99.00
ESP TN/RJ11-6/6	Protection for all 6 conductors on phone lines with RJ11 connections	111.00
ESP ISDN/RJ45-4/8	Protection for the middle 4 (of 8) conductors on ISDN lines with RJ45 connections	117.50
ESP ISDN/RJ45-8/8	Protection for all 8 conductors on ISDN lines with RJ45 connections	149.50



PSTN & ISDN telephone lines with LSA-PLUS connections

Part No.	Description	Price Each £
ESP KE10	Earth bar for connection of ESP KT1/2 to ten line LSA-PLUS disconnection modules	12.50
ESP KT1	Protector for PSTN and U interface ISDN lines with LSA-PLUS connections	20.50
ESP KT1/PTC	Protector with power line cross protection for PSTN and U interface ISDN lines with LSA-PLUS	23.50
ESP KT2	Protector for S/T interface ISDN lines with LSA-PLUS connections	28.50
ESP K10T1	Protector for up to ten PSTN and U interface ISDN lines on a ten line LSA-PLUS disconnection module	176.00
ESP K10T1/PTC	Protector with power line cross protection for up to ten PSTN and U interface ISDN lines on a ten line LSA-PLUS disconnection module	192.00
ESP K10T2	Protector for up to ten S/T interface ISDN lines on a ten line LSA-PLUS disconnection module	234.00

5



Computer networks up to Cat-6 cabling & PoE+

Part No.	Description	Price Each £
ESP Cat-5e	Protector for twisted pair Ethernet (10baseT and 100baseT) networks with up to Cat-5e cabling and RJ45 connections	197.50
ESP Cat-5e/PoE	Protector for twisted pair Power over Ethernet PLUS PoE+ (10baseT, 100baseT and 1000baseT gigabit) networks with up to Cat-5e cabling and RJ45 connections	211.00
ESP Cat-6	Protector for twisted pair Power over Ethernet PLUS PoE+ (10baseT, 100baseT and 1000baseT gigabit) networks with up to Cat-6 cabling and RJ45 connections	232.00
ESP Cat-6/PoE	Protector for twisted pair Power over Ethernet (10baseT, 100baseT, 1000baseT gigabit and 10GbaseT) networks with up to Cat-6 cabling and RJ45 connections	259.00



Local protection for computer communications

Part No.	Description	Price Each £
ESP LA-5/25	Local protector for DB-25 Async RS 232	46.50
ESP LA-25/25	Local protector for DB-25 RS 232	70.00
ESP LA-9/9	Local protector for DB-9 RS 232	60.00
ESP LB-9/9	Local protector for DB-9 RS 422, RS 423 and RS 485	60.00
ESP LA-15/15	Local protector for DB-15 RS 232	68.50
ESP LB-15/15	Local protector for DB-15 RS 422, RS 423 and RS 485	68.50
ESP LB-25/25	Local protector for DB-25 RS 422, RS 423 and RS 485	70.00

NOTE: For ABB order codes please see the relevant Furse part number in the alphanumeric index.

Electronic systems protection

Telecoms & computer line protection



Local protectors for internal cabling up to Cat-5 with RJ45 connections

Part No.	Description	Price Each £
ESP LN	Single port protector	91.00
ESP LN-4	Four port protector	444.00
ESP LN-8	Eight port protector	749.00
ESP LN-8/16	Eight port 19" rack mount protector	844.00
ESP LN-16/16	Sixteen port 19" rack mount protector	1273.00

Specific systems protection



Mains supplies - wind turbine (WT) power distribution systems

Part No.	Description	Price Each £
ESP 690/25/WT	Enhanced single mode protector with maximum surge current rating of 25 kA 10/350 for 690 volt WT systems	503.00
ESP 690/12.5/WT	Enhanced single mode protector with maximum surge current rating of 12.5 kA 10/350 for 690 volt WT systems	390.00
ESP CE7	Connection and earthing bar for use with 3 of ESP 690/12.5/WT protectors for TNC systems	7.25
ESP CE9	Connection and earthing bar for use with 3 of ESP 690/25/WT protectors for TNC systems	7.75
ESP CE10	Connection and earthing bar for use with 4 of ESP 690/12.5/WT protectors for TNS systems	8.25
ESP CE13	Connection and earthing bar for use with 4 of ESP 690/25/WT protectors for TNS systems	9.00



DC photo-voltaic (PV) power distribution systems

Part No.	Description	Price Each £
ESP DC1000/12.5/PV	Enhanced protector with maximum surge current rating of 12.5 kA 10/350 for 1000V DC PV systems	560.00
ESP DC550/12.5/PV	Enhanced protector with maximum surge current rating of 12.5 kA 10/350 for 550 V DC PV systems	390.00



SSI mains power supplies & data links

Part No.	Description	Price Each £
ESP SSI/B	Protector base unit for SSI data links	30.00
ESP SSI/M	Protection module for SSI data links	60.00
ESP SSI/120AC	Protector for single phase SSI mains power supplies of 90-150 volts	293.00
ESP SSI/140AC	Protector for single phase SSI mains power supplies of 90-165 volts	293.00

NOTE: For ABB order codes please see the relevant Fursee part number in the alphanumeric index.

Electronic systems protection

Specific systems protection



Coaxial cable TV (CATV) systems

Part No.	Description	Price Each £
ESP CATV/F	Protector with female F connectors for coaxial CATV lines	90.00
ESP TV/F	Protector with female F connectors for coaxial TV lines	90.00
ESP TV/EURO	Protector with female EURO-TV connectors for coaxial EURO-TV lines	94.00
ESP MATV/F	Protector with female F connectors for coaxial MATV lines	105.00
ESP SMATV/F	Protector with female F connectors for coaxial SMATV lines	100.50



Closed circuit TV video lines

Part No.	Description	Price Each £
ESP CCTV/B	Protector for coaxial CCTV video lines with BNC connections	90.00
ESP CCTV/T	Protector for twisted pair CCTV video lines with screw connections	90.00
ESP CCTV/B-15V	Protector for coaxial CCTV video lines with power/telemetry up to 15 V and BNC connections	95.00
ESP CCTV/T-15V	Protector for twisted pair CCTV video lines with power/telemetry up to 15 V and screw connections	95.00
ESP CCTV/B-30V	Protector for coaxial CCTV video lines with power/telemetry up to 30 V and BNC connections	95.00
ESP CCTV/T-30V	Protector for twisted pair CCTV video lines with power/telemetry up to 30 V and screw connections	95.00
ESP CCTV/B-50V	Protector for coaxial CCTV video lines with power/telemetry up to 50 V and BNC connections	95.00
ESP CCTV/T-50V	Protector for twisted pair CCTV video lines with power/telemetry up to 50 V and screw connections	95.00

5



Coaxial RF systems (for frequencies between DC and 2.7 GHz)

Part No.	Description	Price Each £
ESP RF 111x21	GDT-based protector with N female connectors for coaxial RF lines	86.50
ESP RF AA1x21	GDT-based protector with 7/16 DIN female connectors for coaxial RF lines	113.50
ESP RF 441x21	GDT-based protector with BNC female connectors for coaxial RF lines	78.50

NOTE - please refer to ESP RF data sheet to select correct GDT (number 1 to 6) to substitute for 'x' in product Part



Higher performance coaxial RF systems (for frequencies between 50 MHz and 2.7 GHz)

Part No.	Description	Price Each £
ESP RF 111A11	Protector with N female connectors for coaxial RF lines	113.50
ESP RF AA1A11	Protector with 7/16 DIN female connectors for coaxial RF lines	141.00
ESP RF 441A11	Protector with BNC female connectors for coaxial RF lines	106.00

NOTE - For ABB order codes please see the relevant Furse part number in the alphanumeric index.

Electronic systems protection

Accessories



Weatherproof enclosures

Part No.	Description	Price Each £
WBX 2/G	Weatherproof enclosure, with grey lid, for up to 2 single earth stud protectors	28.00
WBX 3	Weatherproof enclosure, with clear lid, for ESP 120 M1, ESP 240 M1 or ESP 277 M1	33.50
WBX 3/G	Weatherproof enclosure, with grey lid, for 1 double earth stud or up to 3 single earth stud protectors	33.50
WBX 4	Weatherproof enclosure, with clear lid, for an ESP 208 M1, ESP 415 M1 or ESP 480 M1 or a CME 4 and	40.00
WBX 4/GS	Weatherproof enclosure, with grey lid and secure head screws, for a CME 4 and protectors	44.50
WBX 8	Weatherproof enclosure, with clear lid, for a CME 8 and protectors	57.50
WBX 8/GS	Weatherproof enclosure, with grey lid and secure head screws, for a CME 8 and protectors	66.00
WBX 16/2/G	Weatherproof enclosure, with grey lid, for one or two CME 16 and protectors	197.50
WBX D4	Weatherproof enclosure for up to 4TE wide DIN mountable protectors, clear hinged inspection lid	78.00
WBX D8	Weatherproof enclosure for up to 8TE wide DIN mountable protectors, clear hinged inspection lid	102.50
WBX M2	Weatherproof enclosure, with clear lid, for an ESP 415 M2 or ESP 480 M2	149.50
WBX M4	Weatherproof enclosure, with clear lid, for an ESP 415 M4 or ESP 480 M4	190.00
WBX SLQ	Weatherproof enclosure, with clear lid, for ESP SL or ESP Q protectors	68.00
WBX SLQ/G	Weatherproof enclosure, with grey lid, for ESP SL or ESP Q protectors	73.50



Combined mounting & earthing kits

Part No.	Description	Price Each £
CME 4	Combined mounting and earthing kit with 4 mounting positions	18.50
CME 8	Combined mounting and earthing kit with 8 mounting positions	26.50
CME 16	Combined mounting and earthing kit with 16 mounting positions	43.50
CME 32	Combined mounting and earthing kit with 32 mounting positions	78.50



ESP remote display unit

Part No.	Description	Price Each £
Remote display unit for use with the ESP M1R, M2R and M4R Series		
ESP RDU/415M1R	Remote display unit for ESP 415M1R three phase protector	71.00
ESP RDU/415M2R	Remote display unit for ESP 415M2R three phase protector	71.00
ESP RDU/415M4R	Remote display unit for ESP 415M4R three phase protector	71.00
ESP RDU/480M1R	Remote display unit for ESP 480M1R three phase protector	71.00
ESP RDU/480M2R	Remote display unit for ESP 480M2R three phase protector	71.00
ESP RDU/480M4R	Remote display unit for ESP 480M4R three phase protector	71.00
ESP RDU-SEAL	Seal for M1R/M2R/M4R remote display units (RDU) to IP64	3.50
Remote display for use with the ESP D1R variants		
ESP RDU D1R/208	Remote LED display for three phase 208 V D1R protector	120.00
ESP RDU D1R/415	Remote LED display for three phase 415 V D1R protector	120.00
ESP RDU D1R/480	Remote LED display for three phase 480 V D1R protector	120.00
ESP RDU D1R/LCD/208	Remote LCD display for three phase 208 V D1R protector	200.00
ESP RDU D1R/LCD/415	Remote LCD display for three phase 415 V D1R protector	200.00
ESP RDU D1R/LCD/480	Remote LCD display for three phase 480 V D1R protector	200.00

NOTE: For ABB order codes please see the relevant Fursee part number in the alphanumeric index.

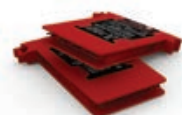
Electronic systems protection

Accessories



Cable assembly

Part No.	Description	Price Each £
Cable assemblies for connecting display units to suitable three phase protectors		
ESP RLA-1	1 m cable assembly for three phase M series Remote Display Unit	14.50
ESP RLA-2	2 m cable assembly for three phase M series Remote Display Unit	16.00
ESP RLA-4	4 m cable assembly for three phase M series Remote Display Unit	18.00
ESP RLA HD-1	1 m cable assembly for D1 Remote Display Unit	27.50
ESP RLA HD-2	2 m cable assembly for D1 Remote Display Unit	31.50
ESP RLA HD-4	4 m cable assembly for D1 Remote Display Unit	38.50
Cable assembly with RJ45 connections 1 m unshielded cable assembly with RJ45 connections		
ESP CAT5e/UTP-1	Cable assembly with RJ45 connections	12.00
ESP CAT6/STP-2	2 m Cat-6 shielded cable assembly with RJ45 connections	13.00



Slim line replacement base/module

Part No.	Description	Price Each £
Slim Line protector replacement base		
ESP SL/B	For use with standard and 4-20 mA Slim Line Series	33.50
ESP SL/I/B	Isolated screen version for use with standard and 4-20 mA Slim Line Series	45.00
ESP SLX/B	For use with Slim Line Intrinsically Safe (ATEX) Series	36.00
ESP SLX/I/B	Isolated screen version for use with Slim Line Intrinsically Safe (ATEX) Series	47.00
ESP SL/3W/B	For use with Slim Line 3-wire Series	36.00
ESP SLRTD/B	For use with Slim Line RTD Series	36.00
ESP SL RS485/B	For use with Slim Line RS485 Series	45.00
Slim Line protector replacement module		
ESP SL06/M	For use with Slim Line Series, 6V	67.00
ESP SL15/M	For use with Slim Line Series, 15V	67.00
ESP SL30/M	For use with Slim Line Series, 30V	67.00
ESP SL50/M	For use with Slim Line Series, 50V	67.00
ESP SL110/M	For use with Slim Line Series, 110V	67.00
ESP SLTN/M	For use with Slim Line TN Series	67.00
ESP SL15X/M	For use with Slim Line Intrinsically Safe (ATEX) Series, 15 V	70.50
ESP SL30X/M	For use with Slim Line Intrinsically Safe (ATEX) Series, 30 V	70.50
ESP SLRTD/M	For use with Slim Line RTD Series	70.50
ESP SLRS485/M	For use with Slim Line RS485 Series	67.00
Slim Line LED protector replacement module		
ESP SL06L/M	For use with Slim Line LED Series, 6 V	72.50
ESP SL15L/M	For use with Slim Line LED Series, 15 V	72.50
ESP SL30L/M	For use with Slim Line LED Series, 30 V	72.50
ESP SL50L/M	For use with Slim Line LED Series, 50 V	72.50
ESP SL110L/M	For use with Slim Line LED Series, 110 V	72.50
ESP SL30L/4-20/M	For use with Slim Line LED Series, 4-20 mA	78.00
ESP SL15XL/M	For use with Slim Line Intrinsically Safe (ATEX) LED Series, 15 V	76.00
ESP SL30XL/M	For use with Slim Line Intrinsically Safe (ATEX) LED Series, 30 V	76.00
ESP SL06/3W/M	For use with Slim Line 3-wire LED Series, 6 V	70.50
ESP SL15/3W/M	For use with Slim Line 3-wire LED Series, 15 V	70.50
ESP SL30/3W/M	For use with Slim Line 3-wire LED Series, 30 V	70.50
ESP SL50/3W/M	For use with Slim Line 3-wire LED Series, 50 V	70.50
ESP SL110/3W/M	For use with Slim Line 3-wire LED Series, 110 V	70.50

NOTE: For ABB order codes please see the relevant Furse part number in the alphanumeric index.

Electronic systems protection

Accessories



Connecting & earthing bar

Part No.	Description	Price Each £
ESP CE7	Connection and earthing bar for use with 3 of ESP 690/12.5/WT protectors for TNC systems	7.25
ESP CE9	Connection and earthing bar for use with 3 of ESP 690/25/WT protectors for TNC systems	7.75
ESP CE10	Connection and earthing bar for use with 4 of ESP 690/12.5/WT protectors for TNS systems	8.25
ESP CE13	Connection and earthing bar for use with 4 of ESP 690/25/WT protectors for TNS systems	9.00



ESP PTE002

Part No.	Description	Price Each £
ESP PTE002	SSI Portable Tester for Furse ESP SSI/M data link module	POA



ESP RF mounting plates

Part No.	Description	Price Each £
ESP RF BK1	Straight mounting plate	19.50
ESP RF BK2	90° mounting plate	22.50
ESP RF BK3	Bulkhead through mounting plate (single)	24.50
ESP RF BK4	Bulkhead through mounting plate (4 protectors)	24.50



ESP RF GDT-x

Part No.	Description	Price Each £
ESP RF GDT-1	90 V Gas Discharge Tube	9.00
ESP RF GDT-2	150 V Gas Discharge Tube	9.00
ESP RF GDT-3	230 V Gas Discharge Tube	9.00
ESP RF GDT-4	350 V Gas Discharge Tube	9.00
ESP RF GDT-5	470 V Gas Discharge Tube	9.00
ESP RF GDT-6	600 V Gas Discharge Tube	9.00
ESP RF GDT-A	600 V Gas Discharge Tube	9.00

NOTE: For ABB order codes please see the relevant Furse part number in the alphanumeric index.

Part number index - earthing & lightning protection

Alphanumeric product list

Part No.	Page No.	Price £ (or price each £)					
		4501-4600	4601-4700	4701-4800	4801-4900	4901-5000	5001-5100
1	4/44					75.63	
10	4/44					718.52	
103101-FU	2/9					17.45	
103102-FU	2/9					5.88	
103103-FU	2/9					15.66	
103110-FU	2/9					24.15	
103118-FU	2/9					30.39	
10H-FU	3/31					11.70	
115P10	4/44					8.94	
150P10	4/44					10.94	
15P10	4/44					2.51	
1H-FU	3/31					8.60	
2	4/44					77.80	
200P10	4/44					14.81	
20H-FU	3/31					18.91	
250P10	4/44					17.77	
25P10	4/44					3.12	
2H-FU	3/31					8.19	
3	4/44					94.11	
30H-FU	3/31					23.59	
32P10	4/44					3.47	
350M-FU	3/31					55.28	
3902	3/33					12.19	
3903	3/33					26.75	
3904	3/33					19.32	
3905-TB	3/33					22.75	
3906-TB	3/33					27.36	
3907	3/33					41.96	
3908	3/33					51.41	
3909-TB	3/33					61.61	
4	4/44					140.99	
40H-FU	3/31					28.65	
45P10	4/44					4.32	
499000-FU	2/9					264.29	
499005-FU	2/9					282.68	
499006-FU	2/9					421.38	
499007-FU	2/9					762.03	
499100-FU	2/9					11.01	
499101-FU	2/9					15.26	
4H-FU	3/31					5.95	
5	4/44					301.15	
6	4/44					304.27	
65P10	4/44					5.54	
7	4/44					307.61	
8	4/44					664.69	
8H-FU	3/31					6.71	
9	4/44					326.34	
90P10	4/44					7.25	
912000-FU	2/9					106.59	
912001-FU	2/9					133.39	
912002-FU	2/9					193.86	
912003-FU	2/9					350.94	
912004-FU	2/9					354.68	
912005-FU	2/9					392.70	
912006-FU	2/9					514.56	
912007-FU	2/9					575.96	
912008-FU	2/9					637.36	
912009-FU	2/9					699.08	
912010-FU	2/9					760.47	
912011-FU	2/9					836.52	
912013-FU	2/9					1270.98	
919828-FU	2/9					11.88	
AK005	3/27					1.17	

Part No.	Page No.	Price £ (or price each £)					
		4501-4600	4601-4700	4701-4800	4801-4900	4901-5000	5001-5100
AS100	3/27						0.89
AV005	2/7						36.53
B135	4/48						120.09
BA205	2/3	17.64	17.85	18.06	18.27	18.48	18.69
BA210	2/3	34.74	35.16	35.59	36.01	36.43	36.86
BA225	2/3	55.58	56.24	56.90	57.55	58.21	58.87
BA230	2/3	69.88	70.72	71.56	72.40	73.23	74.08
BA231	2/3	81.47	82.32	83.15	83.99	84.83	85.67
BA235	2/3	119.97	121.40	122.83	124.28	125.71	127.14
BA240	2/3	108.00	109.29	110.59	111.88	113.18	114.47
BA250-FU	2/3	143.62	145.35	147.09	148.81	150.55	152.28
BC001	2/3						POA
BC002	2/3						POA
BC003	2/3						POA
BC004	2/3						POA
BC005	2/3						POA
BC006	2/3						POA
BC007	2/3						POA
BC008	2/3						POA
BC009	2/3						POA
BC010	2/3						POA
BC011	2/3						POA
BC012	2/3						POA
BC013	2/3						POA
BC014	2/3						POA
BCM	4/48						4.33
BD006-FU	2/4	8.04	8.12	8.20	8.28	8.37	8.45
BD006-FU-T	2/4	8.71	8.80	8.89	8.98	9.06	9.15
BD010-FU	2/4	8.17	8.25	8.33	8.42	8.50	8.60
BD010-FU-T	2/4	8.80	8.89	8.98	9.07	9.17	9.27
BD016-FU	2/4	10.86	10.98	11.10	11.22	11.34	11.45
BD016-FU-T	2/4	11.74	11.87	11.99	12.12	12.24	12.37
BD020	2/4	8.04	8.12	8.20	8.28	8.37	8.45
BD020-T	2/4	8.71	8.80	8.89	8.98	9.06	9.15
BD025	2/4	8.17	8.25	8.33	8.42	8.50	8.60
BD025-FU	2/4	16.66	16.81	16.97	17.12	17.27	17.42
BD025-FU-T	2/4	18.00	18.17	18.33	18.49	18.66	18.83
BD025-T	2/4	8.80	8.89	8.98	9.07	9.17	9.27
BD026	2/4	10.86	10.98	11.10	11.22	11.34	11.45
BD026-T	2/4	11.74	11.87	11.99	12.12	12.24	12.37
BD027	2/4	34.97	35.35	35.72	36.09	36.46	36.83
BD027-T	2/4	37.75	38.16	38.57	38.96	39.37	39.77
BD028	2/4	16.66	16.81	16.97	17.12	17.27	17.42
BD028-T	2/4	18.00	18.17	18.33	18.49	18.66	18.83
BD030	2/4	17.33	17.51	17.68	17.84	18.01	18.18
BD031	2/4	33.32	33.63	33.93	34.24	34.54	34.85
BD031-T	2/4	36.01	36.33	36.66	36.99	37.32	37.65
BD032	2/4	63.60	64.21	64.82	65.43	66.04	66.65
BD032-T	2/4	68.68	69.33	69.99	70.65	71.31	71.96
BD033	2/4	POA	POA	POA	POA	POA	POA
BD033-T	2/4	POA	POA	POA	POA	POA	POA
BD034	2/4	POA	POA	POA	POA	POA	POA
BD034-T	2/4	POA	POA	POA	POA	POA	POA
BD035	2/4	18.57	18.77	18.96	19.15	19.33	19.53
BD035-FU	2/4	17.33	17.51	17.68	17.84	18.01	18.18
BD035-FU-T	2/4	18.57	18.77	18.96	19.15	19.33	19.53
BD050-FU	2/4	33.32	33.63	33.93	34.24	34.54	34.85
BD050-FU-T	2/4	36.01	36.33	36.66	36.99	37.32	37.65
BD070-FU	2/4	34.97	35.35	35.72	36.09	36.46	36.83
BD070-FU-T	2/4	37.75	38.16	38.57	38.96	39.37	39.77
BD095-FU	2/4	63.60	64.21	64.82	65.43	66.04	66.65
BD095-FU-T	2/4	68.68	69.33	69.99	70.65	71.31	71.96
BFC	4/48						15.88

Part number index - earthing & lightning protection

Alphanumeric product list

Part No.	Page No.	Price £ (or price each £)					
		4501-4600	4601-4700	4701-4800	4801-4900	4901-5000	5001-5100
BN001	2/19						17.72
BN002	2/19						49.71
BN005	3/33						3.95
BN010	3/33						7.16
BN101	2/19						20.29
BN102	2/19						45.56
BN105	3/33						4.17
BN113	3/33						7.28
BN115	3/33						8.08
BN120	3/33						12.58
BN125	3/32						17.20
BN130	3/32						20.47
BN150	3/30						22.44
BN155	3/30						68.56
BN175	3/33						42.76
BN176	3/33						29.28
BN300-FU	3/32						10.83
BN305	3/32						10.83
BN320	3/32						26.34
BN325	3/32						27.34
BN505	3/34						15.07
BN505-T	3/34						POA
BN510	3/34						23.09
BN510-T	3/34						POA
BR005	2/8						32.59
BR105	2/8						47.99
BT150	3/35						37.47
BT160	3/35						43.88
CA015	2/13						3.60
CA015-FU	2/13						3.60
CA020	2/13						3.60
CA020-FU	2/13						3.60
CA025	2/13						3.60
CA025-FU	2/13						3.60
CA030	2/13						3.60
CA030-FU	2/13						3.60
CA040	2/13						3.60
CA040-FU	2/13						3.60
CA045	2/13						3.60
CA045-FU	2/13						3.60
CA050	2/13						3.60
CA050-FU	2/13						3.60
CA861	2/13						3.99
CA871	2/13						3.99
CA872	2/13						3.99
CA876	2/13						3.99
CA881	2/13						3.99
CA886	2/13						3.99
CA887	2/13						3.99
CA900	2/16						40.63
CB006	2/2	1.36	1.38	1.40	1.42	1.44	1.46
CB016	2/2	3.66	3.72	3.78	3.85	3.91	3.98
CB025	2/2	6.00	6.11	6.21	6.32	6.42	6.53
CB035	2/2	8.31	8.47	8.64	8.79	8.95	9.10
CB050-FU	2/2	8.63	8.79	8.95	9.11	9.27	9.43
CB070	2/2	13.16	13.35	13.54	13.74	13.92	14.11
CB070-T	2/2	14.57	14.78	15.00	15.21	15.42	15.64
CB071	2/2	12.78	12.97	13.17	13.36	13.55	13.74
CB095	2/2	20.24	20.65	21.05	21.45	21.85	22.25
CB120	2/2	25.63	26.12	26.61	27.10	27.59	28.08
CB150-FU	2/2	33.09	33.72	34.35	34.97	35.60	36.22
CB185	2/2	41.26	42.02	42.78	43.56	44.32	45.09
CB240	2/2	54.15	55.16	56.16	57.18	58.19	59.20
CB300-FU	3/32						10.83
CB305	3/32						10.83
CB320	3/32						26.34
CB325	3/32						27.34
CB505	3/34						15.07
CB505-T	3/34						POA
CB510	3/34						23.09
CB510-T	3/34						POA
CB700	3/35						37.47
CB700-T	3/35						43.88
CB900	3/35						40.63
CB900-T	3/35						40.63
CC016	2/6	4.21	4.28	4.35	4.42	4.50	4.57
CC025	2/6	6.98	7.08	7.18	7.29	7.40	7.51
CC035	2/6	9.52	9.68	9.85	10.01	10.16	10.32
CC050	2/6	10.26	10.42	10.59	10.75	10.90	11.06
CC070	2/6	13.50	13.70	13.89	14.08	14.26	14.46
CC095	2/6	22.89	23.29	23.68	24.07	24.47	24.85
CC120-FU	2/6	29.37	29.87	30.37	30.87	31.36	31.86
CC150-FU	2/6	35.56	36.19	36.81	37.44	38.07	38.69
CC185	2/6	48.21	48.97	49.73	50.50	51.27	52.03
CC240	2/6	61.77	62.77	63.76	64.76	65.77	66.76
CC300	2/6	74.07	75.22	76.38	77.54	78.70	79.86
CC400-FU	2/6	POA	POA	POA	POA	POA	POA
CD035	2/2	9.10	9.30	9.49	9.68	9.87	10.06
CD036	2/5	10.30	10.49	10.67	10.85	11.02	11.21
CD038	2/5	10.30	10.49	10.67	10.85	11.02	11.21
CD039	2/5	10.30	10.49	10.67	10.85	11.02	11.21
CD040	2/5	10.30	10.49	10.67	10.85	11.02	11.21
CD041	2/5	10.30	10.49	10.67	10.85	11.02	11.21
CD080	2/2						2.83
CD081	2/5						4.55
CD083	2/5						4.55
CD084	2/5						4.55
CD085	2/5						4.55
CD086	2/5						4.55
CG005	3/26						1.70
CG013	3/26						1.51
CG170	3/24						6.85
CG177	3/25						6.85
CG270	3/24						6.33
CG277	3/25						6.33
CG370	3/24						9.33
CG377	3/25						9.33
CG500	2/8						14.25

Part number index - earthing & lightning protection

Alphanumeric product list

Part No.	Page No.	Price £ (or price each £)					
		4501-4600	4601-4700	4701-4800	4801-4900	4901-5000	5001-5100
CG600	2/8						19.36
CG705	2/8						23.98
CG710	2/8						23.98
CM005	2/19						23.29
CM015	3/28						22.79
CM020	3/28						22.79
CM025	3/28						90.06
CM030	3/28						90.06
CN005	2/18						10.66
CN1010	3/40						92.76
CN1010-T	3/41						93.27
CN105-H	2/18						13.06
CN120120	3/40						210.78
CN120120-T	3/41						231.86
CN150120	3/40						210.78
CN150120-T	3/41						231.86
CN150150	3/40						226.32
CN150150-T	3/41						248.96
CN1616	3/40						239.39
CN1616-T	3/41						239.90
CN185185	3/40						202.57
CN185185-T	3/41						222.82
CN18595	3/40						240.49
CN18595-T	3/41						264.54
CN240120	3/40						146.51
CN240120-T	3/41						161.16
CN240150	3/40						POA
CN240150-T	3/41						POA
CN240185	3/40						POA
CN240185-T	3/41						POA
CN240240	3/40						POA
CN240240-T	3/41						POA
CN2510	3/40						131.37
CN2510-T	3/41						131.88
CN2525	3/40						131.92
CN2525-T	3/41						132.43
CN300120	3/40						POA
CN300120-T	3/41						POA
CN300300	3/40						POA
CN300300-T	3/41						POA
CN305	2/19						11.10
CN310	2/19						8.29
CN3516	3/40						68.43
CN3516-T	3/41						75.28
CN3535	3/40						63.29
CN3535-T	3/41						69.62
CN5025	3/40						126.02
CN5025-T	3/41						138.62
CN5050	3/40						119.91
CN5050-T	3/41						131.90
CN7025	3/40						58.68
CN7025-T	3/41						64.56
CN7035	3/40						132.70
CN7035-T	3/41						145.97
CN7070	3/40						135.68
CN7070-T	3/41						181.76
CN910	2/19						47.80
CN910-UL	2/19						47.80
CN915	2/19						49.67
CN920	2/19						49.67
CN925	2/19						49.67
CN9535	3/40						204.73
CN9535-T	3/41						403.35

Part No.	Page No.	Price £ (or price each £)					
		4501-4600	4601-4700	4701-4800	4801-4900	4901-5000	5001-5100
CN9570	3/40						196.91
CN9570-T	3/41						216.60
CN9595	3/40						180.33
CN9595-T	3/41						355.41
CP005	2/12						0.73
CP010	2/12						0.73
CP015	2/12						0.73
CP020	2/12						0.73
CP025	2/12						0.79
CP030	2/12						0.79
CP035	2/12						0.79
CP040	2/12						0.79
CP045	2/12						0.79
CP050	2/12						0.79
CP060	2/12						1.43
CP065	2/12						1.90
CP105	2/10						4.05
CP110-H	2/10						2.31
CP115	2/10						4.64
CP120-H	2/10						7.95
CP125	2/10						4.91
CP130	2/10						9.89
CP205	2/10						4.62
CP210-H	2/10						2.78
CP215	2/10						7.06
CP216	2/10						4.77
CP220-H	2/10						4.41
CP225	2/10						7.62
CP227	2/10						4.97
CP230-H	2/10						6.08
CP240-H	2/10						7.32
CP241	2/10						7.57
CP245	2/10						7.45
CP256	2/10						7.57
CP260-H	2/10						5.80
CP265	2/10						13.61
CP305	2/10						24.94
CP405	2/11						2.46
CP410	2/11						0.79
CP415	2/11						0.81
CP510	2/11						0.87
CP515	2/11						0.87
CP517	2/11						2.19
CP805	2/11						7.61
CP806	2/11						6.82
CP810	2/11						7.61
CP815	2/11						7.61
CP816	2/11						6.82
CP835	2/11						9.86
CP861	2/12						0.92
CP871	2/12						0.92
CP872	2/12						0.92
CP876	2/12						0.92
CP881	2/12						0.92
CP886	2/12						0.92
CP887	2/12						0.92
CP905	2/11						0.99
CP910	2/11						1.00
CP915	2/11						0.99
CP915	2/11						0.99
CP920	2/11						3.24
CP925	2/11						0.97
CP935	2/11						0.97

Part number index - earthing & lightning protection

Alphanumeric product list

Part No.	Page No.	Price £ (or price each £)					Part No.	Page No.	Price £ (or price each £)					
		4501-4600	4601-4700	4701-4800	4801-4900	4901-5000			5001-5100	4501-4600	4601-4700	4701-4800	4801-4900	4901-5000
CR105	3/29					7.71	CW045-FU	2/14						3.15
CR108	3/29					11.52	CW050	2/14						3.15
CR110	3/29					17.84	CW050-FU	2/14						3.15
CR115	3/29					24.32	CW871	2/14						3.29
CR125	3/29					25.56	CW872	2/14						3.29
CR130	3/29					19.10	CW886	2/14						3.29
CR205	3/30					5.90	CW887	2/14						3.29
CR215	3/30					35.69	CW905	2/16						31.32
CR220	3/30					36.20	CW999	2/16						15.35
CR225	3/30					35.69	CX005-H	2/17						3.54
CR230	3/30					36.20	CX105-H	2/17						7.03
CR305	3/29					9.96	DET14C	3/28						POA
CR310	3/29					11.28	DET2/2	3/28						POA
CR315	3/29					13.83	DET3TC	3/28						POA
CR320	3/29					14.20	DET4TD2	3/28						POA
CR325	3/29					17.12	DL005	2/21						6.34
CR330	3/29					21.33	DL010	2/21						7.36
CR505	3/29					3.28	DT100	2/16						36.27
CR510-FU	3/29					4.00	DUXSEAL	4/48						36.97
CR515	3/29					3.45	EB0000	3/32						11.74
CR520	3/29					3.86	EB001	3/32						13.86
CR525	3/29					11.98	EB0110	3/32						12.54
CR700	3/29					17.15	EB0111	3/32						11.89
CR705	3/29					17.15	EB0120	3/32						13.07
CR710	3/29					19.56	EB0121	3/32						12.09
CR730	3/29					21.24	EB0130	3/32						14.02
CR740	3/29					19.56	EB0131	3/32						12.50
CR750	3/29					25.23	EB0211	3/32						12.09
CR810	2/18					14.69	EB0212	3/32						15.33
CR815	2/18					14.69	EB0221	3/32						12.50
CR820	2/18					22.72	EB0222	3/32						15.99
CR855	2/19					30.52	EB0231	3/32						12.90
CR860	2/19					30.52	EB0232	3/32						17.08
CR865	2/19					30.52	EB0311	3/32						12.50
CS350	3/33					20.94	EB0312	3/32						15.08
CS355	3/33					14.77	EB0321	3/32						12.90
CS405	2/18					11.51	EB0322	3/32						16.37
CS410	2/18					8.82	EB0332	3/32						17.16
CS505	2/18					8.70	EB1000	3/32						14.52
CS510	2/18					5.96	EB1110	3/32						15.79
CS605	2/18					9.37	EB1111	3/32						12.65
CS610	2/18					6.58	EB1120	3/32						17.70
CT005-H	2/17					5.04	EB1121	3/32						14.37
CT010-H	2/17					15.12	EB1130	3/32						18.63
CT105-H	2/17					8.77	EB1131	3/32						17.89
CT110-H	2/17					41.51	EB1211	3/32						13.54
CT115-H	2/17					44.85	EB1212	3/32						18.71
CT125	2/18					14.69	EB1221	3/32						15.66
CT130	2/18					14.69	EB1222	3/32						20.91
CT135	2/18					14.69	EB1231	3/32						19.69
CT305	2/19					35.71	EB1232	3/32						24.89
CT405	2/18					39.74	EB1311	3/32						15.15
CW015	2/14					3.15	EB1312	3/32						18.71
CW015-FU	2/14					3.15	EB1321	3/32						16.78
CW020	2/14					3.15	EB1322	3/32						22.02
CW020-FU	2/14					3.15	EB1331	3/32						13.97
CW025	2/14					3.15	EB1332	3/32						26.00
CW025-FU	2/14					3.15	ES300	3/27						205.23
CW030	2/14					3.15	ES300-12	3/27						37.13
CW030-FU	2/14					3.15	ES300-15	3/27						37.13
CW040	2/14					3.15	ES300-16	3/27						37.13
CW040-FU	2/14					3.15	ES300-20	3/27						37.13
CW045	2/14					3.15	ES300-34	3/27						37.13

Part number index - earthing & lightning protection

Alphanumeric product list

Part No.	Page No.	Price £ (or price each £)					
		4501-4600	4601-4700	4701-4800	4801-4900	4901-5000	5001-5100
ES300-58	3/27						37.13
ES310-03	3/27						31.45
ES310-05	3/27						40.39
ES310-10	3/27						64.16
ES310-15	3/27						97.03
ES310-20	3/27						135.89
ES310-30	3/27						192.48
ES320	3/27						73.91
F1-FU	4/47						269.37
F2-FU	4/47						456.70
FBB-10-200-7	3/34						POA
FBB-10-200-7-T	3/34						POA
FBB-10-400-7	3/34						POA
FBB-10-400-7-T	3/34						POA
FBB-120-200-17	3/34						POA
FBB-120-200-17-T	3/34						POA
FBB-120-400-17	3/34						POA
FBB-120-400-17-T	3/34						POA
FBB-150-200-17	3/34						POA
FBB-150-200-17-T	3/34						POA
FBB-150-400-17	3/34						POA
FBB-150-400-17-T	3/34						POA
FBB-16-200-9	3/34						POA
FBB-16-200-9-T	3/34						POA
FBB-16-400-9	3/34						POA
FBB-16-400-9-T	3/34						POA
FBB-25-200-11	3/34						POA
FBB-25-200-11-T	3/34						POA
FBB-25-400-11	3/34						POA
FBB-25-400-11-T	3/34						POA
FBB-50-200-11	3/34						POA
FBB-50-200-11-T	3/34						POA
FBB-50-400-11	3/34						POA
FBB-50-400-11-T	3/34						POA
FBB-6-200-7	3/34						POA
FBB-6-200-7-T	3/34						POA
FBB-6-400-7	3/34						POA
FBB-6-400-7-T	3/34						POA
FBB-70-200-13	3/34						POA
FBB-70-200-13-T	3/34						POA
FBB-70-400-13	3/34						POA
FBB-70-400-13-T	3/34						POA
FBB-95-200-13	3/34						POA
FBB-95-200-13-T	3/34						POA
FBB-95-400-13	3/34						POA
FBB-95-400-13-T	3/34						POA
FCT12010	3/42						149.39
FCT12012	3/42						149.39
FCT12014	3/42						149.39
FCT12016	3/42						149.39
FCT15010	3/42						182.61
FCT15012	3/42						182.61
FCT15014	3/42						182.61
FCT15016	3/42						182.61
FCT1610	3/42						33.22
FCT1612	3/42						33.22
FCT166	3/42						33.22
FCT168	3/42						33.22
FCT18512	3/42						290.96
FCT18514	3/42						290.96
FCT18516	3/42						290.96
FCT24012	3/42						334.45
FCT24014	3/42						334.45

Part No.	Page No.	Price £ (or price each £)					
		4501-4600	4601-4700	4701-4800	4801-4900	4901-5000	5001-5100
FCT24016	3/42						334.45
FCT2510	3/42						44.26
FCT2512	3/42						44.26
FCT256	3/42						44.26
FCT258	3/42						44.26
FCT30012	3/42						394.96
FCT30014	3/42						394.96
FCT30016	3/42						394.96
FCT3510	3/42						60.59
FCT3512	3/42						60.59
FCT356	3/42						60.59
FCT358	3/42						60.59
FCT40012	3/42						532.15
FCT40014	3/42						532.15
FCT40016	3/42						532.15
FCT5010	3/42						70.89
FCT5012	3/42						70.89
FCT506	3/42						70.89
FCT508	3/42						70.89
FCT7010	3/42						125.63
FCT7012	3/42						125.63
FCT7014	3/42						125.63
FCT7016	3/42						125.63
FCT708	3/42						125.63
FCT9510	3/42						210.15
FCT9512	3/42						210.15
FCT9514	3/42						210.15
FCT9516	3/42						210.15
FCT958	3/42						210.15
FGUN	4/48						18.28
FLINTS	4/48						4.86
FP015	2/16						4.16
FP020	2/16						4.16
FP025	2/16						4.16
FP030	2/16						4.16
FP035	2/16						4.16
FP040	2/16						4.16
FP045	2/16						4.16
FP050	2/16						4.16
FS005	2/22						378.30
G5	3/29						3.66
G6	3/29						4.06
GC205	2/7						19.81
GC215	2/7						19.81
GC220	2/7						19.81
GC225	2/7						19.81
GC230	2/7						19.81
GD015	2/12					(per 50)	156.46
GD020	2/12					(per 50)	156.46
GD025	2/12					(per 50)	156.46
GD030	2/12					(per 50)	156.46
GD040	2/12					(per 50)	156.46
GD045	2/12					(per 50)	156.46
GD050	2/12					(per 50)	156.46
GD861	2/13					(per 50)	162.05
GD871	2/13					(per 50)	162.05
GD872	2/13					(per 50)	162.05
GD876	2/13					(per 50)	162.05
GD881	2/13					(per 50)	162.05
GD886	2/13					(per 50)	162.05
GD887	2/13					(per 50)	162.05
HCPK1	4/47						72.33
HCPK2	4/47						67.77

Part number index - earthing & lightning protection

Alphanumeric product list

Part No.	Page No.	Price £ (or price each £)						Part No.	Page No.	Price £ (or price each £)					
		4501-4600	4601-4700	4701-4800	4801-4900	4901-5000	5001-5100			4501-4600	4601-4700	4701-4800	4801-4900	4901-5000	5001-5100
HCPK3	4/47						93.82	HW421	2/15						2.59
HCPK3-A	4/47						248.26	HW425-FU	2/15						2.59
HCPK3-B	4/47						260.68	HW430-FU	2/15						2.59
HCPK4	4/47						133.80	HW440-FU	2/15						2.59
HCPK4-A	4/47						135.07	HW441	2/15						2.59
HCPK5	4/47						136.36	HW445-FU	2/15						2.59
HCPK7	4/47						502.91	HW450-FU	2/15						2.59
HCPK8	4/47						548.63	HW871	2/15						2.84
HD100	3/43						100.79	HW872	2/15						2.84
HD120	4/48						73.61	HW886	2/15						2.84
HD150	4/48						73.61	HW887	2/15						2.84
HD200	3/43						100.79	IN005	3/39						8.64
HD300	3/43						100.79	IN013	3/39						6.41
HD35	4/48						73.61	IN020	3/39						3.86
HD400	3/43						100.79	IN030	3/39						4.49
HD50	4/48						73.61	IN040	3/39						6.39
HD500	3/43						100.79	IN060	3/39						10.30
HD600	3/43						100.79	IN070	3/39						15.27
HD70	4/48						73.61	JH100	3/27						1.58
HD700	3/43						275.99	LC101-FU	4/46						POA
HD800	3/43						100.79	LC102-FU	4/46						POA
HD95	4/48						73.61	LC103-FU	4/46						POA
HF015	2/17						2.03	LC104-FU	4/46						POA
HF020	2/17						2.03	LC105-FU	4/46						POA
HF025	2/17						2.03	LC106-FU	4/46						POA
HF030	2/17						2.03	LC107-FU	4/46						POA
HF040	2/17						2.03	LC108-FU	4/46						POA
HF045	2/17						2.03	LC109-FU	4/46						POA
HF176	2/17						2.59	LC110-FU	4/46						POA
HF191	2/17						2.59	LK004	3/38						22.68
HF320	2/17						10.81	LK004-T	3/38						23.82
HF325-FU	2/17						8.19	LK205	3/38						48.18
HF705	2/16						11.10	LK205-T	3/38						50.59
HF710	2/16						9.54	LK207-10	3/38						243.74
HF975	2/17						3.92	LK207-10-T	3/38						268.11
HMO05	3/27						POA	LK207-12	3/38						268.50
HMO10	3/27						POA	LK207-12-T	3/38						295.35
HM105	3/27						POA	LK207-14	3/38						295.54
HT010	3/43						1545.50	LK207-14-T	3/38						325.10
HT020	3/43						1019.93	LK207-16	3/38						325.09
HT030	3/43						1627.09	LK207-16-T	3/38						357.60
HT040	3/43						4369.08	LK207-18	3/38						357.42
HT050	3/43						3222.65	LK207-18-T	3/38						393.16
HW015-FU	2/15						2.59	LK207-20	3/38						393.73
HW020-FU	2/15						2.59	LK207-20-T	3/38						433.10
HW021	2/15						2.59	LK207-22	3/38						432.43
HW025-FU	2/15						2.59	LK207-22-T	3/38						475.67
HW030-FU	2/15						2.59	LK207-24	3/38						474.80
HW040-FU	2/15						2.59	LK207-24-T	3/38						522.27
HW041	2/15						2.59	LK207-26	3/38						521.22
HW045-FU	2/15						2.59	LK207-26-T	3/38						573.34
HW050-FU	2/15						2.59	LK207-28	3/38						573.06
HW315-FU	2/14						2.59	LK207-28-T	3/38						630.37
HW320-FU	2/14						2.59	LK207-30	3/38						628.82
HW321	2/14						2.59	LK207-30-T	3/38						691.70
HW325-FU	2/14						2.59	LK207-6	3/38						199.31
HW330-FU	2/14						2.59	LK207-6-T	3/38						219.24
HW340-FU	2/14						2.59	LK207-8	3/38						220.10
HW341	2/14						2.59	LK207-8-T	3/38						242.10
HW345-FU	2/14						2.59	LK243-10	3/37						218.38
HW350-FU	2/14						2.59	LK243-10-T	3/37						240.21
HW415-FU	2/15						2.59	LK243-12	3/37						240.75
HW420-FU	2/15						2.59	LK243-12-T	3/37						264.83

Part number index - earthing & lightning protection

Alphanumeric product list

Part No.	Page No.	Price £ (or price each £)					
		4501-4600	4601-4700	4701-4800	4801-4900	4901-5000	5001-5100
LK243-14	3/37						265.17
LK243-14-T	3/37						291.68
LK243-16	3/37						291.83
LK243-16-T	3/37						321.01
LK243-18	3/37						320.93
LK243-18-T	3/37						353.03
LK243-20	3/37						353.76
LK243-20-T	3/37						389.14
LK243-22	3/37						388.60
LK243-22-T	3/37						427.46
LK243-24	3/37						426.74
LK243-24-T	3/37						469.41
LK243-26	3/37						468.52
LK243-26-T	3/37						515.37
LK243-28	3/37						515.21
LK243-28-T	3/37						566.73
LK243-30	3/37						565.34
LK243-30-T	3/37						621.87
LK243-6	3/37						178.10
LK243-6-T	3/37						195.92
LK243-8	3/37						196.92
LK243-8-T	3/37						216.61
LK245-10	3/36						194.50
LK245-10-T	3/36						213.95
LK245-12	3/36						214.65
LK245-12-T	3/36						236.12
LK245-14	3/36						236.60
LK245-14-T	3/36						260.26
LK245-16	3/36						260.53
LK245-16-T	3/36						286.58
LK245-18	3/36						286.68
LK245-18-T	3/36						315.36
LK245-20	3/36						316.21
LK245-20-T	3/36						347.83
LK245-22	3/36						347.45
LK245-22-T	3/36						382.20
LK245-24	3/36						381.61
LK245-24-T	3/36						419.77
LK245-26	3/36						419.02
LK245-26-T	3/36						460.92
LK245-28	3/36						462.06
LK245-28-T	3/36						508.26
LK245-30	3/36						505.75
LK245-30-T	3/36						556.33
LK245-6	3/36						158.11
LK245-6-T	3/36						173.92
LK245-8	3/36						175.07
LK245-8-T	3/36						192.57
LO101	4/46						POA
LO102-FU	4/46						POA
LO103-FU	4/46						POA
LO104	4/46						POA
LO105	4/46						POA
LO106	4/46						POA
LO107	4/46						POA
LO108	4/46						POA
LO109	4/46						POA
LO110	4/46						POA
LS101-FU	4/46						POA
LS102-FU	4/46						POA
LS103-FU	4/46						POA
LS104-FU	4/46						POA
LS105-FU	4/46						POA

Part No.	Page No.	Price £ (or price each £)					
		4501-4600	4601-4700	4701-4800	4801-4900	4901-5000	5001-5100
LS106-FU	4/46						POA
LS107-FU	4/46						POA
LS108-FU	4/46						POA
LS109-FU	4/46						POA
LS110-FU	4/46						POA
MJ4	4/48						140.17
MJ5	4/48						244.12
NA005	2/22						0.23
NU165	2/21						0.07
NU166	2/21						0.33
NU167	2/21						0.41
NU170	2/21						0.50
NU367	2/21						1.29
NU370	2/21						2.39
PACK-A	4/48						6.57
PC100-FU	3/30						13.27
PC101	3/30						13.27
PC102	3/30						13.27
PC103	3/30						13.27
PC105	3/30						28.56
PC106	3/30						28.56
PC107	3/30						28.56
PC108	3/30						28.56
PC110	3/31						43.08
PC111	3/31						63.70
PC115-FU	3/31						32.58
PC116	3/31						54.82
PC120	3/31						32.58
PC121	3/31						54.82
PC125	3/31						29.03
PC126-FU	3/31						54.82
PC211	3/31						62.56
PC216	3/31						61.16
PC221	3/31						62.56
PE005	3/28	104.28	105.48	106.68	107.88	109.09	110.29
PE010	3/28	221.90	224.62	227.33	230.05	232.77	235.49
PE015	3/28	197.88	200.29	202.71	205.14	207.56	209.99
PE020	3/28	430.43	435.68	440.93	446.20	451.45	456.71
PE110	3/28	113.24	114.85	116.45	118.06	119.65	121.26
PE120	3/28	203.20	206.07	208.93	211.80	214.66	217.53
PF005	2/20						53.38
PF105	2/20						105.43
PL005	2/9						16.01
PL010	2/9						23.27
PS305	2/20						0.02
PS310	2/20						0.02
PT004	3/27						36.36
PT005	3/28						44.76
PT006	3/28						43.39
PT007	3/28						67.53
PT110	3/27						44.42
PT205	3/27						43.75
PT309-FU	3/27						43.75
RA015	2/7						14.85
RA025	2/7						23.41
RA030	2/7						33.02
RA040	2/7						42.62
RA050	2/7						61.81
RA080	2/7						10.34
RA085	2/7						20.03
RA215	2/7						27.82
RA225	2/7						50.82
RA230	2/7						75.32

Part number index - earthing & lightning protection

Alphanumeric product list

Part No.	Page No.	Price £ (or price each £)						Part No.	Page No.	Price £ (or price each £)																										
		4501-4600	4601-4700	4701-4800	4801-4900	4901-5000	5001-5100			4501-4600	4601-4700	4701-4800	4801-4900	4901-5000	5001-5100																					
RA240	2/7															92.80	RR2626	3/30																5.83		
RA250-FU	2/7																134.77	RR3232	3/30															6.30		
RA400-FU	2/7																17.56	RR3838	3/30																6.85	
RA402	2/7																29.59	RR812	3/30																4.90	
RA500	2/8																27.89	RS005	3/26																55.36	
RA600	2/8																46.74	RS005-KIT	3/26																POA	
RB005	3/25																9.88	RS011	3/26																69.20	
RB103	3/25																13.24	RS012	3/26																138.40	
RB105	3/24																13.45	RS016	3/26																101.72	
RB107	3/25																16.45	RS017	3/26																	203.45
RB110	3/24																16.65	RV005	2/21																0.69	
RB115	3/24																19.73	RV010	2/21																0.69	
RB116	3/25																19.46	RV105	2/21																0.39	
RB125	3/24																26.37	RV110	2/21																0.49	
RB125-UL	3/24																26.37	RX005	3/35																152.65	
RB126	3/25																26.00	S102-FU	4/44																0.85	
RB203	3/25																14.62	S103	4/44																	0.80
RB205-FU	3/24																14.83	S104	4/44																	1.16
RB210	3/24																18.07	S105	4/44																	1.20
RB213	3/25																17.85	S106	4/44																	1.20
RB215	3/24																21.78	S107	4/44																	1.20
RB216	3/25																21.52	S108	4/44																	1.20
RB217	3/25																22.17	S108A	4/44																	1.26
RB220-FU	3/24																25.78	S109	4/44																	1.20
RB223	3/25																25.10	S109A	4/44																	1.29
RB225	3/24																29.20	S110	4/44																	1.20
RB225-UL	3/24																29.20	S110A	4/44																	1.36
RB226	3/25																28.84	S111A	4/44																	1.42
RB235	3/24																36.25	SA105	2/22																	47.32
RB235-UL	3/24																36.25	SA115	2/22																	12.74
RB236	3/25																35.78	SC005-H	2/16																	6.42
RB305	3/24																19.03	SC015	2/16																	4.75
RB306	3/25																18.77	SC020	2/16																	4.75
RB310	3/24																23.56	SC025	2/16																	4.75
RB313	3/25																23.26	SC030	2/16																	4.75
RB315	3/24																28.13	SC035	2/16																	4.75
RB316	3/25																27.82	SC040	2/16																	4.75
RB317	3/25																27.82	SC045	2/16																	4.75
RB320-FU	3/24																33.70	SC050	2/16																	4.75
RB323	3/25																32.43	SC105-H	2/16																	9.35
RB325	3/24																37.45	SD003-H	2/7																	13.46
RB325-UL	3/24																37.45	SD005	2/8																	13.76
RB326	3/25																36.97	SD007	2/8																	13.76
RB335	3/24																46.74	SD105-H	2/7																	25.68
RB335-UL	3/24																46.74	SD115	2/8																	48.22
RB336	3/25																46.14	SD120	2/7																	56.16
RC010	3/26	38.70	39.38	40.06	40.74	41.41	42.09										42.09	SD155	2/8																	49.06
RC010-KIT	3/26																POA	SD160	2/8																49.06	
RC011	3/26	48.33	49.18	50.04	50.89	51.74	52.60										52.60	SD165	2/8																	49.06
RC012	3/26	96.66	98.37	100.08	101.78	103.49	105.20										105.20	SD305	2/8																	21.90
RC015	3/26	74.45	75.83	77.22	78.60	79.97	81.35										81.35	SD307	2/8																	21.90
RC015-KIT	3/26																POA	SK010	3/36																	177.79
RC016	3/26	93.06	94.78	96.51	98.24	99.96	101.69										101.69	SK020	3/36																	253.99
RC017	3/26	186.05	189.50	192.96	196.41	199.88	203.33										203.33	SK030	3/36																	438.35
RC16-087095	3/30																5.60	SK040	3/36																	738.52
RC20-087095	3/30																5.73	SM010	2/9																	7.51
RC25-087095	3/30																6.43	SP010	3/26																	2.99
RC25-087095	3/30																6.43	SP015	3/26																	3.46
RC32-087095	3/30																6.57	SR600	2/23																	376.72
RC40-087095	3/30																7.27	SR600UG	2/23																	113.02
RC812-0850	3/30																5.26	SR602	2/23																	602.75
RR1616	3/30																5.22	SR602UG	2/23																	180.83
RR2121	3/30																5.50	SR610	2/23																	2637.04

Part number index - earthing & lightning protection

Alphanumeric product list

Part No.	Page No.	Price £ (or price each £)					
		4501-4600	4601-4700	4701-4800	4801-4900	4901-5000	5001-5100
SR610UG	2/23						395.56
SR699	2/23						POA
SS1-14216	4/45						11.80
SS1-14225	4/45						11.80
SS1-14235	4/45						11.80
SS1-14250	4/45						11.80
SS1-14270	4/45						11.80
SS1-14295	4/45						11.80
SS1-17216	4/45						11.80
SS1-17225	4/45						11.80
SS1-17235	4/45						11.80
SS1-17250	4/45						11.80
SS1-17270	4/45						11.80
SS1-17295	4/45						11.80
SS140	2/20						0.92
SS145	2/20						1.19
SS150	2/20						1.88
SS155	2/20						2.68
SS160	2/20						0.64
SS165	2/20						0.61
SS2-14216	4/45						11.80
SS2-14225	4/45						11.80
SS2-14235	4/45						11.80
SS2-14250	4/45						11.80
SS2-14270	4/45						11.80
SS2-14295	4/45						11.80
SS2-17216	4/45						11.80
SS2-17225	4/45						11.80
SS2-17235	4/45						11.80
SS2-17250	4/45						11.80
SS2-17270	4/45						11.80
SS2-17295	4/45						11.80
SS635	2/20						2.65
SS640	2/20						2.84
SS650	2/20						6.00
SS655	2/20						6.80
ST010	3/26						2.61
ST015	3/26						2.94
ST100	3/24						3.78
ST107	3/25						3.78
ST200	3/24						1.38
ST207	3/25						9.98
ST300	3/24						2.93
ST307	3/25						13.18
STM1-FU	4/48						13.87
SW005	2/20						0.23
SW010	2/20						0.41
SW105	2/20						0.08
SW110	2/20						0.19
SW305	2/20						0.29
SW405	2/20						0.08
SX450	3/33						10.57
SX455	3/33						8.54
TA005	2/1						1.35
TA020	2/1						3.74
TA030	2/1						4.02
TA040	2/1						5.18
TA042	2/1						8.07
TA068	2/1						12.74
TA080	2/1						16.10
TA100	2/5						2.51
TA104	2/5						6.50
TA105	2/5						6.55

Part No.	Page No.	Price £ (or price each £)					
		4501-4600	4601-4700	4701-4800	4801-4900	4901-5000	5001-5100
TA110	2/5						6.55
TA115	2/5						6.55
TA120	2/5						6.55
TA125	2/5						6.55
TA130	2/5						6.55
TB100-FU	4/48						88.13
TC005	2/1	4.37	4.45	4.53	4.62	4.70	4.80
TC010	2/1	8.77	8.94	9.11	9.29	9.45	9.62
TC015	2/1	7.14	7.31	7.47	7.62	7.78	7.93
TC020	2/1	14.04	14.34	14.63	14.94	15.23	15.53
TC020/100	2/1	14.04	14.34	14.63	14.94	15.23	15.53
TC025	2/1	8.77	8.94	9.11	9.29	9.45	9.62
TC026	2/1	9.60	9.88	10.15	10.42	10.71	10.98
TC030	2/1	14.45	14.86	15.28	15.70	16.10	16.52
TC030/50	2/1	14.45	14.86	15.28	15.70	16.10	16.52
TC035	2/1	19.30	19.72	20.14	20.55	20.96	21.38
TC039	2/1	14.04	14.34	14.63	14.94	15.23	15.53
TC040	2/1	28.72	29.31	29.90	30.50	30.54	31.69
TC042	2/1	17.43	17.80	18.17	18.52	18.89	19.24
TC043	2/1	28.72	29.31	29.90	30.50	30.54	31.69
TC044	2/1	23.25	23.73	24.22	24.71	25.21	25.69
TC045	2/1	18.03	18.43	18.83	19.22	19.61	20.01
TC048	2/1	24.47	24.96	25.46	25.96	26.46	26.95
TC050	2/1	36.11	36.86	37.61	38.36	39.13	39.88
TC055	2/1	22.14	22.61	23.07	23.54	24.00	24.47
TC060-FU	2/1	36.89	37.65	38.41	39.18	39.95	40.71
TC065	2/1	46.69	47.13	47.58	48.03	48.46	48.91
TC066	2/1	31.04	31.69	32.34	32.99	33.63	34.28
TC067	2/1	23.25	23.73	24.22	24.71	25.21	25.69
TC068	2/1	48.93	49.96	50.98	52.02	53.05	54.08
TC069	2/1	51.37	52.46	53.53	54.62	55.70	56.78
TC070	2/1	28.72	29.31	29.90	30.50	31.09	31.69
TC071	2/1	46.59	47.57	48.54	49.52	50.51	51.48
TC075	2/1	38.79	39.61	40.44	41.25	42.07	42.89
TC078	2/1	48.48	49.49	50.50	51.51	52.52	53.53
TC080	2/1	57.37	58.56	59.75	60.94	62.13	63.32
TC082	2/1	61.17	62.45	63.73	65.02	66.30	67.59
TC090	2/1	66.90	68.30	69.69	71.07	72.46	73.84
TC100	2/5	5.06	5.14	5.22	5.31	5.39	5.49
TC105-FU	2/5	16.73	17.04	17.34	17.65	17.96	18.27
TC105/50	2/5	16.73	17.04	17.34	17.65	17.96	18.27
TC110	2/5	16.73	17.04	17.34	17.65	17.96	18.27
TC110/50	2/5	16.73	17.04	17.34	17.65	17.96	18.27
TC111-FU	2/6	16.73	17.04	17.34	17.65	17.96	18.27
TC111/50	2/6	16.73	17.04	17.34	17.65	17.96	18.27
TC115-FU	2/5	16.73	17.04	17.34	17.65	17.96	18.27
TC115/50	2/5	16.73	17.04	17.34	17.65	17.96	18.27
TC120-FU	2/5	16.73	17.04	17.34	17.65	17.96	18.27
TC120/50	2/5	16.73	17.04	17.34	17.65	17.96	18.27
TC125-FU	2/5	16.73	17.04	17.34	17.65	17.96	18.27
TC125/50	2/5	16.73	17.04	17.34	17.65	17.96	18.27
TC130	2/5	16.73	17.04	17.34	17.65	17.96	18.27
TC130/50	2/5	16.73	17.04	17.34	17.65	17.96	18.27
TC140-FU	2/5	31.40	32.00	32.60	33.21	33.81	34.42
TC145	2/5	64.60	65.79	66.97	68.16	69.35	70.54
TC225-FU	2/2	6.71	6.79	6.87	6.96	7.04	7.13
TC230	2/2	18.21	18.50	18.80	19.09	19.40	19.69
TC239	2/2	16.39	16.68	16.98	17.27	17.58	17.87
TC240	2/2	36.34	36.94	37.54	38.13	38.73	39.32
TC245	2/2	24.86	25.30	25.74	26.17	26.60	27.04
TC260	2/2	51.01	52.12	53.23	54.34	55.43	56.54
TC280	2/2	67.72	68.92	70.11	71.31	72.51	73.71
TC330	2/6	36.86	37.16	37.45	37.74	38.05	38.34

Part number index - earthing & lightning protection

Alphanumeric product list

Part No.	Page No.	Price £ (or price each £)					
		4501-4600	4601-4700	4701-4800	4801-4900	4901-5000	5001-5100
TC910	2/6	19.41	19.70	19.99	20.29	20.59	20.89
TC910/50	2/6	19.41	19.70	19.99	20.29	20.59	20.89
TC940	2/6	38.99	39.60	40.21	40.81	41.42	42.02
TC980	2/6	76.89	78.08	79.27	80.46	81.65	82.83
TD005	2/22						10.47
TK100	4/48						42.36
TK200	4/48						164.95
TP120-FU	2/22						9.34
WR165	2/21						0.28
WR167	2/21						0.28
WR170	2/21						0.28
WR175	2/21						0.28
WR365	2/21						0.28
WR367	2/21						0.57
WR370	2/21						0.57
WS365	2/22						0.57
WS367	2/22						0.57
WS370	2/22						0.77

Part number index - electronic systems protection

Alphanumeric product list

Part No.	Page No.	ABB order code	Price £
CME 16	5/59	7TCA085410R0002	43.50
CME 32	5/59	7TCA085410R0003	78.50
CME 4	5/59	7TCA085400R0001	18.50
CME 8	5/59	7TCA085400R0002	26.50
ESP 06D	5/52	7TCA085400R0079	73.50
ESP 06D/2BX	5/53	7TCA085400R0080	134.50
ESP 06D/2BX/I	5/53	7TCA085400R0276	134.50
ESP 06D/BX	5/53	7TCA085400R0081	83.00
ESP 06D/BX/I	5/53	7TCA085400R0275	83.00
ESP 06E	5/52	7TCA085400R0084	90.00
ESP 06H	5/52	7TCA085400R0003	128.00
ESP 06Q	5/55	7TCA085400R0087	267.00
ESP 110D	5/52	7TCA085400R0005	73.50
ESP 110D/2BX	5/53	7TCA085460R0343	134.50
ESP 110D/2BX/I	5/53	7TCA085460R0344	134.50
ESP 110D/BX	5/53	7TCA085400R0006	83.00
ESP 110D/BX/I	5/53	7TCA085460R0342	83.00
ESP 110E	5/52	7TCA085400R0007	90.00
ESP 110H	5/52	7TCA085400R0008	128.00
ESP 110Q	5/55	7TCA085400R0088	267.00
ESP 12 DC	5/50	7TCA085460R0073	267.00
ESP 120 D1	5/49	7TCA085460R0069	327.00
ESP 120 M1	5/50	7TCA085460R0070	310.00
ESP 120-16A	5/51	7TCA085460R0064	121.50
ESP 120-16A/BX	5/51	7TCA085460R0065	130.00
ESP 120-5A	5/51	7TCA085460R0066	106.00
ESP 120-5A/BX	5/51	7TCA085460R0067	117.50
ESP 120D-10A	5/51	7TCA085460R0328	133.00
ESP 120D-32A	5/51	7TCA085460R0327	149.50
ESP 120DS-10A	5/51	7TCA085460R0326	159.00
ESP 120DS-32A	5/51	7TCA085460R0325	175.50
ESP 15D	5/52	7TCA085400R0089	73.50
ESP 15D/2BX	5/53	7TCA085400R0090	134.50
ESP 15D/2BX/I	5/53	7TCA085400R0278	134.50
ESP 15D/BX	5/53	7TCA085400R0091	83.00
ESP 15D/BX/I	5/53	7TCA085400R0277	83.00
ESP 15E	5/52	7TCA085400R0095	90.00
ESP 15H	5/52	7TCA085400R0009	128.00
ESP 15Q	5/55	7TCA085400R0098	267.00
ESP 208 D1	5/49	7TCA085460R0077	663.00
ESP 208 D1/LCD	5/49	7TCA085460R0338	787.00
ESP 208 D1R	5/49	7TCA085460R0337	731.00
ESP 208 D1R/LCD	5/49	7TCA085460R0336	811.00
ESP 208 M1	5/50	7TCA085460R0078	600.00
ESP 24 DC	5/50	7TCA085460R0091	267.00
ESP 240 D1	5/49	7TCA085460R0086	311.00
ESP 240 M1	5/50	7TCA085460R0089	295.00
ESP 240-16A	5/51	7TCA085460R0080	121.50
ESP 240-16A/BX	5/51	7TCA085460R0081	130.00
ESP 240-5A	5/51	7TCA085460R0083	106.00
ESP 240-5A/BX	5/51	7TCA085460R0084	117.50
ESP 240/I/TNC	5/49	7TCA085460R0018	334.00
ESP 240/I/TNS	5/49	7TCA085460R0019	621.00
ESP 240/I/TT	5/49	7TCA085460R0020	666.00
ESP 240/III/TNC	5/49	7TCA085460R0021	192.00
ESP 240/III/TNS	5/49	7TCA085460R0022	334.00
ESP 240/III/TT	5/49	7TCA085460R0023	422.00
ESP 240D-10A	5/51	7TCA085460R0323	131.50
ESP 240D-32A	5/51	7TCA085460R0322	147.50
ESP 240DS-10A	5/51	7TCA085460R0317	157.50
ESP 240DS-32A	5/51	7TCA085460R0318	172.50
ESP 277 D1	5/49	7TCA085460R0096	339.00
ESP 277 M1	5/50	7TCA085460R0097	316.00
ESP 277-16A	5/51	7TCA085460R0093	128.00

Part No.	Page No.	ABB order code	Price £
ESP 277-16A/BX	5/51	7TCA085460R0094	138.00
ESP 277-5A	5/51	7TCA085460R0095	112.50
ESP 277-5A/BX	5/51	7TCA085460R0348	124.00
ESP 277D-10A	5/51	7TCA085460R0319	137.00
ESP 277D-32A	5/51	7TCA085460R0320	153.50
ESP 277DS-10A	5/51	7TCA085460R0321	163.00
ESP 277DS-32A	5/51	7TCA085460R0324	179.50
ESP 30D	5/52	7TCA085400R0099	73.50
ESP 30D/2BX	5/53	7TCA085400R0100	134.50
ESP 30D/2BX/I	5/53	7TCA085400R0273	134.50
ESP 30D/BX	5/53	7TCA085400R0101	83.00
ESP 30D/BX/I	5/53	7TCA085400R0274	83.00
ESP 30E	5/52	7TCA085400R0104	90.00
ESP 30H	5/52	7TCA085400R0011	128.00
ESP 30Q	5/55	7TCA085400R0107	267.00
ESP 36 DC	5/50	7TCA085460R0100	267.00
ESP 415 D1	5/49	7TCA085460R0105	618.00
ESP 415 D1/LCD	5/49	7TCA085460R0106	742.00
ESP 415 D1R	5/49	7TCA085460R0107	687.00
ESP 415 D1R/LCD	5/49	7TCA085460R0108	766.00
ESP 415 M1	5/50	7TCA085460R0112	588.00
ESP 415 M1R	5/50	7TCA085460R0115	656.00
ESP 415 M2	5/50	7TCA085460R0119	1142.00
ESP 415 M2R	5/50	7TCA085460R0123	1212.00
ESP 415 M4	5/50	7TCA085460R0124	2184.00
ESP 415 M4R	5/50	7TCA085460R0126	2255.00
ESP 415/I/TNC	5/49	7TCA085460R0024	467.00
ESP 415/I/TNS	5/49	7TCA085460R0101	621.00
ESP 415/I/TT	5/49	7TCA085460R0102	728.00
ESP 415/III/TNC	5/49	7TCA085460R0025	323.00
ESP 415/III/TNS	5/49	7TCA085460R0103	398.00
ESP 415/III/TT	5/49	7TCA085460R0026	483.00
ESP 48 DC	5/50	7TCA085460R0142	267.00
ESP 480 D1	5/49	7TCA085460R0133	673.00
ESP 480 D1/LCD	5/49	7TCA085460R0134	799.00
ESP 480 D1R	5/49	7TCA085460R0339	742.00
ESP 480 D1R/LCD	5/49	7TCA085460R0135	821.00
ESP 480 M1	5/50	7TCA085460R0136	627.00
ESP 480 M1R	5/50	7TCA085460R0137	696.00
ESP 480 M2	5/50	7TCA085460R0138	1153.00
ESP 480 M2R	5/50	7TCA085460R0139	1217.00
ESP 480 M4	5/50	7TCA085460R0140	2211.00
ESP 480 M4R	5/50	7TCA085460R0340	2276.00
ESP 50D	5/52	7TCA085400R0109	73.50
ESP 50D/2BX	5/53	7TCA085400R0111	134.50
ESP 50D/2BX/I	5/53	7TCA085460R0341	134.50
ESP 50D/BX	5/53	7TCA085400R0113	83.00
ESP 50D/BX/I	5/53	7TCA085400R0272	83.00
ESP 50E	5/52	7TCA085400R0116	90.00
ESP 50H	5/52	7TCA085400R0012	128.00
ESP 50Q	5/55	7TCA085400R0118	267.00
ESP 690/12.5/WT	5/57	7TCA085460R0027	390.00
ESP 690/25/WT	5/57	7TCA085460R0028	503.00
ESP Cat-5e	5/56	7TCA085400R0017	197.50
ESP Cat-5e/PoE	5/56	7TCA085400R0021	211.00
ESP Cat-6	5/56	7TCA085400R0023	232.00
ESP Cat-6/PoE	5/56	7TCA085400R0024	259.00
ESP CAT5e/UTP-1	5/60	7TCA085400R0022	12.00
ESP CAT6/STP-2	5/60	7TCA085400R0231	13.00
ESP CATV/F	5/58	7TCA085400R0122	90.00
ESP CCTV/B	5/58	7TCA085400R0123	90.00
ESP CCTV/B-15V	5/58	7TCA085400R0124	95.00
ESP CCTV/B-30V	5/58	7TCA085400R0125	95.00
ESP CCTV/B-50V	5/58	7TCA085400R0126	95.00

Part number index - electronic systems protection

Alphanumeric product list

Part No.	Page No.	ABB order code	Price £
ESP CCTV/T	5/58	7TCA085400R0129	90.00
ESP CCTV/T-15V	5/58	7TCA085400R0270	95.00
ESP CCTV/T-30V	5/58	7TCA085400R0271	95.00
ESP CCTV/T-50V	5/58	7TCA085400R0027	95.00
ESP CE10	5/57	7TCA085460R0030	8.25
ESP CE10	5/61	7TCA085460R0030	8.25
ESP CE13	5/57	7TCA085460R0031	9.00
ESP CE13	5/61	7TCA085460R0031	9.00
ESP CE7	5/57	7TCA085460R0032	7.25
ESP CE7	5/61	7TCA085460R0032	7.25
ESP CE9	5/57	7TCA085460R0033	7.75
ESP CE9	5/61	7TCA085460R0033	7.75
ESP DC1000/12.5/PV	5/57	7TCA085460R0146	560.00
ESP DC550/12.5/PV	5/57	7TCA085460R0147	390.00
ESP ISDN/RJ45-4/8	5/56	7TCA085460R0170	117.50
ESP ISDN/RJ45-8/8	5/56	7TCA085460R0171	149.50
ESP K10T1	5/56	7TCA085400R0130	176.00
ESP K10T1/PTC	5/56	7TCA085400R0131	192.00
ESP K10T2	5/56	7TCA085400R0133	234.00
ESP KE10	5/55	7TCA085400R0134	12.50
ESP KE10	5/56	7TCA085400R0134	12.50
ESP KS06	5/55	7TCA085400R0029	41.00
ESP KS15	5/55	7TCA085400R0030	41.00
ESP KS30	5/55	7TCA085400R0032	41.00
ESP KS50	5/55	7TCA085400R0033	41.00
ESP KT1	5/56	7TCA085400R0135	20.50
ESP KT1/PTC	5/56	7TCA085400R0034	23.50
ESP KT2	5/56	7TCA085400R0136	28.50
ESP LA-15/15	5/56	7TCA085400R0137	68.50
ESP LA-25/25	5/56	7TCA085400R0138	70.00
ESP LA-5/25	5/56	7TCA085400R0139	46.50
ESP LA-9/9	5/56	7TCA085400R0140	60.00
ESP LB-15/15	5/56	7TCA085400R0141	68.50
ESP LB-25/25	5/56	7TCA085400R0142	70.00
ESP LB-9/9	5/56	7TCA085400R0143	60.00
ESP LN	5/57	7TCA085400R0145	91.00
ESP LN-16/16	5/57	7TCA085400R0146	1273.00
ESP LN-4	5/57	7TCA085400R0147	444.00
ESP LN-8	5/57	7TCA085400R0148	749.00
ESP LN-8/16	5/57	7TCA085400R0149	844.00
ESP MATV/F	5/58	7TCA085450R0000	105.00
ESP MC	5/51	7TCA085430R0003	273.00
ESP MC/19BK	5/51	7TCA085460R0034	12.00
ESP MC/Cat-5e	5/51	7TCA085430R0004	408.00
ESP MC/TN/RJ11	5/51	7TCA085430R0005	319.00
ESP PCB/06D	5/55	7TCA085400R0038	66.00
ESP PCB/06E	5/55	7TCA085400R0039	80.00
ESP PCB/110D	5/55	7TCA085400R0040	66.00
ESP PCB/110E	5/55	7TCA085400R0041	80.00
ESP PCB/15D	5/55	7TCA085400R0042	66.00
ESP PCB/15E	5/55	7TCA085400R0153	80.00
ESP PCB/30D	5/55	7TCA085400R0154	66.00
ESP PCB/30E	5/55	7TCA085400R0043	80.00
ESP PCB/50D	5/55	7TCA085400R0155	66.00
ESP PCB/50E	5/55	7TCA085400R0156	80.00
ESP PCB/TN	5/55	7TCA085400R0157	66.00
ESP PTE002	5/61	7TCA085400R0055	POA
ESP RDU D1R/208	5/59	7TCA085400R0282	120.00
ESP RDU D1R/415	5/59	7TCA085460R0055	120.00
ESP RDU D1R/480	5/59	7TCA085400R0283	120.00
ESP RDU D1R/LCD/208	5/59	7TCA085460R0345	200.00
ESP RDU D1R/LCD/415	5/59	7TCA085460R0346	200.00
ESP RDU D1R/LCD/480	5/59	7TCA085460R0347	200.00
ESP RDU-SEAL	5/59	7TCA085460R0150	3.50

Part No.	Page No.	ABB order code	Price £
ESP RDU/415M1R	5/59	7TCA085460R0151	71.00
ESP RDU/415M2R	5/59	7TCA085460R0152	71.00
ESP RDU/415M4R	5/59	7TCA085460R0334	71.00
ESP RDU/480M1R	5/59	7TCA085460R0296	71.00
ESP RDU/480M2R	5/59	7TCA085400R0281	71.00
ESP RDU/480M4R	5/59	7TCA085400R0239	71.00
ESP RF 111121	5/58	7TCA085450R0002	86.50
ESP RF 111221	5/58	7TCA085450R0003	86.50
ESP RF 111321	5/58	7TCA085450R0004	86.50
ESP RF 111421	5/58	7TCA085450R0005	86.50
ESP RF 111521	5/58	7TCA085450R0006	86.50
ESP RF 111621	5/58	7TCA085450R0057	86.50
ESP RF 111A11	5/58	7TCA085450R0007	113.50
ESP RF 441121	5/58	7TCA085450R0010	78.50
ESP RF 441221	5/58	7TCA085450R0011	78.50
ESP RF 441321	5/58	7TCA085450R0012	78.50
ESP RF 441421	5/58	7TCA085450R0058	78.50
ESP RF 441521	5/58	7TCA085450R0059	78.50
ESP RF 441621	5/58	7TCA085450R0013	78.50
ESP RF 441A11	5/58	7TCA085450R0014	106.00
ESP RF AA1121	5/58	7TCA085450R0060	113.50
ESP RF AA1221	5/58	7TCA085450R0015	113.50
ESP RF AA1321	5/58	7TCA085400R0286	113.50
ESP RF AA1421	5/58	7TCA085450R0061	113.50
ESP RF AA1521	5/58	7TCA085450R0062	113.50
ESP RF AA1621	5/58	7TCA085400R0287	113.50
ESP RF AA1A11	5/58	7TCA085450R0016	141.00
ESP RF BK1	5/61	7TCA085450R0017	19.50
ESP RF BK2	5/61	7TCA085450R0018	22.50
ESP RF BK3	5/61	7TCA085450R0020	24.50
ESP RF BK4	5/61	7TCA085450R0046	24.50
ESP RF GDT-1	5/61	7TCA085450R0019	9.00
ESP RF GDT-2	5/61	7TCA085450R0052	9.00
ESP RF GDT-3	5/61	7TCA085450R0053	9.00
ESP RF GDT-4	5/61	7TCA085450R0054	9.00
ESP RF GDT-5	5/61	7TCA085450R0055	9.00
ESP RF GDT-6	5/61	7TCA085450R0056	9.00
ESP RF GDT-A	5/61	7TCA085450R0029	9.00
ESP RLA HD-1	5/49	7TCA085460R0304	27.50
ESP RLA HD-1	5/60	7TCA085460R0304	27.50
ESP RLA HD-2	5/49	7TCA085460R0305	31.50
ESP RLA HD-2	5/60	7TCA085460R0305	31.50
ESP RLA HD-4	5/49	7TCA085460R0156	38.50
ESP RLA HD-4	5/60	7TCA085460R0156	38.50
ESP RLA-1	5/50	7TCA085460R0153	14.50
ESP RLA-1	5/60	7TCA085460R0153	14.50
ESP RLA-2	5/50	7TCA085460R0154	16.00
ESP RLA-2	5/60	7TCA085460R0154	16.00
ESP RLA-4	5/50	7TCA085460R0155	18.00
ESP RLA-4	5/60	7TCA085460R0155	18.00
ESP RS485	5/55	7TCA085400R0191	95.00
ESP RS485Q	5/55	7TCA085400R0192	288.00
ESP RTD	5/55	7TCA085460R0157	94.00
ESP RTDQ	5/55	7TCA085400R0158	293.00
ESP RTDQ	5/55	7TCA085400R0158	293.00
ESP SL RS485	5/55	7TCA085400R0193	104.50
ESP SL RS485/B	5/60	7TCA085400R0262	45.00
ESP SL RTD	5/55	7TCA085400R0232	99.00
ESP SL/3W/B	5/60	7TCA085400R0260	36.00
ESP SL/B	5/60	7TCA085400R0194	33.50
ESP SL//B	5/60	7TCA085400R0261	45.00
ESP SL06	5/54	7TCA085400R0058	93.50
ESP SL06/3W	5/54	7TCA085400R0238	99.00
ESP SL06/3W/M	5/60	7TCA085400R0244	70.50

Part number index - electronic systems protection

Alphanumeric product list

Part No.	Page No.	ABB order code	Price £
ESP SL06/I	5/54	7TCA085400R0265	104.50
ESP SL06/M	5/60	7TCA085400R0243	67.00
ESP SL06L	5/54	7TCA085400R0060	99.00
ESP SL06L/I	5/54	7TCA085400R0265	110.00
ESP SL06L/M	5/60	7TCA085400R0240	72.50
ESP SL110	5/54	7TCA085400R0061	93.50
ESP SL110/3W	5/54	7TCA085400R0266	99.00
ESP SL110/3W/M	5/60	7TCA085400R0246	70.50
ESP SL110/I	5/54	7TCA085400R0279	104.50
ESP SL110/M	5/60	7TCA085400R0245	67.00
ESP SL110L	5/54	7TCA085400R0062	99.00
ESP SL110L/I	5/54	7TCA085400R0284	110.00
ESP SL110L/M	5/60	7TCA085400R0248	72.50
ESP SL15	5/54	7TCA085460R0063	93.50
ESP SL15/3W	5/54	7TCA085400R0269	99.00
ESP SL15/3W/M	5/60	7TCA085400R0247	70.50
ESP SL15/I	5/54	7TCA085400R0264	104.50
ESP SL15/M	5/60	7TCA085400R0198	67.00
ESP SL15L	5/54	7TCA085460R0058	99.00
ESP SL15L/I	5/54	7TCA085400R0064	110.00
ESP SL15L/M	5/60	7TCA085400R0249	72.50
ESP SL15X	5/54	7TCA085400R0065	99.00
ESP SL15X/I	5/54	7TCA085400R0233	110.00
ESP SL15X/M	5/60	7TCA085400R0250	70.50
ESP SL15XL	5/54	7TCA085400R0066	104.50
ESP SL15XL/I	5/54	7TCA085400R0235	115.50
ESP SL15XL/M	5/60	7TCA085400R0257	76.00
ESP SL30	5/54	7TCA085400R0067	93.50
ESP SL30/3W	5/54	7TCA085400R0268	99.00
ESP SL30/3W/M	5/60	7TCA085400R0251	70.50
ESP SL30/I	5/54	7TCA085400R0068	104.50
ESP SL30/M	5/60	7TCA085400R0197	67.00
ESP SL30L	5/54	7TCA085400R0069	99.00
ESP SL30L/4-20	5/54	7TCA085400R0070	104.50
ESP SL30L/4-20/I	5/54	7TCA085400R0237	115.50
ESP SL30L/4-20/M	5/60	7TCA085400R0164	78.00
ESP SL30L/I	5/54	7TCA085400R0234	110.00
ESP SL30L/M	5/60	7TCA085400R0199	72.50
ESP SL30X	5/54	7TCA085400R0071	99.00
ESP SL30X/I	5/54	7TCA085400R0196	110.00
ESP SL30X/M	5/60	7TCA085400R0252	70.50
ESP SL30XL	5/54	7TCA085400R0073	104.50
ESP SL30XL/I	5/54	7TCA085400R0236	115.50
ESP SL30XL/M	5/60	7TCA085400R0253	76.00
ESP SL50	5/54	7TCA085400R0074	93.50
ESP SL50/3W	5/54	7TCA085400R0267	99.00
ESP SL50/3W/M	5/60	7TCA085400R0255	70.50
ESP SL50/I	5/54	7TCA085400R0075	104.50
ESP SL50/M	5/60	7TCA085400R0254	67.00
ESP SL50L	5/54	7TCA085400R0076	99.00
ESP SL50L/I	5/54	7TCA085400R0201	110.00
ESP SL50L/M	5/60	7TCA085400R0256	72.50
ESP SLRS485/M	5/60	7TCA085400R0259	67.00
ESP SLRTD/B	5/60	7TCA085400R0263	36.00
ESP SLRTD/M	5/60	7TCA085400R0258	70.50
ESP SLTN	5/54	7TCA085400R0195	93.50
ESP SLTN/M	5/60	7TCA085400R0241	67.00
ESP SLX/B	5/60	7TCA085400R0242	36.00
ESP SLX/I/B	5/60	7TCA085400R0285	47.00
ESP SMATV/F	5/58	7TCA085450R0026	100.50
ESP SSI/120AC	5/57	7TCA085460R0059	293.00
ESP SSI/140AC	5/57	7TCA085460R0060	293.00
ESP SSI/B	5/57	7TCA085400R0166	30.00
ESP SSI/M	5/57	7TCA085400R0168	60.00

Part No.	Page No.	ABB order code	Price £
ESP TN	5/52	7TCA085400R0171	73.50
ESP TN/2BX	5/53	7TCA085400R0172	134.50
ESP TN/2BX/I	5/53	7TCA085400R0173	134.50
ESP TN/BX	5/53	7TCA085400R0175	83.00
ESP TN/BX/I	5/53	7TCA085400R0176	83.00
ESP TN/JP	5/56	7TCA085400R0177	111.00
ESP TN/RJ11-2/6	5/56	7TCA085400R0178	83.00
ESP TN/RJ11-4/6	5/56	7TCA085400R0179	99.00
ESP TN/RJ11-6/6	5/56	7TCA085400R0180	111.00
ESP TNQ	5/55	7TCA085400R0183	267.00
ESP TV/EURO	5/58	7TCA085450R0027	94.00
ESP TV/F	5/58	7TCA085450R0028	90.00
WBX 16/2/G	5/59	7TCA085410R0020	197.50
WBX 2/G	5/59	7TCA085410R0022	28.00
WBX 3	5/59	7TCA085410R0023	33.50
WBX 3/G	5/59	7TCA085410R0024	33.50
WBX 4	5/59	7TCA085410R0027	40.00
WBX 4/GS	5/59	7TCA085410R0028	44.50
WBX 8	5/59	7TCA085410R0030	57.50
WBX 8/GS	5/59	7TCA085410R0031	66.00
WBX D4	5/59	7TCA085410R0032	78.00
WBX D8	5/59	7TCA085410R0033	102.50
WBX M2	5/59	7TCA085410R0034	149.50
WBX M4	5/59	7TCA085410R0035	190.00
WBX SLQ	5/59	7TCA085410R0037	68.00
WBX SLQ/G	5/59	7TCA085410R0036	73.50

For your notes

A series of horizontal dotted lines for taking notes, spanning most of the page width.

Contact us

Furse

Wilford Road

Nottingham NG2 1EB

United Kingdom

Switchboard: +44 (0) 115 964 3700

Fax: +44 (0) 115 986 0538

Sales Tel: +44 (0) 115 964 3800

Sales Fax: +44 (0) 115 986 0071

National Tel: +44 (0) 333 999 9900

National Fax: +44 (0) 333 999 9901

Email: enquiry@furse.com

www.furse.com

Note: We reserve the right to make technical changes or modify the contents of this document without prior notice. With regard to purchase orders, the agreed particulars shall prevail. ABB AG does not accept any responsibility whatsoever for potential errors or possible lack of information in this document.

We reserve all rights in this document and in the subject matter and illustrations contained therein. Any reproduction, disclosure to third parties or utilization of its contents - in whole or in parts - is forbidden without prior written consent of ABB AG.

Copyright © 2015 ABB AG

All rights reserved