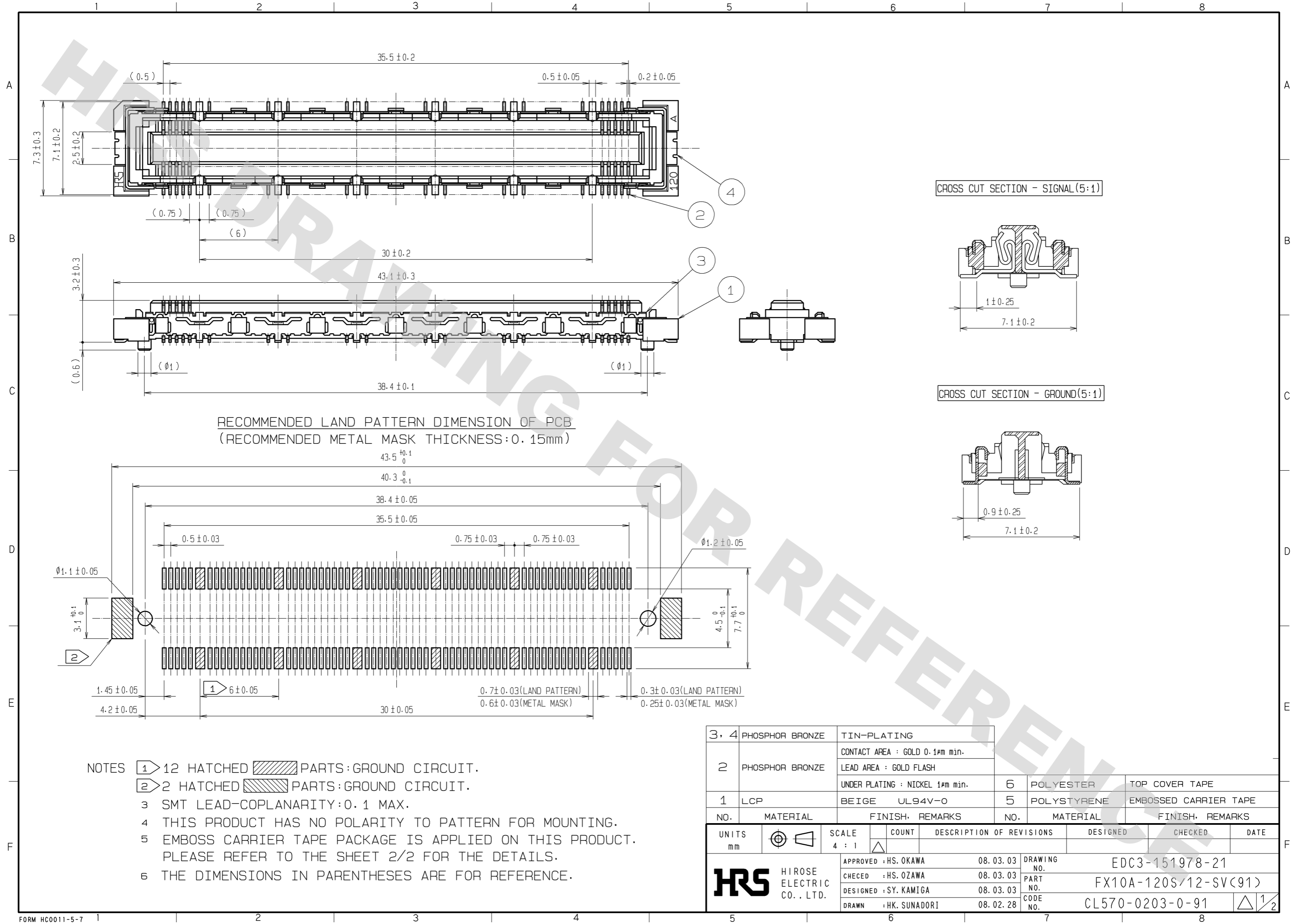


DRAWING FOR REFERENCE: This is subject to change without notice  
08/11/2012

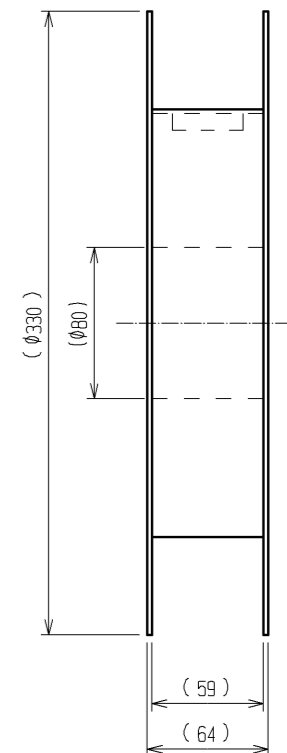
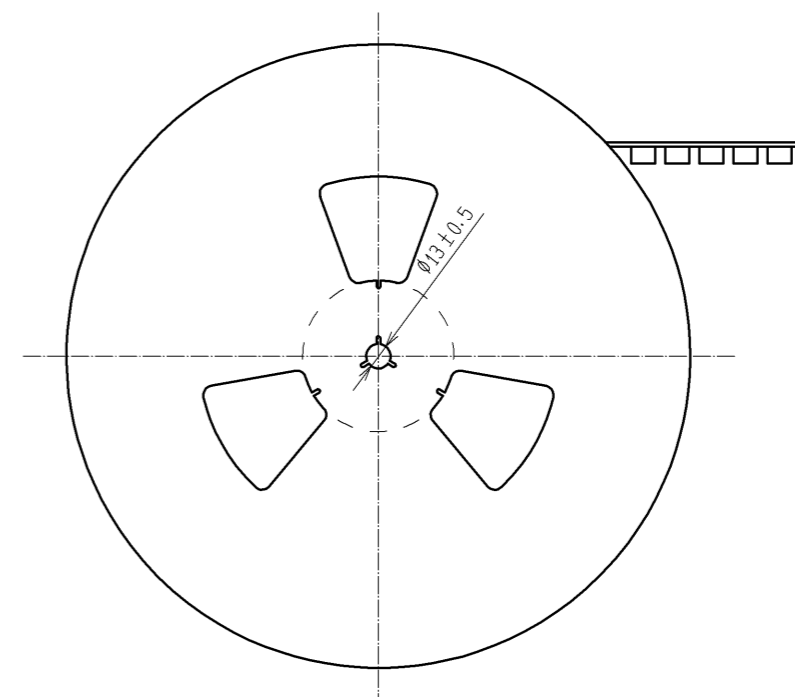
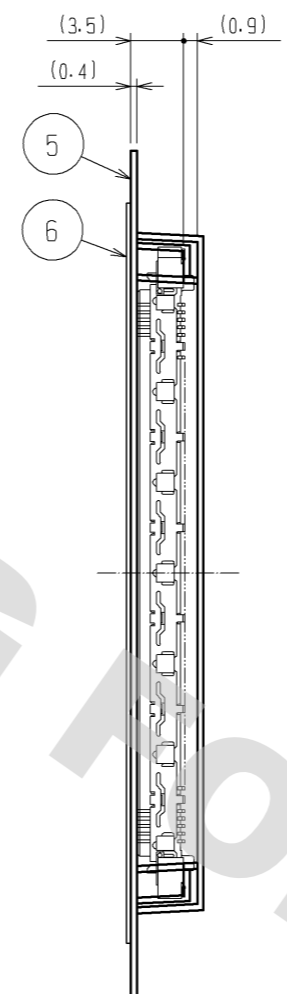
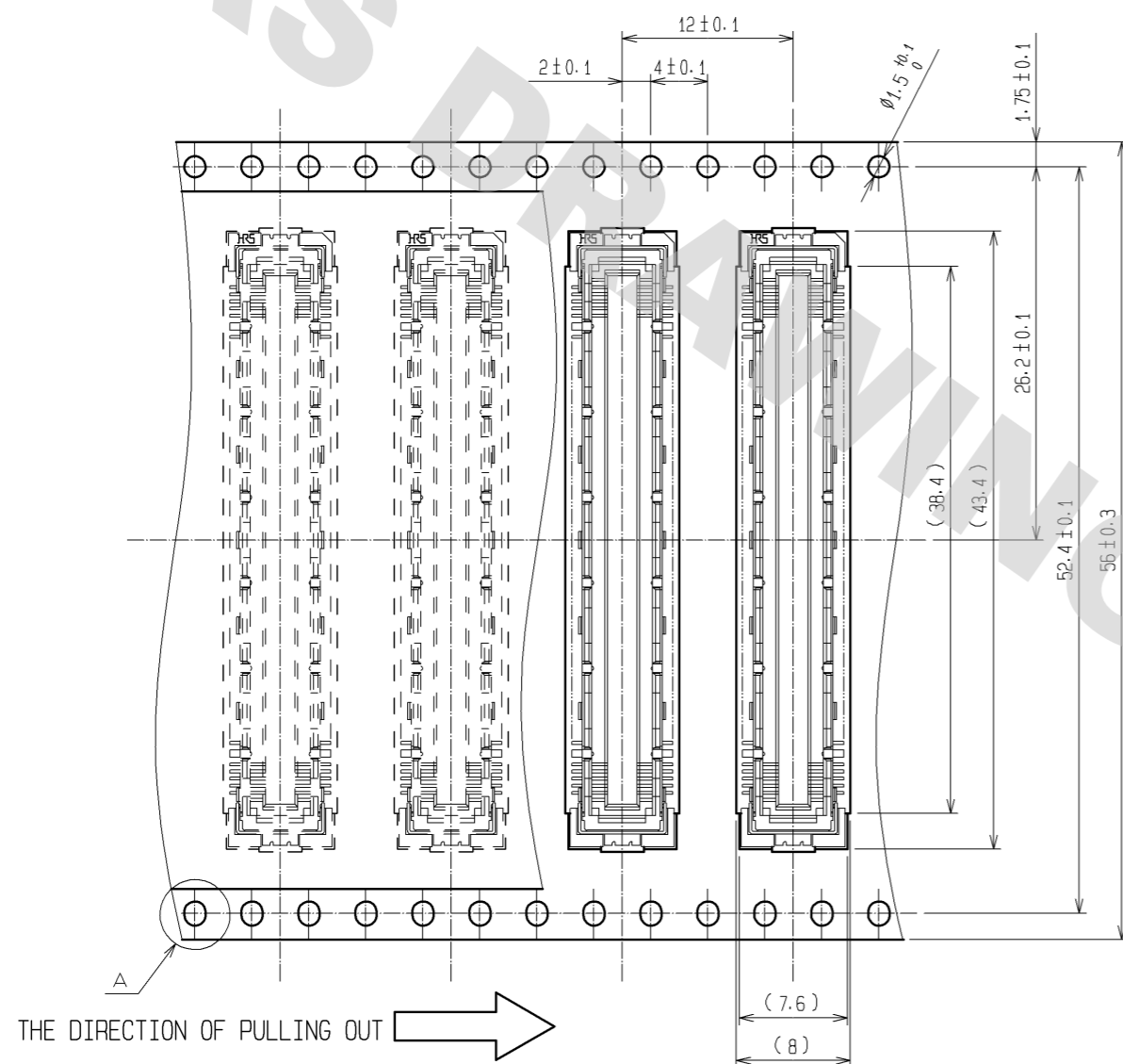


- NOTES
- ① 12 HATCHED PARTS: GROUND CIRCUIT.
  - ② 2 HATCHED PARTS: GROUND CIRCUIT.
  - 3 SMT LEAD-COPLANARITY: 0.1 MAX.
  - 4 THIS PRODUCT HAS NO POLARITY TO PATTERN FOR MOUNTING.
  - 5 EMBOSS CARRIER TAPE PACKAGE IS APPLIED ON THIS PRODUCT. PLEASE REFER TO THE SHEET 2/2 FOR THE DETAILS.
  - 6 THE DIMENSIONS IN PARENTHESES ARE FOR REFERENCE.

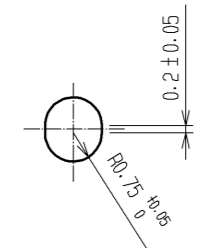
3, 4	PHOSPHOR BRONZE	TIN-PLATING			
		CONTACT AREA : GOLD 0.1µm min.			
2	PHOSPHOR BRONZE	LEAD AREA : GOLD FLASH			
		UNDER PLATING : NICKEL 1µm min.	6	POLYESTER	TOP COVER TAPE
1	LCP	BEIGE UL94V-0	5	POLYSTYRENE	EMBOSSED CARRIER TAPE
NO.	MATERIAL	FINISH, REMARKS	NO.	MATERIAL	FINISH, REMARKS
UNITS mm	⊕	SCALE 4 : 1	COUNT △	DESCRIPTION OF REVISIONS	DESIGNED CHECKED DATE
APPROVED : HS. OKAWA		08.03.03	DRAWING NO. EDC3-151978-21		
CHECKED : HS. OZAWA		08.03.03	PART NO. FX10A-120S/12-SV(91)		
DESIGNED : SY. KAMIGA		08.03.03	CODE NO. CL570-0203-0-91		
DRAWN : HK. SUNADORI		08.02.28	△ 1/2		

DRAWING FOR PACKING(2:1)

REELED DIMENSION(Free)



A (5:1)



- NOTES 1 1REEL:1000 CONNECTORS.  
 2 MINIMUM 10 COMPARTMENTS FROM BOTH REEL ENDS REMAIN EMPTY.  
 3 THIS PRODUCT HAS NO POLAVITY TO TAPE AND REEL PACKAGING.  
 4 THE DIMENSIONS IN PARENTHESES ARE FOR REFERENCE.

<b>HRS</b>	DRAWING NO.	EDC3-151978-21
	PART NO.	FX10A-120S/12-SV(91)
	CODE NO.	CL570-0203-0-91
		△ 2/2

DRAWING FOR REFERENCE: This is subject to change without notice  
08/11/2012