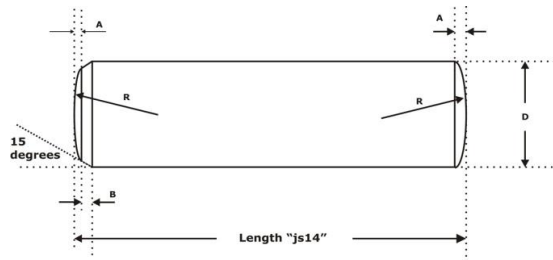


Datasheet

# Steel Parallel Dowel Pin

RS Stock No: 270524

**Product description:**

Through Hardened Precision Ground Engineers Dowels to DIN6325 are supplied with an interference fit “m6” diameter tolerance and a “js14” length tolerance. These parts are configured to have a radius at one end and a ‘crown’ at the other.

Used to retain parts in fixed position, maintain alignment between different parts or to join different components together.

**Product standard:**

DIN 6325

**Material:****Alloy Steel**

1.3505 (100Cr6) Hardened to HRC58-62

**Finish:**

Ground



ENGLISH

Part Number	Size	Diameter Tol.	Crown	Chamfer	Conical	Radius
		D	A	B	C	R
	mm	mm	mm	mm	mm	mm
270524	2.5 x 10	2.502/2.508	0.25	0.7	0.4	2.5
270530	2.5 x 12	2.502/2.508	0.25	0.7	0.4	2.5
270546	2.5 x 20	2.502/2.508	0.25	0.7	0.4	2.5
270552	3 x 12	3.002/3.008	0.3	0.8	0.45	3
270568	3 x 20	3.002/3.008	0.3	0.8	0.45	3
270574	3 x 24	3.002/3.008	0.3	0.8	0.45	3
270580	4 x 20	4.004/4.012	0.4	1	0.6	4
270596	4 x 24	4.004/4.012	0.4	1	0.6	4
270603	4 x 32	4.004/4.012	0.4	1	0.6	4
270619	5 x 20	5.004/5.012	0.5	1.2	0.75	5
270625	5 x 28	5.004/5.012	0.5	1.2	0.75	5
270631	5 x 36	5.004/5.012	0.5	1.2	0.75	5
270647	6 x 24	6.004/6.012	0.6	1.5	0.9	6
270653	6 x 32	6.004/6.012	0.6	1.5	0.9	6
270669	6 x 40	6.004/6.012	0.6	1.5	0.9	6
270675	8 x 24	8.006/8.015	0.8	1.8	1.2	8
270681	8 x 40	8.006/8.015	0.8	1.8	1.2	8
270697	8 x 50	8.006/8.015	0.8	1.8	1.2	8
270704	10 x 24	10.006/10.015	1	2	1.5	10
270710	10 x 40	10.006/10.015	1	2	1.5	10
270726	10 x 50	10.006/10.015	1	2	1.5	10