

Data sheet SG-Series

Available from 35 up to 300mm², bolt size M6 up to M16.

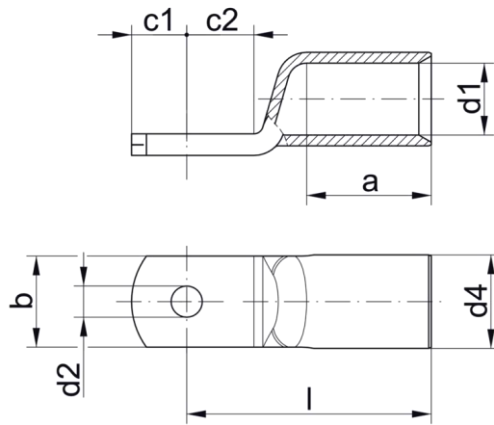


Figure similar

Drawing

A: Dimensions:

Part No.	Cross section class 2 mm ²	Cross section class 5 mm ²	Stud hole	Dimensions mm								Weight 100 pcs/ ~kg	Packing unit/pcs
				d1	a	b	d2	d4	c1	c2	l		
5SG6	35	35	M6	8,5	17	15	6,5	12	7,5	7,5	32	1,78	25
6SG6	50	50	M6	10	19	15	6,5	14	10	10	37	2,95	25
6SG8			M8	10	19	17	8,5	14	10	10	37	2,82	25
6SG10			M10	10	19	19	10,5	14	11,5	12	39	3,08	25
7SG6	70	70	M6	12	21	17	6,5	16,5	10	10	43	4,22	25
7SG8			M8	12	21	17	8,5	16,5	10	10	43	4,1	25
7SG10			M10	12	21	19	10,5	16,5	11,5	12	44	4,45	25
7SG12			M12	12	21	19	13	16,5	13	13	46	4,22	25
8SG6	95	95	M6	13,5	25	19	6,5	18	11,5	12	48	5,49	25
8SG8			M8	13,5	25	19	8,5	18	11,5	12	48	5,46	25
8SG10			M10	13,5	25	19	10,5	18	11,5	12	48	5,13	25
8SG12			M12	13,5	25	19	13	18	13	13	49	5,15	25
9SG6	120	120	M6	15	26	19	6,5	19,5	11,5	14	51	6,16	10
9SG8			M8	15	26	19	8,5	19,5	11,5	14	51	5,94	10
9SG10			M10	15	26	19	10,5	19,5	11,5	14	51	5,81	10
9SG12			M12	15	26	19	13	19,5	14	14	51	5,92	10

Part No.	Cross section class 2 mm ²	Cross section class 5 mm ²	Stud hole	Dimensions mm								Weight 100 pcs/ ~kg	Packing unit/pcs
				d1	a	b	d2	d4	c1	c2	l		
10SG6	150	150	M6	16,5	30	19	6,5	21	11,5	14	56	6,85	10
10SG8			M8	16,5	30	19	8,5	21	11,5	14	56	6,8	10
10SG10			M10	16,5	30	19	10,5	21	11,5	14	56	6,75	10
10SG12			M12	16,5	30	19	13	21	15	15	57	7,15	10
11SG10	185	185	M10	19	30	24,5	10,5	24	11,5	18	65	10,59	10
11SG12			M12	19	30	31	13	24	18	18	65	11,09	10
11SG16			M16	19	30	31	17	24	18	18	65	9,76	10
12SG10	240	240	M10	21	35	31	10,5	26	11,5	19	72	12,7	5
12SG12			M12	21	35	31	13	26	21,5	19	72	13,72	5
12SG16			M16	21	35	31	17	26	21,5	19	72	13,28	5
13SG10	300	300	M10	23,5	44	31	10,5	30	11,5	24	87	19,7	5
13SG12			M12	23,5	44	31	13	30	24	24	87	22,72	5
13SG16			M16	23,5	44	31	17	30	24	24	87	22,5	5

Also available as a customized item with inspection hole, Part Number appendix "MS"

B: Material specifications:

1. General

Material: Cu according EN 13600

2. Condition

2.1 Surface

2.1.1 smooth, bright, even, no tears, scoring, folds, blisters, no other defects

2.1.2 averaged roughness depth Rz max. 2µm

2.1.3 galvanically tined (3 – 5 µm)

2.1.4 Maximum temperature: Min -40°C – Max. 120°C

C: Processing information:

3. Conductor compatibility

Compatible with class 2 conductor when using the hexagonal crimp and compatible with class 2 and class 5 according to IEC 60228 when using the indent crimp of the EKM60ID.

4. Standard crimping indent dies

4.1 EKM60IDCF, indent crimp

4.1.1 10-240 mm²

4.2 Series 50, hexagonal crimp

4.2.1 Compatible tools

4.2.1.1 Battery hydraulic tool: EK1550ML

4.2.1.2 Battery mechanic tool: EK50ML

4.2.1.3 Hand tool: K50

Part No.	R504	R505
Cross section mm ²	6-16	16-25

4.3 Series 4, hexagonal crimp

4.3.1 Compatible tools

4.3.1.1 Battery hydraulic tools: EK354ML, EK354

4.3.1.2 Hand tools: K354

Part No.	HR46	HR410	HLR16	HR425	HR435	HR450	HR470	HR495	HR4120	HR4150
Cross section mm ²	6	10	16	25	35	50	70	95	120	150

4.4 Series 5, hexagonal crimp

4.4.1 Compatible tools

4.4.1.1 Battery hydraulic tools: EK505, EKM60UNV + UA5, EK60UNV + UA5

4.4.1.2 Hand hydraulic tools: HK60UNV + UA5

Part No.	HR5635	HR51050	HR51670	HR52595	HR5120	HR5150	HR5185
Cross section mm ²	6 + 35	10 + 50	16 + 70	25 + 95	120	150	185
Part No.	HR5240						
Cross section mm ²	240						

4.5 Series 18, hexagonal crimp

4.5.1 Compatible tools

4.5.1.1 Battery hydraulic tools: EK5018, EKM60UNV + UA18, EK60UNV + UA18

4.5.1.2 Hand hydraulic tools: HK6018, HK60UNV + UA18

4.5.1.3 Crimping heads: PK18, PK60UNV + UA18

4.5.1.4 Hydraulic tool for workbench: THK18

4.5.1.5 Hand tool: K18

Part No.	R6	R10	R16	R25	R35	R50	R70	R95
Cross section mm ²	6	10	16	25	35	50	70	95
Part No.	R120	R150	R185	R240				
Cross section	120	150	185	240				

mm²				
-----	--	--	--	--

4.6 Series 22, hexagonal crimp

4.6.1 Compatible tools

- 4.6.1.1 Battery hydraulic tools: EKM6022, EK6022, EKM60UNV + UA22, EK60UNV + UA22
- 4.6.1.2 Hand hydraulic tools: HK6022, HK60UNV + UA22
- 4.6.1.3 Crimping heads: PK22, PK60UNV + UA22
- 4.6.1.4 Hydraulic tool for workbench: THK22
- 4.6.1.5 Hand tool: K22

Part No.	R226	R2210	R2216	R2225	R2235	R2250	R2270
Cross section mm²	6	10	16	25	35	50	70
Part No.	R2295	R22120	R22150	R22185	R22240	R22300	
Cross section mm²	95	120	150	185	240	300	

4.7 Series 13, hexagonal crimp

4.7.1 Compatible tools

- 4.7.1.1 Battery hydraulic tools: EK12032, EK12042, EK120UNV + UA12TKL, EK120U, EK135FT + UA15T
- 4.7.1.2 Hand hydraulic tools: HK12030, HK12042, HK120U
- 4.7.1.3 Crimping heads: HK122EL380, PK12042, PK120U
- 4.7.1.4 Hydraulic tool for workbench: THK120

Part No.	HR1310	HR1316	HR1325	HR1335	HR1350	HR1370
Cross section mm²	10	16	25	35	50	70
Part No.	HR1395	HR13120	HR13150	HR13185	HR13240	HR13300
Cross section mm²	95	120	150	185	240	300

4.8 Series 25, hexagonal crimp

4.8.1 Compatible tools

- 4.8.2 Crimping heads: HK252, HK252EL380, PK252

Part No.	HR2516	HR2525	HR2535	HR2550	HR2570	HR2595
Cross section mm²	16	25	35	50	70	95
Part No.	HR25120	HR25150	HR25185	HR25240	HR25300	
Cross section mm²	120	150	185	240	300	

4.9 Mechanical Hand tools with not interchangeable dies:

K2	0,75-16 mm ² , indent crimp
K04	10-25 mm ² , hexagonal crimp
K05	6-70 mm ² , hexagonal crimp
K06	6-120 mm ² , hexagonal crimp
K09	25-150 mm ² , hexagonal crimp
K95	16-95 mm ² , indent crimp
K5	6-50 mm ² , indent crimp
K6	50-120mm ² , indent crimp
K07	185-300mm ² , indent crimp
K7	120-240mm ² , indent crimp
K8	35-95mm ² , indent crimp

D: Certification and Tests

1. Underwriters Laboratories (UL) tested and listed acc. to UL 486A-486B
2. IEC 61238-1, class a in an accredited test laboratory
3. DNV-GL certified and listed
4. Tube tested according to DIN EN 61373 category 1, class B