

FEATURES

- Easy to fit.
- The hexagonal body allows tightening with a wrench
- Better level of corrosion resistance provided by the brass build and nickel plating
- Available in different lengths
- Male/Female and Female/female fittings available in this range.
- These brass standoffs maintain electrical conductivity when looking to maintain a circuit

RS PRO Brass Hex Standoff Female/Female, 20mm, M4xM4

RS Stock No.: 222-496



RS Professionally Approved Products bring to you professional quality parts across all product categories. Our product range has been tested by engineers and provides a comparable quality to the leading brands without paying a premium price.

Product Description

From RS PRO, comes a range of high quality and robust Hex standoffs. Manufactured with nickel-plated brass these adaptable standoffs are a fantastic solution for securely mounting your PCB. These standoffs are ideal for temperature reduction of equipment by improving the airflow to components.

General Specifications

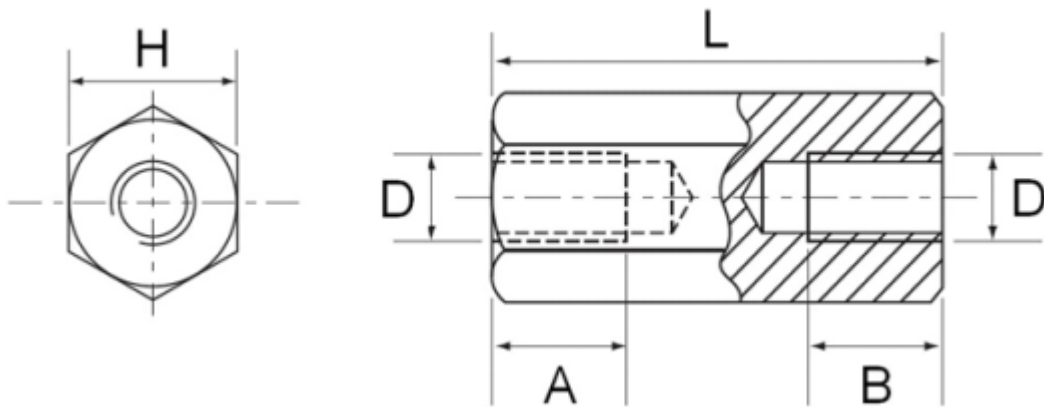
Gender Type	Female/Female
Material	Brass
Body Shape	Hex
Finish	Nickel Plated
Plating	Nickel
Application	Office machinery, Telecommunications equipment, Consumer electronics, Audio visual equipment

Mechanical Specifications

Body Length	20mm
Thread Size	M4 x M4
Thread Size A	M4
Thread Size B	M4
Hex Size Across Flat	7mm
Hole Depth	20mm
Internal Thread Size	20mm

Approvals

Compliance/Certifications	EN61340
----------------------------------	---------



No	RS. Article No.	Material	Finish	H	D	Hole(A/B)	L
1	222468	Brass	Nickel Plated	7	M4	5	5
2	222474					6	6
3	222480					10	10
4	222496					20	20
5	222503					10	10