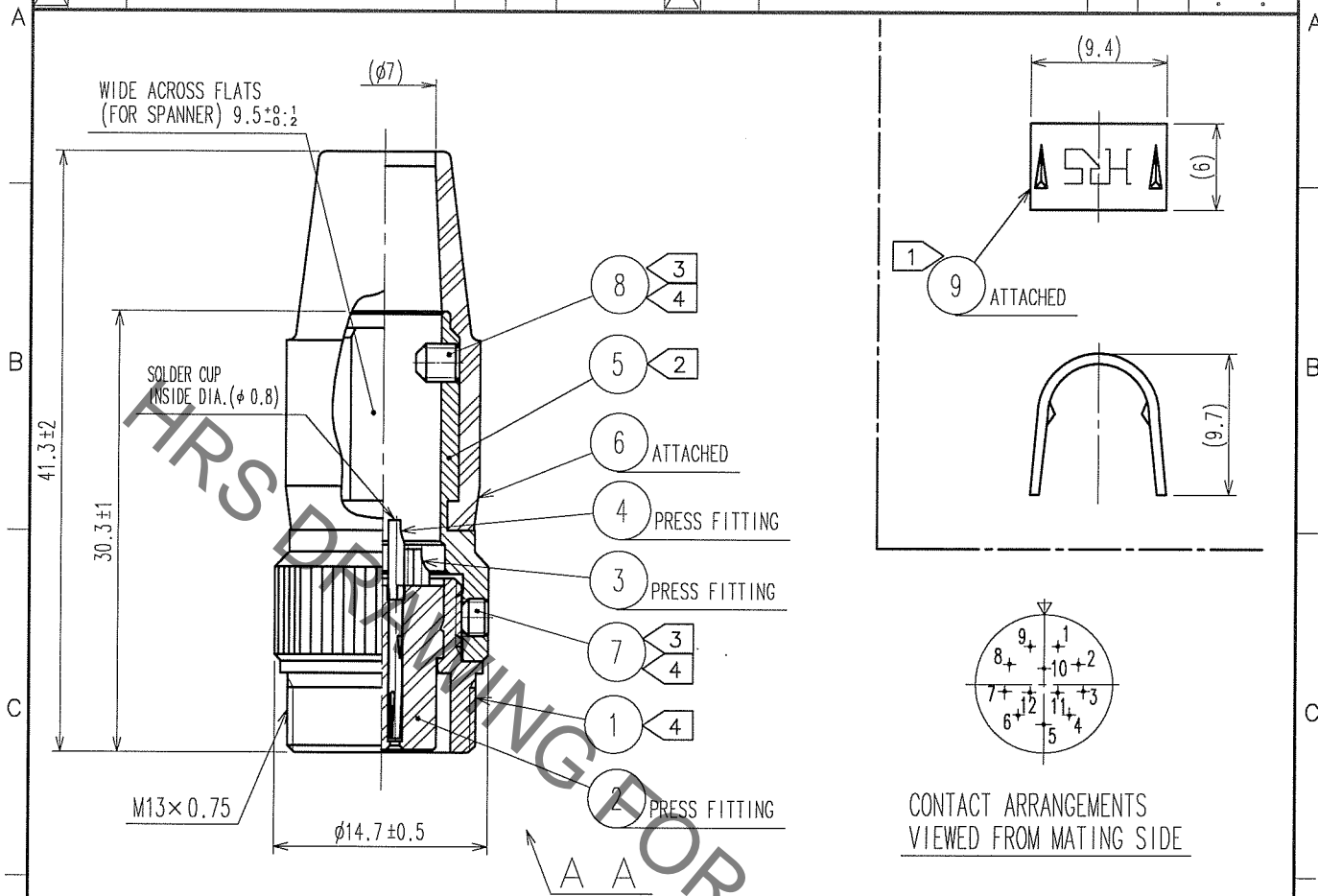


Sep. 1. 2019 Copyright 2019 HIROSE ELECTRIC CO., LTD. All Rights Reserved.
 In case of consideration for using Automotive equipment / device which demand high reliability, kindly contact our sales window correspondents.

1					2					3					4				
COUNT	DESCRIPTION OF REVISIONS				BY	CHKD	DATE	COUNT	DESCRIPTION OF REVISIONS				BY	CHKD	DATE				
△								△											
△								△											
△								△											



- NOTE
- ① HAND CRIMPING TOOL, REF. NO. ⑨: HR10A-TC-02 (CL150-0041-2)
THE HOLE DIAMETER FOR CRIMPING: $\phi 7.0$
 - ② THE RECOMMENDED CLAMP TORQUE, REF. NO. ⑤: 2-2.5 N·m.
 - ③ ACROSS FLATS HEXAGON HEAD OF REF. NO. ⑦ AND ⑧: 1.27
THE RECOMMENDED CLAMP TORQUE, REF. NO. ⑦ AND ⑧: 0.3-0.4N·m.
 - ④ LOCTITE 242, HENKEL JAPAN OR EQUIVALENT IS RECOMMENDED TO PREVENT REF. NO. ①, ⑦ AND ⑧ FROM LOOSENING.
 - ⑤ ONE EXAMPLE OF THE ROTATION OF REF. NO. ⑤ TO REF. NO. ① IS SHOWN.

5	BRASS	NICKEL PLATING			
4	PHOSPHOR BRONZE	SILVER PLATING 2μ m min.	9	BRASS	
3	PHOSPHOR BRONZE		8	STEEL	NICKEL PLATING HEXAGON SOCKET SET SCREW M2.6×0.45×3
2	POLYAMIDE	(BLACK) UL94V-0	7	STEEL	NICKEL PLATING HEXAGON SOCKET SET SCREW M2.6×0.45×2
1	BRASS	NICKEL PLATING	6	CR	(BLACK)
NO.	MATERIAL	FINISH, REMARKS	NO.	MATERIAL	FINISH, REMARKS

CODE NO. (OLD)	DRAWN	DESIGNED	CHECKED	APPROVED	RELEASED
CL	<i>D. Matsume</i>	<i>D. Matsume</i>	<i>E. Kunii</i>	<i>M. Sato</i>	
	05.10.01	05.10.01	05.10.03	05.10.14	

 SACLE 2 : 1 UNITS mm	DRAWING NO.	PART NO.	 HIROSE ELECTRIC CO., LTD.
	EDC4-040449-73	HR10A-10TJ-12S(73)	
	CODE NO.		
	CL110-0436-1-73		

TO
R