



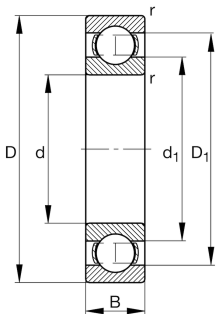
FAG

16024-C3 [🔗](#)

Deep groove ball bearing

Deep groove ball bearing 160, single row,
steel sheet metal cage

Technical information



Your current product variant

Sealing	Without	Not sealed
Cage	JN	Steel sheet metal
Tolerance class	PN	Normal (PN)
Dimensional / heat stabilization	S0	Rings dimensional stabilized up to 150°
Lubricant	Without	Bearing not greased
Radial internal clearance	C3 (Group 3)	Internal clearance larger than CN
Bore type	Z	Cylindrical

Main Dimensions & Performance Data

d	120 mm	Bore diameter
D	180 mm	Outside diameter
B	19 mm	Width
C _r	65,000 N	Basic dynamic load rating, radial
C _{0r}	64,000 N	Basic static load rating, radial
C _{ur}	3,100 N	Fatigue load limit, radial
n _G	5,200 1/min	Limiting speed
n _{gr}	3,550 1/min	Reference speed
≈m	1.56 kg	Weight



Mounting dimensions

$d_{a\min}$	124.6 mm	Minimum diameter shaft shoulder
$D_{a\max}$	175.4 mm	Maximum diameter of housing shoulder
$r_{a\max}$	1 mm	Maximum fillet radius

Dimensions

r_{\min}	1 mm	Minimum chamfer dimension
D_1	159.48 mm	Shoulder diameter outer ring
d_1	140.72 mm	Shoulder diameter inner ring

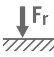
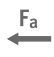




Temperature range

T_{\min}	-30 °C	Operating temperature min.
T_{\max}	150 °C	Operating temperature max.

Calculation factors

f_0	16.5	Calculation factor
-------	------	--------------------

Characteristics

-  F_r Radial load
-  F_a Axial load in one direction
-  F_a Axial load in two directions
-  Grease Lubrication
-  Oil Lubrication
-  Not sealed