



ENGLISH

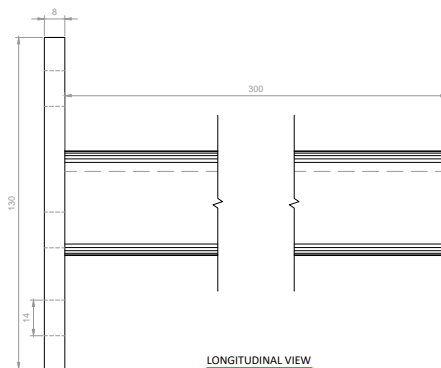
## Datasheet

# Plain Cantilever Arms Hot Dipped Galvanised

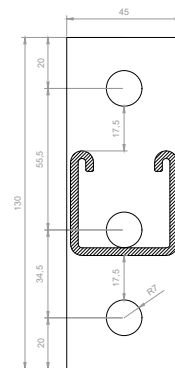
RS Stock No **1766909**

Size **300mm**

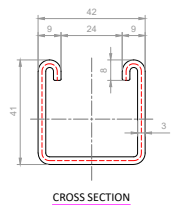
Cantilever arms can be used for supporting and mounting air condition units or pipeline to walls, and are also used with channel/Strut.



LONGITUDINAL VIEW



FRONT VIEW



CROSS SECTION

Please view our full range listing below

RS Stock No	Size (mm)
1766910	150mm
1766909	300mm
1766908	450mm
1766907	600mm
1766906	750mm