

OVERLOAD RELAY 0.90...1.25 A FOR MOTOR PROTECTION SZ S00, CLASS 10, STAND-ALONE INSTALLATION MAIN CIRCUIT: SPRING TERMINAL AUX. CIRCUIT: SPRING TERMINAL MANUAL-AUTOMATIC-RESET



| | |
|--|-----------------------------|
| product brand name | SIRIUS |
| Product designation | 3RU2 thermal overload relay |
| General technical data: | |
| Size of overload relay | S00 |
| Size of contactor can be combined company-specific | S00 |
| Power loss [W] total typical | 4.8 W |
| Insulation voltage with degree of pollution 3 rated value | 690 V |
| Surge voltage resistance rated value | 6 kV |
| maximum permissible voltage for safe isolation | |
| <ul style="list-style-type: none"> in networks with grounded star point between auxiliary and auxiliary circuit | 440 V |
| <ul style="list-style-type: none"> in networks with grounded star point between auxiliary and auxiliary circuit | 440 V |
| <ul style="list-style-type: none"> in networks with grounded star point between main and auxiliary circuit | 440 V |
| <ul style="list-style-type: none"> in networks with grounded star point between main and auxiliary circuit | 440 V |
| Protection class IP | |
| <ul style="list-style-type: none"> on the front | IP20 |

| | |
|--|-------------------|
| • of the terminal | IP20 |
| Shock resistance | |
| • acc. to IEC 60068-2-27 | 8g / 11 ms |
| Type of protection | Ex e |
| Certificate of suitability relating to ATEX | DMT 98 ATEX G 001 |
| Protection against electrical shock | finger-safe |
| Equipment marking acc. to DIN EN 81346-2 | F |

Ambient conditions:

| | |
|--|----------------|
| Installation altitude at height above sea level maximum | 2 000 m |
| Ambient temperature | |
| • during operation | -40 ... +70 °C |
| • during storage | -55 ... +80 °C |
| • during transport | -55 ... +80 °C |
| Temperature compensation | -40 ... +60 °C |

Main circuit:

| | |
|---|----------------|
| Number of poles for main current circuit | 3 |
| Adjustable pick-up value current of the current-dependent overload release | 0.9 ... 1.25 A |
| Operating voltage | |
| • rated value | 690 V |
| • at AC-3 rated value maximum | 690 V |
| Operating frequency rated value | 50 ... 60 Hz |
| Operating current rated value | 1.25 A |

Auxiliary circuit:

| | |
|---|-----------------------------|
| Design of the auxiliary switch | integrated |
| Number of NC contacts | |
| • for auxiliary contacts | 1 |
| — Note | for contactor disconnection |
| Number of NO contacts | |
| • for auxiliary contacts | 1 |
| — Note | for message "Tripped" |
| Number of CO contacts | |
| • for auxiliary contacts | 0 |
| Operating current of auxiliary contacts at AC-15 | |
| • at 24 V | 3 A |
| • at 110 V | 3 A |
| • at 120 V | 3 A |
| • at 125 V | 3 A |
| • at 230 V | 2 A |
| • at 400 V | 1 A |

| | |
|---|--------|
| Operating current of auxiliary contacts at DC-13 | |
| • at 24 V | 2 A |
| • at 110 V | 0.22 A |
| • at 125 V | 0.22 A |
| • at 220 V | 0.11 A |

| | |
|---|----------|
| Protective and monitoring functions: | |
| Trip class | CLASS 10 |
| Design of the overload release | thermal |

| | |
|---|-------------|
| UL/CSA ratings: | |
| Full-load current (FLA) for three-phase AC motor | |
| • at 480 V rated value | 1.25 A |
| • at 600 V rated value | 1.25 A |
| Contact rating of auxiliary contacts according to UL | B600 / R300 |

| | |
|--|--------------------------|
| Installation/ mounting/ dimensions: | |
| Mounting position | any |
| Mounting type | stand-alone installation |
| Height | 102 mm |
| Width | 45 mm |
| Depth | 79 mm |
| Required spacing | |
| • with side-by-side mounting | |
| — forwards | 0 mm |
| — Backwards | 0 mm |
| — upwards | 6 mm |
| — downwards | 6 mm |
| — at the side | 6 mm |
| • for grounded parts | |
| — forwards | 0 mm |
| — Backwards | 0 mm |
| — upwards | 6 mm |
| — at the side | 6 mm |
| — downwards | 6 mm |
| • for live parts | |
| — forwards | 0 mm |
| — Backwards | 0 mm |
| — upwards | 6 mm |
| — downwards | 6 mm |
| — at the side | 6 mm |

| | |
|--------------------------------|--|
| Connections/ Terminals: | |
| Product function | |

| | |
|---|---|
| <ul style="list-style-type: none"> removable terminal for auxiliary and control circuit | No |
| Type of electrical connection <ul style="list-style-type: none"> for main current circuit for auxiliary and control current circuit | spring-loaded terminals spring-loaded terminals |
| Arrangement of electrical connectors for main current circuit | Top and bottom |
| Type of connectable conductor cross-sections <ul style="list-style-type: none"> for main contacts <ul style="list-style-type: none"> single or multi-stranded finely stranded with core end processing finely stranded without core end processing at AWG conductors for main contacts | 1x (0,5 ... 4 mm ²) 1x (0.5 ... 2.5 mm ²) 1x (0.5 ... 2.5 mm ²) 1x (20 ... 12) |
| Type of connectable conductor cross-sections <ul style="list-style-type: none"> for auxiliary contacts <ul style="list-style-type: none"> single or multi-stranded finely stranded with core end processing finely stranded without core end processing at AWG conductors for auxiliary contacts | 2x (0,5 ... 2,5 mm ²) 2x (0.5 ... 1.5 mm ²), 2x (0.75 ... 2.5 mm ²) 2x (0.5 ... 1.5 mm ²) 2x (20 ... 14) |
| Design of screwdriver shaft | 5 to 6 mm diameter |

Safety related data:

| | |
|---|---------|
| Failure rate [FIT] <ul style="list-style-type: none"> with low demand rate acc. to SN 31920 | 50 FIT |
| MTTF with high demand rate | 2 280 y |
| T1 value for proof test interval or service life acc. to IEC 61508 | 20 y |

Display:

| | |
|---|--------------|
| Display version <ul style="list-style-type: none"> for switching status | Slide switch |
|---|--------------|

Certificates/approvals

| | |
|---------------------------------|---------------------------------------|
| General Product Approval | For use in hazardous locations |
|---------------------------------|---------------------------------------|



| | | |
|----------------------------------|--------------------------|--------------------------|
| Declaration of Conformity | Test Certificates | Shipping Approval |
|----------------------------------|--------------------------|--------------------------|



[Typrüfbescheinigung/Werkszeugnis](#)



| | |
|--------------------------|--------------|
| Shipping Approval | other |
|--------------------------|--------------|



[Umweltbestätigung](#)

[Bestätigungen](#)

| |
|----------------|
| Railway |
|----------------|

[Schwingen/Schockeinrichtungen](#)

| |
|----------------------------|
| Further information |
|----------------------------|

Information- and Downloadcenter (Catalogs, Brochures,...)

<http://www.siemens.com/industrial-controls/catalogs>

Industry Mall (Online ordering system)

<https://mall.industry.siemens.com/mall/en/en/Catalog/product?mlfb=3RU21160KC1>

Cax online generator

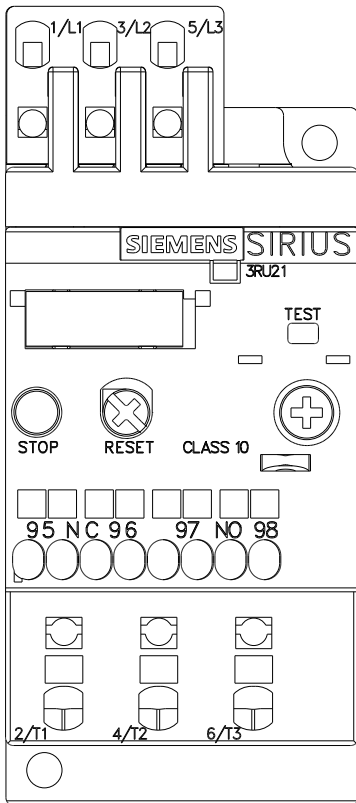
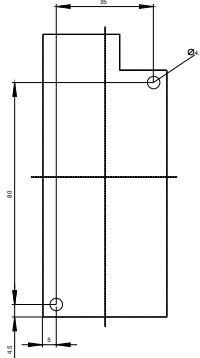
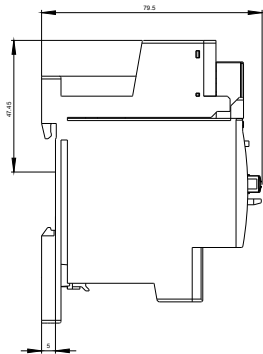
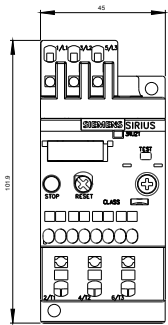
<http://support.automation.siemens.com/WW/CAXorder/default.aspx?lang=en&mlfb=3RU21160KC1>

Service&Support (Manuals, Certificates, Characteristics, FAQs,...)

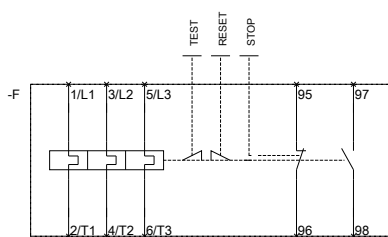
<https://support.industry.siemens.com/cs/ww/en/ps/3RU21160KC1>

Image database (product images, 2D dimension drawings, 3D models, device circuit diagrams, EPLAN macros, ...)

http://www.automation.siemens.com/bilddb/cax_de.aspx?mlfb=3RU21160KC1&lang=en



~~MEBERRASSTREZLAIS FUER~~



last modified:

27.06.2016

~~QVBEREOPABRELCAYONDR~~