



Figure similar

SITOR fuse link, with female thread on both sides, In: 1250 A, aR, Un AC: 600 V, Un DC: 440 V, front indicator

Model	
product brand name	SETRON
product designation	SITOR fuse link
design of the product	With female thread on both sides
design of an identification indicator	front indicator
design of the switching contact	with M10 female thread at both ends for direct busbar mounting. for air-cooled rectifiers in electrolysis systems
design of the fuse link	Fuses for special applications
General technical data	
size of fuse system according to EN 60269-1	others
operating class of the fuse link	aR
varying load factor (WL)	0.9
type of voltage of the operating voltage	AC/DC
operating voltage at AC according to UL rated value	600 V
Supply voltage	
supply voltage	
• at AC	600 V
• at DC	440 V
Breaking Capacity	
switching capacity current	
• according to IEC 60947-2 rated value	100 kA
Dissipation	
power loss [W]	210 W
power loss [W]	
• for rated value of the current at AC in hot operating state per pole	210 W
• maximum	210 W
Product details	
product description	with female thread on both sides, silver-plated
accessories included	no
Mechanical Design	
mounting position	Any, preferably vertical
net weight	1 124 g
Environmental conditions	
ambient temperature during operation	
• minimum	-20 °C
• maximum	50 °C
environmental category	-20 to +50 at 95% relative humidity
Approvals Certificates	

General Product Approval	Test Certificates	other	Environment
--------------------------	-------------------	-------	-------------



[Special Test Certificate](#)

[Confirmation](#)

[Miscellaneous](#)

[Environmental Confirmations](#)

## Environment

[Environmental Confirmations](#)

## Further information

### Information on the packaging

<https://support.industry.siemens.com/cs/ww/en/view/109813875>

### Information- and Downloadcenter (Catalogs, Brochures,...)

<http://www.siemens.com/lowvoltage/catalogs>

### Industry Mall (Online ordering system)

<https://mall.industry.siemens.com/mall/en/en/Catalog/product?mlfb=3NE9450>

### Service&Support (Manuals, Certificates, Characteristics, FAQs,...)

<https://support.industry.siemens.com/cs/ww/en/ps/3NE9450>

### Image database (product images, 2D dimension drawings, 3D models, device circuit diagrams, ...)

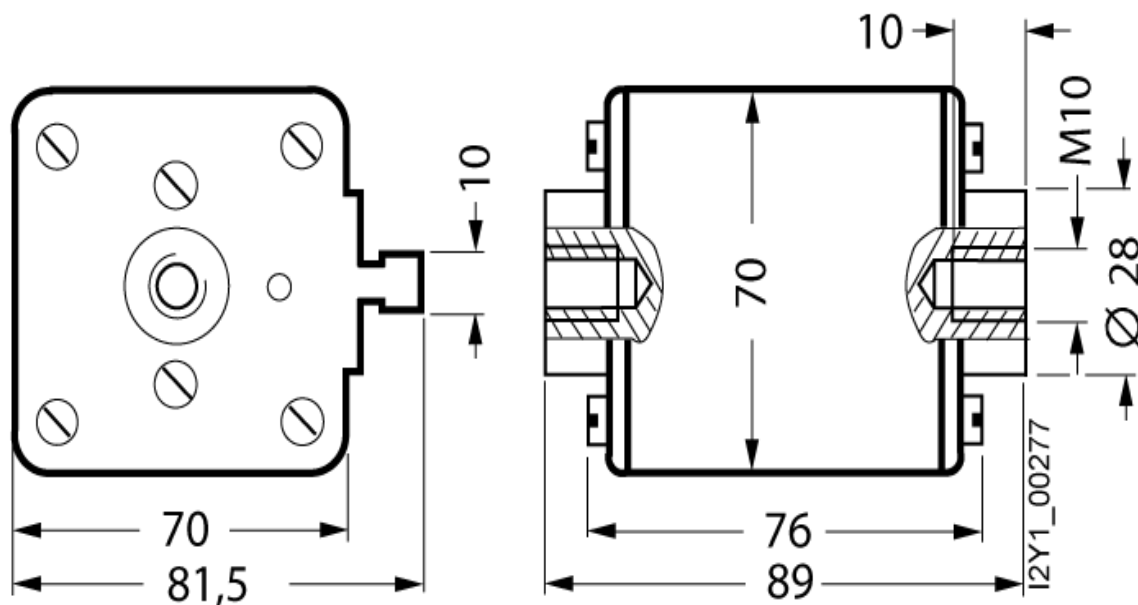
[http://www.automation.siemens.com/bilddb/cax\\_en.aspx?mlfb=3NE9450](http://www.automation.siemens.com/bilddb/cax_en.aspx?mlfb=3NE9450)

### CAX-Online-Generator

<http://www.siemens.com/cax>

### Tender specifications

<http://www.siemens.com/specifications>



last modified:

4/4/2025

