

Rittal – The System.

Faster – better – everywhere.

▶ **Base/plinth corner piece
with base/plinth trim
panels, front and rear,
optimized design,
200 mm - 8640021**

Date : Jul 22 , 2020

ENCLOSURES

POWER DISTRIBUTION

CLIMATE CONTROL

IT INFRASTRUCTURE

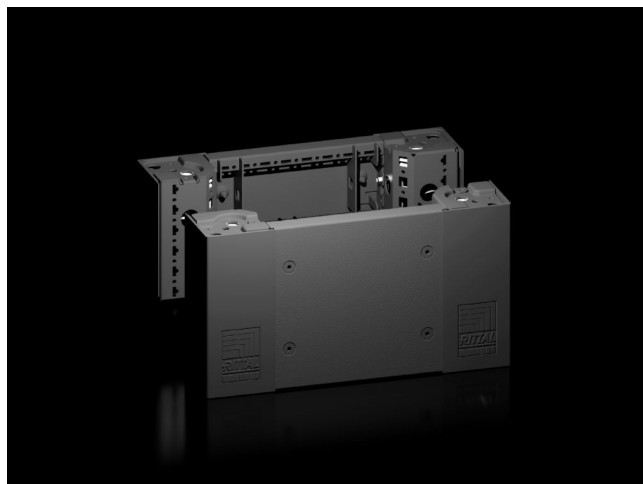
SOFTWARE & SERVICES

FRIEDHELM LOH GROUP



Base/plinth corner piece with base/plinth trim panels, front and rear, optimized design, 200 mm - 8640021

created: 07.22.2020 build on <https://www.rittal.us/>



Product Description

Description	Optimized design of the VX base/plinth system with improved stability and easy handling due to trim panels screw-fastened from the front. The existing advantages of the base/plinth are retained.
Version	optimized design
Material	Base/plinth trims: Sheet steel Base/plinth corner piece: Sheet steel Corner and baying covers: Plastic
Color	RAL 9005
Supply includes	Assembly components 1 x baying cover 2 x base/plinth trim panels front/rear 100 mm high 4 x corner covers 1 base/plinth trim panel front/rear 200 mm 4 x base/plinth corner pieces 200 mm high
Notes	Base/plinth trim panels on the side for closing off a base/plinth unit for additional stabilization of the bases/plinths to one another or for interior installation of the bases/plinths
Suitable for	400 mm (16 ")
Dimensions	200 mm (7.9 ")
Packaging unit	2 pc(s).

Weight/packaging unit	5.42 kg (11.9 lb.)
EAN	4028177958852
Customs tariff number	94039010
Product description (long)	VX Base/plinth corner piece with base/plinth trim panel front and rear new model H: 200 mm for W: 400 mm RAL 9005 sheet steel