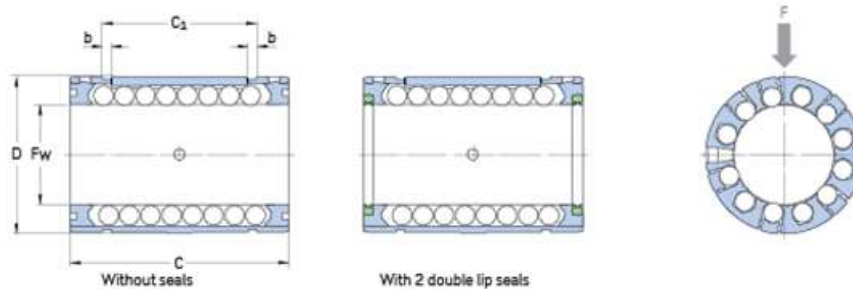
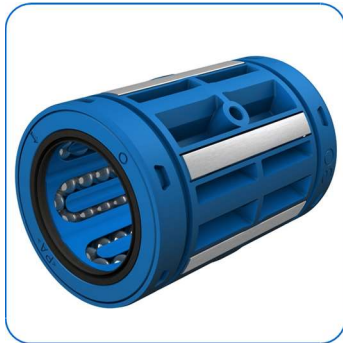


Product data sheet

LBCR 25 D-2LS

Linear ball bearing with 2 seals, closed design



Replacing LBCR 25 A-2LS

Fw:	25
D[mm]:	40
C[mm]:	58
C1[mm]:	43.7
b[mm]:	1.85
Ball rows [#]:	6
Cmin[N]:	3100
Cmax[N]:	4550
C0min[N]:	2360
C0max[N]:	3800
vmax[m/s]:	5

Date: 13/05/2020

The contents of this report are the copyright of the publisher and may not be reproduced (even extracts) unless permission is granted. Every care has been taken to ensure the accuracy of the information contained in this report but no liability can be accepted for any loss or damage whether direct, indirect or consequential arising out of the use of the information contained herein.

Product data sheet

LBCR 25 D-2LS

Linear ball bearing with 2 seals, closed design

amax[m/s ²]:	100
Weight [kg]:	0.108

Date: 13/05/2020

The contents of this report are the copyright of the publisher and may not be reproduced (even extracts) unless permission is granted. Every care has been taken to ensure the accuracy of the information contained in this report but no liability can be accepted for any loss or damage whether direct, indirect or consequential arising out of the use of the information contained herein.