

T2FH 232-11UEDR/11UEDR

- Metal enclosure
- double-pedal type
- 2 contacts per pedal
- High level of stability
- 2 cable entries M 25 x 1.5
- Low operating height of pedal
- Protective shield with wide opening

Data

General data

Product name	T2FH 232
Standards	IEC 60947-5-1 BG-GS-ET-14 DIN VDE 0660-200
Enclosure material	Aluminium
Enclosure coating material	powder-coated
Material of the cover	Aluminium
Material of the pedal	Glass-fibre, reinforced thermoplastic
Material of the protective shield	Aluminium
Colour of the housing	RAL 9006 (White aluminum)
Gross weight	3850.000 g

General data - Features

Latching	Yes
Protective shield	Yes
Probing possible	Yes
Suitable for EMERGENCY-OFF	Yes
Number of pedals, NC	1
Number of pedals, NO	1

Safety appraisal

Standards	ISO 13849-1
Mission Time	20 Year(s)

Safety appraisal - Safety outputs

B10d Normally-closed contact (NC) 100,000 Operations

Mechanical data

Mechanical life, minimum 1,000,000 Operations

Mechanical data - Connection technique

Terminal Connector Screw connection

Cable section, maximum 2.5 mm²

Note (Cable section) All indications about the cable section are including the conductor ferrules.

Mechanical data - Dimensions

Width 295 mm

Height 189 mm

Depth 274 mm

Ambient conditions

Protection class IP 65 to IEC/EN 60529

Ambient temperature, minimum -25 °C

Ambient temperature, maximum +60 °C

Storage and transport temperature, minimum -25 °C

Storage and transport temperature, maximum +85 °C

Relative humidity, minimum 30 %

Relative humidity, maximum 95 %

Note (Relative humidity) non-condensing
non-icing

Resistance to vibrations to EN 60068-2-6 10 ... 150 Hz, amplitude 0.35 mm / 5 g

Restistance to shock 30 g / 11 ms

Ambient conditions - Insulation value

Rated impulse withstand voltage 6 kV

Overvoltage category III

Degree of pollution to VDE 0100 3

Electrical data

Thermal test current 10 A

Required rated short-circuit current to EN 60947-5-1 1,000 A

Utilisation category AC-15 230 VAC

Utilisation category AC-15 4 A

Utilisation category DC-13	24 VDC
Utilisation category DC-13	1 A
Switching element	NO contact, NC contact
Switching principle	Slow action with overlapping contacts
Switching frequency	3,600 /h

Ordering code

Product type description:

(1)2F(2) 232-(3)-(4)

(1)

T Slow action
Z Snap action

(2)

without without protective shield
H with protective shield

(3)

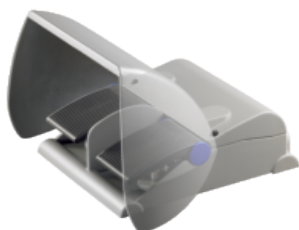
11/11 1 NO contacts/1 NC contact
02/02 2 NC contact
20/20 2 NO contacts
22/22 2 NO contacts/2 NC contact
04/04 4 NC contact
40/40 4 NO contacts

(4)

HD phase actuation with pressure point

Pictures

Product picture (catalogue individual photo)

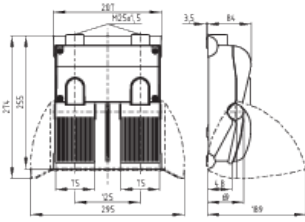


ID: ktfh2f01

| 28,4 kB | .png | 74.083 x 59.972 mm - 210 x 170
Pixel - 72 dpi

| 299,7 kB | .jpg | 352.778 x 285.397 mm - 1000 x 809
Pixel - 72 dpi

Dimensional drawing basic component



ID: 1t2f-g02

| 44,4 kB | .cdr |

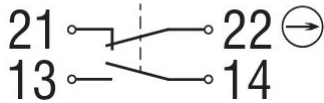
| 156,7 kB | .jpg | 352.778 x 247.297 mm - 1000 x 701

Pixel - 72 dpi

| 11,9 kB | .png | 74.083 x 51.858 mm - 210 x 147

Pixel - 72 dpi

Diagram



ID: ktf--k01

| 16,0 kB | .cdr |

K.A. Schmersal GmbH & Co. KG, Möddinghofe 3, D-42279 Wuppertal

The details and data referred to have been carefully checked. Images may diverge from original. Further technical data can be found in the manual. Technical amendments and errors possible.

Generated on 07.09.2020 10:37:15