

Features

- Rated currents up to 6A
- Fast-on (6.3*0.8mm)
- The compact size can be applied to various situations.
- General purpose filtering performance

RS PRO EMI Filters

RS Stock No.: 286-7245



RS PRO is the own brand of RS. The RS PRO Seal of Approval is your assurance of professional quality, a guarantee that every part is rigorously tested, inspected, and audited against demanding standards. Making RS PRO the Smart Choice for our customers.

Product Description

High performance single phase chassis mount EMI filter Applications:

- *Electrical and electronic equipment*
- *Medical equipment*
- *Office automation equipment*
- *New energy equipment ,Communication equipment;*

General Specifications

The compact size can be applied to various situations.

This filter is also available as one-stage filters in noisy environment.

There are a variety of parts and combinations to meet different customer's EMC tests.

Customized products according to customer's requirements.

Electrical Specifications

*Size(Length*Width*Height) 44*29*25mm*

Weight 0.08kgs

Mounting Hole Spacing 39mm

Mechanical Specifications

Rated Voltage Max. 115/250VAC

Rated currents 6A

Operating frequency 50/60Hz

Hipot Rating Line to Ground 2250VDC Line to Line 1450VDC

Temperature range -25°C~+85°C

Leakage current 0.3mA/0.6mA

Inductance L: 2x2mH ;

Capacitance Cx: 0.015uF ; Cy:2200pF*2

Protection Category

IP Rating IP40

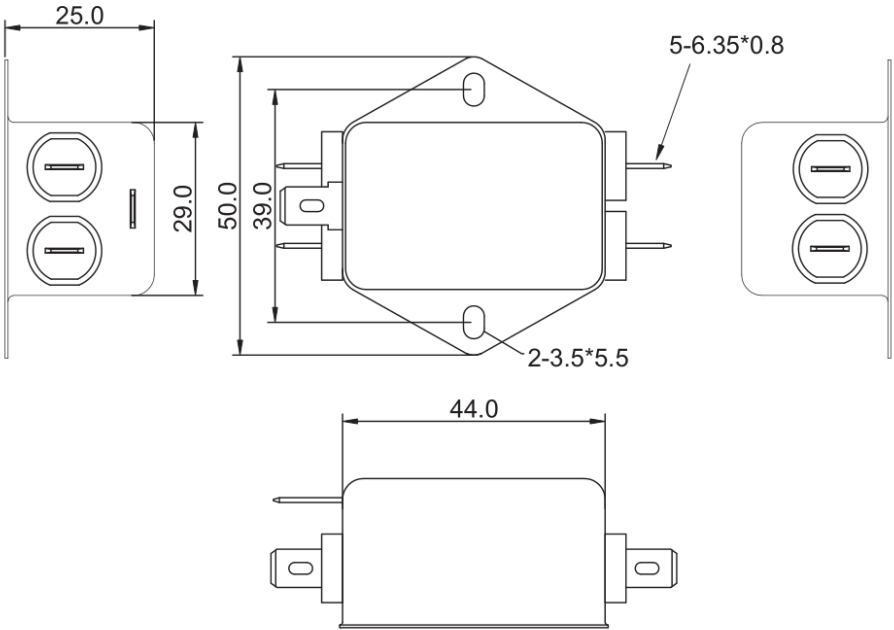
Approvals

Declarations UL CE UKCA REACH ROHS
Safety Standard UL/EN 60939, UL1283; CSA C22.2 No.8;

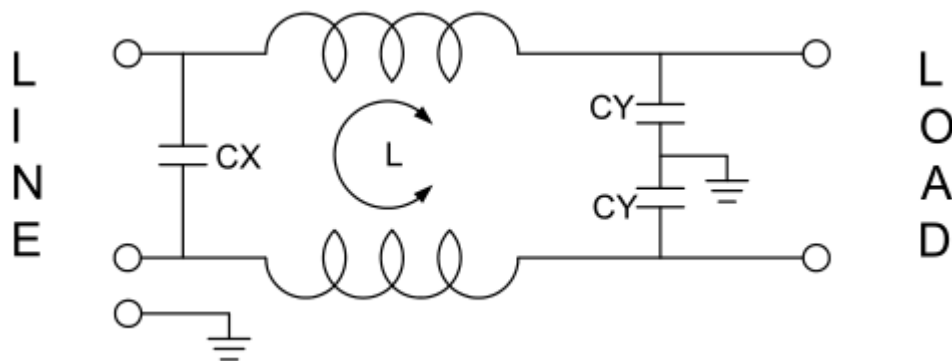
Similar Products

Stock No.	Brand	Phase Type	Mounting	Current	Dimension
237-8677	RS PRO	Single phase	Chassis mounting	6A	44*29*25mm

Physical Dimensions (Unit:mm)



Electrical Schematic



Insertion loss(IN 50ohm system according IEC/CISPR NO.17)

———— Common mode - - - - - Differential mode

