

Features

- Available in both metric and BSP-based Imperial sizes
- Hardness: 1 RHD 85-95
- Seals come in a range of sizes
- Reliable in high pressure applications

RS PRO Nitrile Rubber SealBonded Seal, 13.74mm Bore, 20.57mm Outer Diameter

RS Stock No.: 689-473



RS Professionally Approved Products bring to you professional quality parts across all product categories. Our product range has been tested by engineers and provides a comparable quality to the leading brands without paying a premium price.

Product Description

- *These RS PRO seals comprise a metal annulus to which a medium nitrile elastomeric ring of trapezoidal cross-section is bonded. They provide high and low pressure sealing for ports on fluid systems where mineral based hydraulic fluids or mineral based engine lubricating oils are present*

General Specifications

Type	Bonded Seal
Material	Nitrile Rubber
Application	Automotive; Plumbing; Aerospace; General Engineering
Resistance To	Mineral Hydraulic Oils And Grease
Kit Contents	8 Pieces

Mechanical Specifications

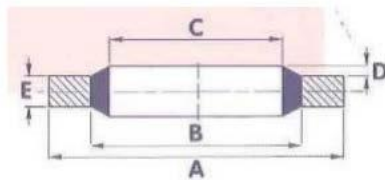
Inside Diameter	13.74mm
Outside Diameter	20.57mm
Thickness	2.03mm
Hardness	1 RHD 85-95
Tensile Strength	14N/mm ²
Elongation At Break Point	250%
Specific Gravity	1.372
Density	1.3g/cm ³
Heat Resistance	Tested To 100°C For 70 Hours
Compression Set 22h/ 100°C	14%
Volume Change	-5.57%

Electrical Specifications

Minimum Operating Temperature	-10°C
Maximum Operating Temperature	80°C
Glass Transition Temperature	-35°C

Approvals

Compliance/Certifications	CE / UR / cUR
---------------------------	---------------



PLAIN



REFERENCE	SIZE (INCHES)		A	B	C	D	E		APPROX BURST PRESSURE (BAR)
	BSP	BOLT	+0.13 -0.00	+0.10 -0.10	+0.10 -0.10		+0.15 -0.15		
	-	6BA	6.35	4.09	3.05	0.20/ 0.45	1.22		2150
	-	4BA	7.26	5.26	4.12				1570
	-	2BA	8.38	6.35	5.21				1375
	-	1/4	13.21	8.00	6.86				2450
	-	1/4	13.34	9.53	6.99				1700
	-	5/16	13.34	9.53	8.31				1700
	-	5/16	14.22	10.04	8.64				1750
689-467	1/8	3/8	15.88	11.84	10.37	0.25/ 0.51	2.03		1500
	-	0.4	18.36	12.45	11.26				1950
	-	7/16	19.05	13.08	11.69				1900
689-473	1/4	1/2	20.57	15.21	13.74				1550
	-	9/16	22.23	16.39	14.86				1575
	-	0.6	22.23	17.30	15.83				1310
	-	5/8	25.40	18.75	16.51				1550
689-489	3/8	-	23.80	18.75	17.28		2.50		1260
	-	11/16	25.40	19.69	18.16				1320
	-	3/4	26.92	21.21	19.69				1260
689-495	1/2	13/16	28.58	23.01	21.54				1150
	5/8	7/8	31.75	24.97	23.49				1250
	-	15/16	33.27	26.04	24.26				1275
689-502	3/4	1.0	34.93	28.53	27.05				1060
	-	1.1/16	38.61	30.61	27.82				1250
	-	1.1/8	36.58	30.86	29.33				900
	7/8	1.3/16	38.10	32.29	30.81				900
	-	1.1/4	41.40	35.69	32.64		3.38		800
689-518	1.0	1.5/16	42.80	36.88	33.89		2.50		810