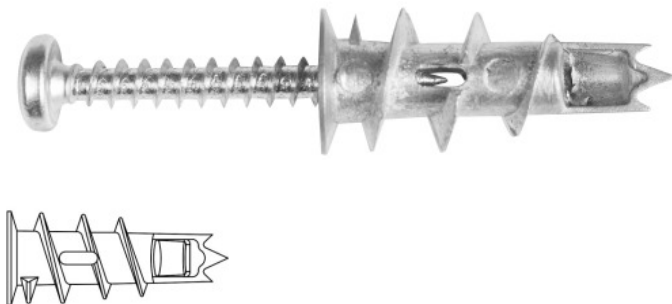


DRA-02 Metal self-drill fixing for drywall

A self-drilling light-duty metal fixing for use in plasterboard sheets.



Product information

Features and benefits

- Recommended for fire resistant application.
- Flange prevents accidental push through in plasterboard.
- Can be used in single and double thickness plasterboard.
- Short length ideally suited for dry lined walls.
- No drill required - simply pierce paper skin and screw home.
- Ideal for use with either a power or manual Pozidriv screwdriver.
- Must only be used with screws provided.

Applications

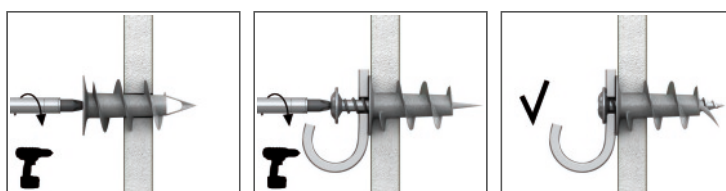
- Fixing electrical boxes, sanitary ware, cable trunking, etc.
- Shelves and bathroom accessories on standard plasterboard
- Ideal for installation of sockets, light switches and other electrical fittings
- Fixing light shelving, brackets and hooks
- Timber or metal battens
- Pictures

Base materials

Suitable for use in

- Plasterboard
- Gypsum Fibreboards
- Chipboard

Installation guide



1. Using a PZ2 screwdriver, push fixing point firmly into the board until thread engages.
2. Maintaining a firm pressure, screw in fixing until flush with the base material.
3. Place fixture in position, insert screw and tighten until secure.

Product information

Product Code	Plug		Screw		Fixture	
	Diameter	Length	Diameter	Length	Max. thickness	Hole diameter
	d	l	D	L	t _{fix}	d _f
[mm]						
R-DRA-02	13	31	-	-	-	-
R-DRA-02PLUS	13	31	4,5	34	12	5

Installation data

Size	DRA-02 (PLUS)		
Fixing diameter	d	[mm]	13
Min. substrate thickness	h _{min}	[mm]	9.5
Min. installation depth	h _{nom}	[mm]	9.5
Min. spacing	s _{min}	[mm]	35
Min. edge distance	c _{min}	[mm]	35

Basic performance data

Substrate	Plasterboard min. 9.5 mm		Plasterboard min. 12.5 mm	
CHARACTERISTIC LOAD F_{Rk}				
DRA-02 (PLUS)	[kN]	0.15		0.19
DESIGN LOAD F_{Rd}				
DRA-02 (PLUS)	[kN]	0.06		0.08
RECOMMENDED LOAD F_{rec}				
DRA-02 (PLUS)	[kN]	0.04		0.06

Product commercial data

Product Code	Plug	Screw	Quantity [pcs]			Weight [kg]			Bar Codes
	Diameter [mm]	Length [mm]	Box	Outer	Pallet	Box	Outer	Pallet	
R-DRA-02	13	-	100	3200	76800	0.42	13.5	354.1	5906675135823
R-DRA-02PLUS	13	34	100	1600	38400	0.67	10.7	287.3	5906675235271