

Base strip - MCDN 1,5/17-G1-3,5 P26THR - 1953868

Please be informed that the data shown in this PDF Document is generated from our Online Catalog. Please find the complete data in the user's documentation. Our General Terms of Use for Downloads are valid (<http://phoenixcontact.com/download>)




Header, Nominal current: 8 A, Rated voltage (III/2): 160 V, Number of positions: 17, Pitch: 3.5 mm, Color: black, Contact surface: Tin, Mounting: SMD/THT/THR, The pin length is 26 mm. User information and design recommendations on Through Hole Reflow Technology can be found at: [http: "Downloads"](http://Downloads).

The figure shows a 10-pos. version with 20 contacts



Key commercial data

| | |
|--------------------------------------|---|
| Packing unit | 50 pc |
| Minimum order quantity | 50 pc |
| GTIN |  4 017918 919399 |
| Weight per Piece (excluding packing) | 14.18 g |
| Custom tariff number | 85366990 |
| Country of origin | Bulgaria |
| Note | Made to Order (non-returnable) |

Technical data

Dimensions

| | |
|----------------|--------------|
| Length | 13.3 mm |
| Height | 15.2 mm |
| Pitch | 3.5 mm |
| Dimension a | 56 mm |
| Pin dimensions | 0,8 x 0,8 mm |
| Pin spacing | 3.50 mm |
| Hole diameter | 1.4 mm |

General

| | |
|-----------------------------|---------------------|
| Range of articles | MCDN 1,5/...-G1-THR |
| Insulating material group | IIIa |
| Rated surge voltage (III/3) | 2.5 kV |
| Rated surge voltage (III/2) | 2.5 kV |
| Rated surge voltage (II/2) | 2.5 kV |

Base strip - MCDN 1,5/17-G1-3,5 P26THR - 1953868

Technical data

General

| | |
|---|--------------------|
| Rated voltage (III/3) | 160 V |
| Rated voltage (III/2) | 160 V |
| Rated voltage (II/2) | 250 V |
| Connection in acc. with standard | EN-VDE |
| Nominal current I _N | 8 A |
| Maximum load current | 8 A (per position) |
| Insulating material | LCP |
| Inflammability class according to UL 94 | V0 |
| Color | black |
| Number of positions | 17 |

Classifications

eCl@ss

| | |
|------------|----------|
| eCl@ss 4.0 | 272607xx |
| eCl@ss 4.1 | 27260701 |
| eCl@ss 5.0 | 27260701 |
| eCl@ss 5.1 | 27260701 |
| eCl@ss 6.0 | 27260704 |
| eCl@ss 7.0 | 27440402 |
| eCl@ss 8.0 | 27440402 |

ETIM

| | |
|----------|----------|
| ETIM 3.0 | EC001121 |
| ETIM 4.0 | EC002637 |
| ETIM 5.0 | EC002637 |

UNSPSC

| | |
|---------------|----------|
| UNSPSC 6.01 | 30211810 |
| UNSPSC 7.0901 | 39121409 |
| UNSPSC 11 | 39121409 |
| UNSPSC 12.01 | 39121409 |
| UNSPSC 13.2 | 39121409 |

Approvals

Approvals

Approvals

UL Recognized / cUL Recognized / VDE Gutachten mit Fertigungsüberwachung / EAC / cULus Recognized

Base strip - MCDN 1,5/17-G1-3,5 P26THR - 1953868

Approvals

Ex Approvals

Approvals submitted

Approval details

| | | |
|--------------------|-------|-------|
| UL Recognized | | |
| | B | D |
| Nominal current IN | 8 A | 8 A |
| Nominal voltage UN | 150 V | 150 V |

| | | |
|--------------------|-------|-------|
| cUL Recognized | | |
| | B | D |
| Nominal current IN | 8 A | 8 A |
| Nominal voltage UN | 150 V | 150 V |

| | |
|---|-------|
| VDE Gutachten mit Fertigungsüberwachung | |
| Nominal current IN | 8 A |
| Nominal voltage UN | 160 V |

EAC

| | |
|------------------|--|
| cULus Recognized | |
|------------------|--|

Accessories

Accessories

Coding element

Base strip - MCDN 1,5/17-G1-3,5 P26THR - 1953868

Accessories

Coding profile - CP-MSTB - 1734634

Coding profile, is inserted into the slot on the plug or inverted header, red insulating material



Labeled terminal marker

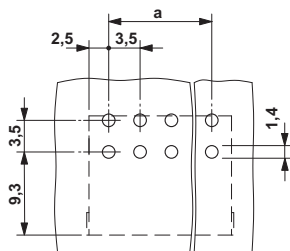
Marker card - SK 3,81/2,8:FORTL.ZAHLEN - 0804109



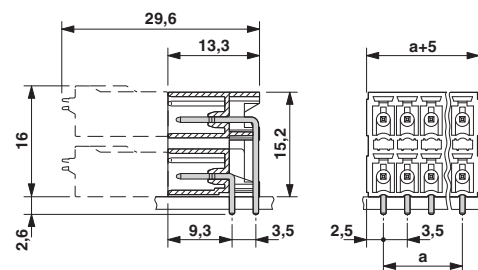
Marker card, Card, white, labeled, Horizontal: Consecutive numbers 1 - 10, 11 - 20, etc. up to 91 - (99)100, Mounting type: Adhesive, for terminal block width: 3.81 mm, Lettering field: 3.81 x 2.8 mm

Drawings

Drilling diagram



Dimensioned drawing



*) ≤ 8 -pos. = 1.3 / > 8 -pos. = 1.4