

Fiberframe Lite



Characteristics

- Standard 19" 1U size
- Robust steel construction
- Telescopic drawer with tilt of 15°
- Multifunctional back plate
- Up to 48 fibers per 1U
- ACS splice cassette technology accepting up to 24 fibers per cassette
- Optional zero space cable management bar

Flexible fiber management

The Fiberframe Lite is a 19" patch panel made from solid steel which allows the user to splice or patch various cables and cable systems in a standard 1U height 19" frame. It can accommodate up to 24 adapters such as SC simplex, LC/LX.5 duplex. With the latter, a density of up to 48 fibers per 1U can be achieved.

The multifunctional back plate allows the user to bring different cables and cable systems into the back of the panel without having to exchange various back plates. A telescopic drawer ensures the access to the back of the connectors and to the splice cassettes.

For splice applications, the well-known ACS splice cassette accommodates up to 24 fibers per cassette using either heat shrink or sandwich splice protectors. The cassette allows the user to store fiber overlength neatly and securely within the cassette and the hinge mechanism ensures the access to any cassette without tools.

Each housing is delivered with a mounting kit (M5), Velcro straps and cable ties.

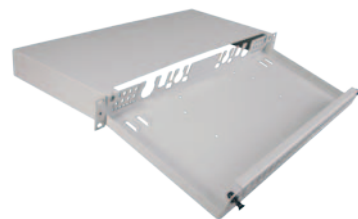
Technical data

Attribute	Value
Dimensions (W × D × H)	448 x 200 x 44 mm 17.64 x 7.87 x 1.73 in
Drawer tilt (pulled out)	15°
Rack height unit	1U
Adapter types	LC, LX.5, SC
Capacity	48 fibers with LC/LX.5 connectivity 24 fibers with SC connectivity 2 ACS splice cassettes including pigtail management
ACS splice cassette capacity	24 splices with heat shrink or sandwich splice protection technology, with storage area for bare fibers
Material	steel powder coated
Weight (empty)	2.4 kg/5.29 lb
Colour	grey (RAL 7035)
Free of halogen	yes
2011/65/EC (RoHS)	fully compliant

For optical performance classes, see table on page 35.

The Fiberframe Lite products will be available as of Q1/2016.

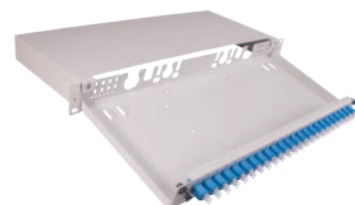
Fiberframe Lite – unpopulated



Ordering information

Description	Item no.
For 24 × SC LC duplex, LX.5 duplex or SC simplex	85063206

Fiberframe Lite, patch variant – including flangeless adapters



Ordering information

Description	Item no.
24 × LC duplex adapters, blue	85063226
24 × LC duplex adapters, green	85063227
24 × LC duplex adapters, beige	85063228
24 × SC simplex adapters, blue	85063229
24 × SC simplex adapters, green	85063231

Fiberframe Lite, splice variant – including flangeless adapters, pigtails, splice cassettes and splice protector holders (sandwich/heat shrink)

Splice protectors must be ordered separately (see next page).



Ordering information


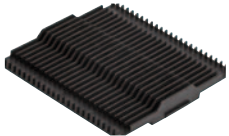



Description	Item no.
24 × LC duplex adapters, blue, with 48 × LC/UPC SM standard pigtails, no colour coding	85063232
24 × LC duplex adapters, green, with 48 × LC/APC SM standard pigtails, no colour coding	85063236
24 × LC duplex adapters, beige, with 48 × LC MM OM2 pigtails, no colour coding	85064744
24 × SC simplex adapters, blue, with 24 × SC/UPC SM standard pigtails, no colour coding	85064745
24 × SC simplex adapters, green, with 24 × SC/APC SM standard pigtails, no colour coding	85064746

If you need a configuration that is not listed above, please check the order code on page 34 and do not hesitate to contact us for your inquiry.

Fiberframe Lite – accessories




Splice accessories

Ordering information

Description	Packing unit	Order unit (multiple of)	Item no.	Picture
ACS splice cassette accepting up to 24 splices	1	1	84123330	
ACS splice cassette cover	1	1	84123617	
Sandwich splice protector holder, 24 way	1	1	84103969	
Shrink splice protector holder, 24 way	1	1	84123618	
Heat shrink splice protector, dimension: $\varnothing 1.5 \times 40$ mm	100	100	84059763	
Sandwich splice protector, dimension: $1.2 \times 3.2 \times 30$ mm	150	150	23218558	

Cable management

Ordering information

Description	Packing unit	Order unit (multiple of)	Item no.	Picture
Patch cord management bar	1	1	85063160	
Patch cord management bracket, grey/blue	1	1	84093679	
M20 \times 1.5 cable gland for cables with diameter 7.0 to 13.0 mm	1	1	84118394	
M20 locknut	1	1	85068092	
M25 \times 1.5 cable gland for cables with diameter 9.0 to 17.0 mm	1	1	84039078	
M25 locknut	1	1	85064421	