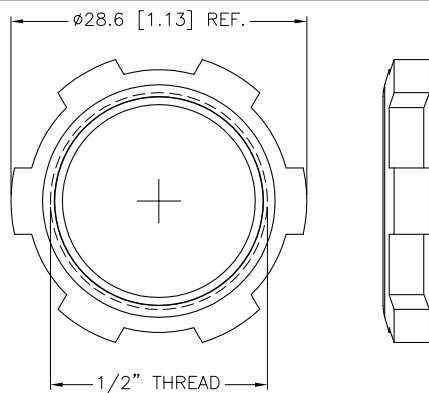


FEMALE END VIEW

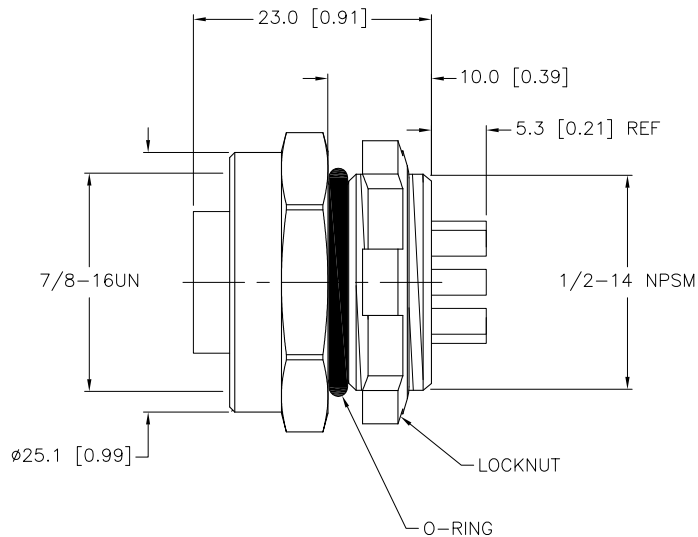
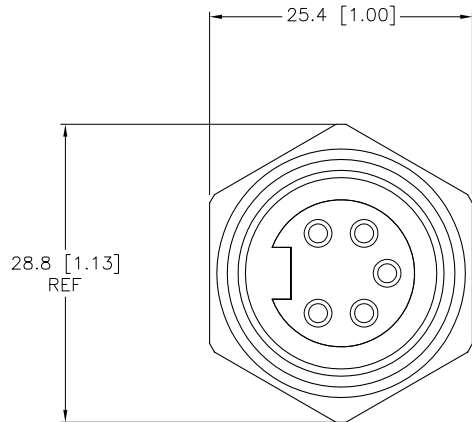


LOCKNUT



SPECIFICATIONS

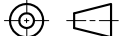
CONTACT CARRIER MATERIAL	TPU
CONTACT MATERIAL/PLATING	BRASS/GOLD
HOUSING/LOCKNUT MATERIAL/PLATING	BRASS/NICKEL
O-RING MATERIAL	NITRILE
RATED CURRENT [A]	9.0 A
RATED VOLTAGE [V]	600 V
TERMINATION, SOLDER CUPS	UP TO 16 AWG MAX
TEMPERATURE RANGE	-40°C to +80°C (-40°F to +176°F)
PROTECTION CLASS	MEETS NEMA 1,3,4,6P AND IEC IP67



SOURCE DRAWING - FOR REFERENCE ONLY

NOTES:

1. "W/LN" DESIGNATES LOCKNUT INCLUDED WITH RECEPTACLE.

RELATED DOCUMENTS		3RD ANGLE PROJECTION		<div>THIS DRAWING IS CONFIDENTIAL AND THE PROPERTY OF TURCK INC. USE OF THIS DOCUMENT WITHOUT WRITTEN PERMISSION IS PROHIBITED.</div> <div>TURCK inc <i>High Technology Sensors and Automation Controls</i></div> <div>3000 CAMPUS DRIVE MINNEAPOLIS, MN 55441 1-800-544-7769 (763) 553-7300 (763) 553-0708 fax turck.com</div>				
1. 2. 3. 4.								
MATERIAL		DRFT RDS		DATE 10/06/11		DESCRIPTION RKFL 56 W/LN		
SEE SPECIFICATIONS		APVD A.A.		SCALE 1=.8				
FINISH		UNIT OF MEASUREMENT MILLIMETER [INCH] DO NOT SCALE THIS DRAWING		IDENTIFICATION NO.				REV
SEE SPECIFICATIONS				U2-19334				A
		FILE: U2-19334				SHEET 1 OF 4		