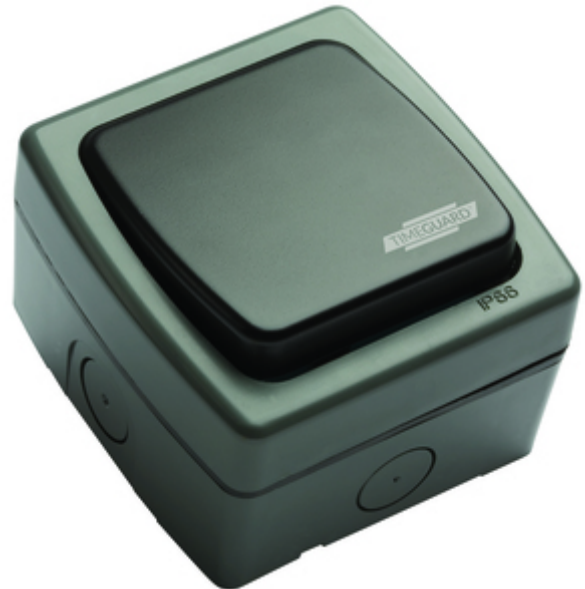


TGVL05

Weathersafe Extreme Single Gang Switch (DP)

Features & Benefits

- Backlit neon illuminates switch for dark areas.
- Multiple 20mm knock outs.
- IP66 weatherproof rating.
- Registered design 000522784 0002.



Technical Data

Operating Voltage	230V AC
Frequency	50Hz
Installation Type	Surface
Earth Class Rating	Class I
Operating Temperature	-5°C to 55°C
Ingress Protection Rating	IP66
Switch type	Double Pole
Mounting Hole Centres (mm)	72 (Top/Bottom), 68 (Left/Right)
Switch rating	20A (4.6kW) 20AX
Cable Capacity (mm ²)	x3 2.5mm ² Cables
Cable Entry(s)	(Multiple M20 Threaded Screw-Outs Top/Bottom/Sides)

Data sheet

TGVL05

Safety / Weathersafe Extreme

General

Weight (g)	192.6
Height (mm)	96
Width (mm)	92
Depth (mm)	66
Body Construction	Polycarbonate (Impact Resistant)
Product Colour	Grey (Body), Black (Button)
EAN Number	5012483010334
Guarantee Period	3 Years

Line Diagrams

