

Bocube Alu

Enclosure with membrane lid, light grey, hinged



BA 281706 F-7035

Order no.: 00126325

* = Available on request.

Characteristics

Colour of enclosure group
Light grey, similar to RAL 7035

Colour of enclosure group
Light grey

Protection class
IP 66, 68 - 1,2m (2 hours), 69

Enclosure Material

Enclosure: GD Al Si 12, seal PU foamed;

Hinges / covers: Al Mg Si 0.5 powder-coated / natural-coloured anodised

The materials correspond to requirements set R1 or R7 acc. to DIN EN 45545-2 of hazard level HL3.

Scope of delivery

enclosure incl. hinge and fixing material

Important!

To compensate for pressure when temperatures change and cause moisture in the enclosure, we recommend that you use a pressure compensation element.

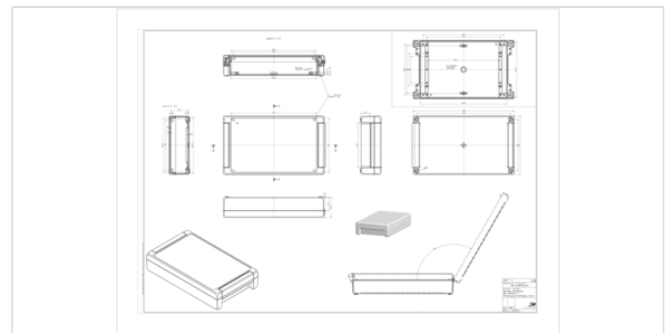
» Additional information

Technical documentation / Downloads

Dimensions

Dimensions
299 x 173 x 60 mm

Product drawing



Technical drawings

3D product data in STEP format: Registration necessary

Product drawing in PDF format: 00126325 BA-281706-F-70353D.pdf (1.5 MB)

Product drawing in DXF format: 00126325 BA-281706-F-7035.dxf (3.0 MB)

Drawing for mechanical processing: 00126325 BA-281706-F-7035-G.dxf (2.1 MB)

Milling contours are shown here as a DXF file. (Sub D, USB, HDMI, cable glands, ...)

Works Test Certificates

690 WPZ-Bocube-Alu DE.pdf (178.0 KB)

690 WPZ-Bocube-Alu EN.pdf (172.5 KB)

Product information

Bocube Alu GB.pdf (1.3 MB)

Assembly Instructions

Bocube-Alu BA Gehaeusemontage Enclosure Assembly 00911501.pdf (183.5 KB)

Matching accessories



Wall brackets

00500305 BA WL 17 - 7035 For ..17.. Light grey



Quick-release fastener

00430305 BA 17 SV-7035 For ..17.. Light grey
00430309 BA 17 SV-C-0 For ..17.. anodized



Pressure compensation membrane DAE

52011000 DAE-D11 Self-adhesive membrane ø 11 mm



Mounting panels, laminated paper, 2 mm

00606300 BA MH 2817 For BA 2817..



DIN rails DIN EN 60715 TH 15, galvanised steel

22152302 TS 15 For BA 2817..



DIN rails DIN EN 60715 G 32, galvanised steel

22322302 TS 32 For BA 2817..



DIN rails DIN EN 60715 TH 35, galvanised steel

22352302 TS 35

For BA 2817..



Screws (SHR) and distance bolts (DIBLZ) for mounting bosses in plastic enclosures

59005049 SHR Z M4x8

KD = 8



Handle set for Bocube Alu, aluminium, powder-coated, silver

00510306* BA GR 17-9006

For ..17..