

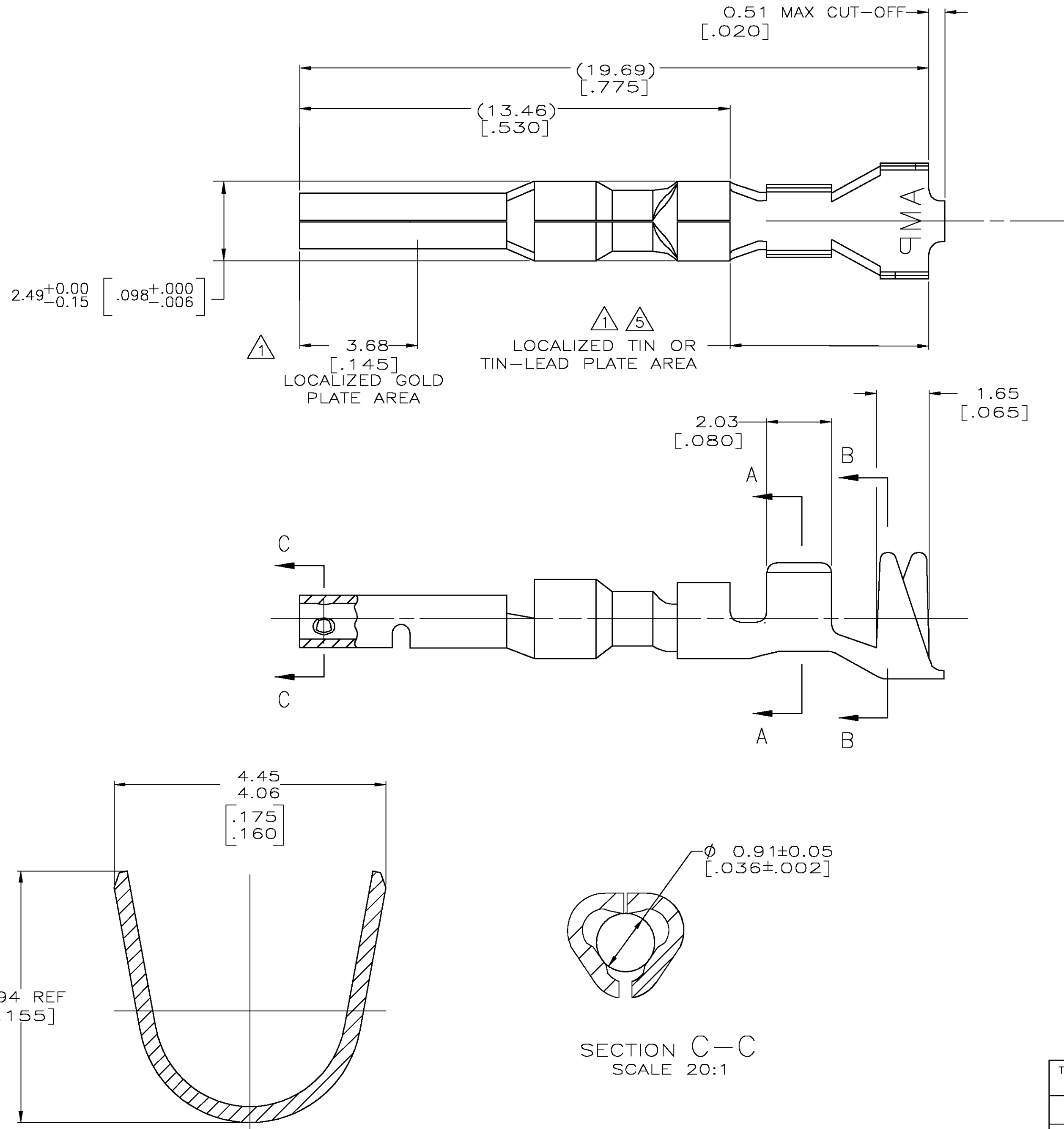
LOC	DIST	REVISIONS				
		P	LTR	DESCRIPTION	DATE	DWN
CM	00		D	REVISED PER EC 0G3B-0387-03	21MAY03	SC

D

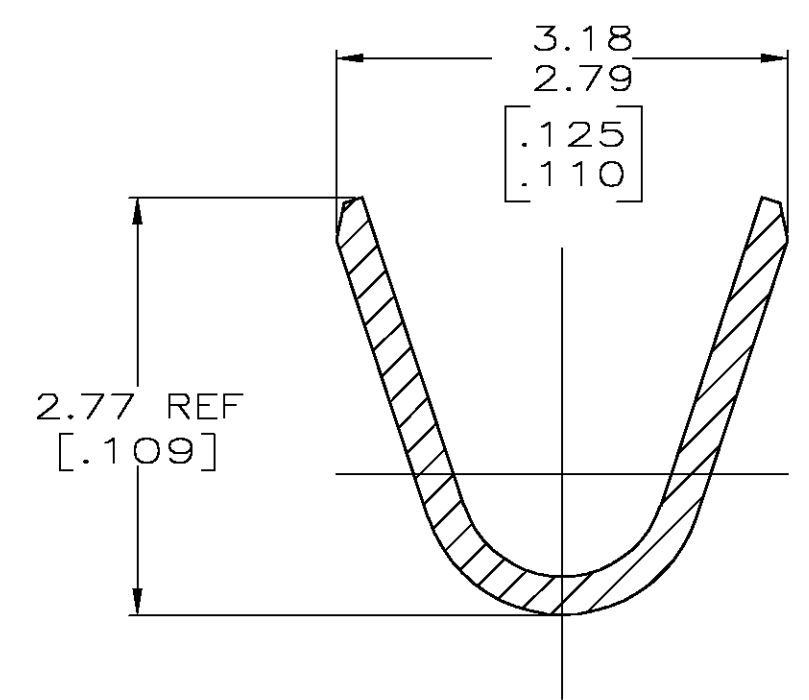
C

B

A



- 1 0.00076[.000030] MIN. GOLD IN LOCALIZED GOLD PLATE AREA AND 0.00254-0.00635[.000100-.000250] BRIGHT TIN-LEAD IN LOCALIZED TIN-LEAD PLATE AREA OVER 0.00127[.000050] MIN. NICKEL.
2. WIRE RANGE: 0.5-1.4MM<sup>2</sup> (20-16 AWG).
3. INSULATION RANGE: 2.01-3.20[.079-.126] DIA.
4. DIMENSIONS IN BRACKETS ARE IN INCHES.
- 5 0.00076[.000030] MIN. GOLD IN LOCALIZED GOLD PLATE AREA AND 0.00254-0.00635[.000100-.000250] BRIGHT TIN IN LOCALIZED TIN PLATE AREA OVER 0.00127[.000050] MIN. NICKEL.



SECTION A-A  
SCALE 20:1

5	0.25[.010] BRASS	1-794231-0
1	0.25[.010] BRASS	794231-3
PRE-TIN	0.25[.010] BRASS	794231-1

THIS DRAWING IS A CONTROLLED DOCUMENT.		DWN S. CARPENTER 21MAY2003	<b>tyco</b> Electronics Tyco Electronics Corporation Harrisburg, PA 17105			
DIMENSIONS: INCHES		CHK C. JONES 21MAY2003				
	TOLERANCES UNLESS OTHERWISE SPECIFIED:	APVD C. JONES 21MAY2003	NAME SOCKET, MINI UNIVERSAL MATE-N-LOK™ 2			
	0 PLC ± - 1 PLC ± - 2 PLC ± - 3 PLC ± 0.15 [.006] 4 PLC ± - ANGLES ± - FINISH	PRODUCT SPEC	RESTRICTED TO -			
MATERIAL SEE TABLE	SEE TABLE	APPLICATION SPEC	SIZE A2	CAGE CODE 00779	DRAWING NO C=794231	REV D
		WEIGHT	SCALE 10:1 SHEET 1 OF 1			
		CUSTOMER DRAWING				

794231

A