

CRITCHLEY 9003

ISSUE C - 23/03/98

Critchley Components Limited

PO Box 246

Queens Drive Industrial Estate

Nottingham NG2 1NQ

United Kingdom

Tel: +44 (0) 115 986 1126

Fax: +44 (0) 115 986 0563

A compact encapsulated line isolating transformer, BABT, UL and BSi certified. Tested and approved in accordance with the requirements of EN41003: 1997, EN60950: 1992 (IEC950), EN60065: 1994 and AS/NZS 3260:1993 (BSi Certificate Nos. 7082 and 7456), UL1459, UL1950 and CAN/CSA 234-M90 (E171368 [M]).

ELECTRICAL SPECIFICATION

DC Resistance:

Primary $45\Omega \pm 15\%$

Secondary $45\Omega \pm 15\%$

Series O/C Inductance:

measured @ 250mV

200Hz >2.0H

2000Hz >0.5H

4000Hz >0.3H

Series O/C AC Resistance:

measured @ 250mV

200Hz >2.0K Ω

2000Hz >8.0K Ω

4000Hz >10.5K Ω

Leakage Inductance:

200Hz - 4000Hz

6mH max.

Harmonic Distortion:

200Hz, -3dBm on primary,

600 Ω load on secondary.

2f: -67dB max.

3f: -64dB max.

TDdBm: -62dBm max.

Insertion Loss:

200Hz - 4000Hz

(600 Ω ref., 600 Ω load)

1.1dB max.

Frequency Response:

200Hz - 4000Hz

(600 Ω ref., 600 Ω load)

± 0.3 dB max.

Return Loss:

300Hz - 4000Hz

>21dB (when using recommended circuit).

Max. DC current

0mA

ENVIRONMENTAL & SAFETY SPECIFICATION

Voltage Breakdown:

Tested according to

EN60950 part 5.3.2.

(test voltage: 3000 Volts).

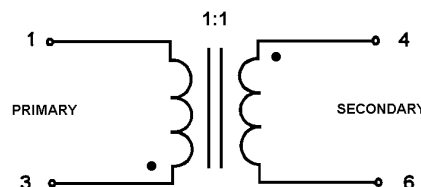
Storage temperature:

Tested to IEC 68-2-14:1984

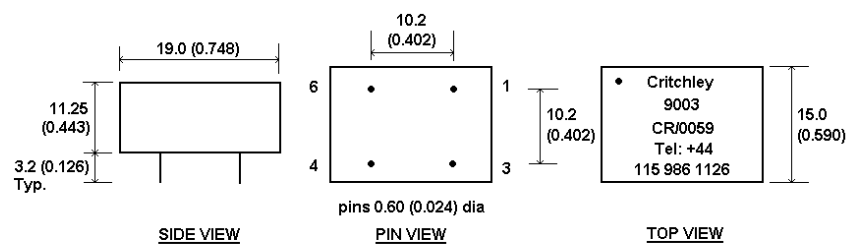
test procedure Nb.

(temperature range -25°C to +85°C).

CIRCUIT SCHEMATIC



MECHANICAL SPECIFICATION



Dimensions in mm (inches) tolerance ± 0.25 (0.01)

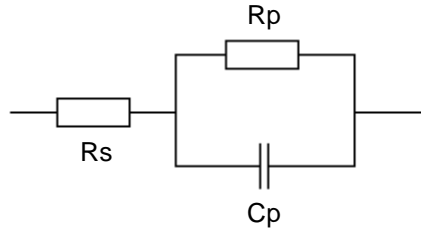


As this product is covered by a BABT Certificate of Recognition (CR0059) approvals time will be reduced.

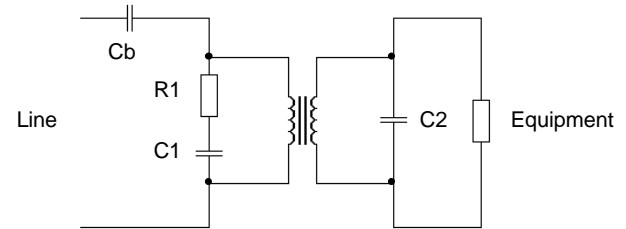


Application Circuits

Reference Impedance (ETS300 001):



Circuit description:



Country	Ref. Impedance Values				Recommended Circuit Values			
	R_s	R_p	C_p	C_b	R_1	C_1	C_2	Equipment
	(Ω)	(Ω)	(nF)	(μF)	(Ω)	(nF)	(nF)	(Ω)
UK, New Zealand	370	620	310	3.3	*576	100	15	*1020
Germany, Switzerland	220	820	115	2.2	220	68	22	910
Australia	220	820	120	2.2	560	68	22	910
Sweden, Pan European (TBR 21)	270	750	150	3.3	300	68	18	950
Norway	120	820	110	3.3	220	68	22	910
Austria, Belgium, Canada, France, Finland, Hong Kong, Ireland, Italy, Japan, Netherlands, Portugal, Singapore, Taiwan, USA, Spain, Denmark	600 Ω			6.8	-	-	10	*549

Notes: *E96 series resistor values.

Country reference networks are subject to change and interpretation. The above is intended as an initial reference and should you require more information for a network not shown please contact your local sales office. Software models are available on disk for all components.