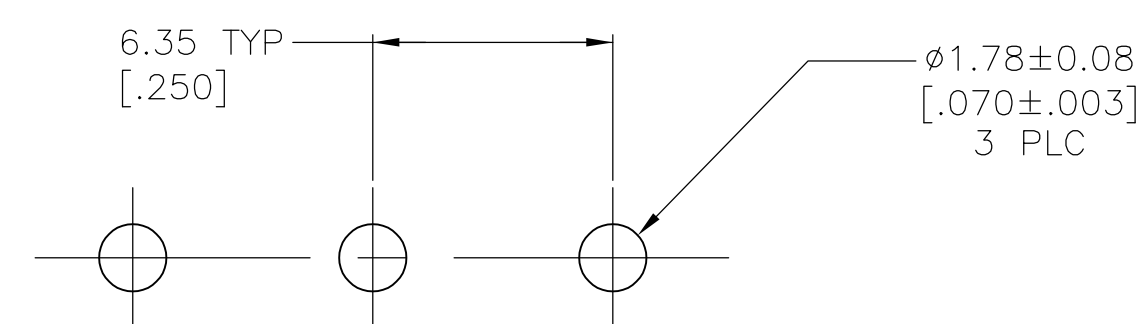
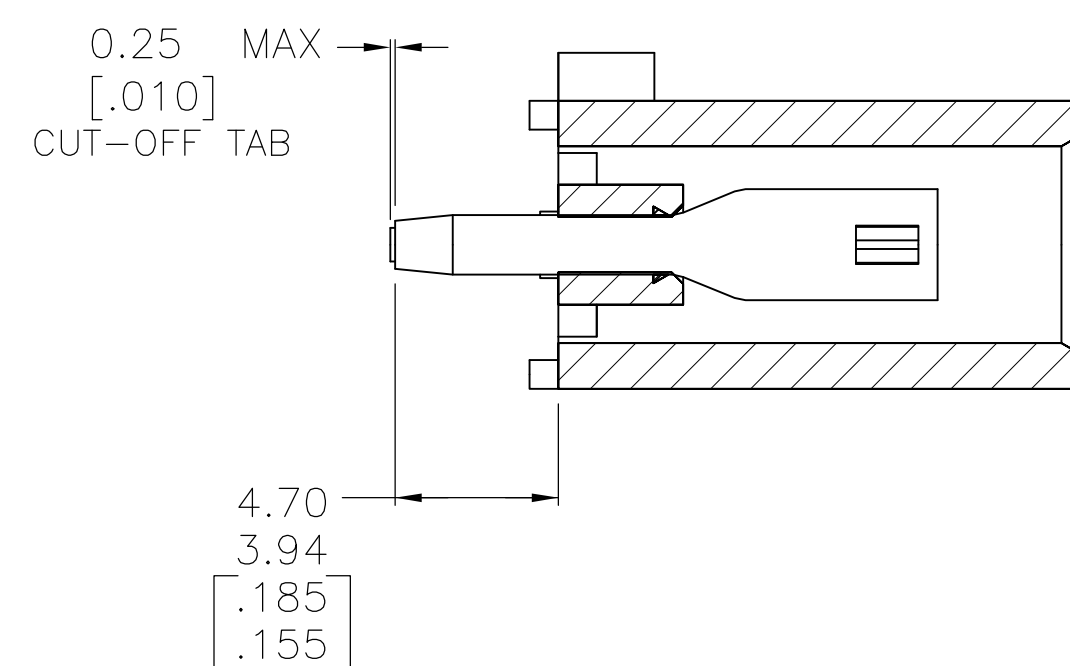
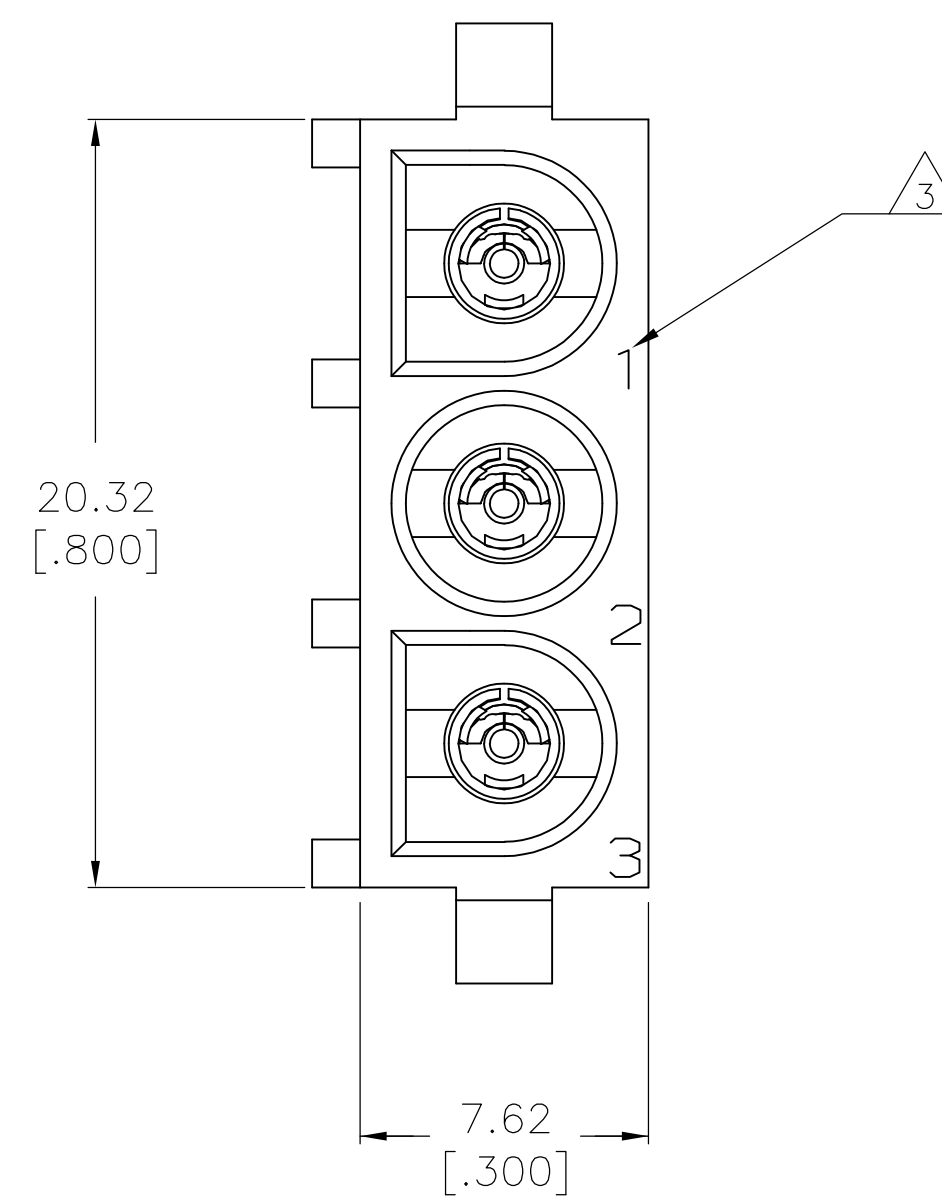
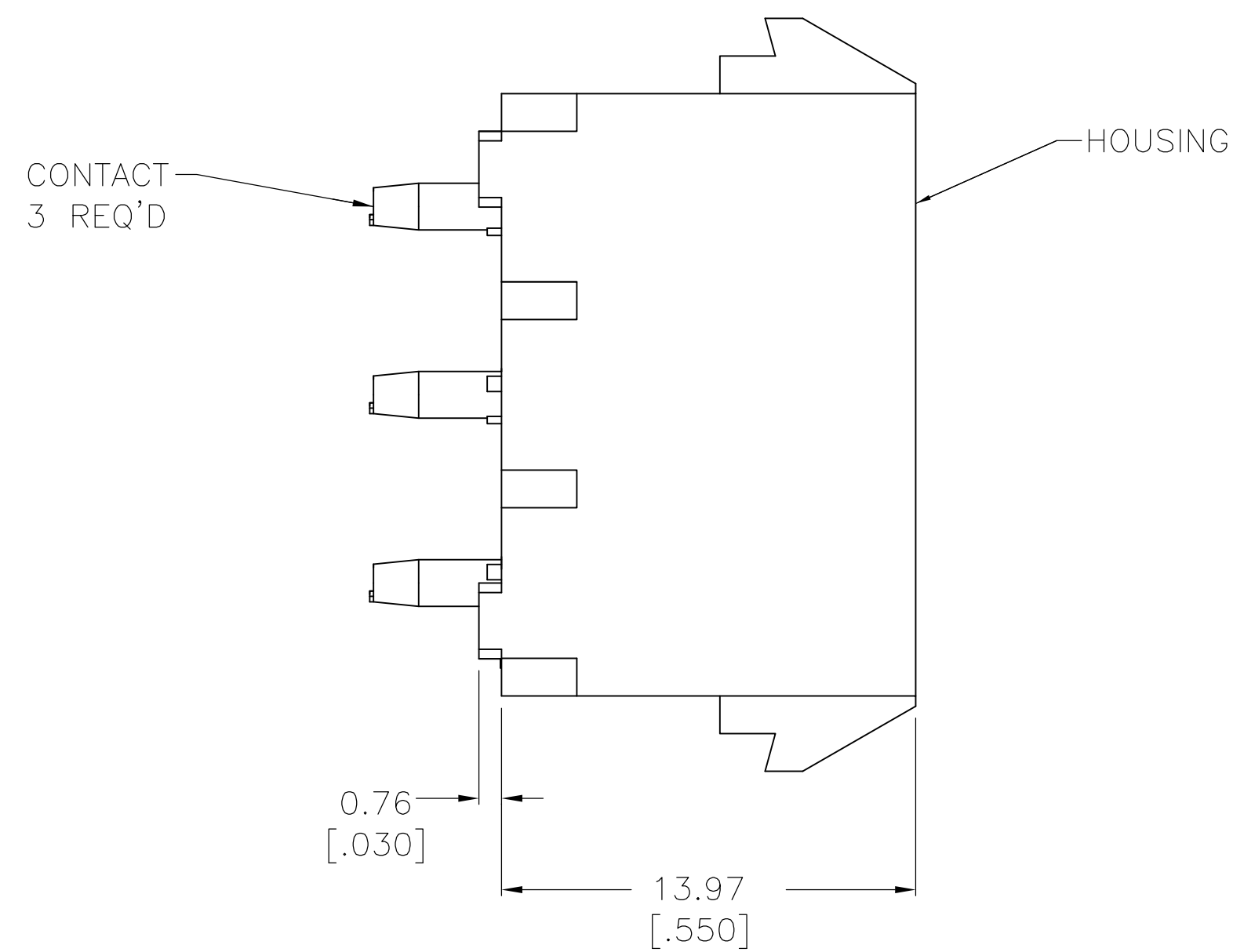
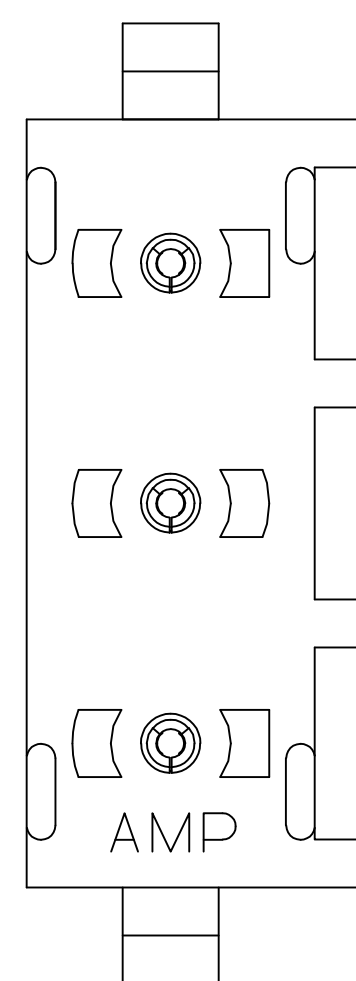
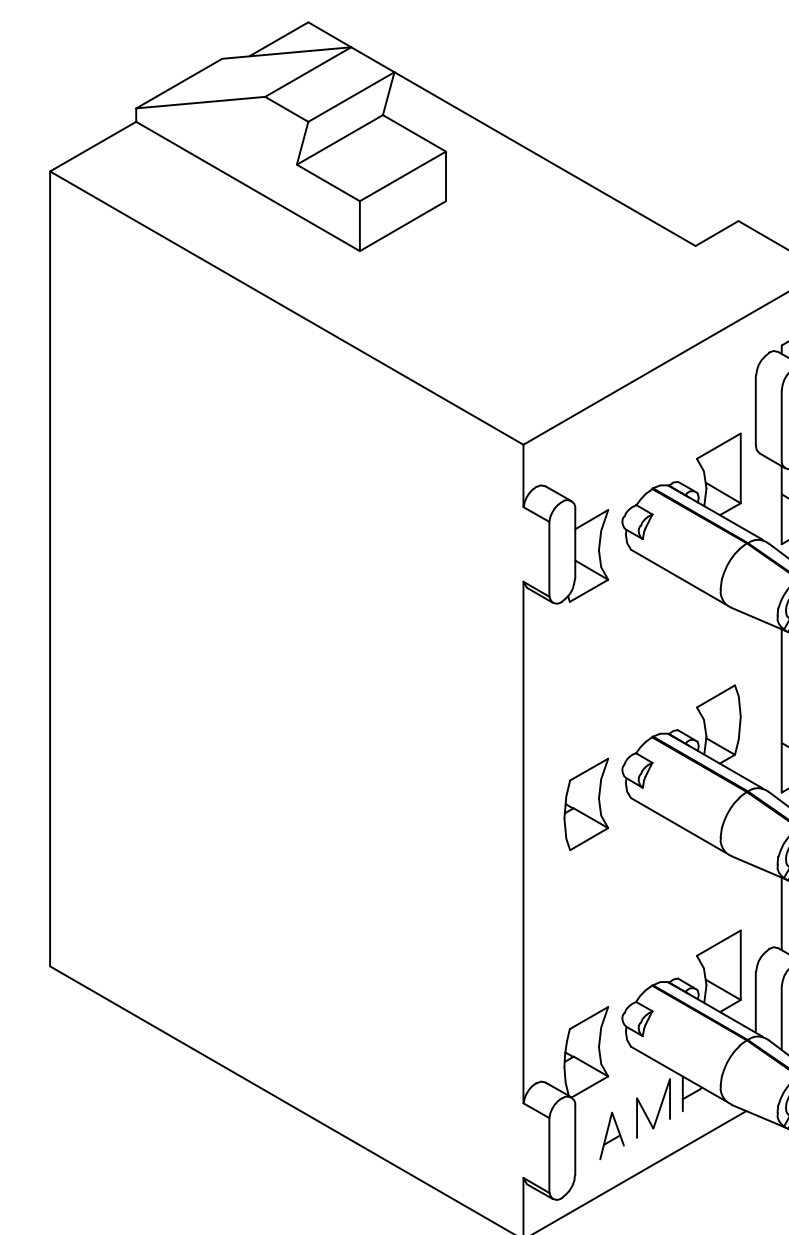


LOC	DIST	REVISIONS					
CM	00	P	LTR	DESCRIPTION	DATE	DWN	APVD
			A	REVISED PER ECR-16-002640	10MAR2016	BW	EW





RECOMMENDED MOUNTING HOLE PATTERN
FOR 1.57 [.062] THICK P.C. BOARD



3-DIMENSIONAL MODEL NTS

- 1 PARTS COMPLY TO TYCO ELECTRONICS SOLDERABILITY SPECIFICATION 109-11-2.
- 2 DIMENSIONS IN BRACKETS ARE IN INCHES.
- 3 CIRCUIT IDENTIFICATION CHARACTERS ARE ADJACENT TO THE INDICATED CAVITIES, BUT LOCATION AND ORIENTATION MAY DIFFER FROM PRINT.
- 4 FLAMMABILITY UL V-0 FOR THICKNESS 0.4, 0.45, 0.8, 1.6, AND 3.0 PER IEC 60695-11-10.
- 5 GLOW WIRE FLAMMABILITY (GWI): 960°C FOR THICKNESS 0.45, 0.8, 1.6, AND 3.0 PER IEC 60695-2-12.
- 6 GLOW WIRE IGNITION (GWI): 825°C FOR THICKNESS 0.45, 800°C FOR THICKNESS 0.8, 775°C FOR THICKNESS 1.6 AND 3.0 PER IEC 60695-2-13.

PHOSPHOR BRONZE, PRE-TIN		NYLON, UL V-0 GW, NATURAL		1969800-1	
		HOUSING MATERIAL		PART NO	
THIS DRAWING IS A CONTROLLED DOCUMENT.		DWN BASVESH WARAD 280C/2015	 TE Connectivity		
<div>DIMENSIONS: mm [INCHES]</div> <div></div>		CHK WICKES, EVAN 280C/2015			
		APVD WICKES, EVAN 280C/2015			
		PRODUCT SPEC —			
<div>TOLERANCES UNLESS OTHERWISE SPECIFIED:</div> <div>0 PLC ± —</div> <div>1 PLC ± 0.13 [.005]</div> <div>2 PLC ± —</div> <div>3 PLC ± —</div> <div>4 PLC ± —</div> <div>DIMENSIONS ± 0.30*</div>		APPLICATION SPEC —	NAME SOCKET HEADER ASSEMBLY, 3 CIRCUIT UNIVERSAL MATE-N-LOK(TM)		
		SIZE A1	CAGE CODE 00779	DRAWING NO C-1969800	RESTRICTED TO —
		MATERIAL SEE TABLE		FINISH SEE TABLE	
CUSTOMER DRAWING		SCALE 5:1 SHEET 1 OF 1 REV A			