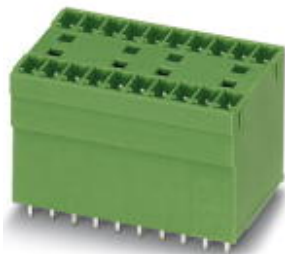


Base strip - MCDV 1,5/13-G1-3,81 - 1847848

Please be informed that the data shown in this PDF Document is generated from our Online Catalog. Please find the complete data in the user's documentation. Our General Terms of Use for Downloads are valid (<http://phoenixcontact.com/download>)



Header, Nominal current: 8 A, Rated voltage (III/2): 160 V, Number of positions: 13, Pitch: 3.81 mm, Color: green, Contact surface: Tin, Mounting: Soldering, In combination with MCV plug components, both an MCVW and an MCVR plug must be used.

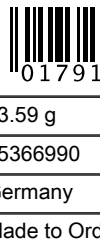
The figure shows a 10-pos. version with 20 contacts

Why buy this product

- Without offset levels, for flush installation on the front of devices
- Plug-in direction vertical to the PCB
- Low-profile double-level pin strips with high contact density



Key Commercial Data

| | |
|--------------------------------------|--|
| Packing unit | 50 pc |
| GTIN |  4 017918 113964 |
| Weight per Piece (excluding packing) | 13.59 g |
| Custom tariff number | 85366990 |
| Country of origin | Germany |
| Note | Made to Order (non-returnable) |

Technical data

Dimensions

| | |
|--------------------------|--------------|
| Length | 22.7 mm |
| Pitch | 3.81 mm |
| Dimension a | 45.72 mm |
| Constructional height | 22 mm |
| Length of the solder pin | 3.4 mm |
| Pin dimensions | 0,8 x 0,8 mm |
| Hole diameter | 1.2 mm |

General

| | |
|---------------------------|-----------------|
| Range of articles | MCDV 1,5/...-G1 |
| Insulating material group | I |

Base strip - MCDV 1,5/13-G1-3,81 - 1847848

Technical data

General

| | |
|--|--------|
| Rated surge voltage (III/3) | 2.5 kV |
| Rated surge voltage (III/2) | 2.5 kV |
| Rated surge voltage (II/2) | 2.5 kV |
| Rated voltage (III/3) | 160 V |
| Rated voltage (III/2) | 160 V |
| Rated voltage (II/2) | 320 V |
| Connection in acc. with standard | EN-VDE |
| Nominal current I_N | 8 A |
| Maximum load current | 8 A |
| Insulating material | PA |
| Flammability rating according to UL 94 | V0 |
| Color | green |
| Number of positions | 13 |

Classifications

eCl@ss

| | |
|------------|----------|
| eCl@ss 4.0 | 272607xx |
| eCl@ss 4.1 | 27260701 |
| eCl@ss 5.0 | 27260701 |
| eCl@ss 5.1 | 27260701 |
| eCl@ss 6.0 | 27260704 |
| eCl@ss 7.0 | 27440402 |
| eCl@ss 8.0 | 27440402 |

ETIM

| | |
|----------|----------|
| ETIM 3.0 | EC001121 |
| ETIM 4.0 | EC002637 |
| ETIM 5.0 | EC002637 |

UNSPSC

| | |
|---------------|----------|
| UNSPSC 6.01 | 30211810 |
| UNSPSC 7.0901 | 39121409 |
| UNSPSC 11 | 39121409 |
| UNSPSC 12.01 | 39121409 |
| UNSPSC 13.2 | 39121409 |

Approvals

Approvals

Base strip - MCDV 1,5/13-G1-3,81 - 1847848

Approvals

Approvals

CSA / VDE Gutachten mit Fertigungsüberwachung / cUL Recognized / IECCEB Scheme / CCA / EAC / cULus Recognized

Ex Approvals

Approvals submitted

Approval details

| | | |
|--------------------|-------|-------|
| CSA | | |
| | B | D |
| Nominal current IN | 8 A | 8 A |
| Nominal voltage UN | 300 V | 300 V |

| | |
|---|-------|
| VDE Gutachten mit Fertigungsüberwachung | |
| Nominal current IN | 8 A |
| Nominal voltage UN | 160 V |

| | | |
|--------------------|-------|-------|
| cUL Recognized | | |
| | B | D |
| Nominal current IN | 8 A | 8 A |
| Nominal voltage UN | 300 V | 300 V |

| | |
|--------------------|-------|
| IECCEB Scheme | |
| Nominal current IN | 8 A |
| Nominal voltage UN | 160 V |

| | |
|--------------------|-----|
| CCA | |
| Nominal current IN | 8 A |

Base strip - MCDV 1,5/13-G1-3,81 - 1847848

Approvals

| | |
|--------------------|-------|
| Nominal voltage UN | 160 V |
|--------------------|-------|

| |
|-----|
| EAC |
|-----|

| | | |
|--------------------|-------|-------|
| cULus Recognized | | |
| | B | D |
| Nominal current IN | 8 A | 8 A |
| Nominal voltage UN | 300 V | 300 V |

Accessories

Accessories

Coding element

Coding profile - CP-MSTB - 1734634

Coding profile, is inserted into the slot on the plug or inverted header, red insulating material



Labeled terminal marker

Marker card - SK 3,81/2,8:FORTL.ZAHLEN - 0804109



Marker card, Card, white, labeled, Horizontal: Consecutive numbers 1 - 10, 11 - 20, etc. up to 91 - (99)100, Mounting type: Adhesive, for terminal block width: 3.81 mm, Lettering field: 3.81 x 2.8 mm

Additional products

Printed-circuit board connector - MC 1,5/13-ST-3,81 - 1803688



Plug component, Nominal current: 8 A, Rated voltage (III/2): 160 V, Number of positions: 13, Pitch: 3.81 mm, Connection method: Screw connection, Color: green, Contact surface: Tin

Base strip - MCDV 1,5/13-G1-3,81 - 1847848

Accessories

Base strip - IMCV 1,5/13-G-3,81 - 1875535



Header, Nominal current: 8 A, Rated voltage (III/2): 160 V, Number of positions: 13, Pitch: 3.81 mm, Color: green, Contact surface: Tin, Mounting: Soldering

Printed-circuit board connector - MCVW 1,5/13-ST-3,81 - 1827088



Plug component, Nominal current: 8 A, Rated voltage (III/2): 160 V, Number of positions: 13, Pitch: 3.81 mm, Connection method: Screw connection, Color: green, Contact surface: Tin

Printed-circuit board connector - FRONT-MC 1,5/13-ST-3,81 - 1850770



Plug component, Nominal current: 8 A, Rated voltage (III/2): 160 V, Number of positions: 13, Pitch: 3.81 mm, Connection method: Screw connection, Color: green, Contact surface: Tin

Printed-circuit board connector - MCVR 1,5/13-ST-3,81 - 1827237



Plug component, Nominal current: 8 A, Rated voltage (III/2): 160 V, Number of positions: 13, Pitch: 3.81 mm, Connection method: Screw connection, Color: green, Contact surface: Tin

Printed-circuit board connector - QC 0,5/13-ST-3,81 - 1897500



Plug component, Nominal current: 6 A, Rated voltage (III/2): 200 V, Number of positions: 13, Pitch: 3.81 mm, Connection method: Insulation displacement connection QUICKON, Color: green, Contact surface: Tin

Base strip - MCDV 1,5/13-G1-3,81 - 1847848

Accessories

Base strip - IMC 1,5/13-G-3,81 - 1862687

Header, Nominal current: 8 A, Rated voltage (III/2): 160 V, Number of positions: 13, Pitch: 3.81 mm, Color: green, Contact surface: Tin, Mounting: Soldering



Printed-circuit board connector - MCC 1/13-STZ-3,81 - 1852286

Plug component, Nominal current: 8 A, Rated voltage (III/2): 160 V, Number of positions: 13, Pitch: 3.81 mm, Connection method: Crimp connection, Color: green, Corresponding female crimp contacts with current [A] and conductor cross section range [mm²] data: 5A/MCC-MT 0,2-0,35 (1859988); 8A/MCC-MT 0,5-1,0 (1859991)



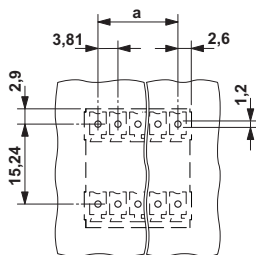
Printed-circuit board connector - FK-MCP 1,5/13-ST-3,81 - 1851151

Plug component, Nominal current: 8 A, Rated voltage (III/2): 160 V, Number of positions: 13, Pitch: 3.81 mm, Connection method: Push-in spring connection, Color: green, Contact surface: Tin



Drawings

Drilling diagram



Dimensional drawing

