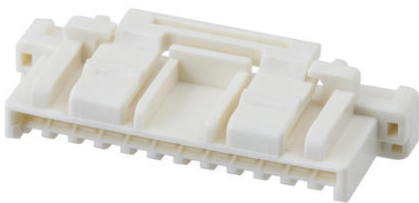




Part Number : [5025781200](#)
Product Description : CLIK-Mate Plug Housing,
1.50mm Pitch, Single Row, Positive Lock, 12 Circuits,
Natural
Series Number : 502578
Status : Active
Product Category : Connector Housings



Documents & Resources

Drawings

- [5025781200_sd.pdf](#)
- [3D Models and Design Files](#)
- [5025781200.dxf](#)
- [5025781200_stp.zip](#)

Specifications

- [AS-502578-001-001.pdf](#)
- [AS-503395-001-001.pdf](#)
- [SPK-502578-001-001.pdf](#)
- [5025780000-PS-000.pdf](#)
- [5025780001-PS-000.pdf](#)
- [5025780002-PS-000.pdf](#)
- [5025780003-PS-000.pdf](#)
- [5025781000-PS-000.pdf](#)
- [5025781002-PS-000.pdf](#)
- [5025781003-PS-000.pdf](#)
- [5025781004-PS-000.pdf](#)
- [5025780004-PS-000.pdf](#)

Product Environment Compliance

Compliance

GADSL/IMDS	Not Relevant
China RoHS	

	per SJ/T 11365-2006
EU ELV	Compliant per 2000/53/EC
Low-Halogen Status	Not Low-Halogen per IEC 61249-2-21
REACH SVHC	Not Contained per D(2024)7663-DC (21 Jan 2025)
EU RoHS	Compliant per EU 2015/863

Compliance Statements

- EU RoHS
- REACH SVHC
- Low-Halogen

Industry Documents

- IPC 1752A Class C
- IPC 1752A Class D
- Molex Product Compliance Declaration
- IEC-62474
- chemSHERPA (xml)

Substances of Interest

- PFAS

EU RoHS Certificate of Compliance

Additional Product Compliance Information

Part Details

General

Status	Active
Category	Connector Housings
Series	502578
Description	CLIK-Mate Plug Housing, 1.50mm Pitch, Single Row, Positive Lock, 12 Circuits, Natural
Application	Signal, Wire-to-Board
Product Name	CLIK-Mate
UPC	800756700922

Agency

UL	E29179
----	--------

Physical

Circuits (maximum)	12
Color - Resin	Natural
Flammability	SC-0
Gender	Plug
Glow-Wire Capable	No
Keying to Mating Part	None
Lock to Mating Part	Yes
Material - Resin	PBT
Net Weight	526.600/mg
Number of Rows	1
Packaging Type	Bag
Panel Mount	No
Pitch - Mating Interface	1.50mm
Pitch - Termination Interface	1.50mm
Polarized to Mating Part	Yes
Stackable	No
Temperature Range - Operating	-40° to +105°C

Mates With / Use With

Mates with Part(s)

Description	Part Number
1.50mm Pitch CLIK-Mate Bottom Entry Single Row PCB Receptacles	<u>503395</u>
1.50mm Pitch CLIK-Mate Right-Angle Single Row PCB Receptacles	<u>213226</u>
1.50mm Pitch CLIK-Mate Right-Angle Single Row PCB Receptacles	<u>502585</u>
1.50mm Pitch CLIK-Mate Right-Angle Single Row PCB Receptacles	<u>503175</u>
1.50mm Pitch CLIK-Mate Vertical Single Row PCB Receptacles	<u>213225</u>
1.50mm Pitch CLIK-Mate Vertical Single Row PCB Receptacles	<u>502584</u>
1.50mm Pitch CLIK-Mate Vertical Single Row PCB Receptacles	<u>503159</u>

Use with Part(s)

Description	Part Number
Pre-Crimped Lead CLIK-Mate 1.50mm Male-to-CLIK-Mate 1.50mm Male, Tin (Sn) Plating, 300.00mm Length, 24 AWG, Black	<u>797581011</u>
1.50mm Pitch CLIK-Mate Male Crimp Terminals	<u>502579</u>
1.50mm Pitch CLIK-Mate Male Crimp Terminals	<u>503429</u>
CLIK-Mate 1.50mm Pitch Male Crimp Terminals	<u>213028</u>
CLIK-Mate 1.50mm Pitch Male Crimp Terminals	<u>213029</u>
Pre-Crimped Lead Clik-Mate Male- to-Clik-Mate Male	<u>215710</u>
Pre-Crimped Lead Clik-Mate Male- to-Pigtail	<u>215711</u>