



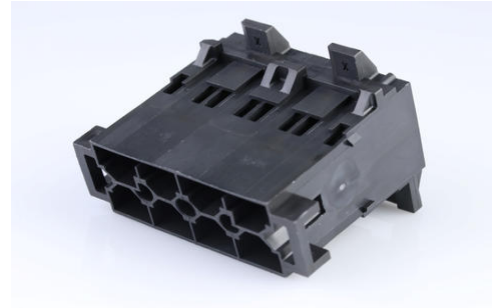
**Part Number :** [439382102](#)

**Product Description :** 10.00mm Pitch Mini-Fit Sr. Plug Housing, Dual Row, Panel Mount, 8 Circuits, Black

**Series Number :** 43938

**Status :** Active

**Product Category :** Connector Housings



---

## Documents & Resources

### Drawings

[439382102\\_sd.pdf](#)

[PK-43938-001-001.pdf](#)

[PK-45286-002-001.pdf](#)

### 3D Models and Design Files

[STEP AP242](#)

[SOLIDWORKS](#)

[Creo](#)

### Specifications

[PS-42815-001-001.pdf](#)


[TS-42815-001-001.pdf](#)

[TS-42815-004-001.pdf](#)

---

## Product Environment Compliance

### Compliance

GADSL/IMDS	Not Relevant
China RoHS	 per SJ/T 11365-2006
EU ELV	Not Relevant
Low-Halogen Status	Not Low-Halogen per IEC 61249-2-21
REACH SVHC	Not Contained per D(2025)4165-DC (25 June 2025)
EU RoHS	Compliant per EU 2015/863

## Compliance Statements

- EU RoHS
- REACH SVHC
- Low-Halogen

## Industry Documents

- IPC 1752A Class C
- IPC 1752A Class D
- Molex Product Compliance Declaration
- IEC-62474
- chemSHERPA (xml)

## Substances of Interest

- PFAS

## EU RoHS Certificate of Compliance

## Additional Product Compliance Information

---

## Part Details

### General

Status	Active
Category	Connector Housings
Series	43938
Description	10.00mm Pitch Mini-Fit Sr. Plug Housing, Dual Row, Panel Mount, 8 Circuits, Black
Application	Power, Wire-to-Wire
Product Name	Mini-Fit Sr.
UPC	800753010352

### Agency

CSA	LR19980
UL	E29179

### Physical

Circuits (maximum)	8
Color - Resin	Black
Flammability	94V-0
Gender	Plug
Glow-Wire Capable	No

Material - Resin	Polyester
Net Weight	15.538/g
Number of Rows	2
Packaging Type	Bag
Panel Mount	Yes
Pitch - Mating Interface	10.00mm
Stackable	No
Temperature Range - Operating	-40° to +105°C

### Solder Process Data

Lead-Free Process Capability	N/A
------------------------------	-----

---

### Mates With / Use With

#### Mates with Part(s)

Description	Part Number
Mini-Fit Sr. Dual Row Receptacle Housings	<u>43914</u>

#### Use with Part(s)

Description	Part Number
Mini-Fit Sr. Dual Row Terminal Position Assurance (TPA) Retainers	<u>43980</u>