

WHEEL A 200X50/60 RB SWIVEL FORK P60 + BRAKE

Wheel series A

Wheels with cast polyurethane coating 95 Sh.A on polyamide 6 center.
Wheel fitted with standard roller bearing.

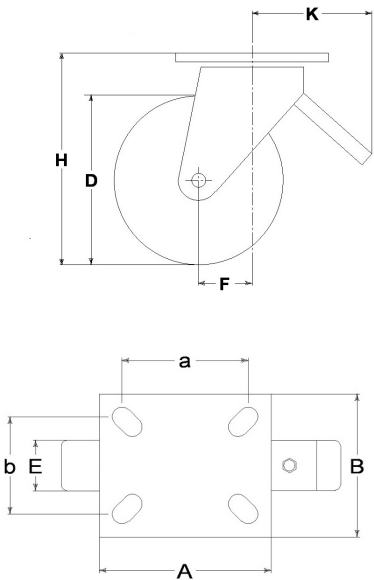
Castor series P60

P60 series, heavy duty pressed steel forks, swivel with hardened steel double races & 'water resistant' protections. Finish: zincplated.
Leading brake, total stop, adjustable.



Technical data

| | | |
|----------------------------|-----|------------|
| Wheel diameter | D | 200 mm |
| Tyre width | E | 50,0 mm |
| Bore diameter | d | 20 mm |
| Weight article | | 4,320 kg |
| Hub width | L | 60 mm |
| Overall height | H | 249 mm |
| Top plate outer dimensions | AxB | 135x110 mm |
| Bolt hole spacing | axb | 105x75 mm |
| Bolt hole spacing | axb | 105x80 mm |
| Fixing bolt diameter | g | M12 |
| Offset | F | 66 mm |
| Fork width | U | 60 mm |
| Load Capacity | | 600 kg |



Related Articles

- Spare part wheel: [4517](#)
- Basic version: [19896](#)
- Version with footguard: [19896PP](#)
- Version with trailing brake: [19896FR](#)
- Version with trailing brake and footguard: [19896FRPP](#)
- Version with leading brake and footguard: [19896FVPP](#)

GENERAL INFORMATION / RECOMMENDATIONS AND WARNINGS

The cited text and the complete catalogue in their most up-dated versions are available in the OEM's website page www.lagspa.it/downloads. The dimensions, descriptions, specifications and illustrations herein are indicative and subject to variations without notice. The fact that products are illustrated herein does not necessarily imply they are available from stock nor does it place us under any obligation to supply them.

Tests carried out refer to the original products with original accessories: the replacement of one of the components with others of different manufacture might prevent the same results from being achieved and will automatically invalidate any guarantee. Please contact our technical service concerning any special application.