

Features

- IP69
- 2000cm (20 Metre) Flexible Cable
- Completely Submergible
- N.O. Momentary
- Industrial machinery, outdoor equipment, pool & spa, marine vessels.

RS PRO Piezo Switches

RS Stock No.: 309-318



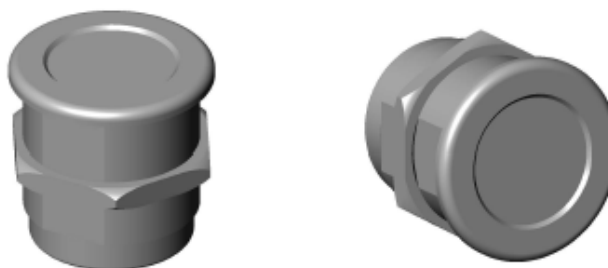
RS PRO is the own brand of RS. The RS PRO Seal of Approval is your assurance of professional quality, a guarantee that every part is rigorously tested, inspected, and audited against demanding standards. Making RS PRO the Smart Choice for our customers.

Product Description

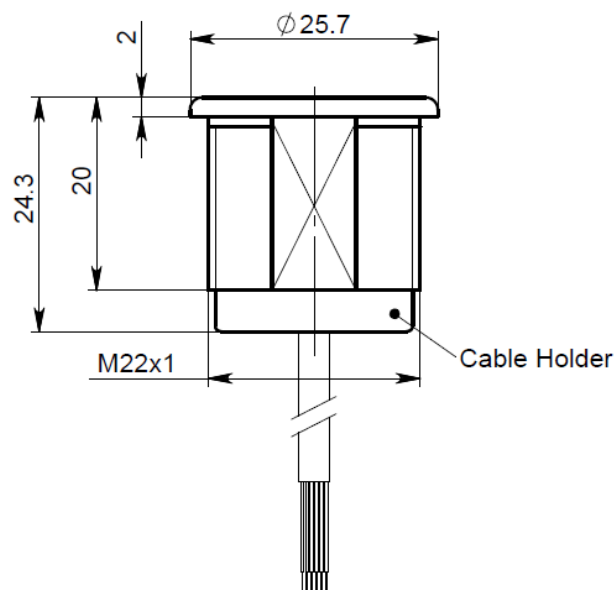
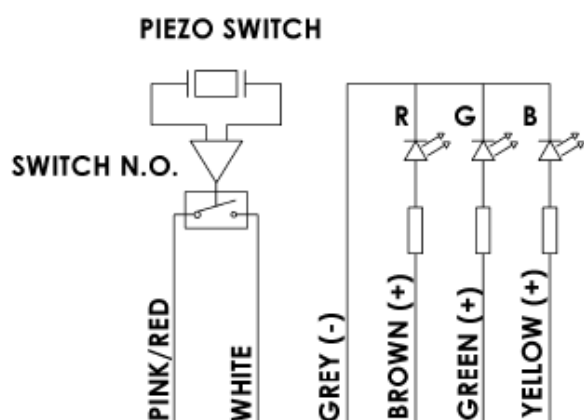
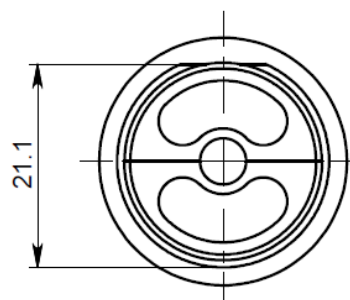
The RS Pro Illuminated Plastic Piezo Button consists of a white POM (Polyoxymethylene) one piece housing featuring a polycarbonate LED illuminated ring. It is completely submersible and exhibits high strength, hardness and rigidity resolving difficult Human-Machine Interface (HMI) issues across the toughest environmental conditions. With no moving parts it excels in high use, high-abuse areas and is impervious to snow, rain, ice and dirt as well as temperature extremes.

General Specifications

Housing Material	Polyoxymethylene
Voltage Rating	24V
Current	0.2A
Termination	Prewired
Cable Length	20 Metre (2000cm)
Cable Diameter	24AWG/0.25mm ²
Mounting Hole Diameter	22.5mm
IP Rating	IP69
Colour	White (Red, Green & Blue LED Illumination)
Operating Temperature	-20°C to +70°C
Storage Temperature	-40°C to +85°C
Cycles	50,000,000
Application	Swimming pools, Jacuzzis, Saunas



Scale 1:1



HOUSING MATL.: Plastic (POM)
 HOUSING COLOR: WHITE
 CONNECTION: Cable, 300 ± 10mm
 SWITCHING VOLTAGE: 1-24 V AC/DC
 SWITCHING CURRENT: 0.2 A
 SWITCH RESISTANCE "ON": <20 Ohm
 SWITCH RESISTANCE "OFF": >5 MOhm
 ACTUATION FORCE: 3-5 N
 MAKE IMPULSE TIME: 125-300 mSEC.
 OPER. TEMP.: -20 °C TO +70 °C
 STOR. TEMP.: -40 °C TO +85 °C

LED Operating Voltage : 24V DC max
 LEDs max current consumption at 24V:

RED	18 mA
GREEN	9 mA
BLUE	16 mA

