

## Product Data Sheet for 7268

### Product Information

<b>Product Long Code</b>	07268010
<b>Customer Facing Code</b>	7268
<b>Description</b>	WYPALL* L20 Wipers - Centrefeed Roll / White
<b>PDS Reference</b>	18/03/2015



### Packaging Configuration

<b>Case Contents</b>	6 Rolls x 400 Sheets = 2400 Sheets
<b>Commodity Code</b>	48189090



Dimension		
38.00	x	18.50
		Length x Width(cm)

### Product Description

A limited life wiper using AIRFLEX\* base sheet technology, layered fabric that's strong, thick and highly absorbent so it cleans up fast without falling apart, does the job with fewer wipers and helps reduce costs

Ideal for: light, precise wiping-up of spills, grime, dust; polishing glass and smooth surfaces; cleaning and drying tools and hands; finally assembly wiping; wiping food preparation areas.

Available as: a centrefeed Roll Control wiper system in a quick-loading, easy-clean unit that dispenses individual wipers one at a time to reduce waste while maintaining hygiene, especially in busy food areas.

### Bullet Point

- AIRFLEX\* highly absorbent'  
Competitive cost in use

### Product Specifications

<b>Roll Type</b>	Centre feed Roll	<b>Plies</b>	1
<b>Perforated</b>	Yes	<b>Bar Code (Case)</b>	05027375027086
<b>Bar Code (Pack)</b>	5033848013005	<b>Recycled Fibre(%)</b>	50
<b>Virgin Fibre(%)</b>	50	<b>Bleaching Method</b>	Elemental Chlorine Free
<b>Embossing/textured</b>	Yes	<b>Technology</b>	Uncreped Through Air Dried (UCTAD)
<b>Detaching Strength(N/m/ply)</b>	0	<b>Colour</b>	White

## International Standards and Symbols

### Solution



#### Safer Workplace

We know staff safety is your top priority. You can rely on our solutions to protect them, their environment and your important work.



#### Productive Workplace

The success of your business hinges on your work efficiency. That's why our solutions are designed to help improve your productivity.

### Standard R+E

Food Contact Regulations

BFR 36th Recommendation -DE  
CH,Food Contact Law-  
DE,NL,IT,FR,Lebensmittel- und  
Futtermittelgesetzbuch - LFGB

### Trade

FSC F1 Mixed F2 Recycled F3 Pure

Forest Stewardship Council -  
Products carrying the Forest  
Stewardship Council (FSC) label are  
independently certified, giving  
assurance they come from forests  
that are managed to meet the social,  
economic and ecological needs of  
present and future generations. This  
product is FSC Certified - giving you  
the assurance that it is made from or  
contains wood that comes from FSC  
certified forests.

ISO 9001

This gives the requirements for  
quality management systems, is now  
firmly established as the globally  
implemented standard for providing  
assurance about the ability to satisfy  
quality requirements and to enhance  
customer satisfaction in supplier-  
customer relationships.

ISO 14001

ISO 14001 is an international  
environmental standard. Designed to  
help organisations ensure that  
operations comply with environmental  
laws, and; major environmental risks  
and liabilities are properly identified,  
minimised and managed.

### Packaging

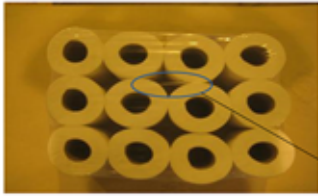
<b>Unit Of Sale</b>	Case	<b>Net Weight(kg)</b>	5.7
<b>Max Weight(kg)</b>	6.56	<b>Case Dimension (LXWXH)(cm)</b>	60 x 40 x 18.5
<b>Inner Pack Material</b>	Plastic		

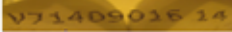
Pallet Type	LxWxH (m)	Cases per Layer	Layers per Pallet	Cases per Pallet
A2	1.20 x 1.00 x 1.26	5	6	30

### Related Products

Product Code	Description	Recommendation
	Fits Dispenser	
7017	AQUARIUS* Wiper Dispenser - Centrefeed Roll / White	✓

## Batch Code



Roll 2 



## Information

It is the employer's responsibility to assess the risk of the task to be undertaken and determine the correct choice of wipers for the task. The manufacturer, Kimberly-Clark, does not accept any responsibility for the incorrect choice or misuse of wipers shown in this brochure. All care has been taken to ensure that the information contained herein is as accurate as possible at the time of publication, however errors may occur and legislation concerning personal protective equipment is under constant review and may change in the lifetime of this brochure. Accordingly, the specifications for the products may be subject to change. We would advise you to contact INFOFAX if you have any queries concerning the products shown or the suitability of such products for the particular task. Always dispose of used protective equipment in a safe and appropriate manner in accordance with European, National and Local environmental regulations

**Infobox Details**

infofax@kcc.com

**Websites**

www.kcprofessional.co.uk

**Customer Service Number**

For more information please contact Customer Service during regular office hours-0870 551 044

**Country of Origin**

FRANCE