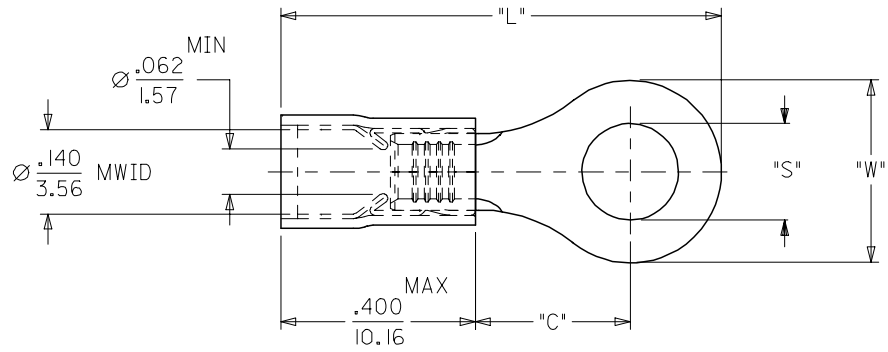
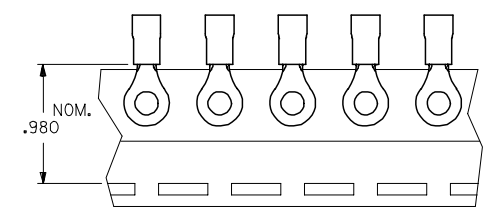


| MATERIAL NUMBER | ALTERNATE NUMBER | STUD SIZE | "S" | "W" | Ⓢ "C" MIN | Ⓢ "L" MAX | PACKAGING |
|-----------------|------------------|-----------|-------------|----------|-----------|-----------|-----------------|
| 190730005 | AA-820-02 | 2 | .094/(2.38) | .23(5.7) | .16(4.0) | .71(18.0) | LOOSE PIECE |
| 190730007 | AA-820-04 | 4 | .119/(3.02) | .23(5.7) | .16(4.0) | .71(18.0) | |
| 190730009 | AA-820-06 | 6 | .146/(3.71) | .23(5.7) | .16(4.0) | .71(18.0) | |
| 190730011 | AA-821-06 | 6 | .146/(3.71) | .31(7.9) | .27(6.9) | .87(22.0) | |
| 190730013 | AA-821-08 | 8 | .173/(4.39) | .31(7.9) | .27(6.9) | .87(22.0) | |
| 190730017 | AA-821-10 | 10 | .198/(5.03) | .31(7.9) | .27(6.9) | .87(22.0) | TAPE MOUNTED |
| 190730020 | AA-821-209 | 5MM | .209/(5.30) | .31(7.9) | .27(6.9) | .87(22.0) | |
| 190730006 | AA-820-02T | 2 | .094/(2.38) | .23(5.7) | .16(4.0) | .71(18.0) | |
| 190730008 | AA-820-04T | 4 | .119/(3.02) | .23(5.7) | .16(4.0) | .71(18.0) | |
| 190730010 | AA-820-06T | 6 | .146/(3.71) | .23(5.7) | .16(4.0) | .71(18.0) | |
| 190730012 | AA-821-06T | 6 | .146/(3.71) | .31(7.9) | .27(6.9) | .87(22.0) | |
| 190730015 | AA-821-08T | 8 | .173/(4.39) | .31(7.9) | .27(6.9) | .87(22.0) | |
| 190730019 | AA-821-10T | 10 | .198/(5.03) | .31(7.9) | .27(6.9) | .87(22.0) | |
| 190730021 | AA-821-209T | 5MM | .209/(5.30) | .31(7.9) | .27(6.9) | .87(22.0) | |



- NOTES:
 1. MATERIAL: COPPER
 PLATING: ELECTROPLATE TIN
 2. FERRULE: TIN-PLATED BRASS
 3. INSULATION: RED NYLON 94V2.
 4. MWID=MAXIMUM WIRE INSULATION DIA.
 5. ALL DIMENSIONS IN INCHES/(MM).
 6. ASSEMBLY IS ROHS COMPLIANT.

| REV | DESCRIPTION |
|-----|---------------------------|
| 1 | REV CHART DIM. C & L |
| 2 | EC NO: ETC2007-0223 |
| 3 | DRW:HEHLE 2006/12/04 |
| 4 | CHKD: JMACNEIL 2006/12/04 |
| 5 | APPR: JMACNEIL 2006/12/06 |

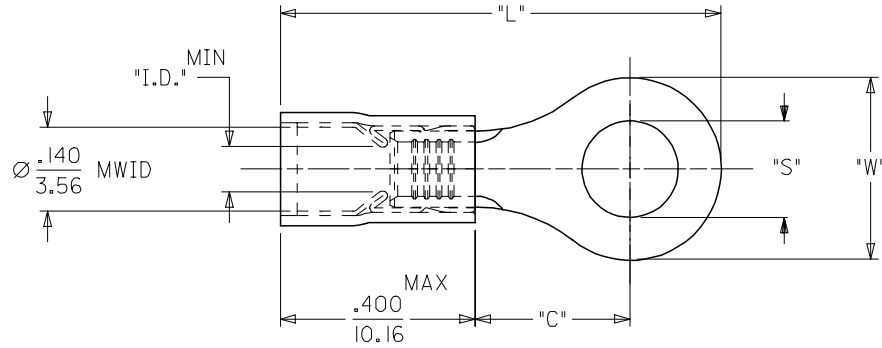
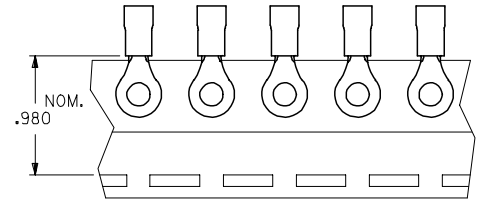
| QUALITY SYMBOLS |
|-----------------|
| ◀=0 |
| ▽=0 |

| GENERAL TOLERANCES (UNLESS SPECIFIED) | |
|---------------------------------------|--------|
| | INCH |
| 4 PLACES | ± .005 |
| 3 PLACES | ± .005 |
| 2 PLACES | ± .01 |
| 1 PLACE | ± .025 |
| ANGULAR ±1/2° | |

| DIMENSION STYLE | |
|-----------------|------------|
| IN/MM | |
| DRAWN BY | DATE |
| HEB | 2000/09/08 |
| CHECKED BY | DATE |
| RWD | 2000/09/08 |
| APPROVED BY | DATE |
| RWD | 2000/09/08 |

| SCALE | DESIGN UNITS | THIRD ANGLE PROJECTION |
|--|--------------|------------------------|
| 4:1 | INCH | ☑ |
| TITLE | | |
| RING TONGUE TERMINAL AVIKRIMP 800 SERIES | | |
| MATERIAL NO. DATE | | |
| SEE CHART 2000/09/08 | | |
| DOCUMENT NO. | | SHEET NO. |
| SD-19073-002 | | 1 OF 1 |
| SIZE B THIS DRAWING CONTAINS INFORMATION THAT IS PROPRIETARY TO MOLEX INCORPORATED AND SHOULD NOT BE USED WITHOUT WRITTEN PERMISSION | | |

| MATERIAL NUMBER | ALTERNATE NUMBER | STUD SIZE | "S" | "W" | "C" | Ⓢ "L" | "I.D." | PACKAGING |
|-----------------|------------------|-----------|------------|----------|----------|-----------|------------|----------------|
| 190730036 | AA-832-04 | 04 | .119(3.02) | .25(6.5) | .24(6.1) | .78(19.8) | .062(1.57) | LOOSE PIECE |
| 190730038 | AA-832-06 | 06 | .146(3.71) | .25(6.5) | .24(6.1) | .78(19.8) | .062(1.57) | |
| 190730042 | AA-832-08 | 08 | .173(4.39) | .25(6.5) | .24(6.1) | .78(19.8) | .062(1.57) | |
| 190730046 | AA-833-04 | 04 | .119(3.02) | .27(6.9) | .24(6.1) | .82(20.7) | .062(1.57) | |
| 190730047 | AA-833-06 | 06 | .146(3.71) | .27(6.9) | .24(6.1) | .82(20.7) | .062(1.57) | |
| 190730048 | AA-833-08 | 08 | .173(4.39) | .27(6.9) | .24(6.1) | .82(20.7) | .062(1.57) | |
| 190730049 | AA-833-10 | 10 | .198(5.03) | .27(6.9) | .24(6.1) | .82(20.7) | .062(1.57) | |
| 190730001 | AA-8111-02 | 02 | .094(2.38) | .19(4.8) | .17(4.4) | .72(18.2) | .054(1.37) | |
| 190730003 | AA-8111-04 | 04 | .119(3.02) | .19(4.8) | .17(4.4) | .72(18.2) | .054(1.37) | |
| 190730037 | AA-832-04T | 04 | .119(3.02) | .25(6.5) | .24(6.1) | .78(19.8) | .062(1.57) | |
| 190730040 | AA-832-06T | 06 | .146(3.71) | .25(6.5) | .24(6.1) | .78(19.8) | .062(1.57) | |
| 190730043 | AA-832-08T | 08 | .173(4.39) | .25(6.5) | .24(6.1) | .78(19.8) | .062(1.57) | |
| 190730050 | AA-833-10T | 10 | .198(5.03) | .27(6.9) | .24(6.1) | .82(20.7) | .062(1.57) | |
| 190730002 | AA-8111-02T | 02 | .094(2.38) | .19(4.8) | .17(4.4) | .72(18.2) | .054(1.37) | |
| 190730004 | AA-8111-04T | 04 | .119(3.02) | .19(4.8) | .17(4.4) | .72(18.2) | .054(1.37) | |

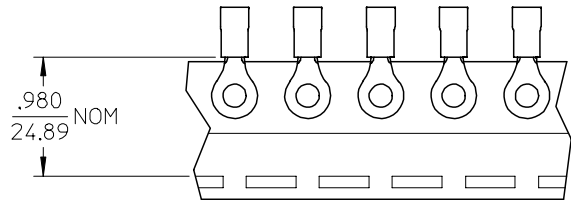
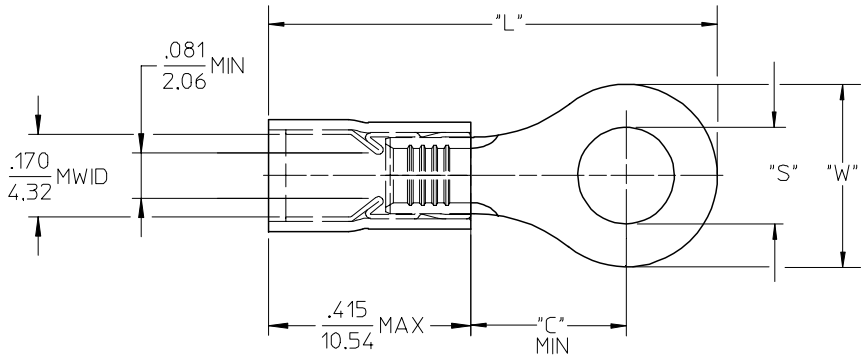


- NOTES:
 1. MATERIAL: COPPER
 PLATING: ELECTROPLATE TIN
 2. FERRULE: TIN-PLATED BRASS
 3. INSULATION: RED NYLON
 4. MWID=MAXIMUM WIRE INSULATION DIA.
 5. ALL DIMENSIONS IN INCHES (MM).

| | | | | | | | | | | |
|---|-------------------------------|---|-----------------------|--------------------------|----------------------|------------------------|----------------------|------------------------|--|---------------------|
| CHANGED DIMENSIONS EC NO: ETC2007-0178 DRWN: JLOMASTRO 2006/10/24 CHKD: JMACNEIL 2006/10/24 APPR: JMACNEIL 2006/10/26 | QUALITY SYMBOLS ▽=0 ▽=0 | GENERAL TOLERANCES (UNLESS SPECIFIED) | | DIMENSION STYLE IN/MM | | SCALE --- | DESIGN UNITS INCH | THIRD ANGLE PROJECTION | | |
| | | 4 PLACES ± --- ± --- | 3 PLACES ± --- ± .005 | 2 PLACES ± 0.13 ± .01 | 1 PLACE ± 0.25 ± --- | ANGULAR ±1/2° | DRAWN BY ASAYDEH | DATE 05/12/07 | TITLE RING TONGUE TERMINAL 22-18 AWG AVIKRIMP, 800-SERIES | |
| | | DRAFT WHERE APPLICABLE MUST REMAIN WITHIN DIMENSIONS | | SEE CHART | | APPROVED BY RDEROSS | | DATE 05/12/07 | MATERIAL NO. SD-19073-004 | SHEET NO. 1 OF 1 |
| | | THIS DRAWING CONTAINS INFORMATION THAT IS PROPRIETARY TO MOLEX INCORPORATED AND SHOULD NOT BE USED WITHOUT WRITTEN PERMISSION | | | | | | | | |

19073

| MATERIAL NUMBER | ENG. NO. | MATERIAL NUMBER TAPE MOUNTED | ENG. NO. | STUD SIZE | "S" ±.005 | "W" MAX | "C" MIN | "L" MAX |
|-----------------|-----------|------------------------------|------------|-----------|-------------|--------------|--------------|---------------|
| 190730301 | BB-818-14 | 190730058 | BB-818-14T | 14 | .265 (6.73) | .544 (13.82) | .554 (14.07) | 1.225 (31.12) |
| 190730059 | BB-818-38 | 190730060 | BB-818-38T | 38 | .390 (9.91) | | | |
| 190730061 | BB-818-56 | 190730062 | BB-818-56T | 56 | .328 (8.33) | | | |
| 190730065 | BB-823-04 | 190730066 | BB-823-04T | 04 | .119 (3.02) | .270 (6.86) | .209 (5.31) | .770 (20.32) |
| 190730067 | BB-823-06 | 190730070 | BB-823-06T | 06 | .146 (3.71) | | | |
| 190730072 | BB-823-08 | 190730073 | BB-823-08T | 08 | .173 (4.39) | | | |
| 190730074 | BB-825-10 | 190730075 | BB-825-10T | 10 | .198 (5.03) | .477 (12.12) | .388 (9.86) | 1.077 (27.36) |
| 190730076 | BB-825-14 | 190730077 | BB-825-14T | 14 | .265 (6.73) | | | |
| 190730079 | BB-825-56 | 190730080 | BB-825-56T | 56 | .328 (8.33) | | | |



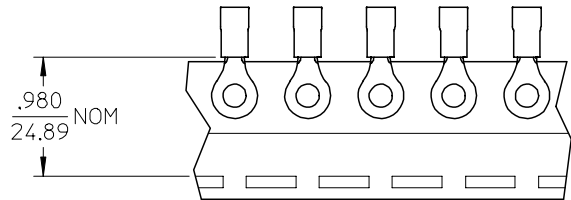
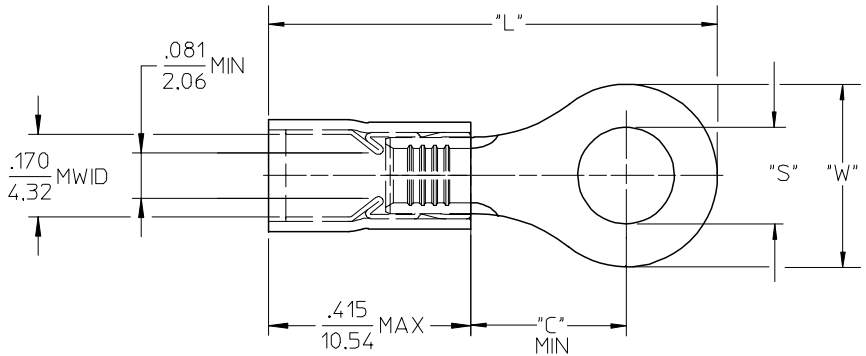
SALES DRAWING

- NOTES:
1. MATERIAL: COPPER (.031/0.79) THICK PLATING: ELECTROPLATE TIN
 2. FERRULE: TIN-PLATED BRASS
 3. INSULATION: BLUE NYLON
 4. MWID=MAXIMUM WIRE INSULATION DIA.
 5. ALL DIMENSIONS IN INCHES (MM).
 6. WIRE SIZE: 16-14 AWG
1.0-2.5 MM²

| | | | | | | | | |
|---|-------------------------------|---------------------------------------|---|--|---------------------|---|------------------------|---------------------------|
| EC NO: ETC2004-0167 DRWN:DMYRICK 2004/03/31 CHKD:HBEITZEL 2004/04/01 APPR:RDEROSS 2004/04/01 | QUALITY SYMBOLS | GENERAL TOLERANCES (UNLESS SPECIFIED) | | SCALE 4:1 | DESIGN UNITS INCH | THIRD ANGLE PROJECTION | REVISE ON CAD ONLY | |
| | DESCRIPTION ▼ = 0 ▽ = 0 | mm | INCH | DIMENSION STYLE IN/MM | | TITLE RING TONGUE TERMINAL AVIKRIMP, 800-SERIES 16-14 AWG | | |
| | | 4 PLACES | ± --- | ± --- | DRAWN BY DMYRICK | DATE 03/12/15 | MOLEX INCORPORATED | |
| | | 3 PLACES | ± --- | ± .005 | CHECKED BY HBEITZEL | DATE 03/12/15 | MATERIAL NO. SEE CHART | DOCUMENT NO. SD-19073-005 |
| | 2 PLACES | ± 0.13 | ± .01 | APPROVED BY RDEROSS | DATE 03/12/15 | SHEET NO. 1 OF 1 | | |
| | 1 PLACE | ± 0.25 | ± --- | DRAFT WHERE APPLICABLE MUST REMAIN WITHIN DIMENSIONS | | | | |
| | ANGULAR ± 1 ° | | THIS DRAWING CONTAINS INFORMATION THAT IS PROPRIETARY TO MOLEX INCORPORATED AND SHOULD NOT BE USED WITHOUT WRITTEN PERMISSION | | | | | |

19073

| MATERIAL NUMBER | ENG. NO. | MATERIAL NUMBER TAPE MOUNTED | ENG. NO. | STUD SIZE | "S" ±.005 | "W" MAX | "C" MIN | "L" MAX |
|-----------------|-----------|------------------------------|------------|-----------|-------------|-------------|-------------|--------------|
| 190730081 | BB-837-04 | ----- | ----- | 04 | .119 (3.02) | .322 (8.18) | .285 (7.24) | .885 (22.48) |
| 190730083 | BB-837-06 | 190730084 | BB-837-06T | 06 | .146 (3.71) | | | |
| 190730085 | BB-837-08 | 190730086 | BB-837-08T | 08 | .173 (4.39) | | | |
| 190730087 | BB-837-10 | 190730088 | BB-823-10T | 10 | .198 (5.03) | | | |
| 190730302 | BB-839-06 | 190730093 | BB-839-06T | 06 | .146 (3.71) | .352 (8.94) | .310 (7.87) | .936 (23.77) |
| 190730094 | BB-839-08 | 190730096 | BB-839-08T | 08 | .173 (4.39) | | | |
| 190730097 | BB-839-10 | 190730099 | BB-839-10T | 10 | .198 (5.03) | | | |

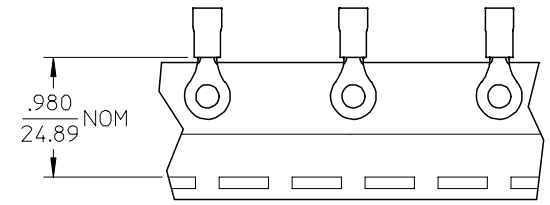
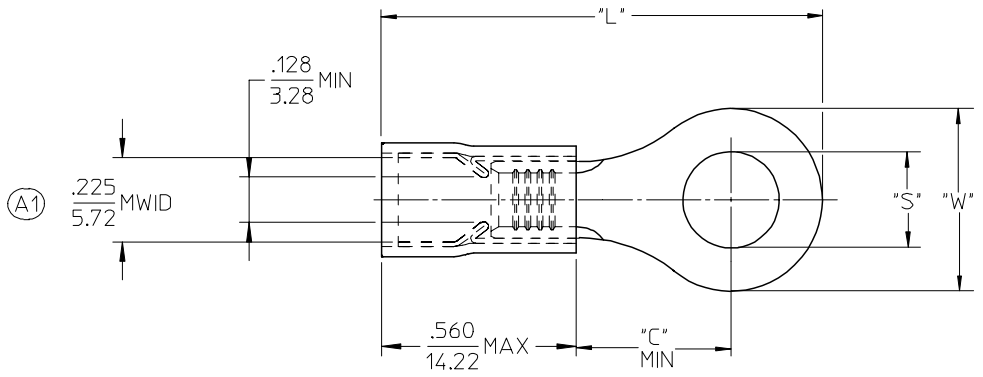


SALES DRAWING

- NOTES:
1. MATERIAL: COPPER (.031/0.79) THICK
PLATING: ELECTROPLATE TIN
 2. FERRULE: TIN-PLATED BRASS
 3. INSULATION: BLUE NYLON
 4. MWID=MAXIMUM WIRE INSULATION DIA.
 5. ALL DIMENSIONS IN INCHES (MM).
 6. WIRE SIZE: 16-14 AWG
1.0-2.5 MM²

| | | | | | | | | |
|---|-------------------------------|---------------------------------------|-------|---|-----------------------|------------------------|---|--|
| EC NO: ETC2004-0123 DRWN:DMYRICK 2004/01/05 CHKD:SBEITZEL 2004/01/05 APPR:RDEROSS 2004/01/06 | QUALITY SYMBOLS | GENERAL TOLERANCES (UNLESS SPECIFIED) | | SCALE 4:1 | DESIGN UNITS INCH | THIRD ANGLE PROJECTION | REVISE ON CAD ONLY | |
| | DESCRIPTION ▼ = 0 ▽ = 0 | | mm | INCH | DIMENSION STYLE IN/MM | | TITLE | |
| | | 4 PLACES | ± --- | ± --- | DRAWN BY DMYRICK | DATE 03/12/15 | RING TONGUE TERMINAL AVIKRIMP, 800-SERIES 16-14 AWG | |
| | | 3 PLACES | ± --- | ± .005 | CHECKED BY SBEITZEL | DATE 03/12/15 | MOLEX INCORPORATED | |
| | 2 PLACES | ± 0.13 | ± .01 | APPROVED BY RDEROSS | DATE 03/12/15 | MATERIAL NO. SEE CHART | DOCUMENT NO. SD-19073-006 | |
| | 1 PLACE | ± 0.25 | ± --- | DRAFT WHERE APPLICABLE MUST REMAIN WITHIN DIMENSIONS | | SHEET NO. 1 OF 1 | | |
| | | ANGULAR ± 1 ° | | THIS DRAWING CONTAINS INFORMATION THAT IS PROPRIETARY TO MOLEX INCORPORATED AND SHOULD NOT BE USED WITHOUT WRITTEN PERMISSION | | | | |

| MATERIAL NUMBER | ENG. NO. | MATERIAL NUMBER TAPE MOUNTED | ENG. NO. | STUD SIZE | "S" ±.005 | "W" MAX | "C" MIN | "L" MAX |
|-----------------|----------|------------------------------|-----------|-----------|--------------|--------------|--------------|---------------|
| 190730145 | C-801-12 | 190730146 | C-801-12T | 12 | .515 (13.08) | .760 (19.30) | .611 (15.52) | 1.580 (40.13) |
| 190730148 | C-801-14 | ----- | ----- | 14 | .265 (6.73) | | | |
| 190730150 | C-801-38 | ----- | ----- | 38 | .390 (9.91) | | | |
| 190730152 | C-801-56 | ----- | ----- | 56 | .328 (8.33) | | | |
| 190730154 | C-801-76 | ----- | ----- | 76 | .453 (11.51) | | | |
| 190730156 | C-828-04 | 190730157 | C-828-04T | 04 | .119 (3.02) | .385 (9.78) | .303 (7.70) | 1.091 (27.71) |
| 190730160 | C-828-06 | 190730162 | C-828-06T | 06 | .146 (3.71) | | | |
| 190730165 | C-828-08 | 190730167 | C-828-08T | 08 | .173 (4.39) | | | |
| 190730170 | C-828-10 | 190730172 | C-828-10T | 10 | .198 (5.03) | | | |
| 190730175 | C-828-14 | ----- | ----- | 14 | .265 (6.73) | | | |



SALES DRAWING

- NOTES:
- MATERIAL: COPPER (.040/1.02) THICK. PLATING: ELECTROPLATE TIN
 - FERRULE: TIN PLATED BRASS
 - INSULATION: YELLOW NYLON
 - MWID=MAXIMUM WIRE INSULATION DIA.
 - ALL DIMENSIONS IN INCHES (MM).
 - WIRE SIZE: 12-10 AWG
4.0-6.0 MM²

| EC NO: ETC2006-0152 DRWN: ASAYDEH 2005/12/12 CHKD: JLOMASTR 2005/12/13 APPR: RDEROSS 2005/12/14 | QUALITY SYMBOLS | GENERAL TOLERANCES (UNLESS SPECIFIED) | SCALE 4:1 | DESIGN UNITS INCH | THIRD ANGLE PROJECTION | REVISE ON CAD ONLY | | | | | | | | | | | | | | | |
|--|---|--|---------------------|-------------------|------------------------|---------------------------|-------|-------|----------|-------|--------|----------|--------|-------|---------|--------|-------|--------------------------|-------|---|--|
| | DESCRIPTION ▼ - 0 ▽ - 0 | <table border="1"> <thead> <tr> <th></th> <th>mm</th> <th>INCH</th> </tr> </thead> <tbody> <tr> <td>4 PLACES</td> <td>± ---</td> <td>± ---</td> </tr> <tr> <td>3 PLACES</td> <td>± ---</td> <td>± .005</td> </tr> <tr> <td>2 PLACES</td> <td>± 0.13</td> <td>± .01</td> </tr> <tr> <td>1 PLACE</td> <td>± 0.25</td> <td>± ---</td> </tr> </tbody> </table> | | mm | INCH | 4 PLACES | ± --- | ± --- | 3 PLACES | ± --- | ± .005 | 2 PLACES | ± 0.13 | ± .01 | 1 PLACE | ± 0.25 | ± --- | DIMENSION STYLE IN/MM | TITLE | RING TONGUE TERMINAL AVIKRIMP, 800-SERIES 12-10 AWG | |
| | | | mm | INCH | | | | | | | | | | | | | | | | | |
| | | 4 PLACES | ± --- | ± --- | | | | | | | | | | | | | | | | | |
| 3 PLACES | ± --- | ± .005 | | | | | | | | | | | | | | | | | | | |
| 2 PLACES | ± 0.13 | ± .01 | | | | | | | | | | | | | | | | | | | |
| 1 PLACE | ± 0.25 | ± --- | | | | | | | | | | | | | | | | | | | |
| DRAFT WHERE APPLICABLE MUST REMAIN WITHIN DIMENSIONS | APPROVED BY RDEROSS | DATE 03/12/15 | CHECKED BY SBEITZEL | DATE 03/12/15 | MATERIAL NO. SEE CHART | DOCUMENT NO. SD-19073-007 | | | | | | | | | | | | | | | |
| REV A1 | THIS DRAWING CONTAINS INFORMATION THAT IS PROPRIETARY TO MOLEX INCORPORATED AND SHOULD NOT BE USED WITHOUT WRITTEN PERMISSION | | | | | SHEET NO. 1 OF 1 | | | | | | | | | | | | | | | |