

WHEEL P 125X30/40 PLAIN BORE SWIVEL FORK X20/40 +
BRAKE

Wheel series P

Monolithic polyamide 6 wheels available with standard shielded or stainless steel precision ball bearings; standard or stainless steel roller bearing; plain bore.
Plain bore wheel.

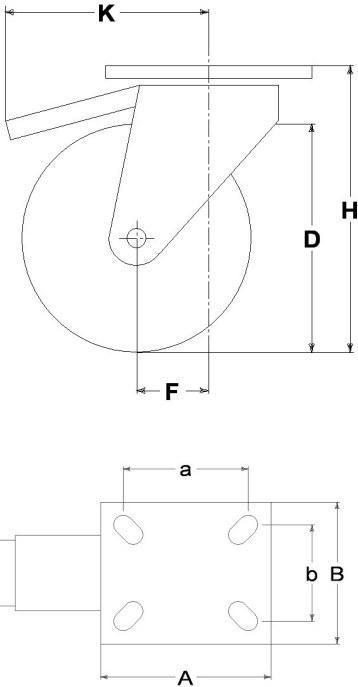
Castor series INOX20

Inox20 series, polished stainless steel forks, swivels with double ball races.
Trailing foot brake - total stop.



Technical data

| | | |
|----------------------------|-----|-----------|
| Wheel diameter | D | 125 mm |
| Tyre width | E | 30,0 mm |
| Bore diameter | d | 15 mm |
| Weight article | | 0,780 kg |
| Hub width | L | 40 mm |
| Overall height | H | 153 mm |
| Top plate outer dimensions | AxB | 102x83 mm |
| Bolt hole spacing | axb | 76x55 mm |
| Bolt hole spacing | axb | 80x60 mm |
| Fixing bolt diameter | g | M8 |
| Offset | F | 40 mm |
| Fork width | U | 40 mm |
| Load Capacity | | 150 kg |



Related Articles

Spare part wheel: [4093](#)
Basic version: [17131](#)

GENERAL INFORMATION / RECOMMENDATIONS AND WARNINGS

The cited text and the complete catalogue in their most up-dated versions are available in the OEM's website page www.lagspa.it/downloads. The dimensions, descriptions, specifications and illustrations herein are indicative and subject to variations without notice. The fact that products are illustrated herein does not necessarily imply they are available from stock nor does it place us under any obligation to supply them.
Tests carried out refer to the original products with original accessories: the replacement of one of the components with others of different manufacture might prevent the same results from being achieved and will automatically invalidate any guarantee. Please contact our technical service concerning any special application.