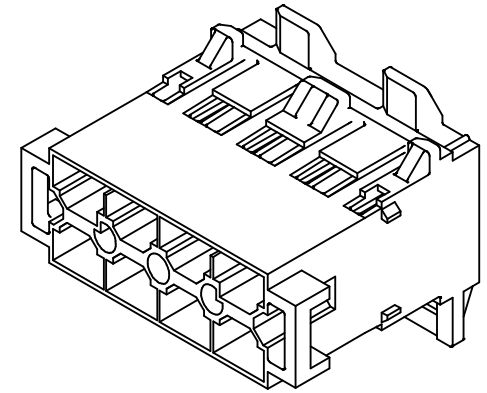
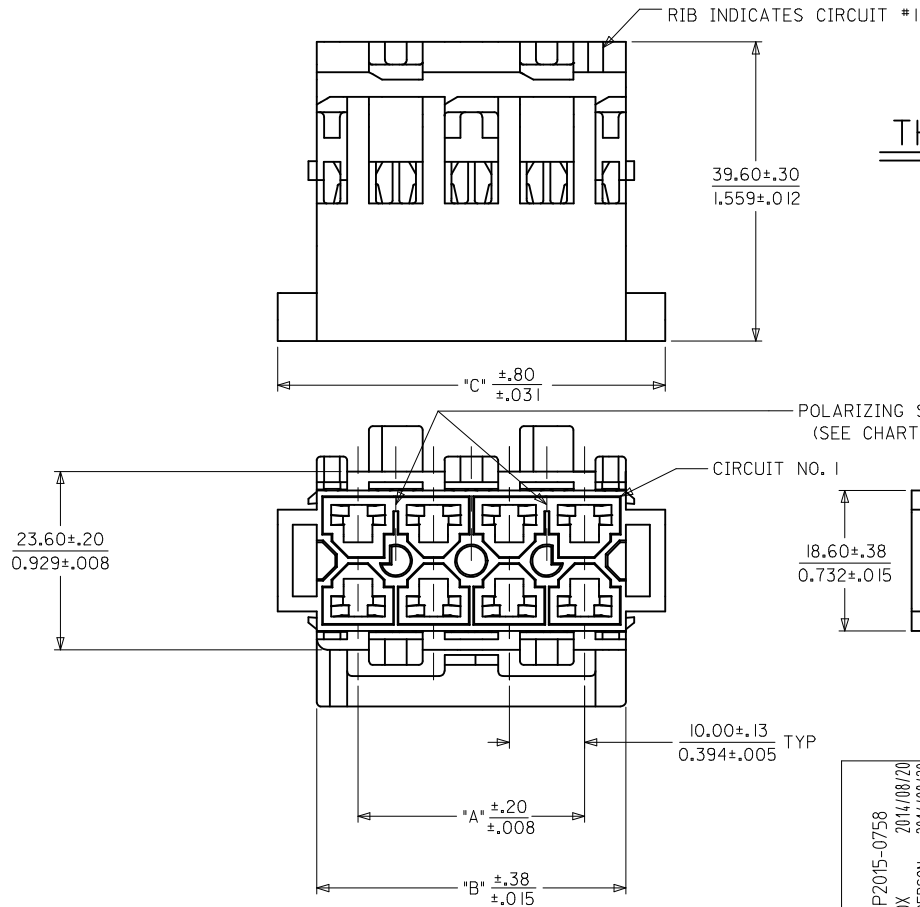


MATERIAL NUMBER	POSITION NUMBER	DIM. "A"	DIM. "B"	DIM. "C"	QUANTITY OF POLARIZING SLOTS	PANEL THICKNESS ACCOMMODATED
43938-2101	6	20.00 .787	30.90 1.216	41.30 1.626	1	1.80/2.00 .071/.079
43938-2102	8	30.00 1.181	40.90 1.610	51.30 2.020	2	
43938-2103	10	40.00 1.575	50.90 2.004	61.30 2.413	2	
43938-2104	12	50.00 1.968	60.90 2.398	71.30 2.807	2	
43938-2105	14	60.00 2.362	70.90 2.791	81.30 3.201	2	

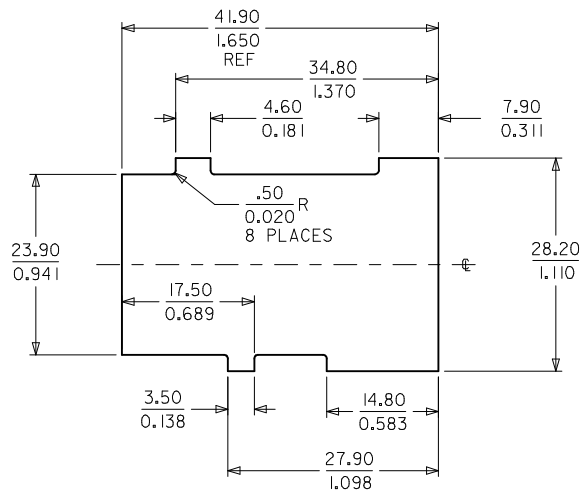
NOTES:

1. MATERIAL: UNFILLED POLYESTER, U.L. 94V-0, COLOR: BLACK
2. FINISH: NONE
3. PRODUCT SPECIFICATION: PS-42815-001
4. PARTS TO BE PACKAGED: 6-10 CKT PER PK-43938-001, 12-14 CKT PER PK-45286-002.
5. THIS PART IS DESIGNED TO USE MALE CRIMP TERMINAL #42817.
6. EACH WIRE MUST BE DRESSED SUCH THAT THE TERMINAL MAINTAINS ITS FREE FLOAT WITHIN THE HOUSING.
7. THIS PART IS DESIGNED TO USE T.P.A. #43980.
8. THIS PART IS DESIGNED TO MATE WITH RECEPTACLE HOUSING #43914.
9. SEE SHEET 2 FOR PANEL CUT-OUT DETAILS.
10. POLARIZING SLOTS TO BE LOCATED BETWEEN CIRCUITS ON EITHER END OF HOUSING OF THE CIRCUIT 1 ROW AS SHOWN.
EXCEPTION: THE 6 CIRCUIT HOUSING WILL HAVE A SINGLE SLOT ON THE CIRCUIT 1 END ONLY.

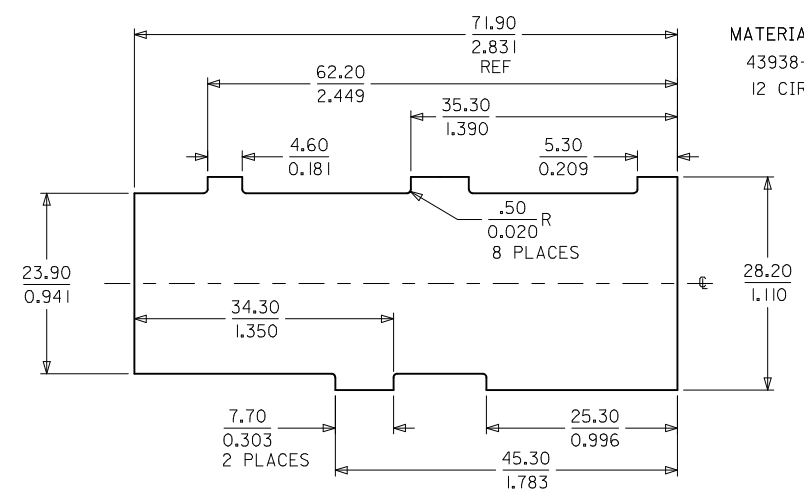
THIS PRODUCT MUST NOT BE USED WITHOUT THE T.P.A.



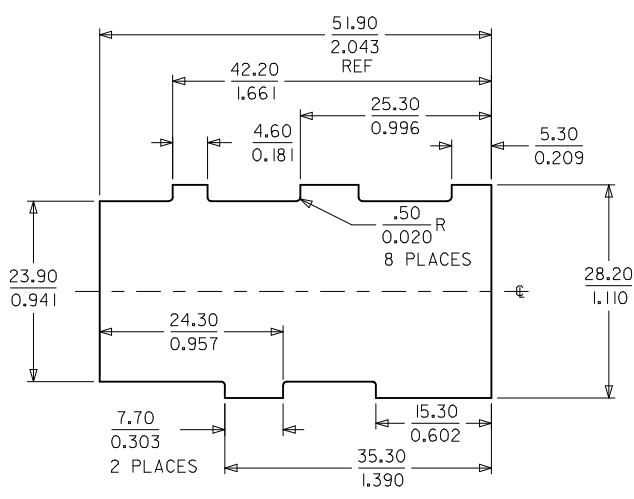
NOTE 4 EC NO: UCP2015-0758 DRWN: DFOX 2014/08/20 CHKD: BANDERSON 2014/08/20 APPR: FSMITH 2014/08/25	QUALITY SYMBOLS 	GENERAL TOLERANCES (UNLESS SPECIFIED) <table border="1"> <thead> <tr> <th></th> <th>mm</th> <th>INCH</th> </tr> </thead> <tbody> <tr> <td>4 PLACES</td> <td>±.005</td> <td>±.0005</td> </tr> <tr> <td>3 PLACES</td> <td>±.004</td> <td>±.0004</td> </tr> <tr> <td>2 PLACES</td> <td>±.003</td> <td>±.0003</td> </tr> <tr> <td>1 PLACE</td> <td>±.002</td> <td>±.0002</td> </tr> <tr> <td>0 PLACE</td> <td>±.001</td> <td>±.0001</td> </tr> </tbody> </table>		mm	INCH	4 PLACES	±.005	±.0005	3 PLACES	±.004	±.0004	2 PLACES	±.003	±.0003	1 PLACE	±.002	±.0002	0 PLACE	±.001	±.0001	DIMENSION STYLE MM/IN DRAWN BY: POLGAR DATE: 1998/08/21 CHECKED BY: COMERC I DATE: 1998/10/02 APPROVED BY: COMERC I DATE: 1998/10/02	SCALE: 2:1 DESIGN UNITS: METRIC THIRD ANGLE PROJECTION	TITLE: DUAL ROW PANEL MT, PLUG 6-14 CKT., BOTTOM LATCH, MINI-FIT SR. SERIES molex
		mm	INCH																				
	4 PLACES	±.005	±.0005																				
	3 PLACES	±.004	±.0004																				
2 PLACES	±.003	±.0003																					
1 PLACE	±.002	±.0002																					
0 PLACE	±.001	±.0001																					
MATERIAL NO. SEE CHART	DOCUMENT NO. SD-43938-002	SHEET NO. 1 OF 2																					
DRAFT WHERE APPLICABLE MUST REMAIN WITHIN DIMENSIONS	SIZE: C	THIS DRAWING CONTAINS INFORMATION THAT IS PROPRIETARY TO MOLEX INCORPORATED AND SHOULD NOT BE USED WITHOUT WRITTEN PERMISSION																					
REV: F1	DESCRIPTION:																						



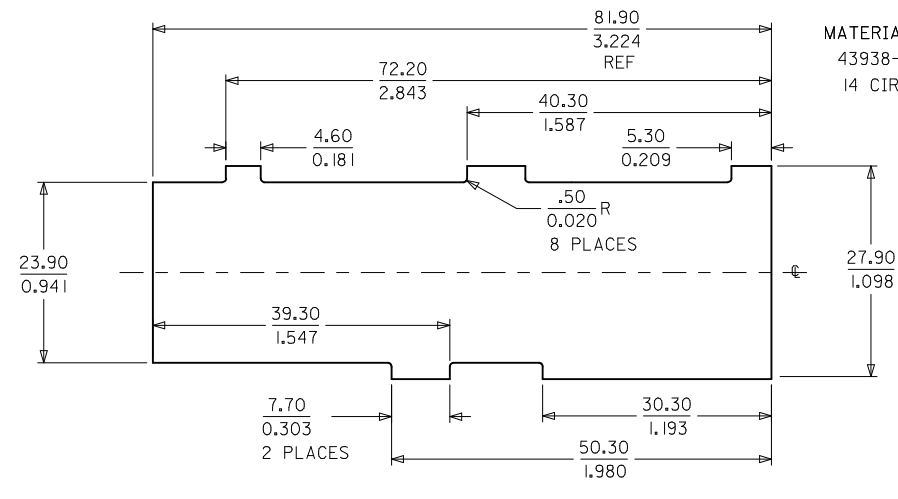
MATERIAL NO.:
43938-2101
6 CIRCUIT



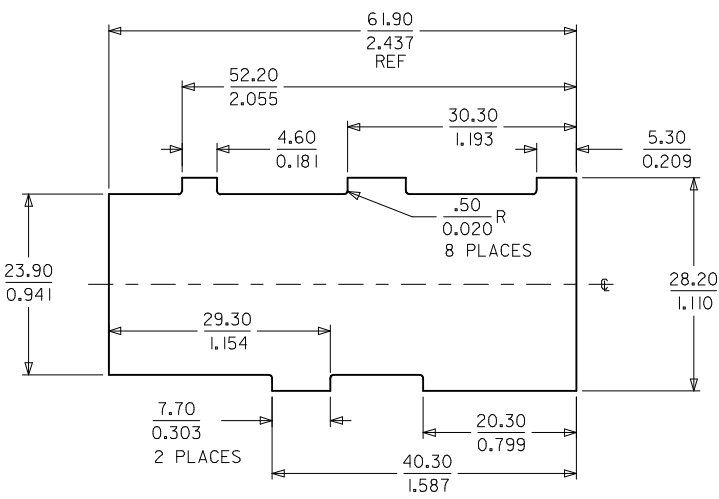
MATERIAL NO.:
43938-2104
12 CIRCUIT



MATERIAL NO.:
43938-1102
43938-2102
8 CIRCUIT



MATERIAL NO.:
43938-2105
14 CIRCUIT



MATERIAL NO.:
43938-2103
10 CIRCUIT

PANEL OPENINGS SHOWN FROM OUTSIDE OF BOX.
SEE CHART FOR PANEL THICKNESS.

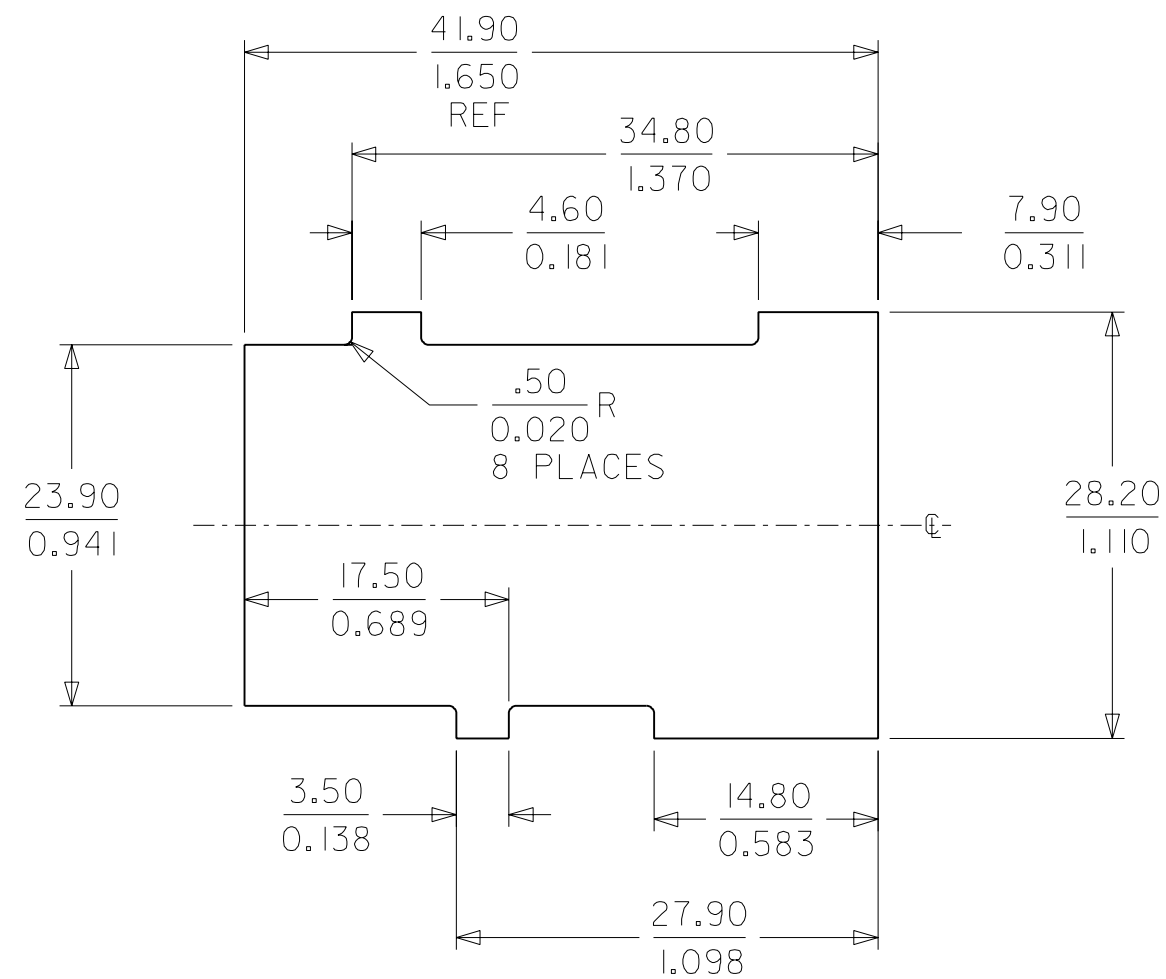
SEE SHEET 1	QUALITY SYMBOLS
EC NO: UCP2015-0758	▽=0
DRWN: DFOX 2014/08/20	▽=0
CHKD: BANDERSON 2014/08/20	▽=0
APPR: FSMITH 2014/08/25	
DESCRIPTION	
REV	

GENERAL TOLERANCES (UNLESS SPECIFIED)	
mm	INCH
4 PLACES ± .005	± .0002
3 PLACES ± .005	± .0002
2 PLACES ± .005	± .0002
1 PLACE ± .005	± .0002
0 PLACE ± .005	± .0002
ANGULAR ±1/2°	
DRAFT WHERE APPLICABLE MUST REMAIN WITHIN DIMENSIONS	

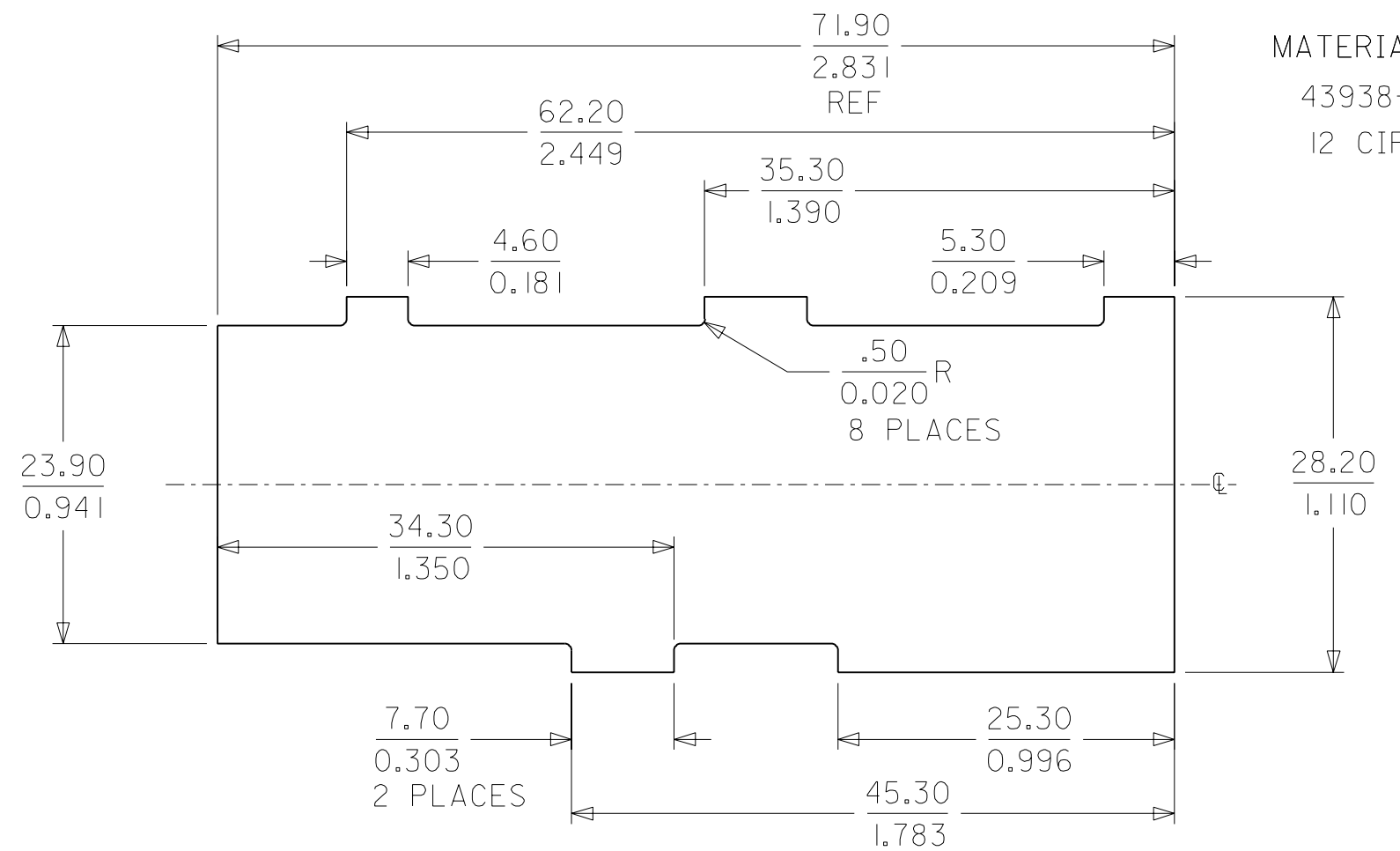
DIMENSION STYLE	
MM/IN	
DRAWN BY	DATE
POLGAR	1998/08/21
CHECKED BY	DATE
COMERC I	1998/10/02
APPROVED BY	DATE
COMERC I	1998/10/02
MATERIAL NO.	
SEE CHART	
SIZE	
C	

SCALE	DESIGN UNITS	THIRD ANGLE PROJECTION
2:1	METRIC	
TITLE		
DUAL ROW PANEL MT, PLUG 6-14 CKT., BOTTOM LATCH, MINI-FIT SR. SERIES		
molex		
DOCUMENT NO.	SHEET NO.	
SD-43938-002	2 OF 2	

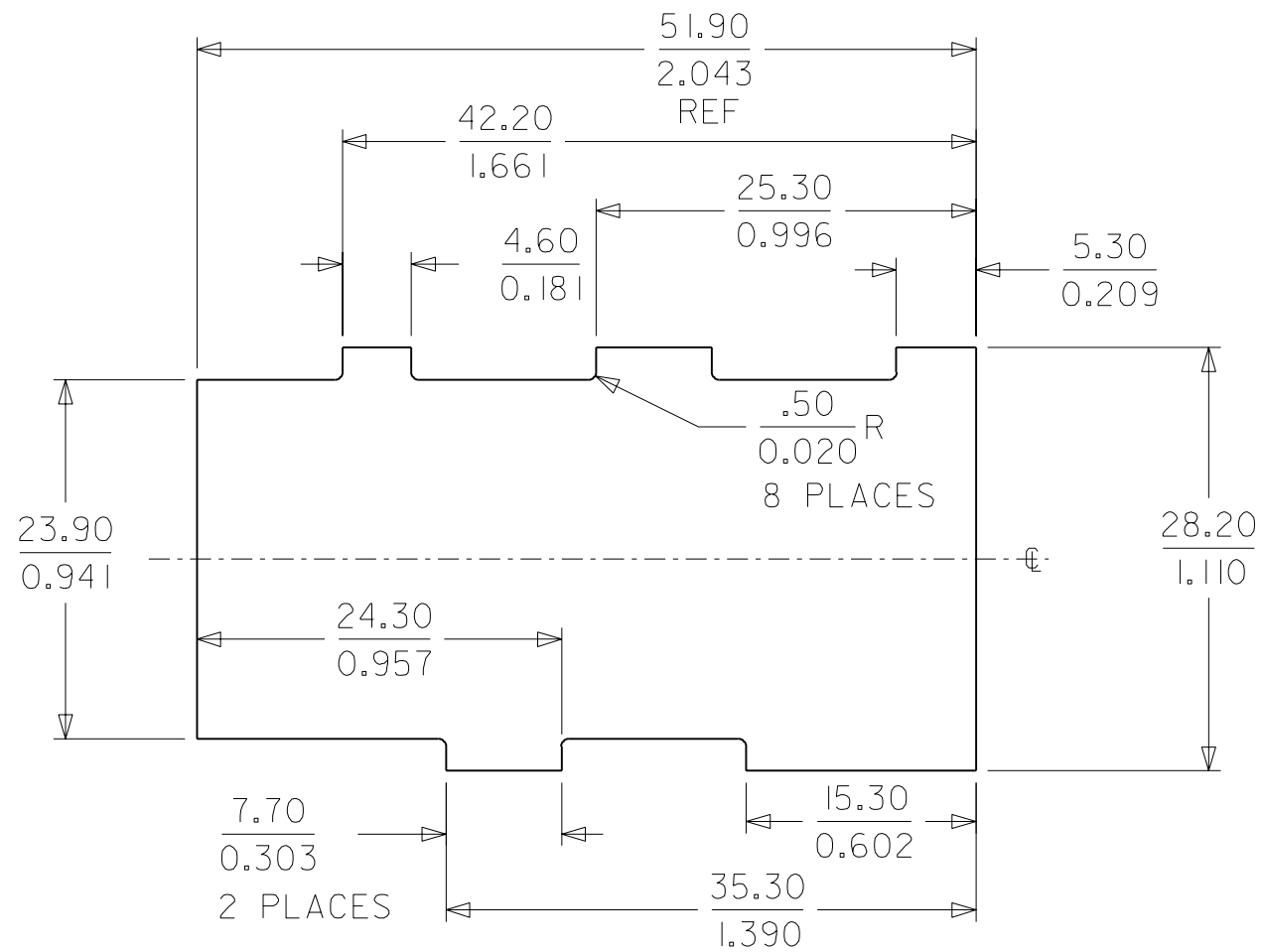
MATERIAL NO.:
43938-2101
6 CIRCUIT



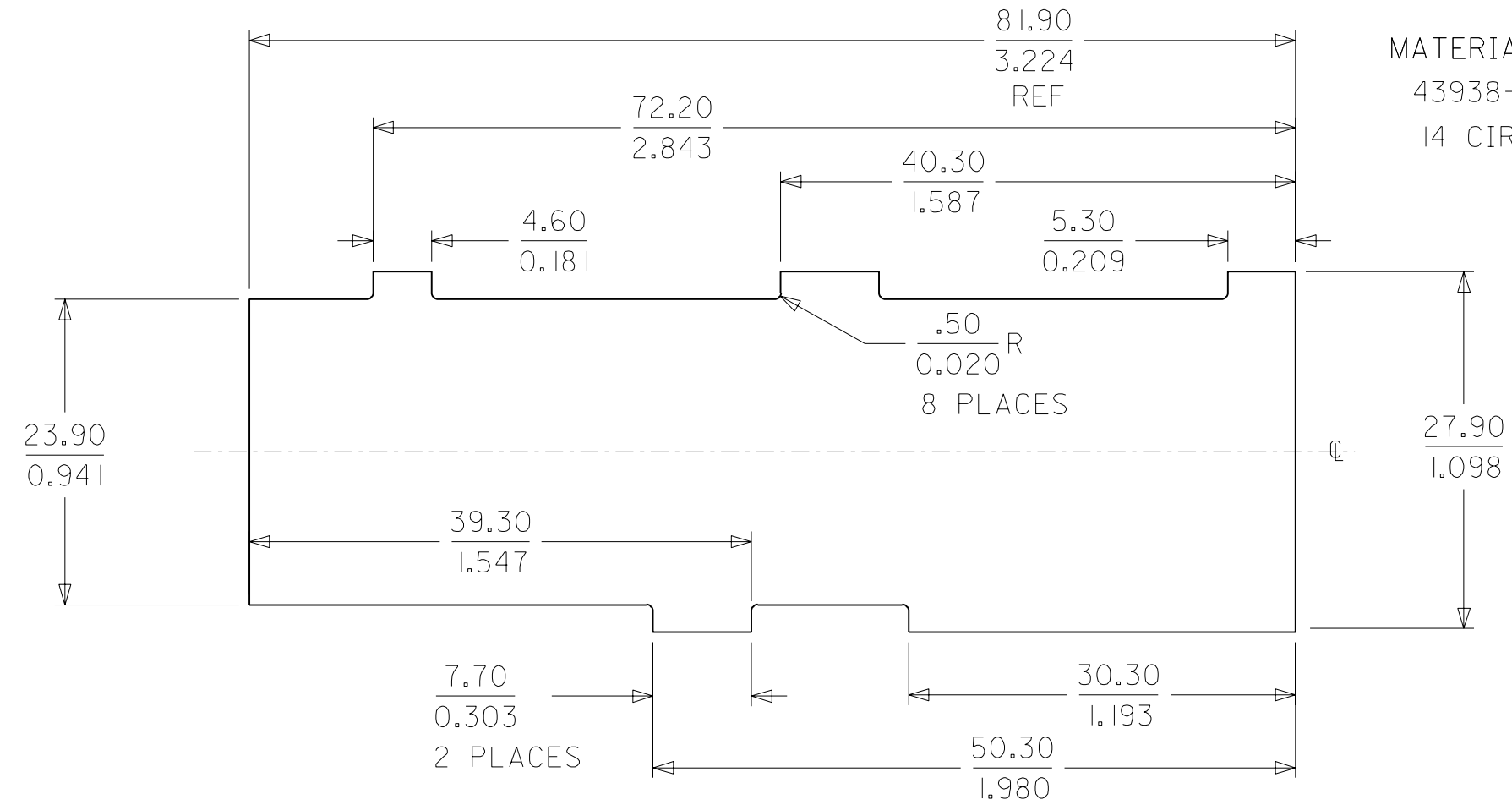
MATERIAL NO.:
43938-2104
12 CIRCUIT



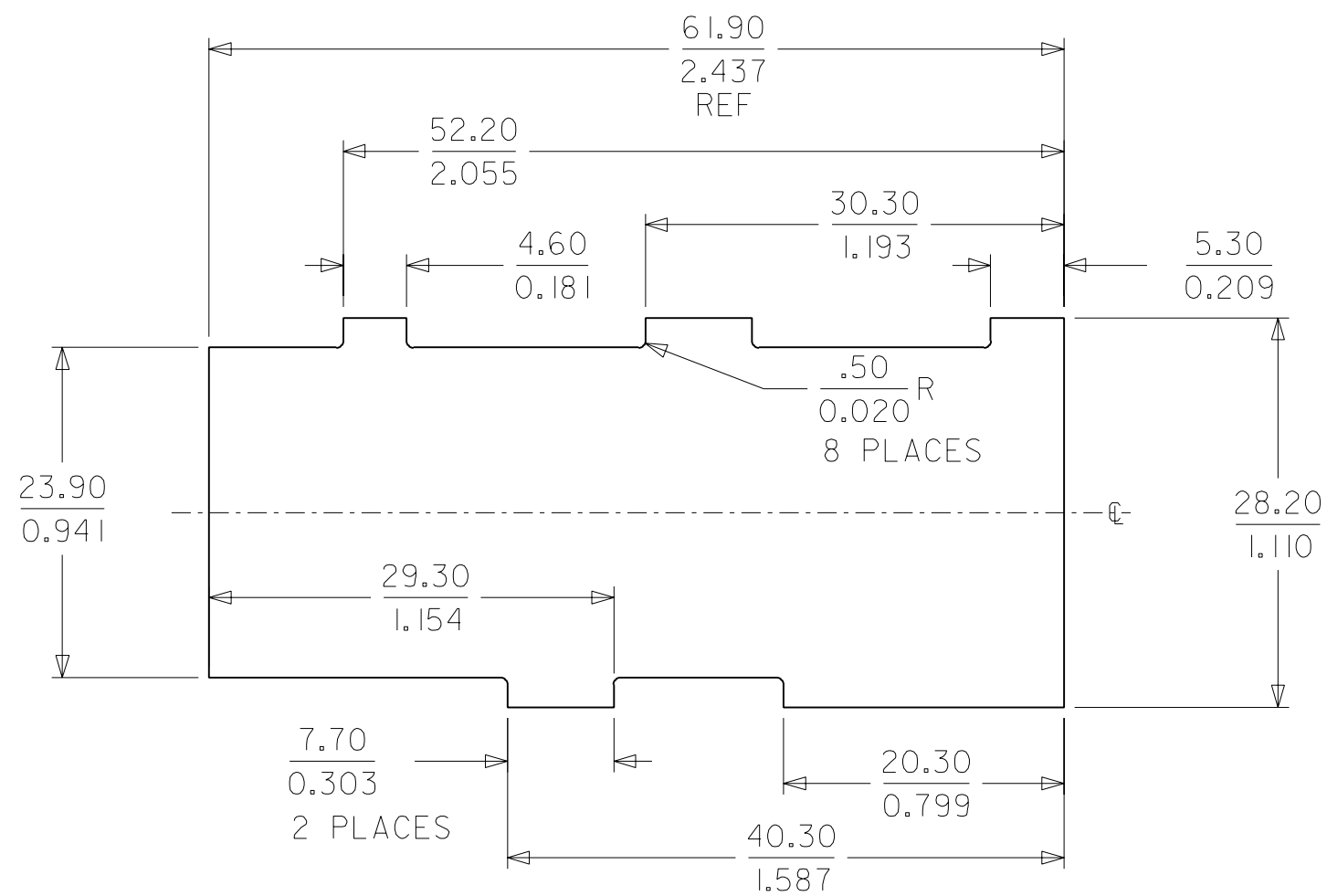
MATERIAL NO.:
43938-1102
43938-2102
8 CIRCUIT



MATERIAL NO.:
43938-2105
14 CIRCUIT



MATERIAL NO.:
43938-2103
10 CIRCUIT



PANEL OPENINGS SHOWN FROM OUTSIDE OF BOX.
SEE CHART FOR PANEL THICKNESS.

SEE SHEET 1 EC NO. UCP2004-0496 DRWN: COMERC I 03/09/12 CHK: COMERC I 03/09/12 APPR: COMERC I 03/09/12	QUALITY SYMBOLS	GENERAL TOLERANCES: (UNLESS SPECIFIED)		SCALE 2 : 1	DESIGN UNITS <input checked="" type="checkbox"/> mm <input type="checkbox"/> INCH	THIRD ANGLE PROJECTION	DIMENSIONS: <input checked="" type="checkbox"/> mm <input type="checkbox"/> INCH <input type="checkbox"/> mm ONLY	SHT	REV
	MAJOR = 0 CRITICAL = 0	4 PLACES	±0.---	±.---	DRAWN BY & DATE POLGAR 98/08/21	TITLE: DUAL ROW PANEL MT. PLUG, 6-14 CKT., BOTTOM LATCH, MINI-FIT SR. SERIES			
D2	DESCRIPTION	3 PLACES	±0.---	±.004	CHECKED BY & DATE COMERC I 98/10/02	MOLEX INCORPORATED			
	REV	2 PLACES	±0.10	±.---	APPROVED BY & DATE COMERC I 98/10/02	MATERIAL NO. DRAWING NO. SEE CHART SD-43938-002			SHEET NO. 2
		1 PLACE	±0.---	±.---	CAD FILENAME	THIS DRAWING CONTAINS INFORMATION THAT IS PROPRIETARY TO MOLEX INCORPORATED AND SHOULD NOT BE USED WITHOUT WRITTEN PERMISSION.			SIZE C