

# hp photosmart networking guide



---

## contents

Windows PC users: network your printer . . . . .	2
choose a network configuration . . . . .	2
connect a locally shared printer . . . . .	3
1. set up the printer. . . . .	3
2. install the printer software on the host computer . . . . .	3
3. install the printer software on each client . . . . .	5
connect the printer to a peer-to-peer network . . . . .	7
1. set up the printer. . . . .	7
2. set up the print server . . . . .	7
3. install the print server software and the printer software on each client. . . . .	7
connect the printer to a client server network . . . . .	10
1. set up the printer and print server . . . . .	10
2. install the printer software on the client server . . . . .	10
3. install the printer software on each client . . . . .	11
language codes and INF file paths . . . . .	11
Macintosh users: network your printer . . . . .	12
set up a Rendezvous printer connection in OS X version 10.2 or higher. . . . .	12
set up an AppleTalk printer connection in OS X . . . . .	13
set up an AppleTalk printer connection in OS 9.x . . . . .	13

---

# Windows PC users: network your printer

The Windows software that came with your printer allows you to set up the printer over a network. The following Windows operating systems are supported: 98, Me, 2000, and XP.

The HP Photosmart 7600, 7700, 7900 Series printers support the HP JetDirect 175X, 310X, and 380X external print servers. Go to [www.hp.com/go/jetdirect](http://www.hp.com/go/jetdirect) for a list of JetDirect print server models. Note that the printer driver installation for networked printers is complex and usually requires a network administrator.

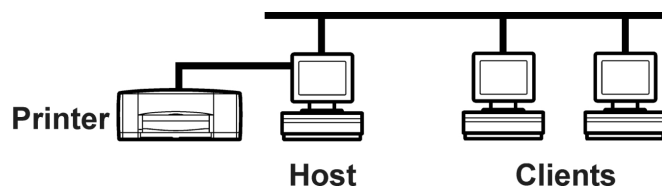
**Note:** Clients on a network do not have access to the CompactFlash, SmartMedia, Secure Digital, MultiMediaCard, or Memory Stick memory card slots. Clients only have the ability to print.

## choose a network configuration

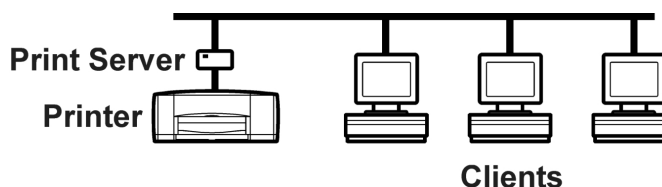
Before you set up your printer, check that your computer is fully set up and operational, and meets the minimum system requirements as listed in the HP Photosmart Printer Help.

Your HP Photosmart printer can be shared over a network in three different ways:

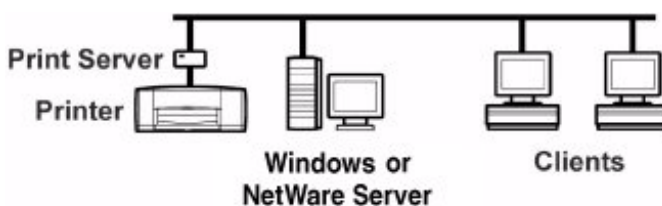
- **Locally Shared:** Share your printer from a network-connected computer by enabling printer sharing on a host computer and connecting your printer to the USB port of the host computer. See “connect a locally shared printer” on page 3.



- **Peer-to-Peer Network Connection:** Connect your printer to a network using the USB port of an HP JetDirect 175X, 310X, or 380X external print server. See “connect the printer to a peer-to-peer network” on page 7 and consult your print server documentation for help setting up the print server.



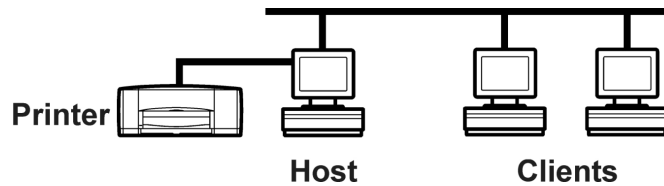
- **Client Server Network Connection:** Connect your printer to a network using the USB port of an HP JetDirect external print server and share the printer from a Windows 2000 or Netware 4.1, 5.0, or 6.0 server on your network. Clients print through a Windows or Netware server. See “connect the printer to a client server network” on page 10.



**Note:** The HP Jet Direct 175X external print server only supports a Windows 2000 server. The HP JetDirect 310X and 380X external print servers support both Windows 2000 and Netware servers.

## connect a locally shared printer

In the locally shared configuration, the printer is connected directly to the USB port of a selected computer that functions as a host to other computers on the network. To locally share your printer, the printer software that came with the printer must be installed on the host computer and on each client computer that accesses the printer.



In the locally shared configuration, the printer software supports Windows 98, Me, 2000, and XP operating systems.

To connect a locally shared printer follow these steps:

- 1 Set up the printer.
- 2 Install the printer software on the host computer, and then share your printer on the network.
- 3 Install the printer software on each of the client computers that need to access the printer.

### 1. set up the printer

- Set up the printer on the host. Follow the Setup Guide included with the printer.

**Note:** The software should not yet be installed at this point.

### 2. install the printer software on the host computer

#### install the printer software on a Windows 98, Me, 2000, or XP host

**Note:** You must have administrator privileges to install the printer software on a Windows 2000 or XP system.

- 1 Turn on the host computer and the printer.
- 2 Close or disable any virus protection programs or other software programs that are open and running on the computer, except the HP Photosmart Software Installer and Windows Explorer.
- 3 Using the Setup Guide included with the printer, install the software following the instructions for your operating system.

#### prepare your Windows 98 or Me computer to share your printer over the network

- 1 Turn on the host computer and the printer.
- 2 From the Windows **Start** menu, select **Settings**, then select **Control Panel**.
- 3 Double-click the **Network** control panel.
- 4 Click the **File and Print Sharing** button.
- 5 If it is not already checked, check **I want to be able to allow others to print to my printer(s)**.

- 6 Click **OK** to close the **File and Print Sharing** dialog box, then click **OK** to close the **Network** dialog box.
- 7 If prompted, restart Windows.

### **prepare your Windows 2000 or XP computer to share your printer over the network**

- 1 Turn on the host computer and the printer.
- 2 From the Windows **Start** menu, select **Settings**, then select **Printers** (for Windows 2000).  
  
OR  
  
From the Windows **Start** menu, select **Printers and Faxes** (for Windows XP).
- 3 Right-click the name of the printer you want to share and select **Properties**.
- 4 Select the **Security** tab to view a list of users or groups that have permission to access the shared printer.

You can:

- Add new users or groups to access the shared printer by clicking the **Add** button.
  - Select the permissions of each user or group by selecting the user or group, and then clicking the **Allow** or **Deny** check boxes next to each permission.
  - Select advanced permissions for sharing the printer by clicking the **Advanced** button.
- 5 When you have selected the users and groups that can access the shared printer and selected the permissions for each user or group, click **OK** to save the settings and close the Printer Properties dialog.

### **share your printer on the network**

- 1 From the Windows **Start** menu, select **Settings**, then select **Printers** (for Windows 2000).  
  
OR  
  
From the Windows **Start** menu, select **Printers and Faxes** (for Windows XP).
- 2 Right-click the HP Photosmart printer icon and choose **Sharing** from the pop-up menu.
- 3 Select **Shared As** and enter the name you want to use for your printer on the network. Use a name of eight characters or less. If you want to restrict access to your printer, enter a password in the Password field. Users will need to enter this password in order to print to your printer.

See your Windows documentation for more information about sharing your printer.

- 4 Click **OK**.
- 5 If a password was set, retype it and click **OK**.

### 3. install the printer software on each client

Make sure you have installed printer software on the host and set up the printer for sharing before you install the printer software on the client. Use the instructions for your computer's operating system—Windows 98 or Me, or Windows 2000 or XP.

#### install the printer software on a Windows 98 or Me client

- 1 From the Windows **Start** menu, select **Settings**, then select **Printers**.
- 2 Double-click **Add Printer**, then click **Next**.
- 3 Choose **Network Printer** as the printer connection, then click **Next**.
- 4 Click **Browse** to locate the print server and printer, click **OK**, then click **Next** (recommended).

OR

Enter the path or queue name of the printer. For example, type: `\\HostComputerName\PrinterName` or `\\ServerName\QueueName`, then click **Next**.

- 5 Click the **Have Disk** button, and insert the HP Photosmart printer software CD into your CD-ROM drive.

**Note:** If the printer software displays the following dialog box at any time, click **Cancel**.



**Note:** If your computer does not meet the minimum system requirements, the printer software displays a warning dialog box and the installation cannot continue. Click **Cancel** to close the dialog box.

- 6 In the **Install From Disk** dialog box, click **Browse**, then navigate to the `hphp9x12.inf` file.
  - Double-click your language folder. For example, if your language is English, double-click **enu**. See the language code chart on page 11 to find the code for your language.
  - Double-click your operating system folder. For example, if your computer's operating system is Windows 98, or Windows Me, double-click **win9x\_me**.
  - Click **hphp9x12.inf**.
- 7 Click **OK**, then click **OK** to close the **Install From Disk** dialog box.
- 8 Click **Next**.

- 9 Accept the default name for your printer (recommended) or enter a new name. To use this printer as your default printer, click **Yes**.

- 10 Click **Finish**.

### install the printer software on a Windows 2000 or XP client

**Note:** You must have administrator privileges to install the printer software on a Windows 2000 or XP system.

- 1 From the Windows **Start** menu, select **Settings**, then select **Printers** (for Windows 2000).

OR

From the Windows **Start** menu, select **Printers and Faxes** (for Windows XP).

- 2 Double-click **Add Printer**, then click **Next**.
- 3 Choose **Network Printer** as the printer connection, then click **Next**.
- 4 Click **Next** to browse for a printer (recommended).

OR

Select **Type the printer name** and enter the printer's name and path.

OR

Select **Connect to a printer on the Internet or on your intranet** and enter the printer's address.

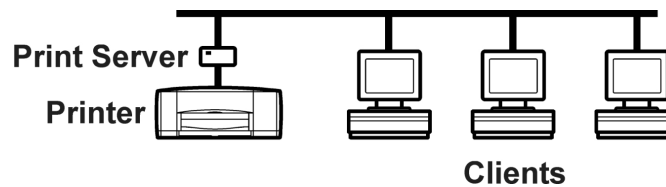
- 5 In the **Shared printers** box, double-click the host computer on which the printer is installed, select the printer, then click **Next**.

**Note:** If the host computer does not use Windows 2000 or XP, you will need to install the printer software from the printer software CD or from a shared network drive.

- 6 To use this printer as your default printer, click **Yes**, then click **Next**.
- 7 Click **Finish**.

## connect the printer to a peer-to-peer network

In a peer-to-peer direct network configuration, the printer is directly connected to the network via an HP JetDirect External Print Server. Each computer on the network sends print jobs directly to the HP JetDirect External Print Server.



The following client operating systems and print servers are supported:

Operating Systems	Print Servers
<ul style="list-style-type: none"><li>• Windows 98</li><li>• Windows Me</li><li>• Windows 2000</li><li>• Windows XP</li></ul>	<ul style="list-style-type: none"><li>• HP JetDirect 175X</li><li>• HP JetDirect 310X</li><li>• HP JetDirect 380X</li></ul>

To connect a printer to a peer-to-peer network follow these steps:

- 1 Set up the printer.
- 2 Set up the external print server for a peer-to-peer connection.
- 3 Install the print server software and the printer software on each of the client computers that need to access the printer.

### 1. set up the printer

- Set up the printer. Follow the Setup Guide included with the printer.

**Note:** The software should not yet be installed at this point.

### 2. set up the print server

- Set up the HP JetDirect external print server. Configure the HP JetDirect external print server according to the instructions provided with the print server.

### 3. install the print server software and the printer software on each client

- 1 Install the HP JetDirect port software version 3.05 or later on each client according to the instructions provided with the print server. To download version 3.05 or later of the HP JetDirect port software (HP Install Network Wizard), go to [www.hp.com/go/inpw\\_sw](http://www.hp.com/go/inpw_sw).
- 2 Install the printer software using the following instructions.

## install the printer software on a Windows 98, Me, 2000, or XP client

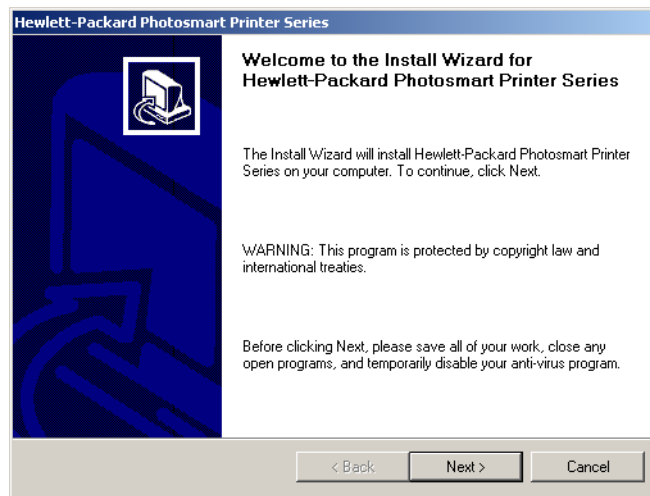
- 1 From the Windows **Start** menu, select **Programs, HP Install Network Printer Wizard**, then **HP Install Network Printer Wizard** again, then click **Next**.
- 2 In the **Identify Printer** dialog box, choose **Select from a list of detected printers** to locate the print server, choose the printer that is connected to the print server, then click **Next**.

OR

Choose **Specify a printer by address**, enter the hardware address or IP address of the print server, then click **Next**.

- 3 In the **Network Configuration** dialog box, choose **Configure network settings for me**, then click **Next**.
- 4 In the **Driver Options** dialog box, choose **Install a driver from a printer installation disk or driver file**, then click **Next**.
- 5 Insert the HP Photosmart printer software CD into your CD-ROM drive.

**Note:** If the printer software displays the following dialog box at any time, click **Cancel**.



**Note:** If your computer does not meet the minimum system requirements, the printer software displays a warning dialog box and the installation cannot continue. Click **Cancel** to close the dialog box.

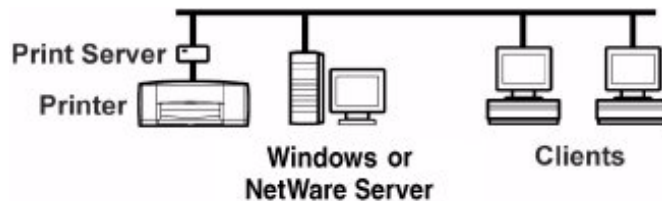


- 6 In the dialog box, navigate to the hphp9x12.inf file (for Windows 98 or Me) or the hphp2k12.inf file (for Windows 2000 or XP).
  - Double-click your language folder. For example, if your language is English, double-click **enu**. See the language code chart on page 11 to find the code for your language.
  - Double-click the drivers folder.
  - Double-click your operating system folder. For example, if your computer's operating system is Windows 98, or Windows Me, double-click **win9x\_me**. If your computer's operating system is Windows 2000 or XP, double-click **win2k\_xp**.
  - If your computer's operating system is Windows 98, or Windows Me, click **hphp9x12.inf**.
- OR
- If your computer's operating system is Windows 2000 or Windows XP, click **hphp2k12.inf**.
- 7 Click **OK**, then click **OK** to close the dialog box.
- 8 In the **Drivers from Disk** dialog box, choose the appropriate printer name, then click **Next**.
- 9 Accept the default name for your printer (recommended) or enter a new name.
- 10 Click **Install**.
- 11 Click **Install** again.
- 12 Click **Finish**.

## connect the printer to a client server network

In the client server connection, you connect your HP Photosmart printer to the network with an HP JetDirect External Print Server. Clients print to the Windows 2000 or NetWare server that is serviced by the HP JetDirect External Print Server. In a client server configuration, the printer software supports Netware 4.1, 5.0, 6.0 and Windows 2000 server operating systems.

**Note:** The HP Jet Direct 175X external print server only supports a Windows 2000 server. The HP JetDirect 310X and 380X external print servers support both Windows 2000 and Netware servers.



To set up a client server printer connection follow these steps:

- 1 Set up the printer and print server.
- 2 Install the printer software on the client server.
- 3 Install the printer software on each of the client computers that need to access the printer.

### 1. set up the printer and print server

- 1 Set up the printer. Follow the Setup Guide included with the printer.
- 2 Set up the HP JetDirect External Print Server. Install and configure the HP JetDirect External Print Server according to the instructions provided with the print server.

### 2. install the printer software on the client server

#### install the printer software on a Windows 2000 client server

- Install the printer software on the Windows 2000 server and share your printer on the network. See the instructions in "install the printer software on the host computer" on page 3.

#### install the printer software on a Netware client server

- Refer to Novell's documentation or Web site for NetWare printer installation methods and NetWare client software.
- See the documentation that came with your HP JetDirect External Print Server or search for "Novell" at [www.hp.com/cposupport](http://www.hp.com/cposupport) for information on setting up an HP JetDirect External Print Server in a NetWare environment and for additional network printing information.
- You can copy your HP Photosmart printer software to a NetWare drive. See the language code table on page 11 to help you select which languages and operating systems you should copy.

**Note:** The HP Jet Direct 175X external print server does not support Netware servers.

### 3. install the printer software on each client

- Install the printer software on each of the client computers. See “install the printer software on each client” on page 5 to find instructions for your operating system.

### language codes and INF file paths

While following the instructions in this guide, you may be asked to browse the CD for an INF file. Files on the CD are organized into language folders. To find the correct INF file, you need to open the appropriate language folder. For example, the **enu** folder (the English folder) contains the English INF file and the **jpn** folder (the Japanese folder) contains the Japanese INF file.

Use the INF file in the same language as your computer's operating system. For example, if your computer's operating system is in German, use the German INF file.

Find the language code for your operating system's language in the table below.

Language	Language code
Simplified Chinese	chs
Traditional Chinese	cht
Czech	csy
Danish	dan
Dutch	nld
English	enu
Finnish	fin
French	fra
German	deu
Greek	ell
Hungarian	hun
Italian	ita
Japanese	jpn
Korean	kor
Norwegian	nor
Polish	plk
Brazilian Portuguese	ptb
Russian	rus
Spanish	esm
Swedish	sve
Turkish	trk

To browse for the INF file for your computer's operating system, use the following paths:

Operating System	Path
Windows 98 or Me	[CD drive letter]: \[language code]\drivers\win9x_me\hphp9x12.inf
Windows 2000 or XP	[CD drive letter]: \[language code]\drivers\win2k_xp\hphp2k12.inf

## Macintosh users: network your printer

The software that came with your printer allows you to set up the printer over a network.

**Note:** Clients on a network do not have access to the CompactFlash, SmartMedia, Secure Digital, MultiMediaCard, or Memory Stick memory card slots. Clients only have the ability to print.

You can print to an HP Photosmart printer using a **Rendezvous** network connection if:

- Your HP Photosmart printer is turned on and connected to your Rendezvous network with an HP JetDirect 310X external print server. If you need more information, see the instructions that came with the print server. Go to [www.hp.com/go/jetdirect](http://www.hp.com/go/jetdirect) for a list of JetDirect print server models.
- Your computer is turned on and connected to your Rendezvous network.

You can print to an HP Photosmart printer using an **AppleTalk** network connection if:

- Your HP Photosmart printer is turned on and connected to your AppleTalk network with an HP JetDirect 175X, 310X, or 380X external print server. If you need more information, see the instructions that came with the print server. Go to [www.hp.com/go/jetdirect](http://www.hp.com/go/jetdirect) for a list of JetDirect print server models.
- Your computer is turned on and connected to your AppleTalk network, and AppleTalk is active on your computer.

The following operating systems are supported:

- Macintosh OS X
- Macintosh OS 9.x

## set up a Rendezvous printer connection in OS X version 10.2 or higher

**Note:** Macintosh network clients cannot access card slots.

- 1 Make sure both the computer and printer are turned on and connected to your Rendezvous network. You will need an HP JetDirect 310X external print server to connect the printer to your Rendezvous network.
- 2 Open the **Print Center** or the **Printer Setup Utility**, and then click the **Add** button.
- 3 Select **Rendezvous** from the pull-down menu.
- 4 Select the correct model from the Printer Model pull-down menu, and then click the **Add** button.

The printer is added to the list of available printers. The default printer has a dot on the left of the printer or appears in bold.

- 5 Close the Print Center or Printer Setup Utility.

## set up an AppleTalk printer connection in OS X

**Note:** Macintosh network clients cannot access card slots.

- 1 Make sure both the computer and printer are turned on and connected to your AppleTalk network. You will need an HP JetDirect 175X, 310X, or 380X external print server to connect the printer to your AppleTalk network.
- 2 Open the **System Preferences**, and then double-click the **Network** icon. Select the **AppleTalk** panel, and then click the **Make AppleTalk Active** check box.
- 3 Click **Apply Now**, and then close the **Network** window.
- 4 Open the **Print Center** or the **Printer Setup Utility**, and then click the **Add Printer** button.
- 5 Select **AppleTalk** from the pull-down menu, and then select the printer zone.
- 6 Select the **HP Photosmart** model from the Printer Model pull-down menu, and then click the **Add** button.

The printer is added to the list of available printers. A dot on the left of the printer indicates that this is the default printer.

- 7 Close the Print Center or the Printer Setup Utility.

## set up an AppleTalk printer connection in OS 9.x

**Note:** Macintosh network clients cannot access card slots.

- 1 Make sure both the computer and printer are turned on and connected to your AppleTalk network. You will need an HP JetDirect 175X, 310X, or 380X external print server to connect the printer to your AppleTalk network.
- 2 From the **Apple** menu, select **Chooser**.
- 3 Click the **Active** button next to AppleTalk.
- 4 In the left side of the Chooser window, click the **HP Photosmart** printer icon.
- 5 Select the printer zone, if necessary.
- 6 In the right side of the Chooser window, double-click the **HP Photosmart** model with the JetDirect icon. Check that the **Type** setting matches the printer model you have selected. If you have an Automatic Two-Sided Printing Module installed, check that the **Duplex Unit** setting is set to **Installed**. Click **OK**.
- 7 Close the Chooser.



ENERGY STAR® is a U.S. registered mark. As an ENERGY STAR® partner, Hewlett-Packard Company has determined that this product meets the ENERGY STAR® guidelines for energy efficiency.



[www.hp.com](http://www.hp.com)  
©2004 Hewlett-Packard Company  
01/04