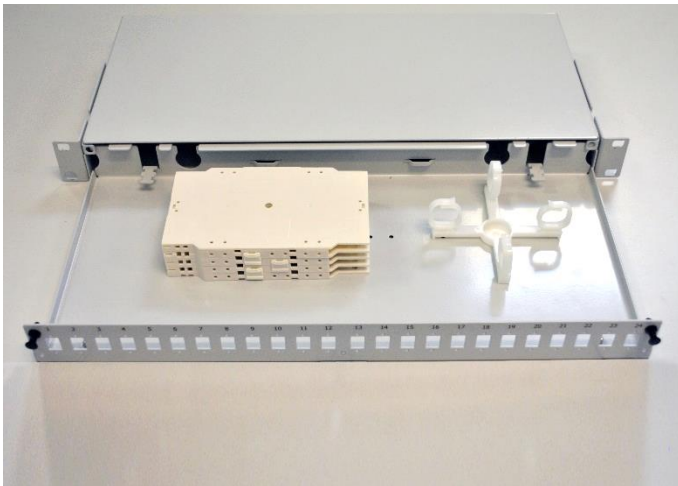


Sliding Subrack One Unit



TECHNICAL SPECIFICATION



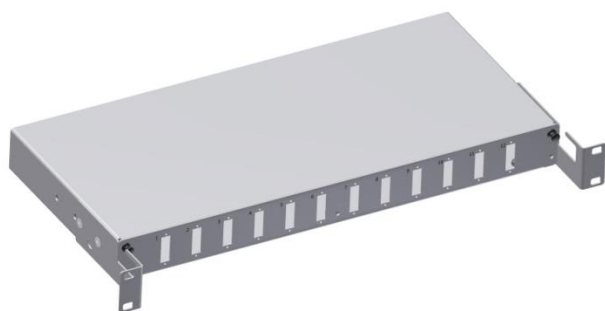
GENERAL

Optoplast Sliding Subrack One Unit is designed to provide a reliable indoor cable junction or termination in telecom and premises networks.

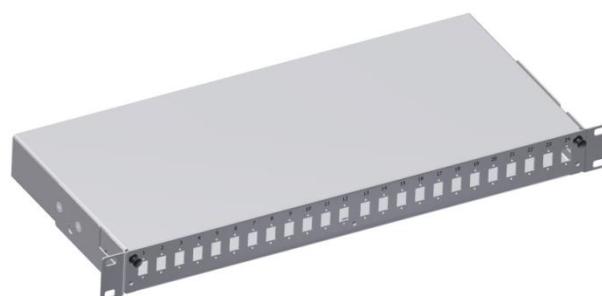
PRODUCT DESCRIPTION

The Sliding Sub-Rack is made up of one main frame, one sliding shelf and one pair of brackets to allow different mounting solutions.

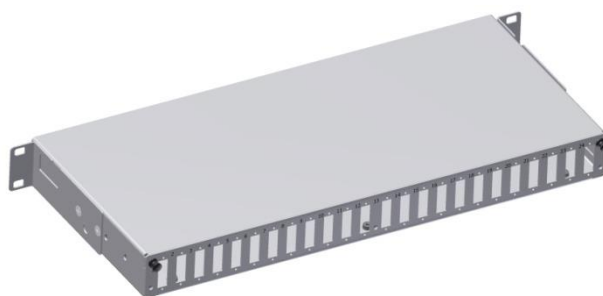
- Three types of front panels for 12 SC Dx, 24 SC Dx and 24 SC Sx adapters
- Black numbers to identify each adapter position
- Front panel with 24 SC Sx holes for 48fo LC Dx, MTRJ
24fo SC sx, E2000 Sx, any Sx adapter rectangular flange
- Front panel with 24 SC Dx holes for 96fo LC quad
48fo SC Dx, any Dx adapter rectangular flange
- Front panel with 12 SC Dx holes for 48fo LC quad
24fo SC Dx, any Dx adapter rectangular flange
- 19-inch or 21-inch (ETSI) brackets
- Both types of brackets can be assembled in 3 different positions just by combining the holes of the brackets with the rivets on each side of the subrack.



front posts - inward mount



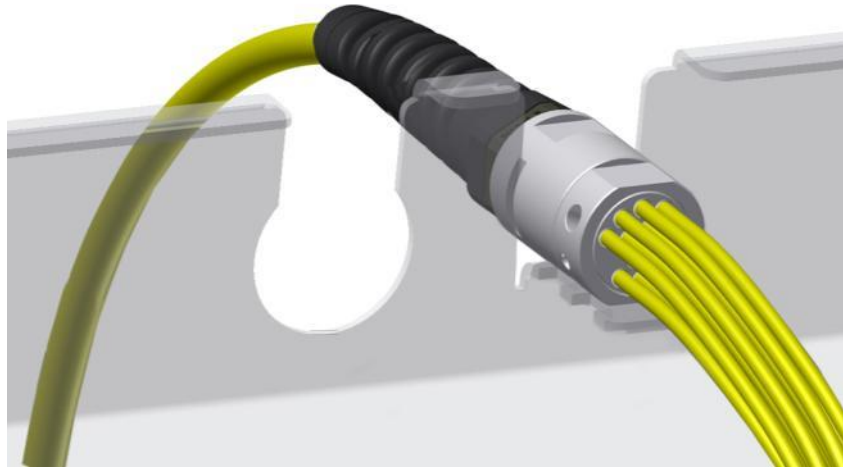
front posts - flush mount



rear posts mount

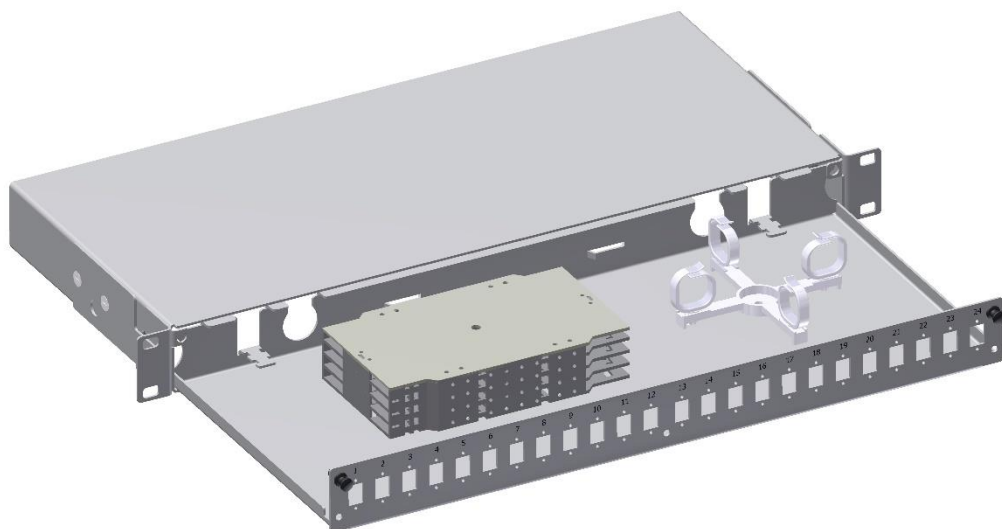
- Weight of the sub rack without adapters and pigtails 2.9 kg
- Weight of the Front Shelf with Plexiglas protection cover 0.5 kg
- 4 entry holes are located in the rear part of the sliding frame; two entry slots are designed for a quick and easy lock of the Optoplast Pre-terminated Cables (see image below) or for installing cables with a simple cable tie.

Two slots with a diameter of 22.7mm at the widest point allow to mount M22 or PG16 standard cable glands easily and quickly with the holding nut already installed on the gland; no need to insert each connector into the hole when using pre-terminated cables.



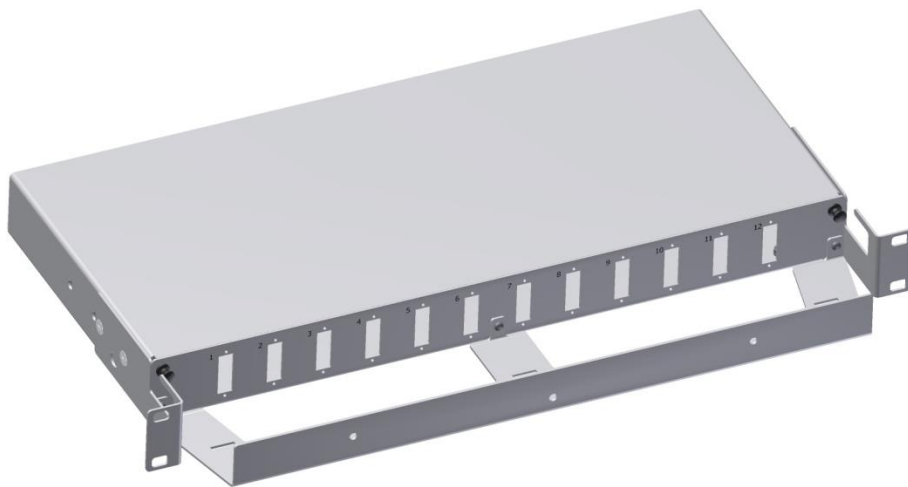
Rectangular Slots	Optoplast Pre Terminated Cables
Rear	1x12 fo or 1x24 fo each entry

The Sliding Sub-Rack can house up to four splice trays and each splice tray has two splice holders of six positions each. Each sub-rack can manage max 48 spliced fibres or 96 pre-terminated fibres.

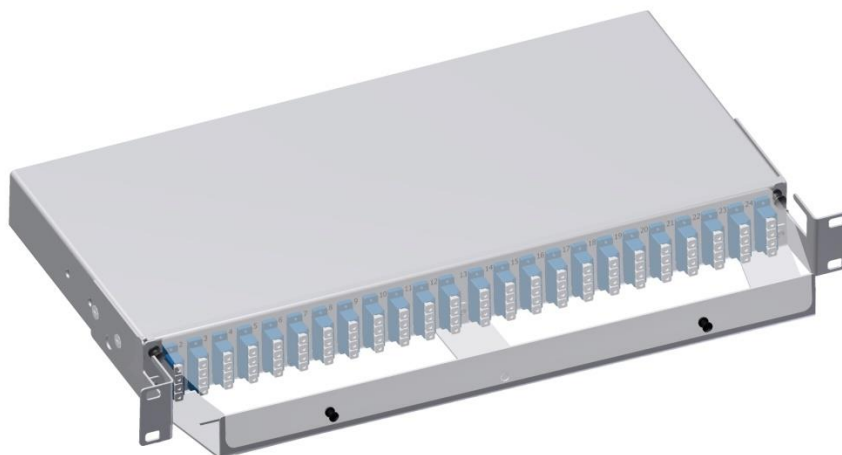


A C C E S S O R I E S

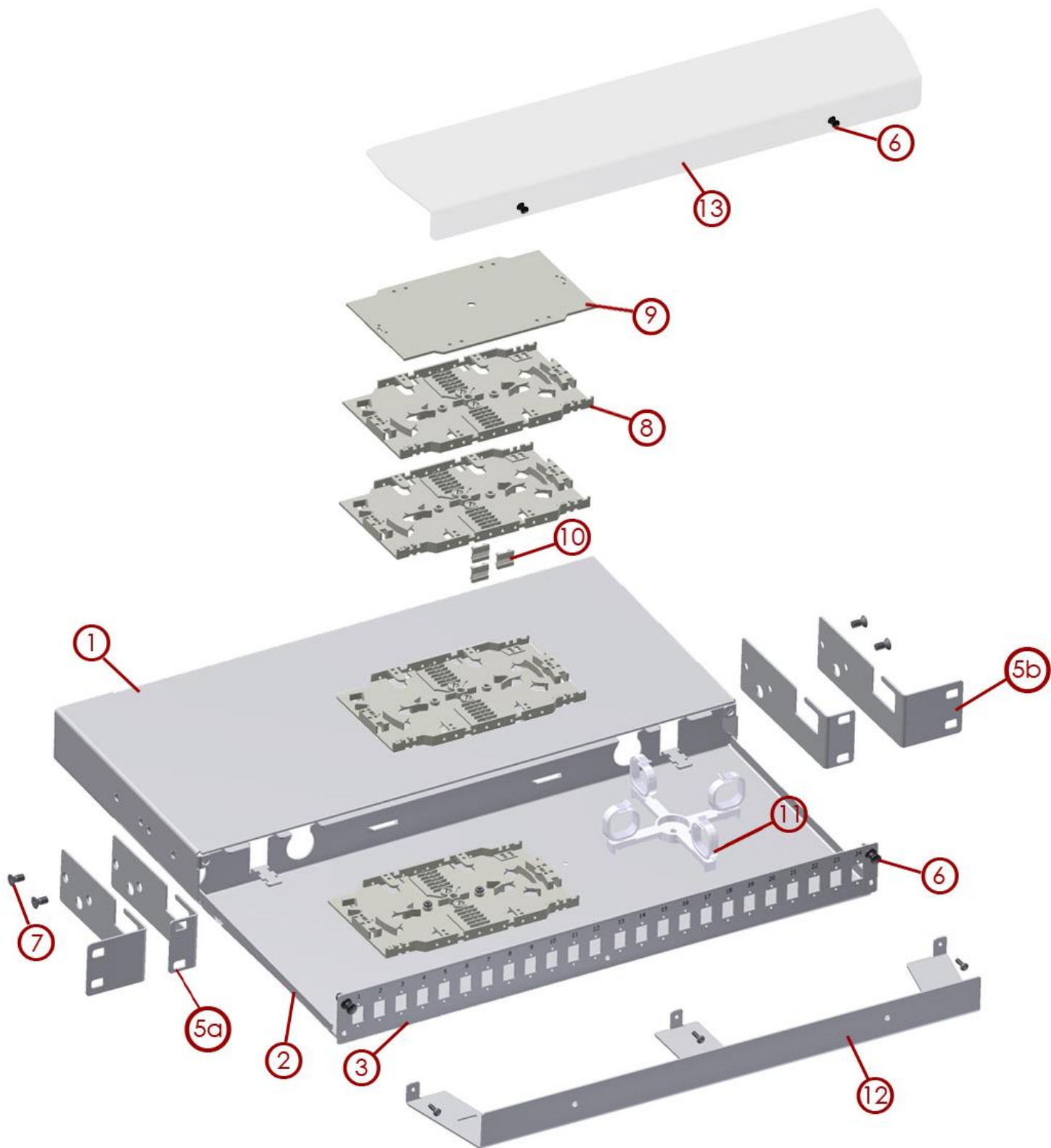
- The base splicing tray can be fixed to the frame in three different positions: on the right side, centred or on the left side.
- Up to three additional trays can be added to the base tray by using snap-in plastic hinges.
- Snap-in cover for top tray.
- A fiber routing can be assembled beside the splicing trays.
- Dust caps for any empty panel holes.
- Front Shelf Cable Guide with 3 pairs of slots for cable ties.
- Plexiglas Protection Cover of the front shelf with snap in locking system.



Front Shelf Cable Guide



Front Shelf Cable Guide with Protection Cover



M A T E R I A L S

N°	Component	Material
1	Fixed Frame	1.5 mm Sheet-Steel Dust Painted Grey RAL 7035
2	Sliding Frame	1.5 mm Sheet-Aluminium Dust Painted Grey RAL 7035
3	Front Panel	1.5 mm Sheet-Aluminium Dust Painted Grey RAL 7035
4**	Anchor Rivet Bush	Zinc Plated Steel
5	5a. 19" Brackets or 5b. 21" ETSI Brackets	1.5 mm Sheet-Steel Dust Painted Grey RAL 7035
6	Snap Latch	Nylon 6 (Pin) – Polycarbonate (Keeper) UL-94-V2
7	Screws	Zinc Plated Steel
8*	Splicing Tray with Splice Holders	White ABS
9*	Splicing Tray Cover	
10*	Splicing Tray Hinge	
11*	Fiber Routing Accessory	Nylon 6/6
12*	Front Shelf Cable Guide	1.5 mm Sheet-Steel Dust Painted Grey RAL 7035
13*	Shelf Protection Cover	2 mm Transparent Plexiglas

* **Optional accessory**

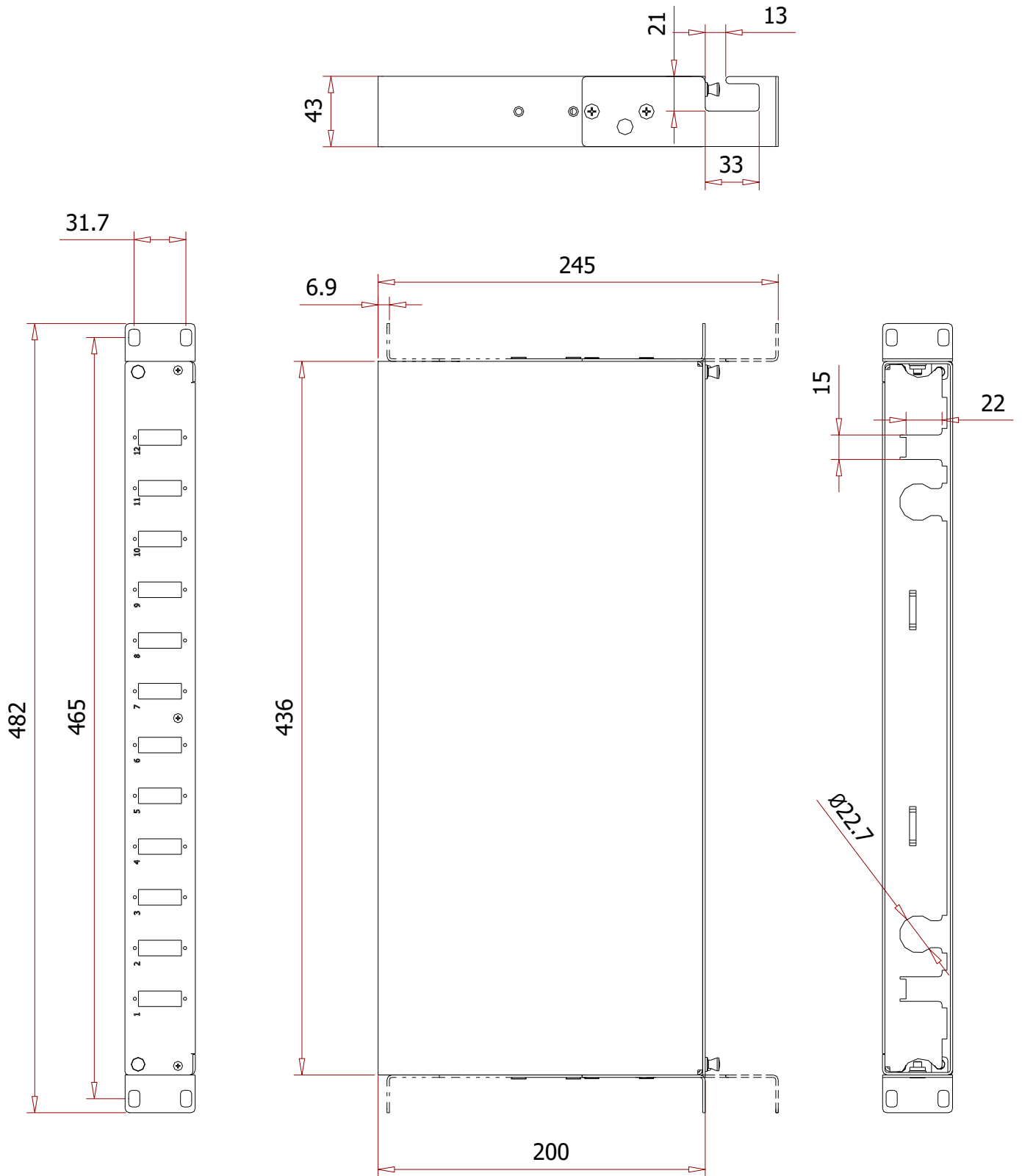
** not visible in the exploded view pag 4

P A C K A G I N G

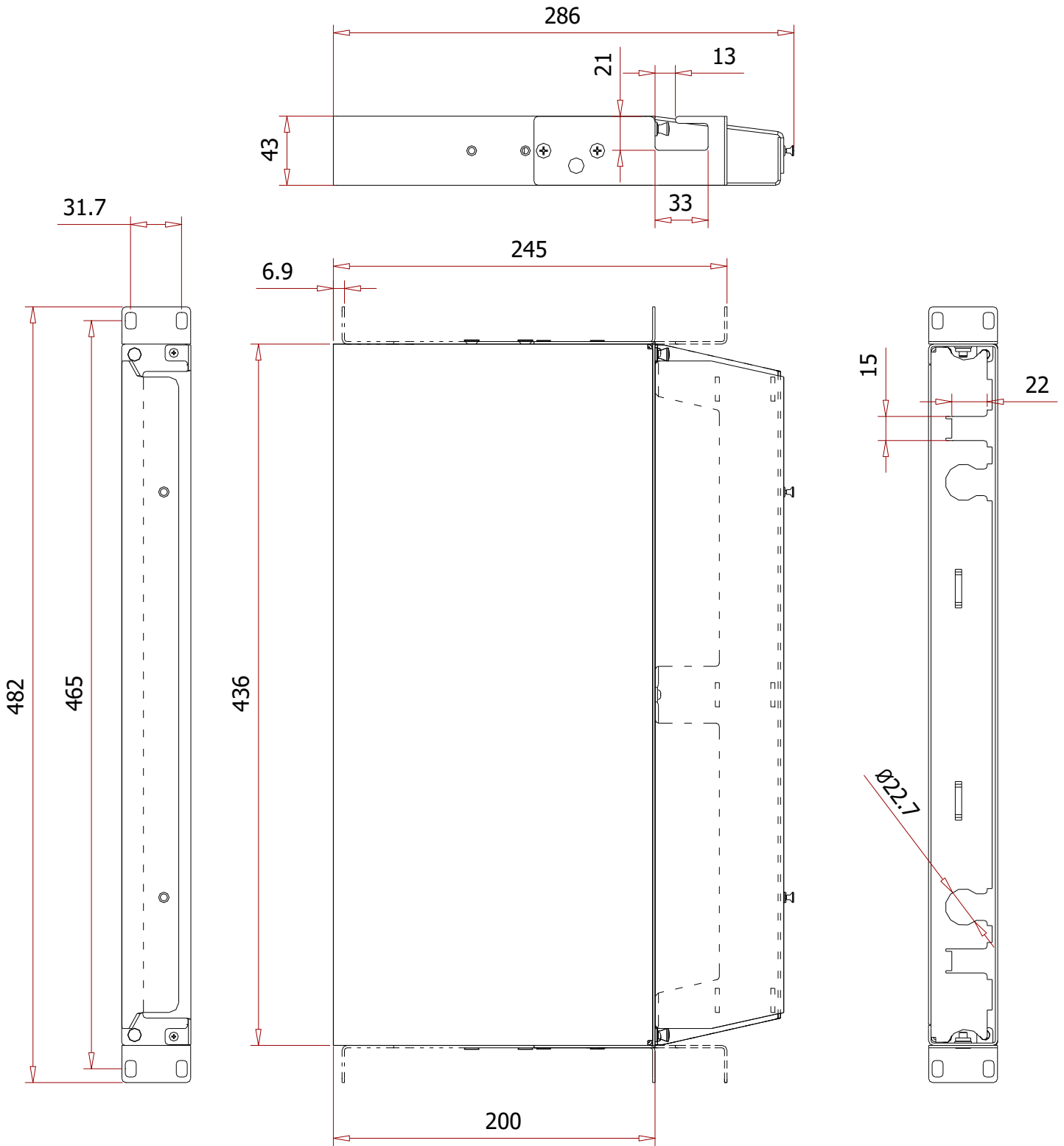
Standard packaging : One sub-Rack in a reliable cardboard box.

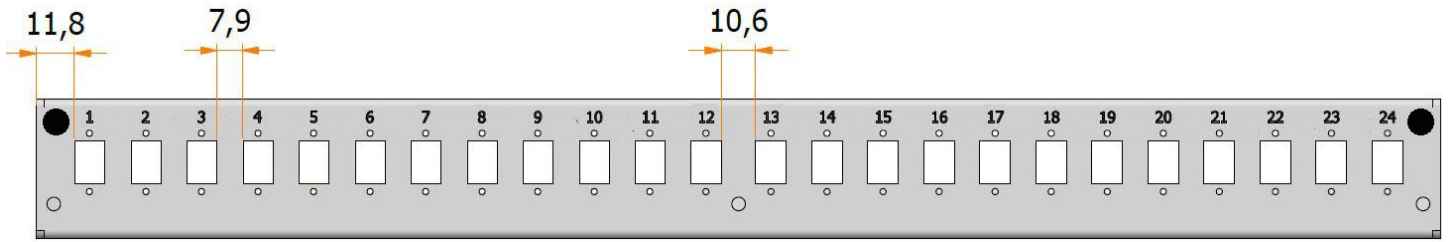
Accessories are inside the cardboard box of the sub-rack.

19 inches Sliding Sub-Rack Unit – plain

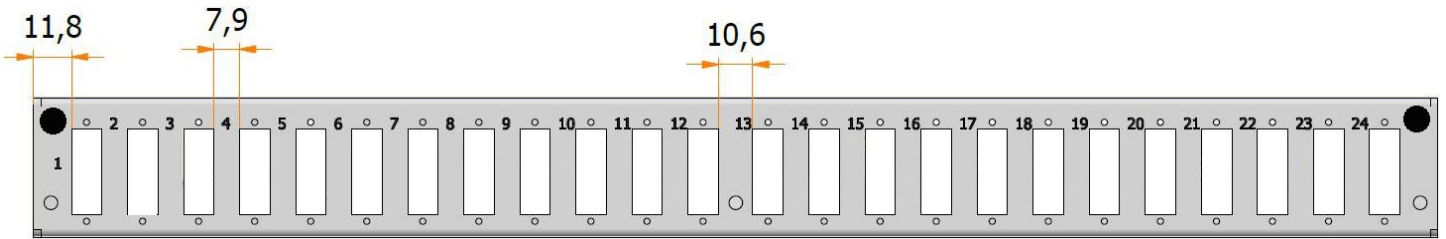


19 inches Sliding Sub-Rack Unit – with front shelf

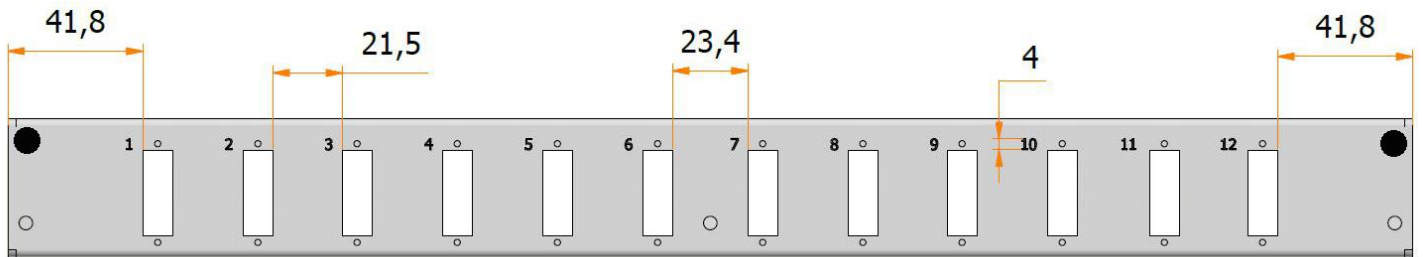




24 SC Simplex Front Panel



24 SC Duplex Front Panel



12 SC Duplex Front Panel

E N D O F S P E C I F I C A T I O N