

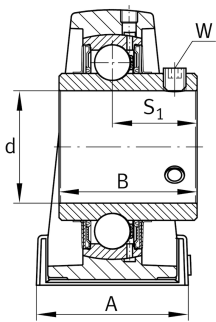
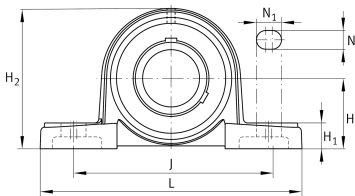
FAG

UCP205-16

Plummer block housing unit

Plummer block housing units UCP, cast iron housing, with long base, radial insert ball bearing with grub screws in inner ring, RSR seals

Technical information



Your current product variant

| | | |
|-------------------|----|----------------------|
| Material | GG | Grey cast iron |
| Housing clearance | J7 | Normal swivel torque |

Main Dimensions & Performance Data

| | | |
|-----------------|----------|-----------------------------------|
| d | 25.4 mm | Bore diameter |
| L | 140 mm | Length total |
| H ₂ | 71 mm | Height |
| C _r | 14,900 N | Basic dynamic load rating, radial |
| C _{0r} | 7,800 N | Basic static load rating, radial |
| C _{ur} | 410 N | Fatigue load limit, radial |
| ≈m | 0.79 kg | Weight |

Mounting dimensions

| | | |
|----------------|--------|----------------------|
| J | 105 mm | Distance fixing bore |
| N | 13 mm | Width (slot) |
| N ₁ | 19 mm | Length (slot) |



Dimensions

| | | |
|----------------|---------|---------------------------------------|
| H | 36.5 mm | Distance shaft axis |
| A | 38 mm | Width (base) |
| H ₁ | 15 mm | Heigth (base) |
| B | 34.1 mm | Width |
| S ₁ | 19.8 mm | Distance of raceway to locking collar |
| Q | M6 | Connection thread for lubrication |

Additional information

| | |
|----------|---------------------|
| P205 | Housing |
| UC205-16 | Bearing designation |

Temperature range

| | | |
|------------------|--------|----------------------------|
| T _{min} | -20 °C | Operating temperature min. |
| T _{max} | 120 °C | Operating temperature max. |