

FEATURES

- Non-latching and latching versions which are guarded
- Stock no. 208-3265 has two stage operation
- Screw terminals and self-lifting clamp for connection of leads
- Sealed to IP67
- Operating Temperature: -25°C to 60°C
- Ergonomic design
- Yellow color protective guard with a black base

RS PRO Momentary Staggered Heavy Duty Foot Switch - Die Cast Aluminium Case Material, DPST + DPST, 6 A (AC15 230V), 6 A

RS Stock No.: 208-3265



RS Professionally Approved Products bring to you professional quality parts across all product categories. Our product range has been tested by engineers and provides a comparable quality to the leading brands without paying a premium price.

Product Description ATTRIBUTE 1

RS PRO rugged heavy duty guarded foot switches which are ideal for industrial applications. The protective guard provides extra user safety and stops the machine from accidentally starting. The guards are large enough for safety shoes to be worn when using the foot switches.

This range of heavy duty foot pedal switches includes:

208-3265 - Momentary Staggered, Single Switch With Double Action Contacts

211-0711 - Momentary Single Non-latching Switch

228-2103 - Momentary Double Pole Double Throw (DPDT)

440-5566 - Momentary Single Pole Single Throw (SPST)

771-9243 - Momentary Double Pole Double Throw (DPDT)

841-772 - Latching 1NO 1NC

General Specifications

| | |
|------------------------------|---|
| Contact Configuration | DPST + DPST |
| Switch Operation | Momentary Staggered |
| Case Material | Die Cast Aluminium |
| Switch Environment | Heavy Duty |
| Contact Material | Silver |
| Guard Cover | Yes |
| Colour | Yellow |
| Applications | Foot switches are commonly used in applications where hands-free control is more practical or safer. They can be found on: Industrial machinery and smaller power tools, Hospital beds, Dentist Chairs, Lamps |

Electrical Specifications

| | |
|------------------------------------|-------------------------------|
| Contact Voltage Rating (AC) | 500V |
| Contact Voltage Rating (DC) | 24V |
| Contact Current Rating | 6A (AC15 230V), 6A (DC13 24V) |

Mechanical Specifications

| | |
|------------|-----------------------|
| Length | 264mm |
| Height | 155mm |
| Dimensions | 264mm x 163mm x 155mm |
| Width | 163mm |

Operation Environment Specifications

| | |
|-----------------------|---------------|
| Operating Temperature | -25°C to 60°C |
|-----------------------|---------------|

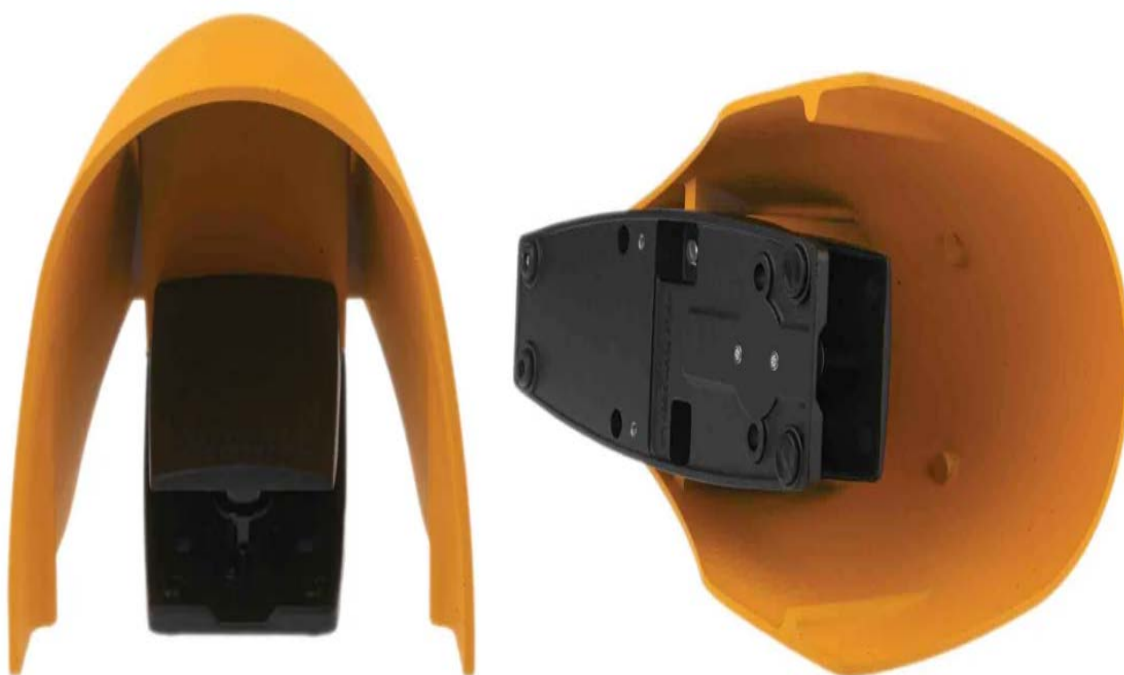
Protection Category

| | |
|-----------|------|
| IP Rating | IP67 |
|-----------|------|

Approvals

| | |
|---------------------------|--|
| Standards Met | EN 60204-1, EN 60947-5-1, IEC 947-5-1, VDE 0660 Part 200 |
| Compliance/Certifications | EN60204-1/EN 60947-5-1, RoHS |





Outline Dimensions

