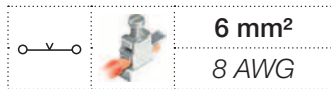


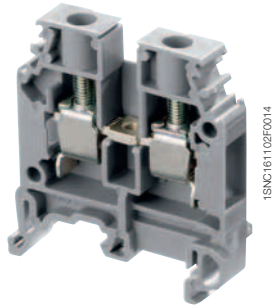
# M6/8 screw clamp terminal blocks

## Feed-through - 8 mm 0.315 in spacing



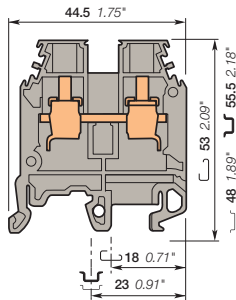
6 mm<sup>2</sup>  
8 AWG

2



1SNC161102P0014

M6/8



8 mm 0.315 in spacing

### Description

- Flexibility: snap onto symmetrical and asymmetrical rails,
- Many colors are available in addition to our generic grey, to help you quickly identify any of specific functions.

### Ordering details

Description	Color	Type	Order code	Pkg pce	Weight (1 pce) g
Feed-through	Grey	M6/8	1SNA115118R1100	50	12.80
	Blue	M6/8.N	1SNA125118R1300	50	12.80
	Orange	M6/8	1SNA105004R2200	50	12.80
	Yellow	M6/8	1SNA105118R2000	50	12.80
	Red	M6/8	1SNA400186R2100	50	12.80
	White	M6/8	1SNA400187R2200	50	12.80
	Black	M6/8	1SNA400239R1500	50	12.80
	Beige	M6/8	1SNA195118R1200	50	12.80

### Main technical data

	IEC	UL	CSA
1 conductor per clamp	Rigid - Solid / Stranded	0.5-10 mm <sup>2</sup>	22-8 AWG
	Flexible	0.5-6 mm <sup>2</sup>	24-8 AWG
	with insulated ferrule	6 mm <sup>2</sup>	
	Gauge	A5	
Rated current / Rated cross section	41 A / 6 mm <sup>2</sup>	50 A / 8 AWG	50 A / 8 AWG
Rated short-time withstand current (1s)	720 A		
Rated voltage	1000 V	600 V	600 V
Impulse withstand voltage	8000 V		
Protection	IP20	NEMA 1	

### Mounting instructions

Rail		G32, TH 35-7.5, TH 35-15
Wire stripping length		12 mm 0.47 in
Tool		Flat screwdriver Ø 4 - 5 mm Ø 0.157 - 0.197 in
Torque		0.8 - 1 N.m 7.1 - 8.9 lb.in

The connecting capacity data for one Rigid - Solid / Stranded - Flexible conductor (when apply) is a mandatory information required by IEC, UL and CSA standards. All other data are provided as supplementary information only. For more details, please consult our CB, UL or CSA certificates and technical datasheet available on <http://www.ABB.com>

CE	UL	CSA	Gost R
----	----	-----	--------

### Accessories

Description	Color	Type	Order code	Pkg pce	Weight (1 pce) g		
1 End stops	Grey	BAM2	1SNA206351R1600	50	12.00		
		BADL	1SNA399903R0200	50	4.70		
2 End sections	Grey	FEM6	1SNA118368R1600	20	2.40		
3 Jumper bars		2 poles	41 A	BJM18-2	1SNA176669R1600	10	4.50
		3 poles		BJM18-3	1SNA176670R1300	10	6.00
		4 poles		BJM18-4	1SNA176671R0000	10	10.00
		5 poles		BJM18-5	1SNA176672R0100	10	12.22
		10 poles		BJM18-10	1SNA176673R0200	10	20.00
4 Lateral jumper bars		2 poles	50 A	PC8-2	1SNA116538R1700	10	3.00
		10 poles		PC8-10	1SNA163313R2400	10	
5 Cross spacing jumpers		5 mm 0.200 in - 6 mm 0.236 in - 8 mm 0.315 in		EL6	1SNA173627R2100	10	0.10
		Universal screw jumper bar kit N <sup>I</sup>		BJDP1	1SNA179623R0300	10	7.00
		Universal screw jumper bar kit N <sup>III</sup>		BJDP3	1SNA179625R0500	10	5.00
6 Circuit separators	Grey	0 mm	0 in	SCM6	1SNA113003R1000	10	0.30
		3 mm	0.118 in	SCFM6	1SNA114825R0500	20	4.00
				SCFCV1-2	1SNA116795R1100	10	8.00
				SCF6	1SNA118707R0300	20	
				CPV1-2	1SNA176816R1200	1	
7 Protecting covers	Transparent	Length 1 m 39 in		CPM	1SNA187312R1400	1	
		Length 500 mm 19.70 in		RC810	1SNA234000R0200	1	8.20
8 Terminal block markers	White	Blank card					

Complete list of accessories is indicated in the terminal block datasheet. Some accessories such as jumper bars may modify the terminal block's ratings: complete information in the accessories catalogue pages.

### Ground screw clamp terminal blocks

Description	Color	Type	Order code	Pkg pce	Weight (1 pce) g
Ground Profile aligned with M6/8...	Green-yellow	M6/8.P	1SNA165114R1700	50	26.00

All the technical data for UL/CSA standard and dimensions in inches are in italic. Technical data valid for copper conductors only.

