

Datasheet

Stock No: 286-3342

RS Pro Round Tube Joint Clamp, strut profile Type 1

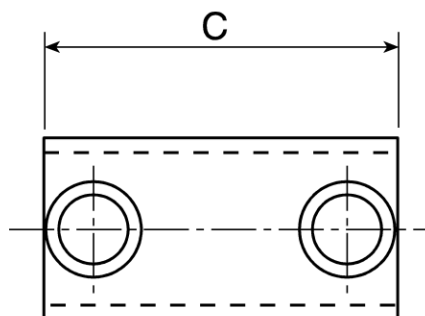


Product Details

Sleeve Joint

For joining tube of the same size

Dimensions (mm)	
Tube Size Ref.	C
1	89
2	102
3	102





ENGLISH

Specifications:

Structural Element Type	Round Tube
Connector Type	Joint
Fits Strut Profile	Type 1
Fits Tube Diameter	33.7mm
Product Family	RS Handrail System
Material	Cast Iron
Product System	149