

FEATURES

- Pedal operation.
- 3-position pedal operation with spring return (advance, hold and release)
- Tilting handle for easy grip on transport
- Single-acting cylinder compatibility
- Double air motor for large oil flows (l/min) and high working pressures (700 bar)
- Easy maintenance
- Removable pyrex oil level indicator for maximum easy refill
- Maximum Working Pressure 700 bar
- Made in Italy

RS PRO Portable Hydraulic Foot Pump

RS Stock No.: 309337



RS Professionally Approved Products bring to you professional quality parts across all product categories. Our product range has been tested by engineers and provides a comparable quality to the leading brands without paying a premium price.

Product Description

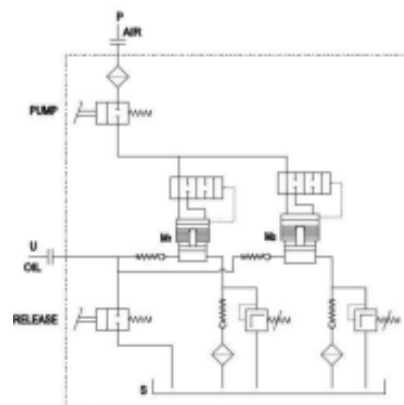
RS PRO Hydraulic Foot Pump is an air-hydraulic pump with double pneumatic single-acting motor and pedal operated. Tank capacity of 10L, oil flow 0.26 (l/min) at 700bar and max working pressure 700bar. is a single-acting pump with a three-position foot pedal and a max working pressure 700 bar.

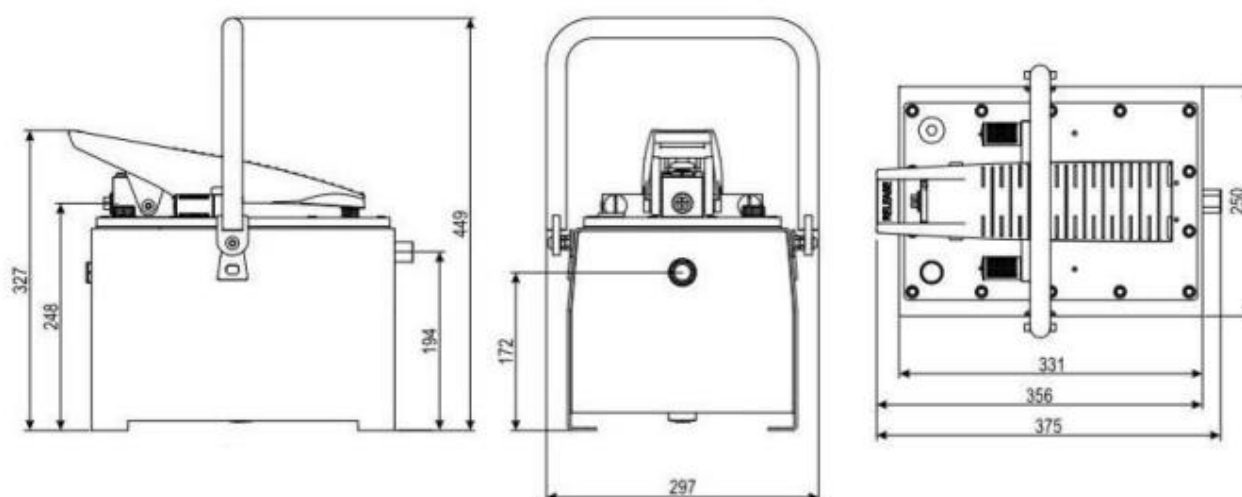
Applications: Industrial tools, large plants, lifting, clamping systems, large cylinders

- Pedal operation
- Unmistakable pedal design
- Tilting handle for easy grip on transport
- 3-position pedal operation with spring return (advance, hold and release)
- Single acting cylinder compatibility (double acting cylinder allowed)
- Secondary out port for oil return to the tank
- Double air motor for large oil flows (l/min) and high working pressures (700 bar)
- Compact and sturdy construction for heavy duty and long durability
- Easy Maintenance
- No air lubricated required.
- It works through the normal pneumatic network.
- Filling oil cap with ventilation during use
- Internal oil pressure relief valve to protect the circuit parts.
- Removable pyrex oil level indicator for maximum easy refill
- Slots on the base support for easy fix on the application
- Lightweight
- Double silencer for maximum comfort and safety during use (85dBa)
- 10 L tank capacity for small and large cylinders

Specifications

Type	Air-Hydraulic Pump
Maximum Operating Pressure	700 bar
Single/Two Speed	Double
Cylinder Compatibility	Single Acting
Usable Oil Capacity	9l
Tank Capacity	10l
Max oil flow nominal (l/min)	0,26 (700bar)
Oil Flow (Unload)	8.5 l/min
Oil Flow (Load)	0.265 l/min
Average Air Consumption	780 l/min
Oil Port	3/8 NPT
Energy Source	Air
Pneumatic Range (Bar)	4-8 (10 max) bar
Dimensions	375 x 297 x 327 mm
Weight	24.6 kg
Height	327 mm
Width	297 mm
Length	375 mm
Dimensions (Packed product)	410 x 315 x 380 mm
Outlet Type	NPT3/8



Drawings**Additional Information**

Please note this is individual pump, no accessories included.

Please review our RS PRO Hydraulic Hand Pump Guide to see whole Range & Accessories available.

IMPORTANT: