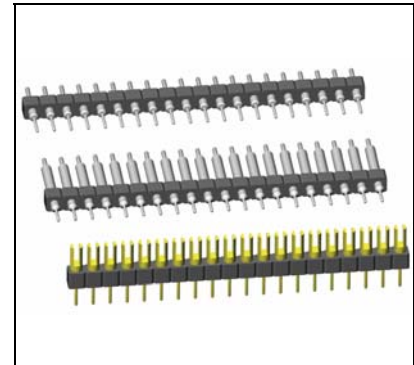
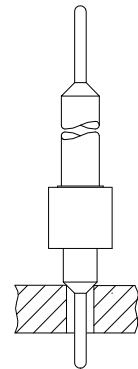


Board to Board Terminals

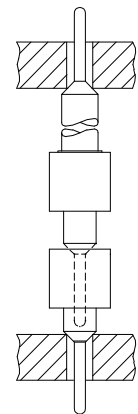
<p>077</p>	<p>057</p>	<p>037</p>
<p>058</p>	<p>059</p>	<p>056</p>
<p>542</p>	<p>038</p>	<p>353</p>
<p>036</p>	<p>Many other terminals and custom specific terminal styles are available on request, or refer to the pages 46 to 48 of this catalogue.</p>	



Application Examples



Possible Terminals:
 037; 056; 057; 058; 059
 077; 220; 542; 544
 562; 583; 770



Possible Terminals:
 037; 056; 057; 058; 059
 077; 078; 542; 544
 562; 583; 770

How to order

XXX - x XX - X xxx - xx

<p>Series SIB = single-in-line strips. DIS = dual-in-line strips... TIS = triple-in-line strips..</p>	<p>Rows 1 2 3</p>	<p>Nbr of contacts 1-row = 02 to 40 2-row = 04 to 80 3-row = 06 to 96</p>	<p>Insulator S = Plastic E = Epoxy FR4 (TIS Series only) dimension see socket strip page 5</p>	<p>Terminal style see drawings above or refer to pages 46 to 48 of this catalogue for other types.</p>	<p>Plating - 55 = gold - 99 = tin (leadfree)</p>
--	--	---	---	---	---