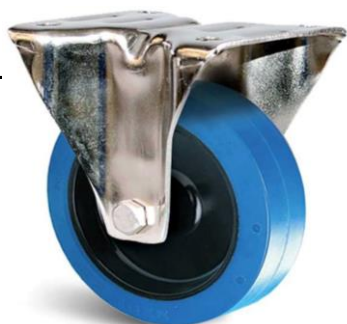


## Description

STAINLESS STEEL TOP PLATE CASTOR, BLUE ELASTIC RUBBER 100MM

### Fixed

**KF41BA100-571RX**



### Part Number

#### Swivel

**KP41BA100-571RX**

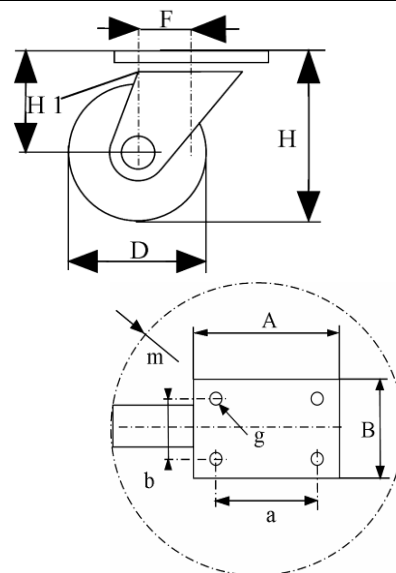


#### Swivel and brake

**KP41BD100-571RX**



	Fixed	Swivel	Swivel+brake
Wheel Diameter ØD	100 mm		
Overall Height H	128 mm ±1		
Size of plate A X B	105 x 85 mm±1		
Plate hole centres a x b	80 x 60 mm±0,3		
Plate hole	9 mm		
Offset F ±1	\	36 mm	36 mm
Width of Tread	36 mm±0,5		
Hardness of tread	shore A ± 70°		
Load capacity	150 Kg		
Weight	0,6 kg	0,73 kg	0,88 kg
Temperature	- 20 / + 60 °C		



### Castor Assembly :

Pressed stainless steel -AISI 304-. Swivel on two rows of balls.  
 Fastening by top plate.  
 Total lock. Metal pedal.

### Wheel :

Wheel centre made of Black Polyamide.  
 Tread : Solid, Blue bonded elastic Rubber. Non marking.  
 Hub : Stainless steel roller bearing.

### Features :

Low starting effort. High load capacity.  
 Smooth and quiet handling on all types of floors.  
 Absorbs shocks and vibrations. Resistant to wear.  
 100% anti-corrosion. Easy to clean. Specially designed for humid environments.  
 Suited for Food industry, Hospital or Industrial Kitchen equipment.  
 Non staining blue rubber.  
 Medium duty.