

Customer Information Sheet

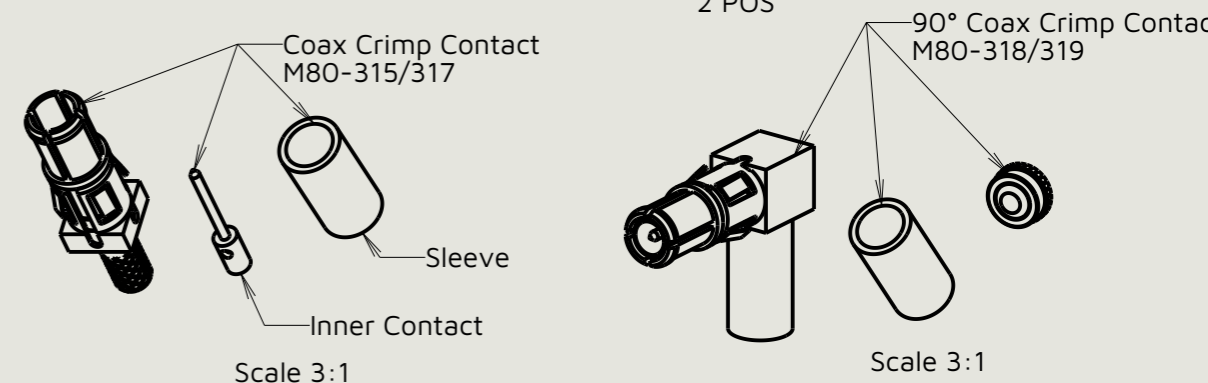
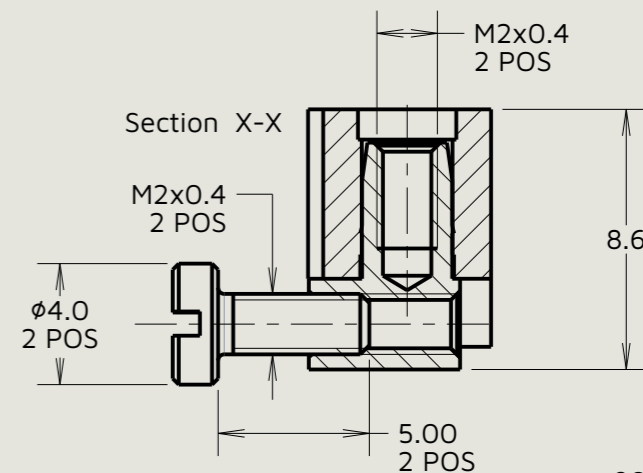
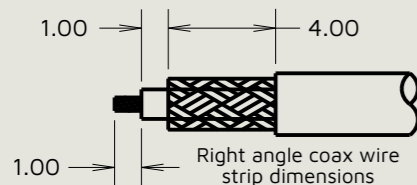
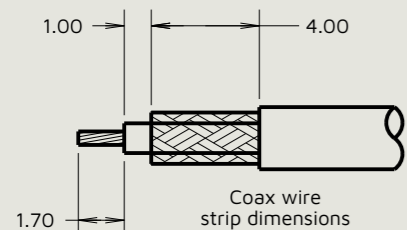
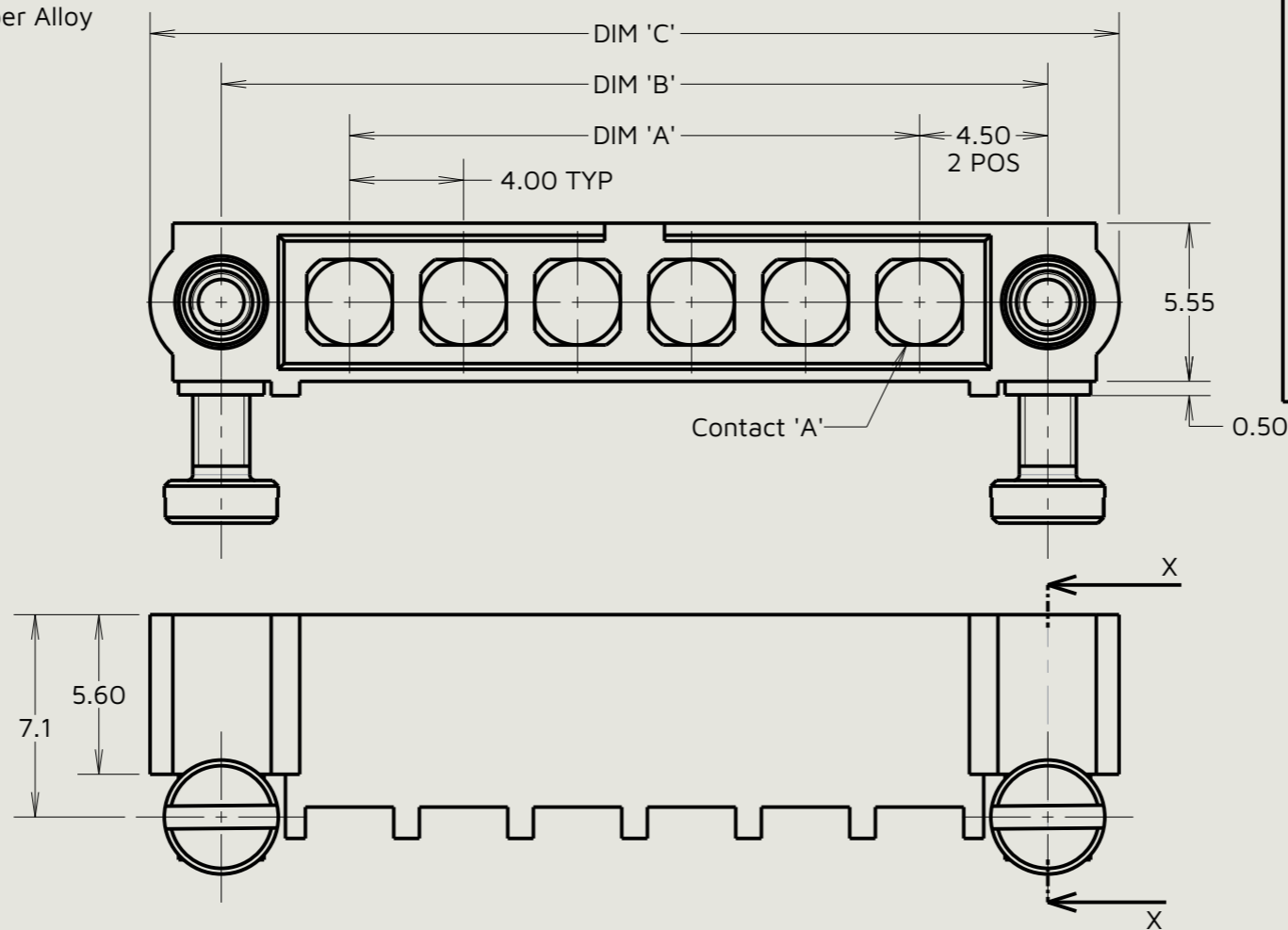
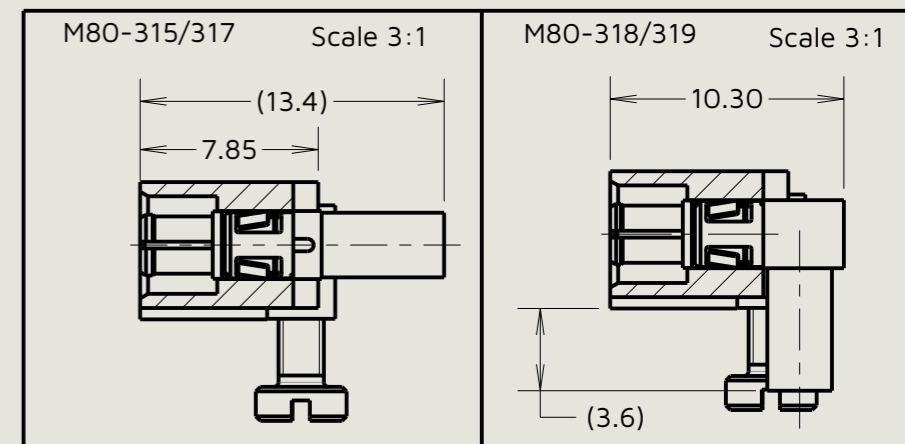
Coax Crimp and Solder Contacts Only

Specifications:

Material:
 Housing: Glass Filled PPS, UL94V-0, Black
 Coax Contact: Body, Sleeve, Inner Contact, End Plug = Copper Alloy
 Latching Collar = Beryllium Copper
 Insulator = PTFE
 Jackscrew, Screw = Stainless Steel

Finish:
 Coax Contact Body, Sleeve, Inner Contact, End Plug = Gold
 Latching Collar: = Nickel

Packing:
 Bag
 For Complete Specification See Component Specification C005XX (Latest Issue)



Order Code:
M80-5000000M5-XX-XXX-00-000

Total No. Of Contacts:
 02 To 12

Special Contacts:
 315 = Coax Contact 2.0mm Crimp M80-315
 317 = Coax Contact 2.7mm Crimp M80-317
 318 = Coax Contact 2.0mm Right- Angle Crimp M80-318
 319 = Coax Contact 2.7mm Right- Angle Crimp M80-319

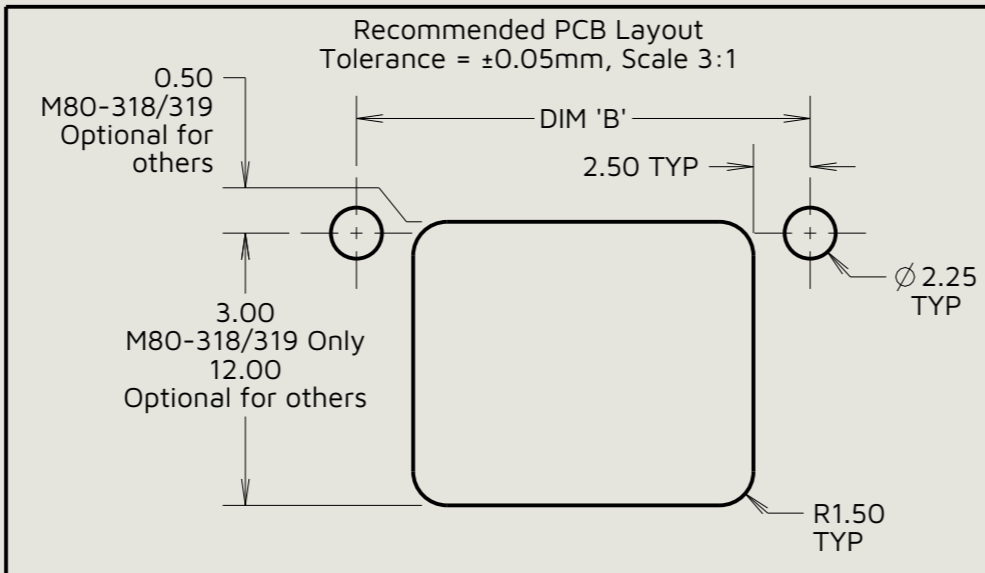


Table 1: Dimension Variants

Dimension	Calculation
DIM 'A'	4 x No. Of Contacts - 4.00
DIM 'B'	4 x No. Of Contacts + 5.00
DIM 'C'	4 x No. Of Contacts + 10.0

MJ	13	28.01.26	37709
Initials	Rev.	Date	CO
MGP	4	16.07.13	12116

- Notes:**
- Connectors are supplied with Contacts and Board Mount Screws, not assembled.
 - Coax contact is supplied as a kit of parts: Body, Main Insulator, Inner Contact and Latching Collar are pre-assembled. Sleeve and Insulated End Plug assembly are separate.
 - For extra coax contacts, use part numbers M80-315/317/318/319.
 - Contact extraction tool = Z80-290.
 - Recommended hand crimp tool for Inner Coax Contact = Z80-292 with positioner Z80-291. Recommended hand crimp tool and die set for Sleeve = Z80-293.
 - Instruction sheets are available.



This drawing and any information or descriptive matter set out hereon are confidential and copyright property of the Harwin group and must not be disclosed, loaned, copied or used for manufacturing, tendering or for any other purpose without their written permission.

TOLERANCES
 X. = ±0.50mm
 X.X = ±0.30mm
 X.XX = ±0.10mm
 X.XXX = ±0.01mm
 Angles = ±5°
 Unless stated

Third angle projection

 Sheet scale: 4:1
 Do not scale
 Sheet size: A3

MATERIAL:
 See Specification

FINISH:
 See Specification

Title:
 Datamate Mix-Tek Male Right-Angle Boardmount Jackscrew Connector

Drawing number:
M80-5000000M5-XX-XXX-00-000

SHT 4 OF 6

Customer Information Sheet

Power Crimp And Solder Contacts Only

Specifications:
 Material:
 Housing: Glass Filled PPS UL94V-0, Black
 Power Contact:
 Body = Copper Alloy
 Latching Collar = Beryllium Copper
 Jackscrew, Screw = Stainless Steel
 Finish:
 Power Contact:
 Body = Gold
 Latching Collar = Nickel
 Packing:
 Bag
 For Complete Specification See Component Specification C005XX (Latest Issue)

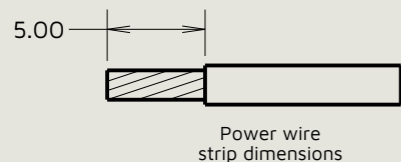
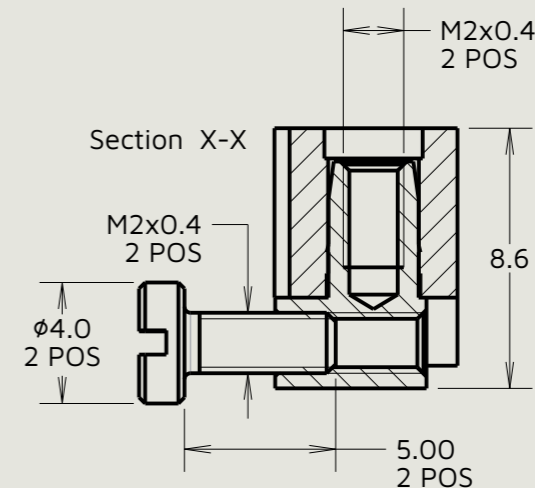
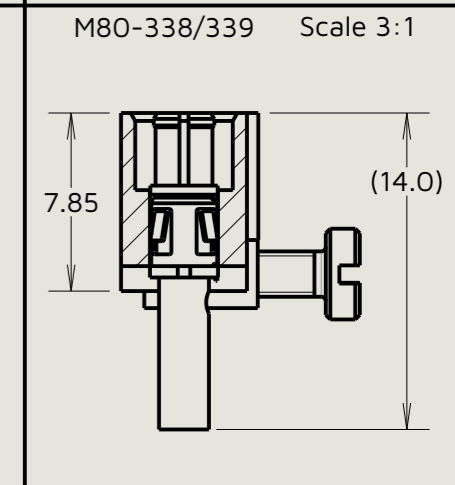
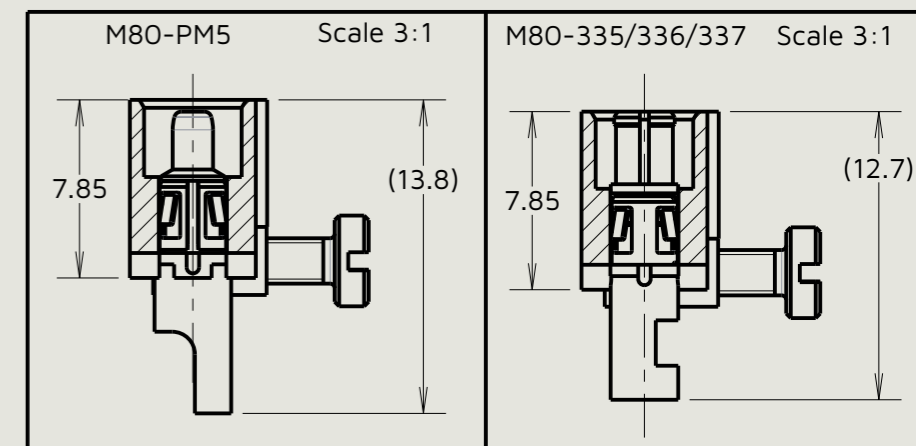
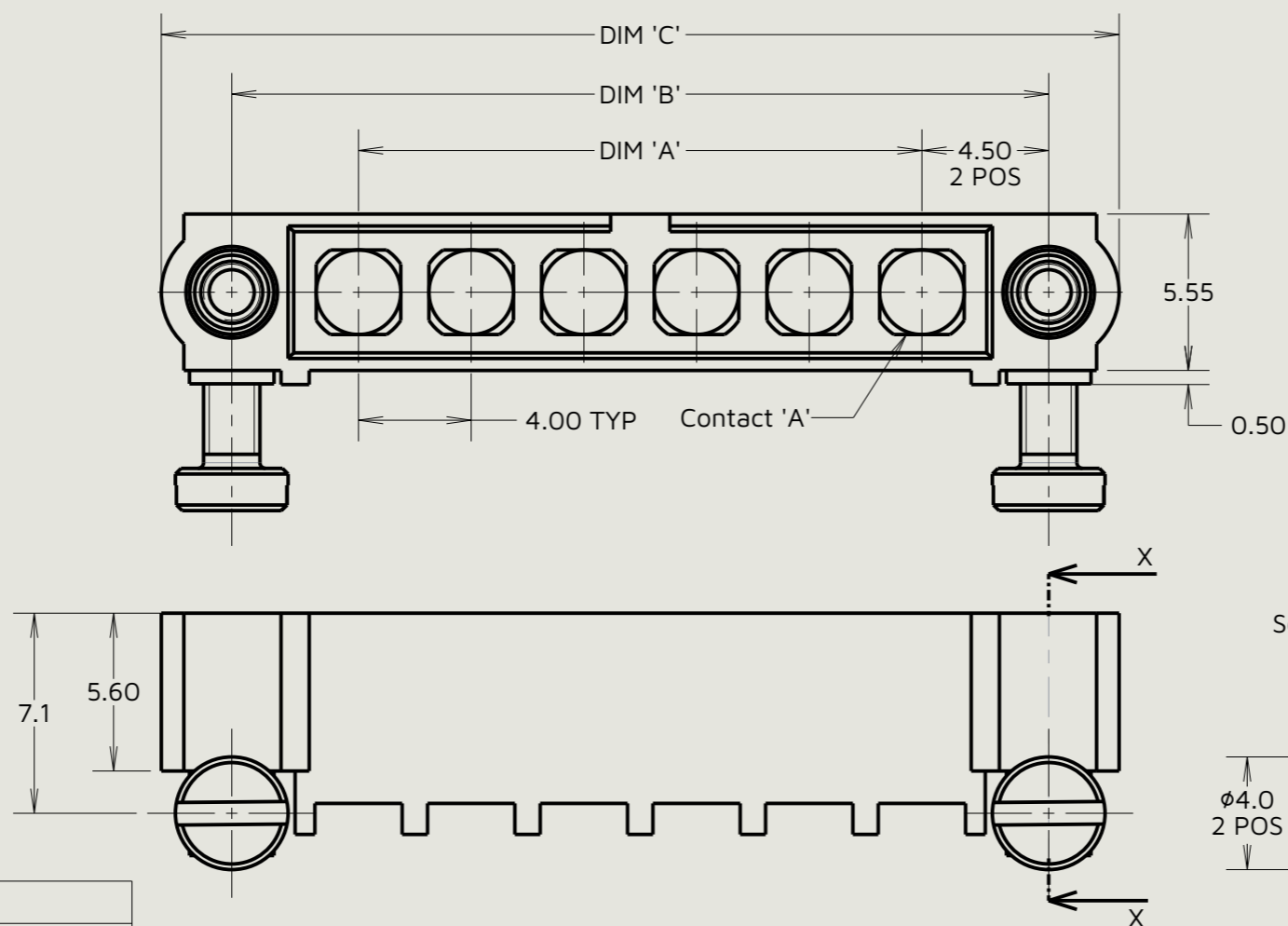
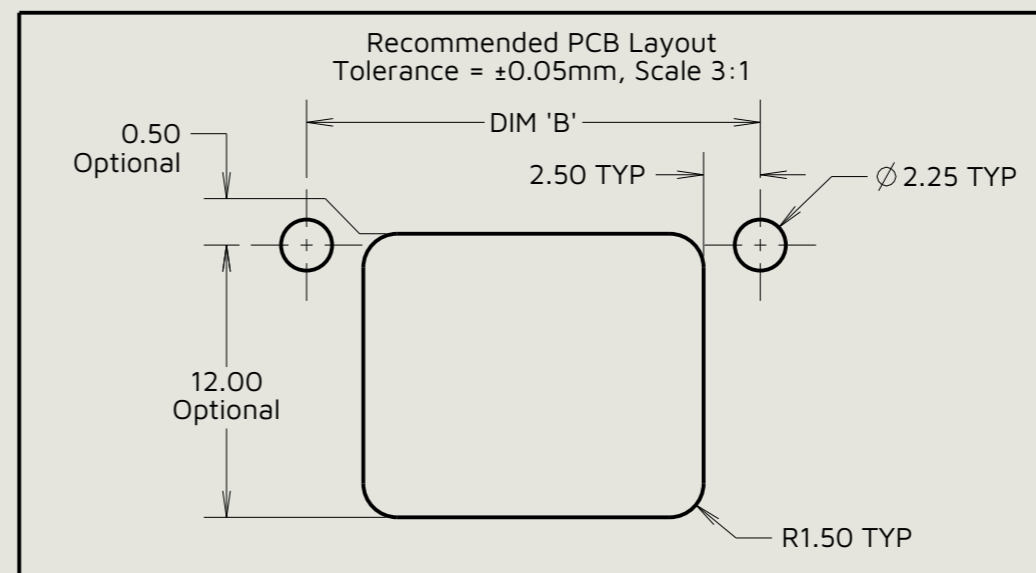


Table 1: Dimension Variants

Dimension	Calculation
DIM 'A'	4 x No. Of Contacts - 4.00
DIM 'B'	4 x No. Of Contacts + 5.00
DIM 'C'	4 x No. Of Contacts + 10.0



Order Code:
M80-5000000M5-XX-XXX-00-000

Total No. Of Contacts: _____
 02 To 12

Special Contacts:
 335 = Power Contact 12AWG Solder M80-335
 336 = Power Contact 14AWG Solder M80-336
 337 = Power Contact 16AWG Solder M80-337
 338 = Power Contact 18AWG Solder/Crimp M80-338
 339 = Power Contact 20AWG Solder/Crimp M80-339
 PM5 = Power Contact 10AWG Solder M80-PM5

MJ	13	28.01.26	37709
Initials	Rev.	Date	CO
MGP	4	16.07.13	12116

- Notes:
- Connectors are supplied with contacts and Board Mount Screws not assembled.
 - For extra power contacts use part numbers: M80-335/336/337/338/339/PM5.
 - Contact extraction tool = Z80-290
 - Recommended hand crimp tool for contacts: M80-338/339 = Z80-294 and positioner Z80-295.
 - Instruction sheets are available.

HARWIN
 www.harwin.com

This drawing and any information or descriptive matter set out hereon are confidential and copyright property of the Harwin group and must not be disclosed, loaned, copied or used for manufacturing, tendering or for any other purpose without their written permission.

TOLERANCES
 X. = ±0.50mm
 X.X = ±0.30mm
 X.XX = ±0.10mm
 X.XXX = ±0.01mm
 Angles = ±5°
 Unless stated

Third angle projection

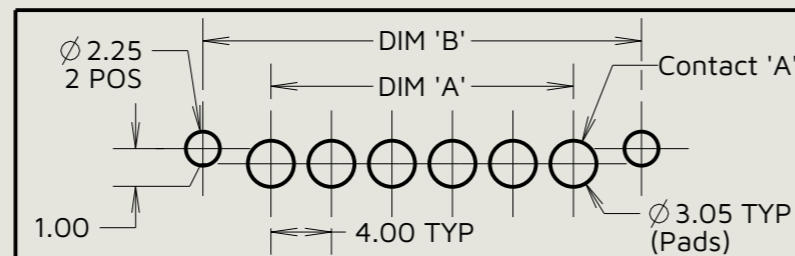
 Sheet scale: 4:1
 Do not scale
 Sheet size: A3

MATERIAL:
 See Specification
 FINISH:
 See Specification

Title:
 Datamate Mix-Tek Male Right-Angle Boardmount Jackscrew Connector
 Drawing number:
M80-5000000M5-XX-XXX-00-000

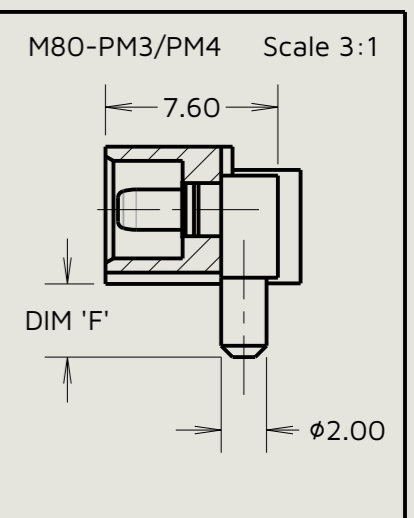
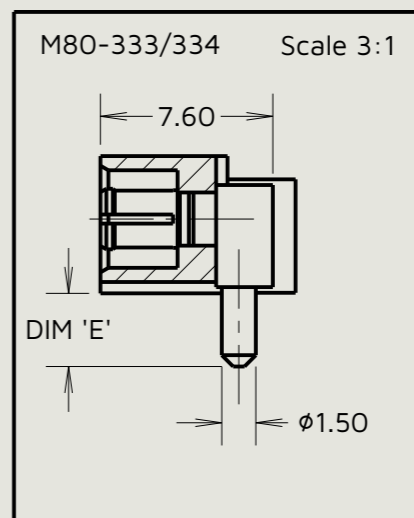
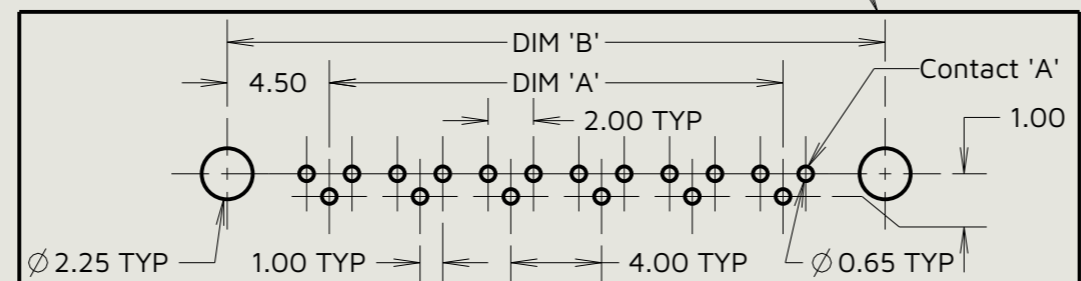
Customer Information Sheet

Specifications:
 Material:
 Housing: Glass Filled PPS, UL94V-0, Black
 Power Contact: Copper Alloy
 Coax Contact:
 Body, Inner Contact = Copper Alloy
 Insulator = PTFE
 Jackscrew, Screw = Stainless Steel
 Finish:
 Power Contact: Gold
 Coax Contact: Body, Inner Contact = Gold
 Packing:
 Tube
 For Complete Specification See Component Specification C005XX (Latest Issue)



Recommended PCB Layout For SMT Power Contacts: M80-33A
 Tolerance = ±0.05mm, Scale 2:1

Recommended PCB Layout For Coax Contacts: M80-313/314
 Tolerance = ±0.05mm, Scale 3:1

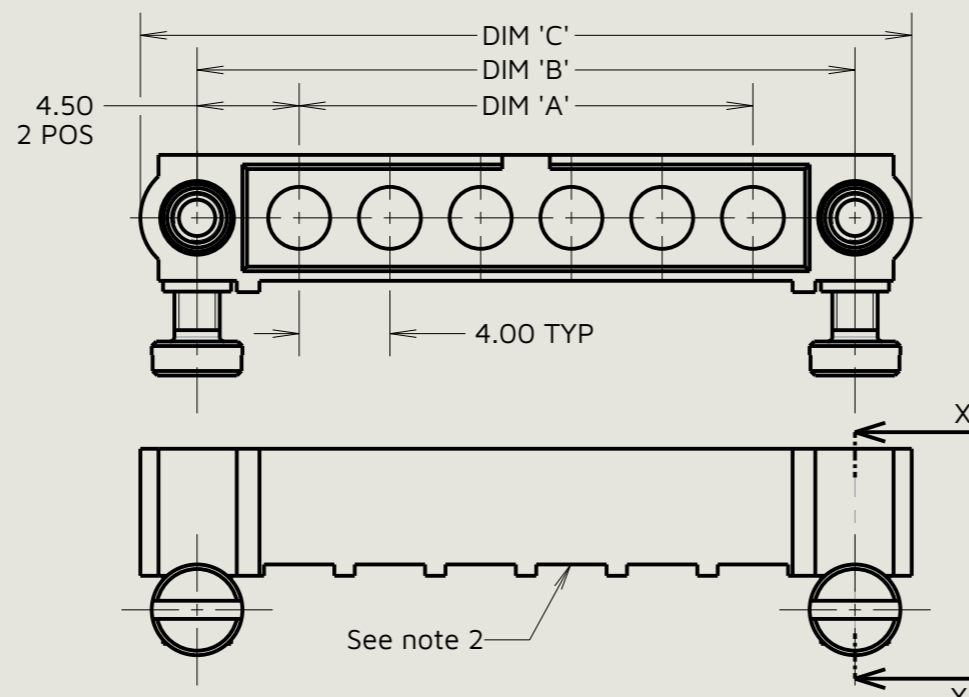


Order Code:
M80-5000000M5-XX-XXX-00-000

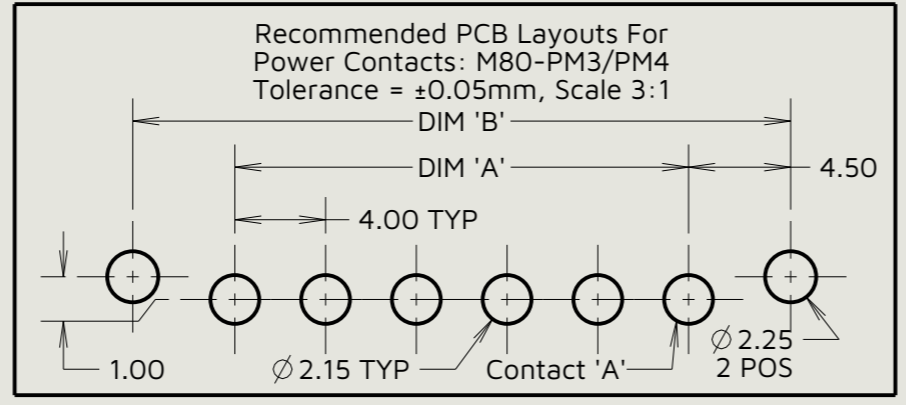
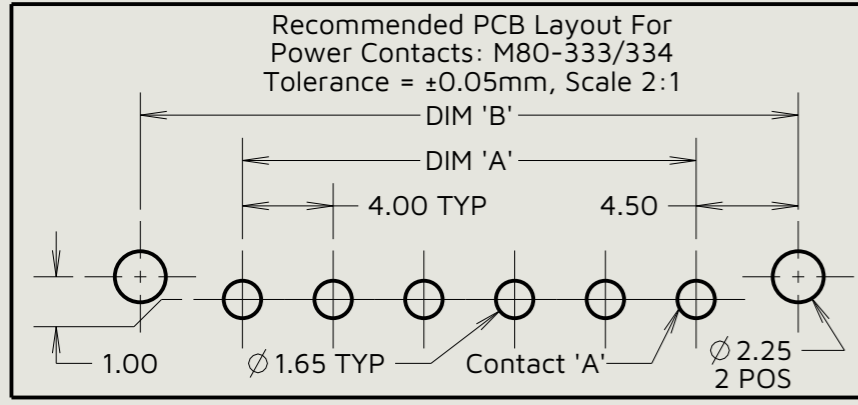
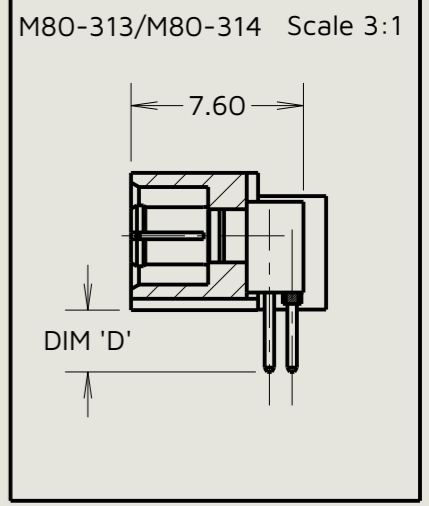
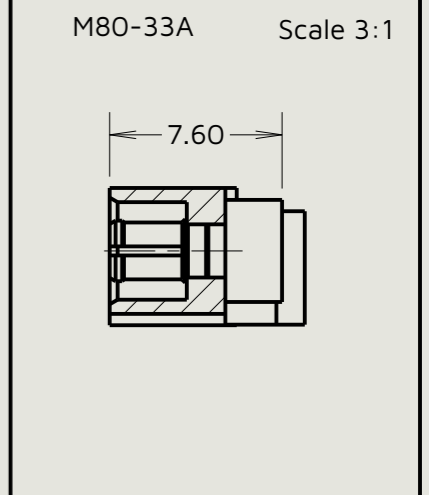
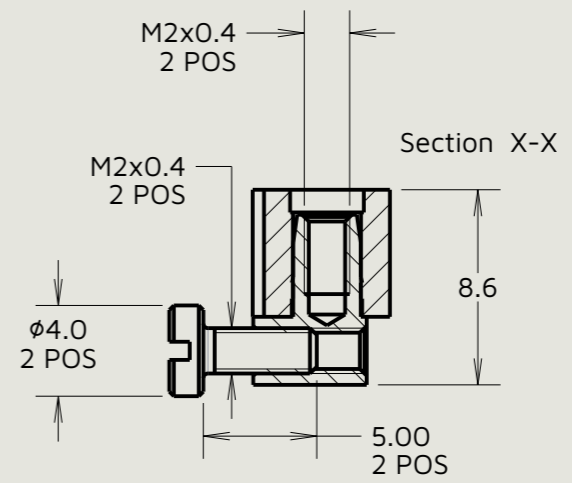
Total No. Of Contacts: _____
 02 To 12

Special Contacts:
 313 = Coax Contact 3.0mm PC Tail M80-313
 314 = Coax Contact 4.5mm PC Tail M80-314
 333 = 20A Power Contact 3.5mm PC Tail M80-333
 334 = 20A Power Contact 5.0mm PC Tail M80-334
 PM3 = 40A Power Contact 3.5mm PC Tail M80-PM3
 PM4 = 40A Power Contact 5.0mm PC Tail M80-PM4
 33A = 20A Power Contact Right-Angle SMT M80-33A

Dimension	Calculation
DIM 'A'	4 x No. Of Contacts - 4.00
DIM 'B'	4 x No. Of Contacts + 5.00
DIM 'C'	4 x No. Of Contacts + 10.0
DIM 'D'	M80-313 = 2.7mm, M80-314 = 4.2mm
DIM 'E'	M80-333 = 3.2mm, M80-334 = 4.7mm
DIM 'F'	M80-PM3 = 3.2mm, M80-PM4 = 4.7mm

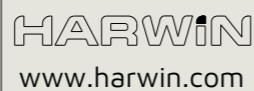


Coax And Power PC Tail Contacts Only



MJ	13	28.01.26	37709
Initials	Rev.	Date	CO
MGP	4	16.07.13	12116

Notes:
 1. Connectors are supplied with contacts assembled. Supplied Board Mount Screws are not assembled.
 2. Special contacts hidden for illustration purposes, see order code for assembled part numbers.



This drawing and any information or descriptive matter set out hereon are confidential and copyright property of the Harwin group and must not be disclosed, loaned, copied or used for manufacturing, tendering or for any other purpose without their written permission.

TOLERANCES
 X. = ±0.50mm
 X.X = ±0.30mm
 X.XX = ±0.10mm
 X.XXX = ±0.01mm
 Angles = ±5°
 Unless stated

Third angle projection

 Sheet scale: 3:1
 Do not scale
 Sheet size: A3

MATERIAL:
 See Specification
 FINISH:
 See Specification

Title:
Datamate Mix-Tek Male Right-Angle Boardmount Jackscrew Connector
 Drawing number:
M80-5000000M5-XX-XXX-00-000