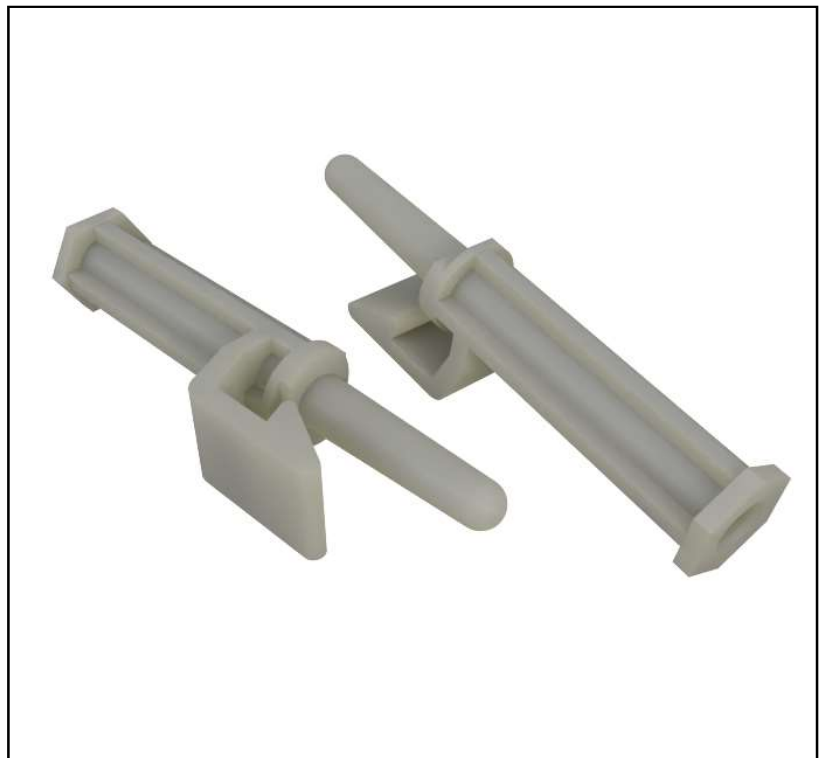


Features

- Snap-In Edge Holding
- Mounted with N°6 self-tapping screw
- Grips PCB with locking clip
- Extra long nose guides PCB into position

RS PRO PCB Supports

RS Stock No.: See table



RS PRO is the own brand of RS. The RS PRO Seal of Approval is your assurance of professional quality, a guarantee that every part is rigorously tested, inspected, and audited against demanding standards. Making RS PRO the Smart Choice for our customers.

Product Description

- Screw mount, edge locking PCB support posts are easily mounted in chassis with a N°6 type B self-tapping screw
- Locking clip locks PCB firmly in place but can be easily released
- Extra-long nose aids positioning of the PCB to aid board installation

Material Specifications

Material Type	Nylon 66
Type	Snap-In Supports
Colour	Natural
Flammability Rating	UL94-V2
Working Temperature Range	-40°C to +85°C

Part Specifications

Parameters	0304288	0304290	0304291	0304293	0304294
Spacing Height (A)	6.4mm	9.5mm	12.7mm	15.9mm	25.4mm
PCB Hole Diameter	4.0mm	4.0mm	4.0mm	4.0mm	4.0mm
PCB Thickness	1.57mm	1.57mm	1.57mm	1.57mm	1.57mm
Hole Distance to Edge	6.4mm	6.4mm	6.4mm	6.4mm	6.4mm
Self-Tapping Screw Size	N°6 Type B	N°6 Type B	N°6 Type B	N°6 Type B	N°6 Type B
Screw Hole Diameter	3.2mm	3.2mm	3.2mm	3.2mm	3.2mm
Screw Hole Depth (B)	5.2mm	6.4mm	6.4mm	6.4mm	6.4mm

