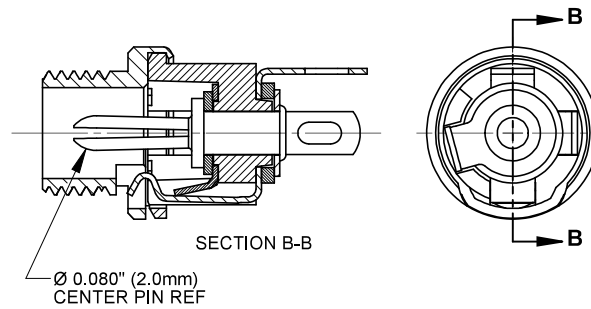
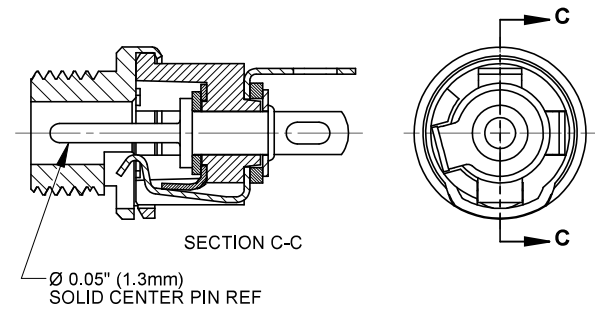


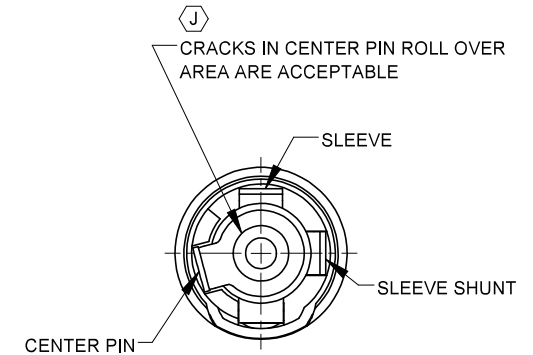
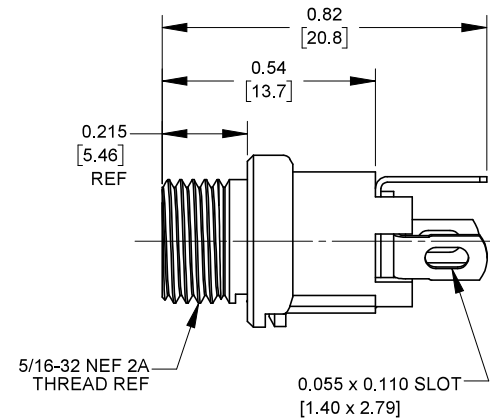
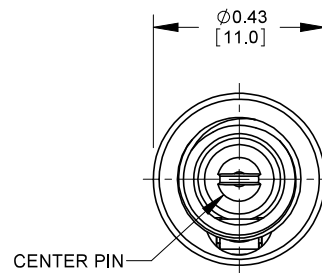
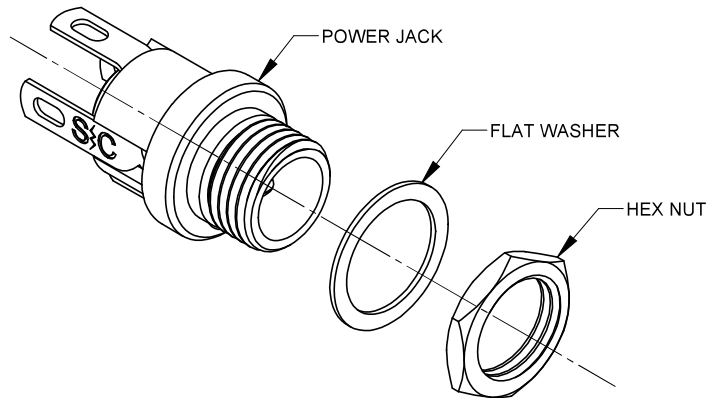
712A



722A



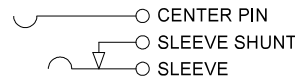
732A



NOTES:

- DIMENSIONS SHOWN FOR REFERENCE ONLY.
- HEX NUT AND FLAT WASHER SUPPLIED UNASSEMBLED.
- MATERIAL:
HOUSING, HEX NUT - COPPER ALLOY, NICKEL PLATED
INSULATOR HOUSING - THERMOPLASTIC, BLACK
TERMINAL INSULATORS - PHENOLIC
FLAT WASHER - STEEL, NICKEL PLATED
PIN, SPRING, TERMINALS - COPPER ALLOY, SILVER PLATED
- IT IS RECOMMENDED THAT THE JACK MOUNTING NUT BE TIGHTENED SNUG BY HAND BEFORE APPLYING A FINAL TIGHTENING TORQUE OF 8-10 LB-IN USING HAND TOOLS ONLY. POWER DRIVER OR IMPACT DRIVERS ARE NOT RECOMMENDED.
- THESE PRODUCTS ARE RoHS COMPLIANT

SCHEMATIC



CUSTOMER DRAWING

					<div>UNLESS OTHERWISE SPECIFIED</div> <div>1. ALL DIMENSIONS IN INCHES [mm]</div> <div>- TWO PLACE DECIMALS ±0.02 [0.5]</div> <div>- THREE PLACE DECIMALS ±0.005 [0.13]</div>	THIS DRAWING DESCRIBES A DESIGN CONSIDERED PROPRIETARY IN NATURE, DEVELOPED AND MANUFACTURED BY SWITCHCRAFT INC. AND IS RELEASED ON A CONFIDENTIAL BASIS FOR IDENTIFICATION PURPOSES ONLY.						
						SIZE	WIDTH		MULT	LBS/M	TEMPER	
						FINISH					MATERIAL	
						SPEC No.					SPEC No.	
						FIRST USED ON			SCALE		<div>Switchcraft®</div>	
									3:1			
J	28397	06-11-21	PC	TJK		DATE DRAWN	BY	CHKD	APVD			
H	27884	05-04-17	PC	TJK		09-27-17	PC	PC	TJK			
								09-27-17	09-27-17	SHEET 1 OF 1		
REV	ECO NUMBER	DATE	BY	APVD		NAME					PART No.	REV
REVISIONS					DO NOT SCALE DRAWING					POWER JACKS 7_2A SERIES, RoHS		712A 722A 732A J

DO NOT SCALE DRAWING

SolidWorks CAD File **B**